



# Dell Optiplex SX280 Hard Drive Replacement

Hard Drive

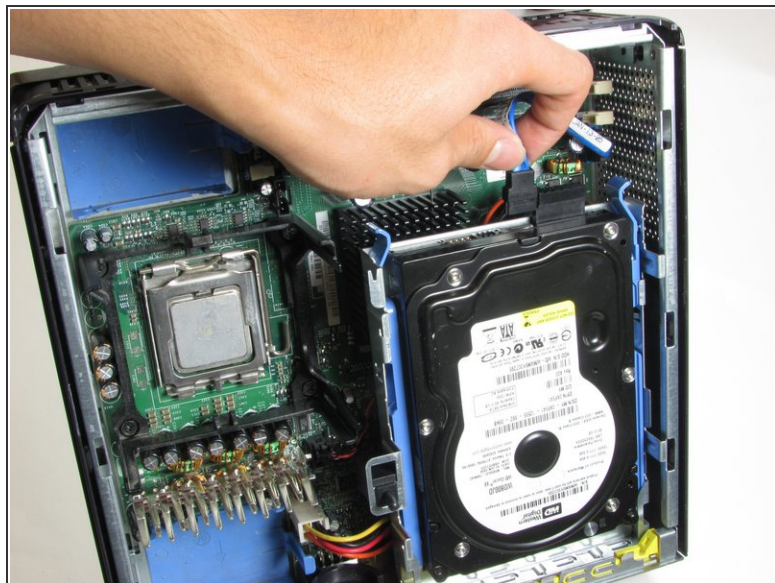
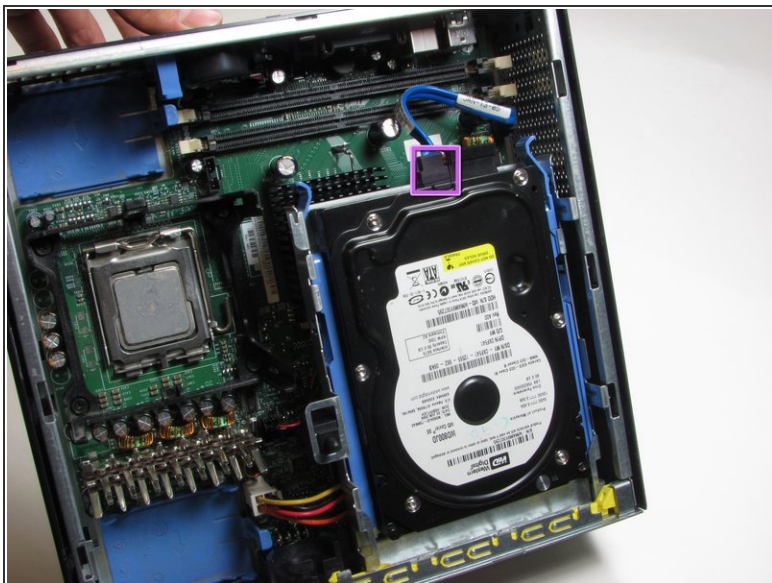
Written By: Tom



# INTRODUCTION

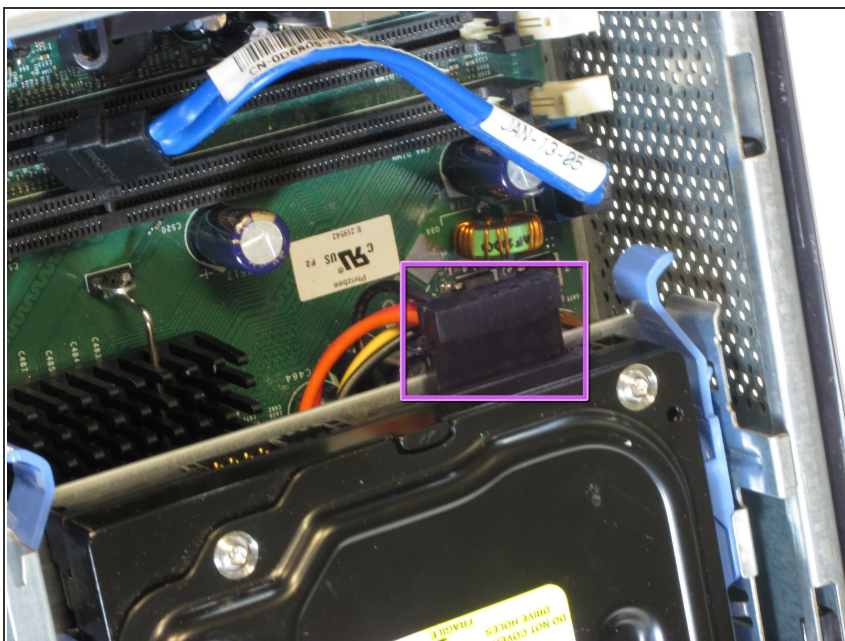
Prerequisite Only

## Step 1 — Hard Drive



- Unplug the blue cable that connects the hard drive to the motherboard.

## Step 2



- Unplug the power supply, distinguished by its red and yellow wires.



## Step 3



- Squeeze the release tabs on either side of the hard drive.
- Then slide the hard drive out of the computer while squeezing the tabs.

To reassemble your device, follow these instructions in reverse order.