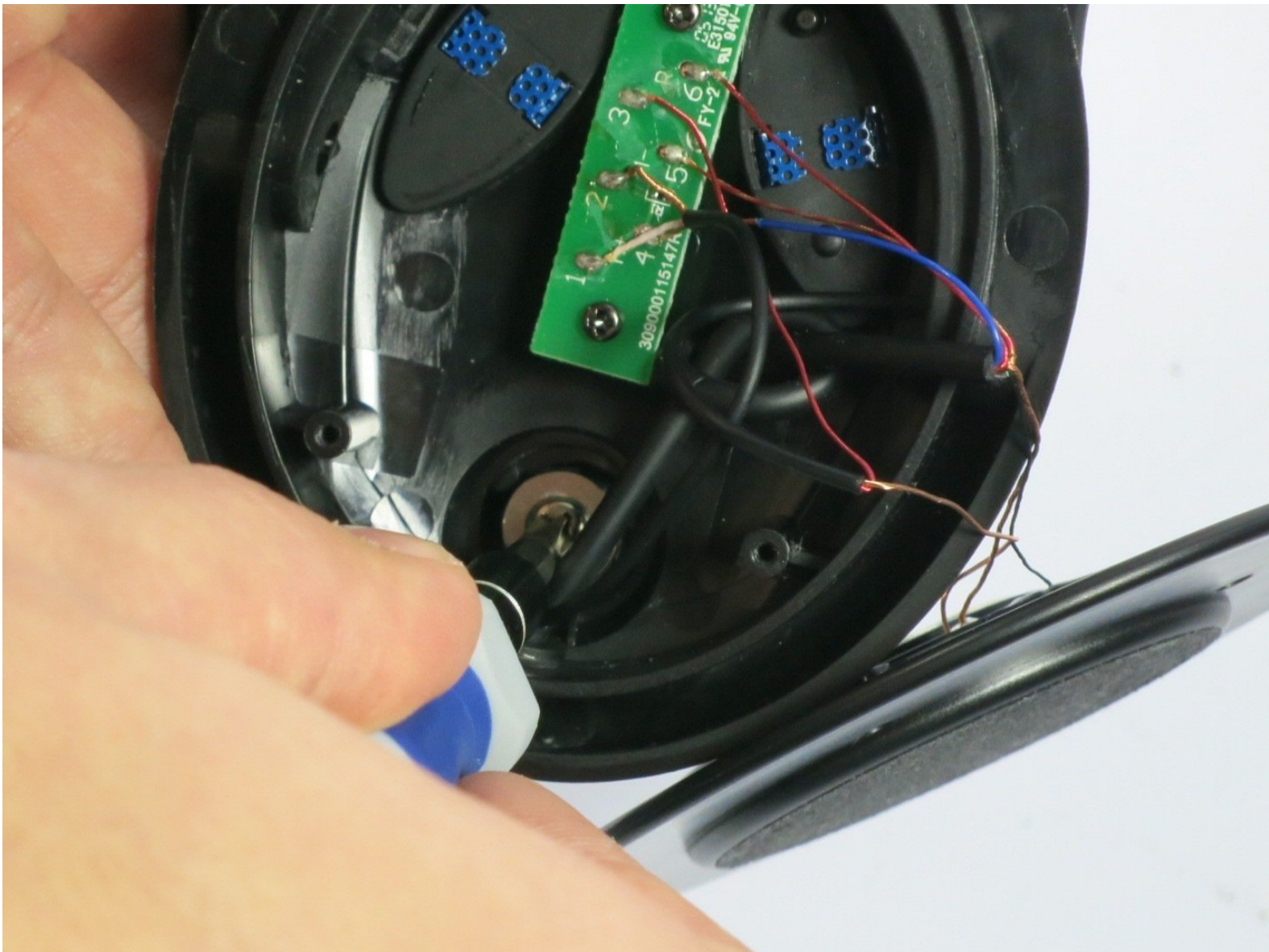




# Turtle Beach PX22 Microphone Replacement

A non-responsive microphone may need to be replaced.

Written By: James de Iturrondo



## INTRODUCTION

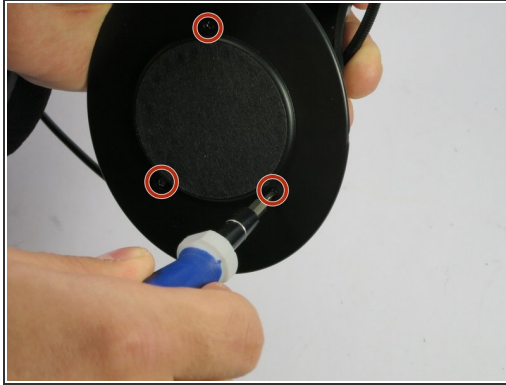
If your microphone does not work after troubleshooting with our guides it may need to be replaced. This guide will show the user how to remove a broken microphone and replace it with a new microphone.

---

### TOOLS:

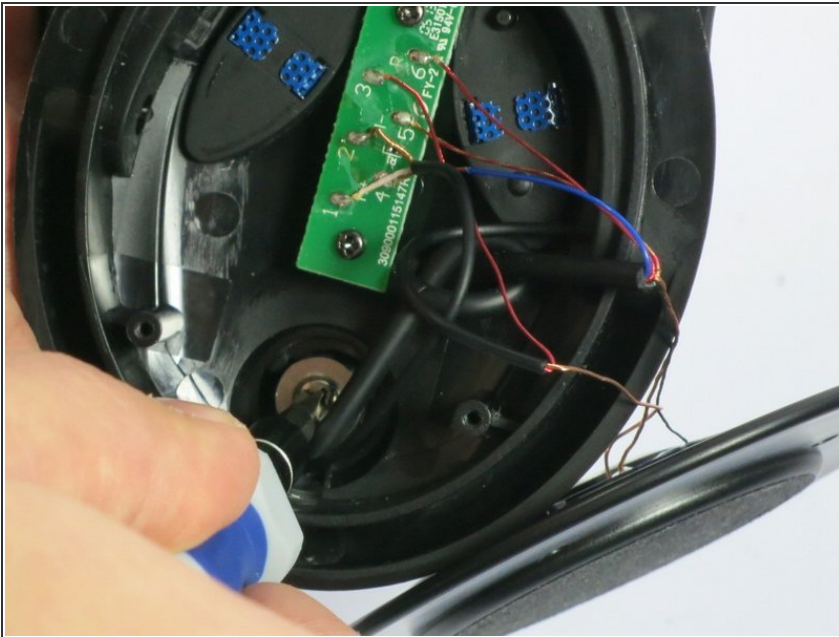
- [Solder](#) (1)
  - [Soldering Iron](#) (1)
  - [Phillips #00 Screwdriver](#) (1)
  - [Phillips #2 Screwdriver](#) (1)
-

## Step 1 — Microphone



- Use your fingers to peel off ear cushion by pinching and pulling off the leather.
- Use the Philips #00 head screwdriver to remove three screws around the speaker (9/32 in length, 1/8 inch head)
- The housing will come loose. Take note of position of the wires.

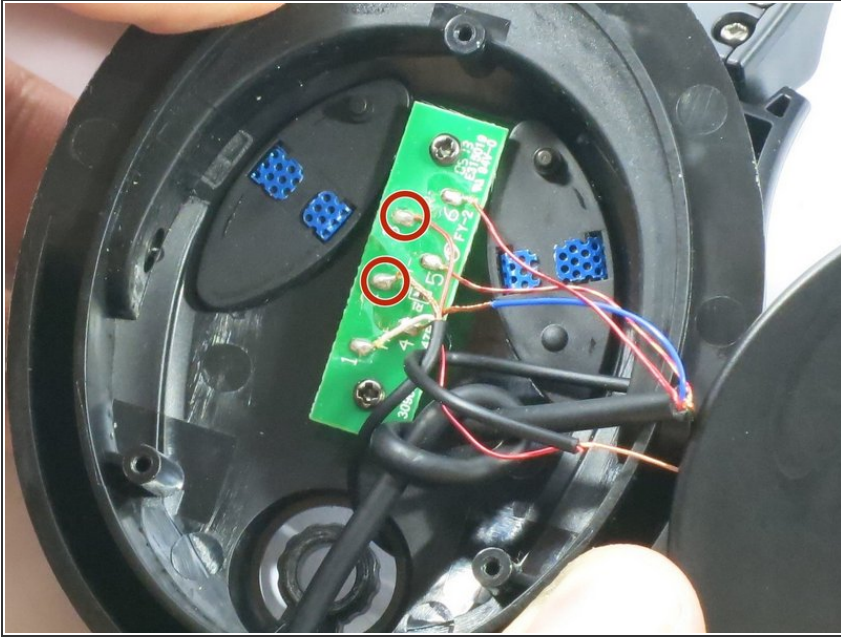
## Step 2



- Remove the 9/32 inch screw with a Philips 2 screwdriver to gain access to microphone.
- ⓘ You may need to pull the wire with the knot out of the way of the screw.

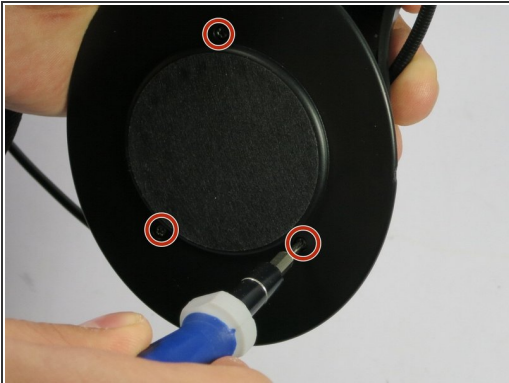


### Step 3



- Apply heat to the circled wires on the circuit board with a heat gun.
- Insert the new microphone and solder the wires into the correct positions.
- Pull the excess microphone wire back into the speaker housing.
- Use the Philips #2 screwdriver to replace the screw and fix the microphone.
- ⓘ Hold the microphone neck so that it does not rotate when screwing.

### Step 4



- Position the speaker on the headset so that the screw holes line up. It should click into place.
- Screw in the 3 screws with the 00 Philips head screwdriver.
- Place the new cushion against speaker and wrap the leather around the plastic. Do this by working around the cushion to get all of the leather around the plastic.
- Use the plastic opening tool to tuck excess leather inside the headset.

To reassemble your device, follow these instructions in reverse order.