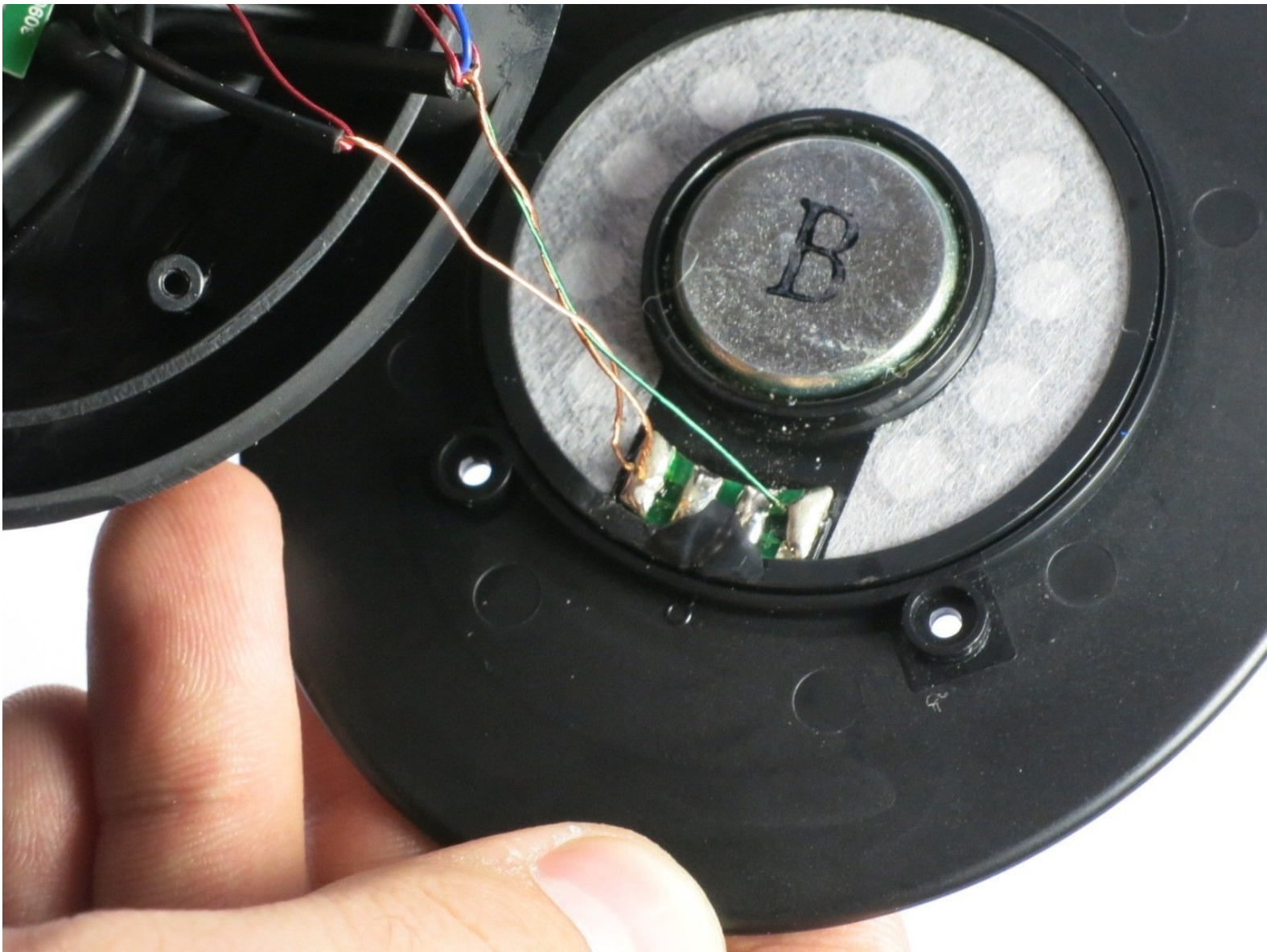




# Turtle Beach PX22 Speaker Replacement

This guide shows how to replace an ineffective...

Written By: James de Iturrondo



---

## INTRODUCTION

This guide shows how to replace an ineffective or broken speaker in a Turtle Beach PX22 headset. Soldering skills are needed for this job.

---

### TOOLS:

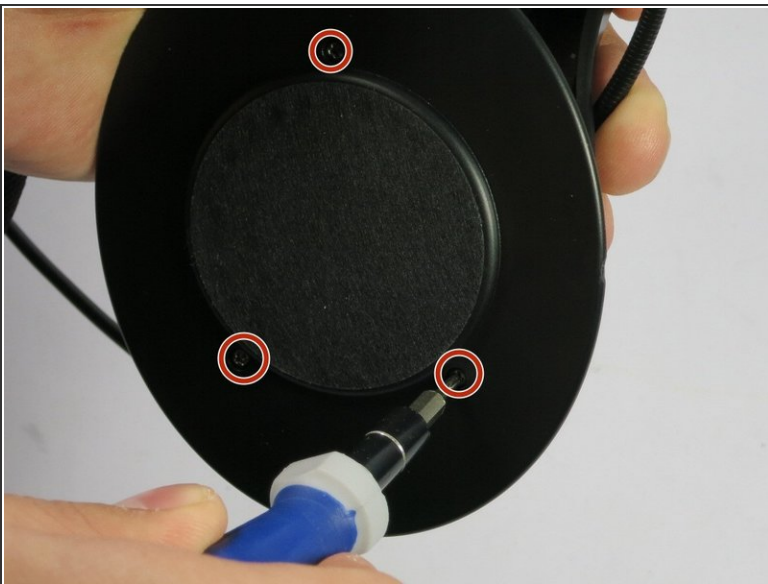
- [Phillips #00 Screwdriver](#) (1)
  - [Soldering Workstation](#) (1)
-

## Step 1 — Speaker



- Use your fingers to peel off ear cushion by pinching and pulling off the leather.

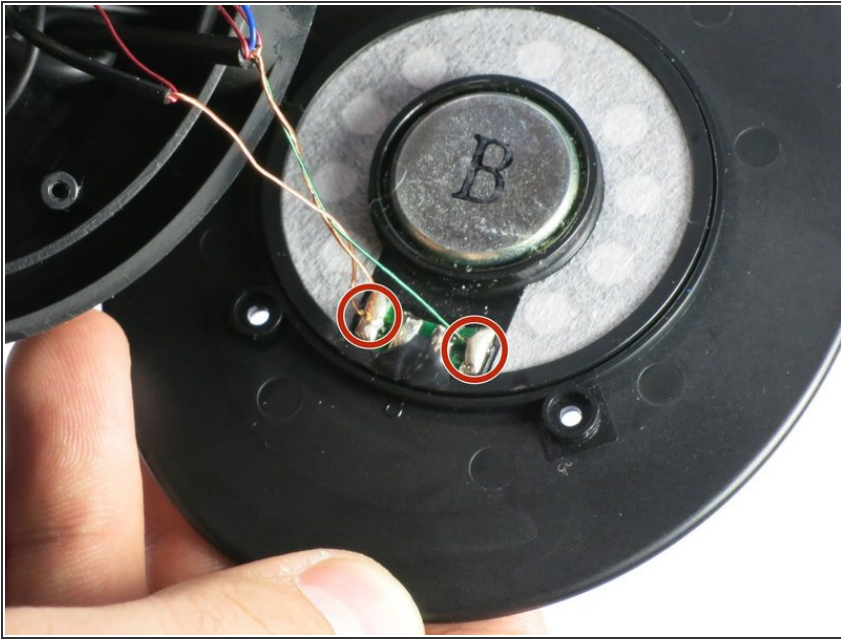
## Step 2



- Use a Phillips #00 head screwdriver to remove the three screws located around the speaker (9/32 in length, 1/8 inch head).
- The housing will come loose. Take note of the position of the wires connected to the speaker.



### Step 3



- Desolder the colored wire and copper wires.