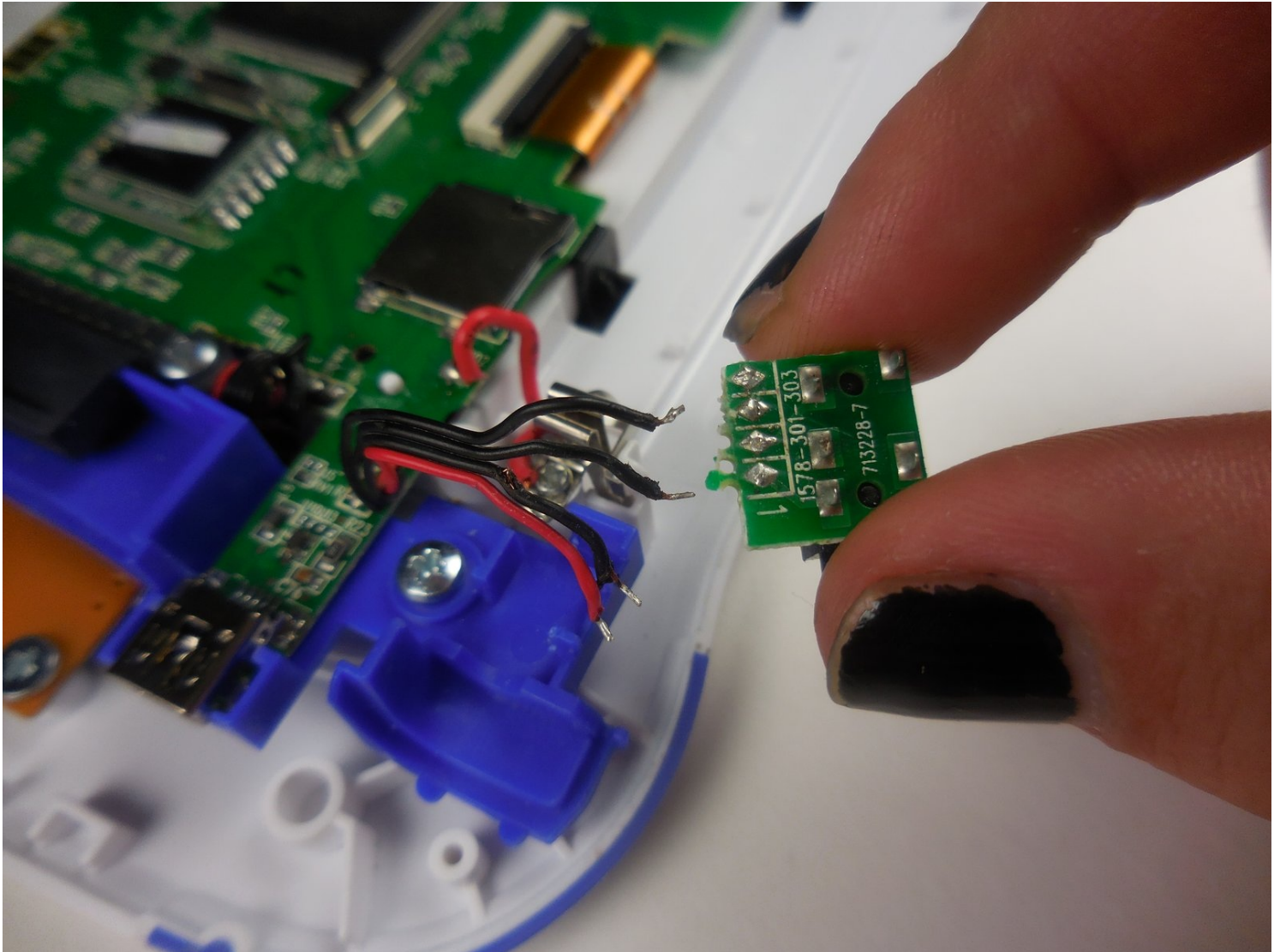




Vtech Innotab 3 Headphone Port Replacement

In order to replace the headphone port grab...

Written By: Zach Diviney



INTRODUCTION

In order to replace the headphone port grab yourself a PH00 screwdriver, a metal spudger, and a soldering kit.

- Before you begin disassembling the Vtech InnoTab 3, turn on your soldering iron. If working with others let them know that the soldering iron is on and to use caution.

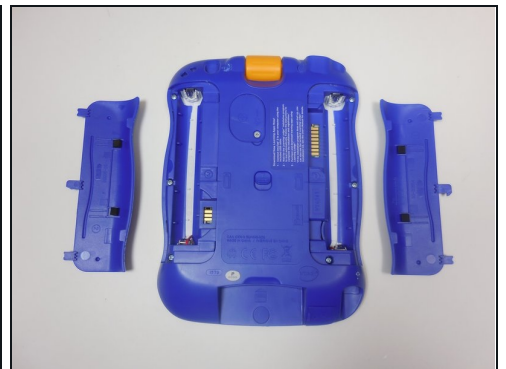
TOOLS:

Phillips #00 Screwdriver (1)

Spudger (1)

Tweezers (1)

Step 1 — Rear Panel



- Slide the battery compartment door lock down.
 - While still holding the battery compartment lock down, slide the two battery doors outwards on either side of the device.
 - Carefully remove the batteries from the battery compartment.
- ① The standard option for the InnoTab 3 is four AA batteries. Vtech also offers a rechargeable battery online, but both battery options are removed from the device the same way.

Step 2



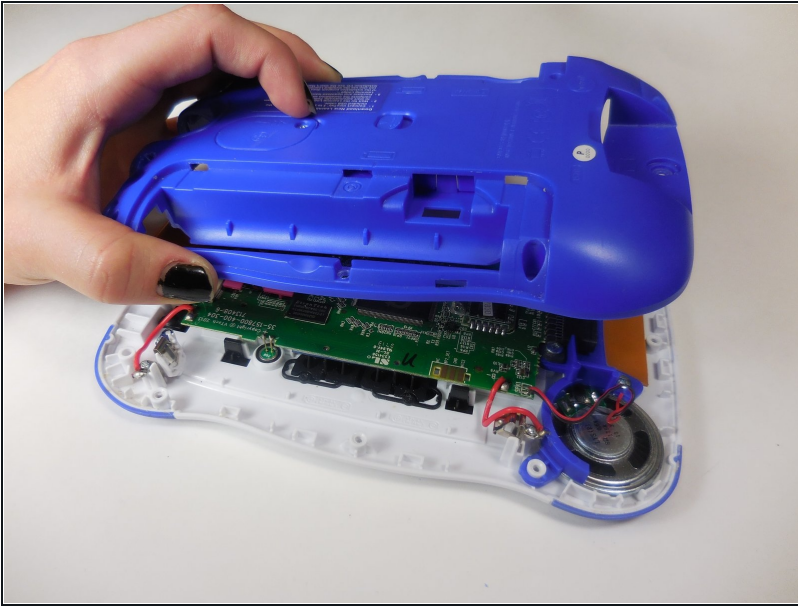
- Remove the six 7.6mm screws found in the battery compartment using a PH00 screwdriver.

Step 3



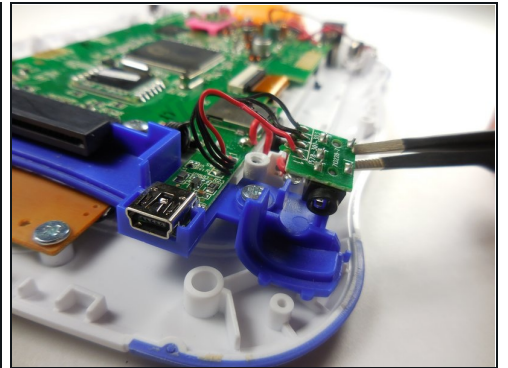
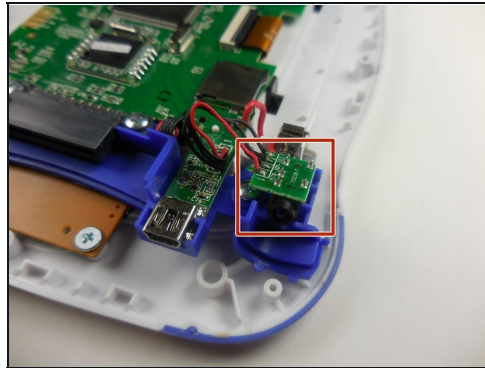
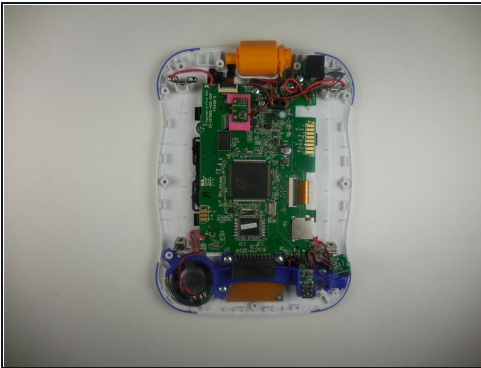
- ① There are three hidden screws on the back of the device, two at the top and one near the bottom.
- Using a nylon or metal spudger, remove the three caps that hide the screws.
- Remove the 5mm screw near the bottom and the two 7.6mm at the top using a PH00 screwdriver.

Step 4



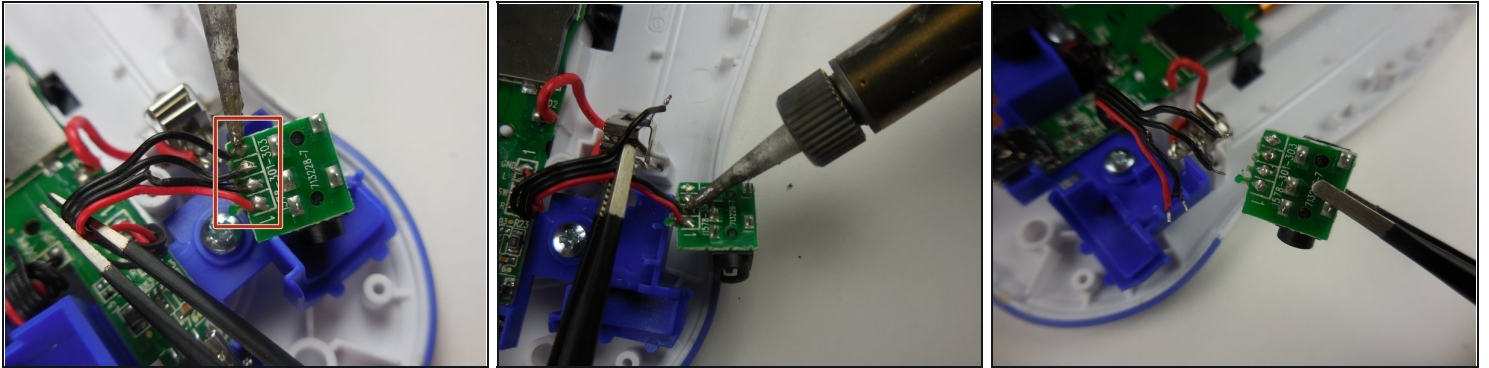
- Carefully separate the back panel from the front panel revealing the motherboard connected to the front panel.

Step 5 — Headphone Port



- On the front panel of the device, the headphone port is located at the bottom right corner of the device, opposite of the speaker.
- Using [tweezers](#), lift up to remove the headphone port from its holding.
- ⓘ Be careful not to tug too hard when removing the headphone port for you may disconnect the wires from the solder

Step 6



- Use tweezers to hold the four connecting wires away from the headphone port.
 - Desolder the four wires connected to the headphone port.
- ⓘ This is a tricky step. Refer to this guide to learn how to solder: [How To Solder and Desolder Connections](#)
-

To reassemble your device, follow these instructions in reverse order.