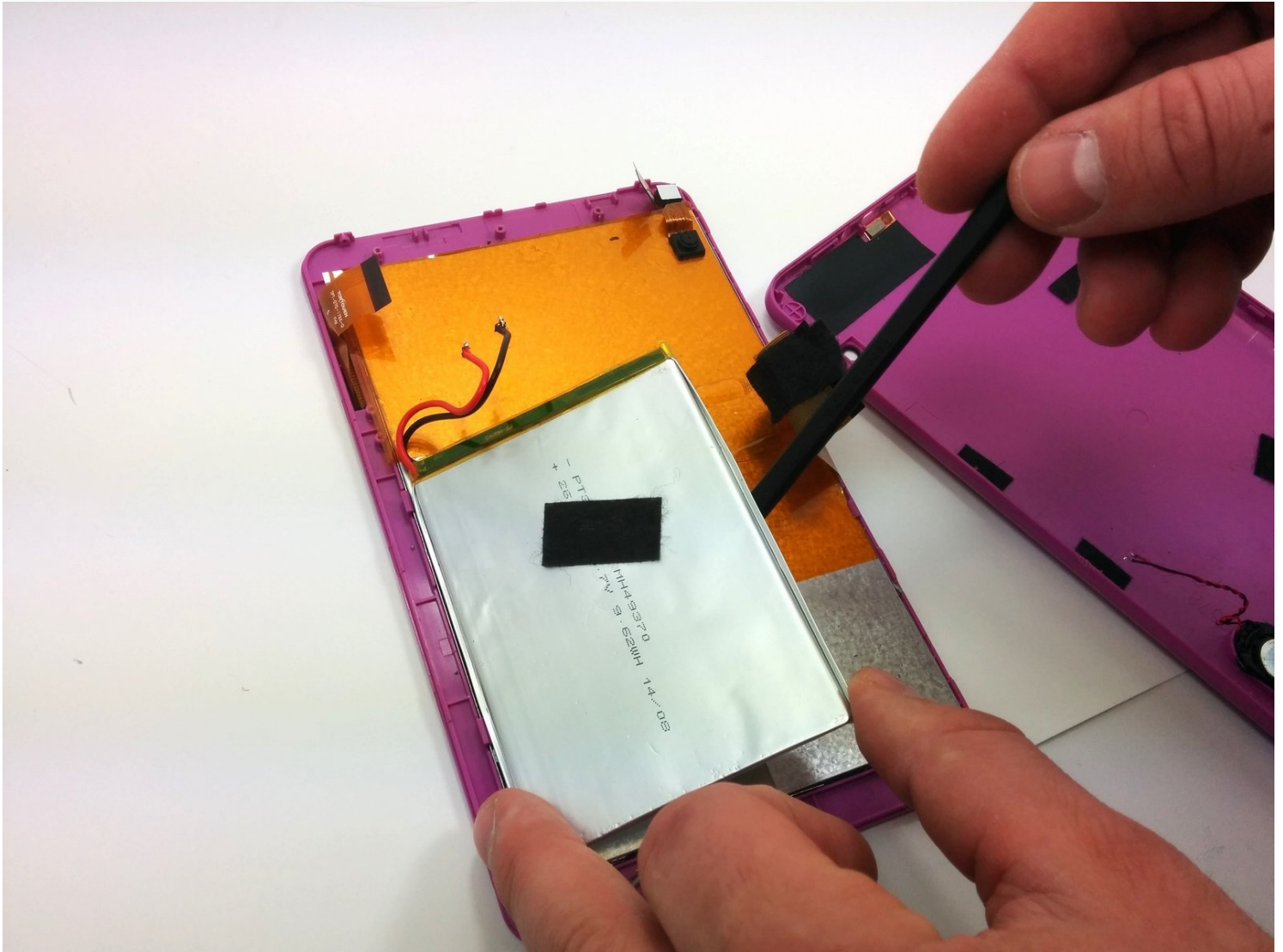




# RCA RCT6272W23 Battery Replacement

Use this guide to replace dead or...

Written By: Stephen Radachy



# INTRODUCTION

Use this guide to replace dead or malfunctioning batteries from your RCA RCT6272W23 7.0-inch Tablet.

With a new and fully charged battery, the runtime for this tablet should be up to 4 hours. If the battery life on your RCA RCT6272W23 7.0-inch Tablet begins to run low, it may be time to replace it. Replacing your own battery can save you money, increase the usability of the device, and reduce your electronic waste.

Some experience in soldering is highly recommended to ensure an easy replacement. If needed, a link to a soldering guide can be found [here](#). As with any electronic device, it is important to backup anything you have saved before beginning a repair. Also, please make sure it is turned off and removed from a power source to ensure your safety and to protect the tablet.

---

## TOOLS:

Phillips #00 Screwdriver (1)

iFixit Opening Tool (1)

Soldering Iron (1)

Spudger (1)

---

## Step 1 — Case



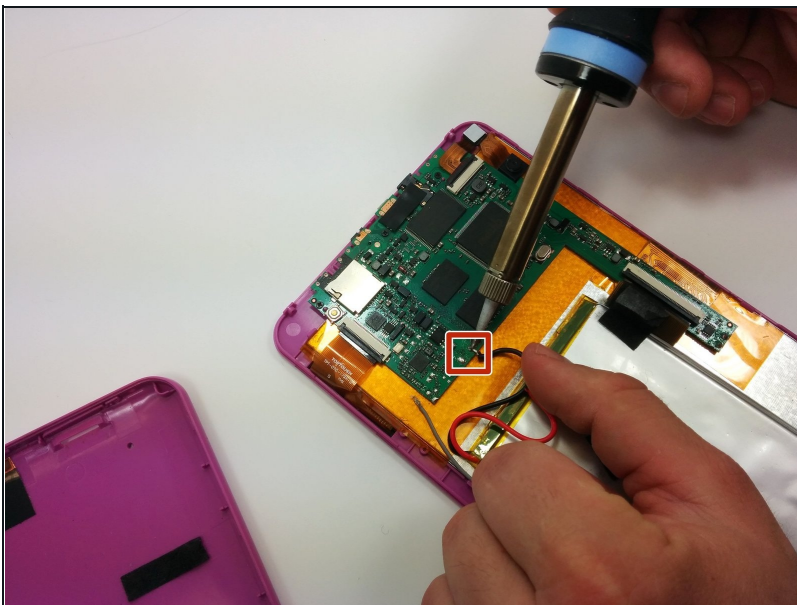
- Use a Phillips #00 screwdriver to remove both 4.1 mm screws at the top of the device which hold it together.

## Step 2



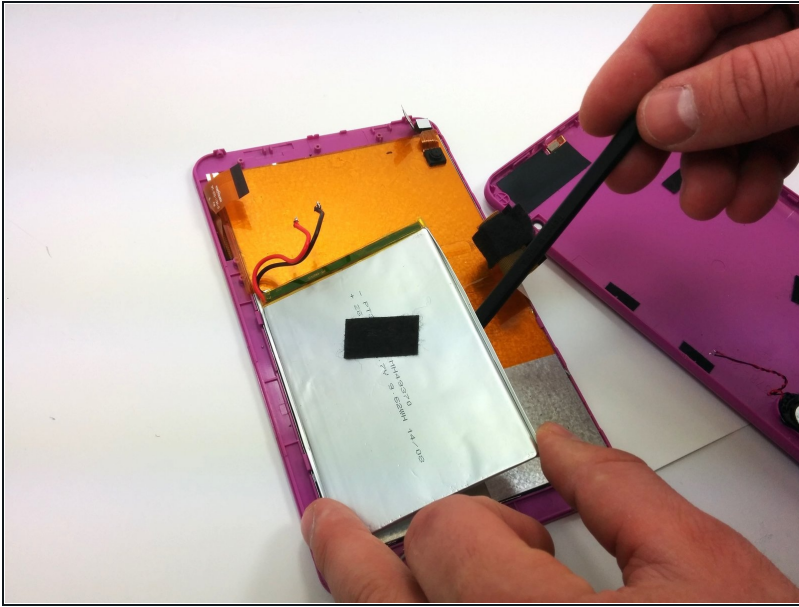
- Press the plastic opening tool into the space between the front and back portions of the case.
- Run it along the perimeter of the device to unhook the plastic tabs.
- Gently pull both sides apart.  
⚠ The speaker is connected to the back cover, so be careful when separating.

## Step 3 — Battery



- Use a soldering iron to remove the soldered connections from the battery to the motherboard.  
⚠ For your safety, and to ensure a correct repair, be sure to exercise caution when using the soldering iron.
- ① For more information about soldering, check out this [guide](#).

## Step 4



- Next, use the spudger to pry the battery off of the rest of the body.
- ① The battery is taped on with double-sided tape. Prepare another strip of double-sided tape and have it ready to reattach the battery.

---

To reassemble your device, follow these instructions in reverse order.