



Samsung DV300F Lens Replacement

This guide will serve as a replacement guide for the Lens.

Written By: Timothy Gordon



INTRODUCTION

This guide will show how to remove the camera's lens.



TOOLS:

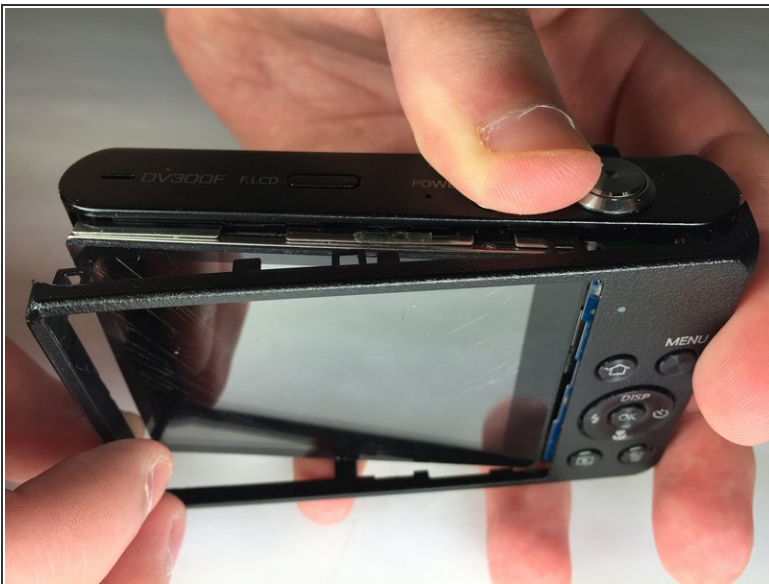
- [Phillips #0 Screwdriver](#) (1)
-

Step 1 — Front and Rear Casing



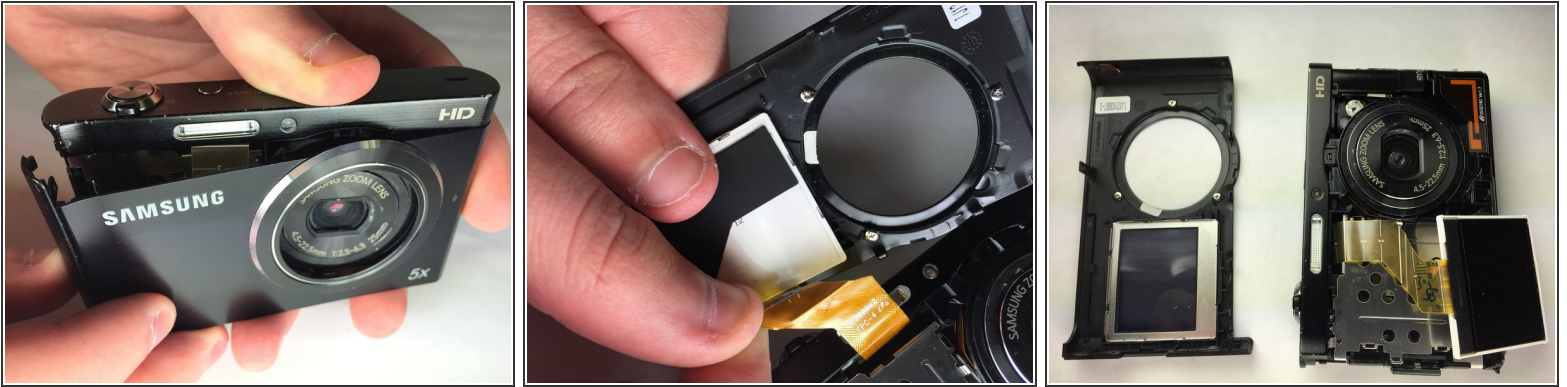
- Remove the two black 4.2 mm screws on the right side of the camera using a Phillips #0 screwdriver.
- Remove the two black 4.2 mm screws on the left side of the camera using a Phillips #0 screwdriver.
- Remove the two black 4.2 mm screws on the bottom of the camera using a Phillips #0 screwdriver.

Step 2



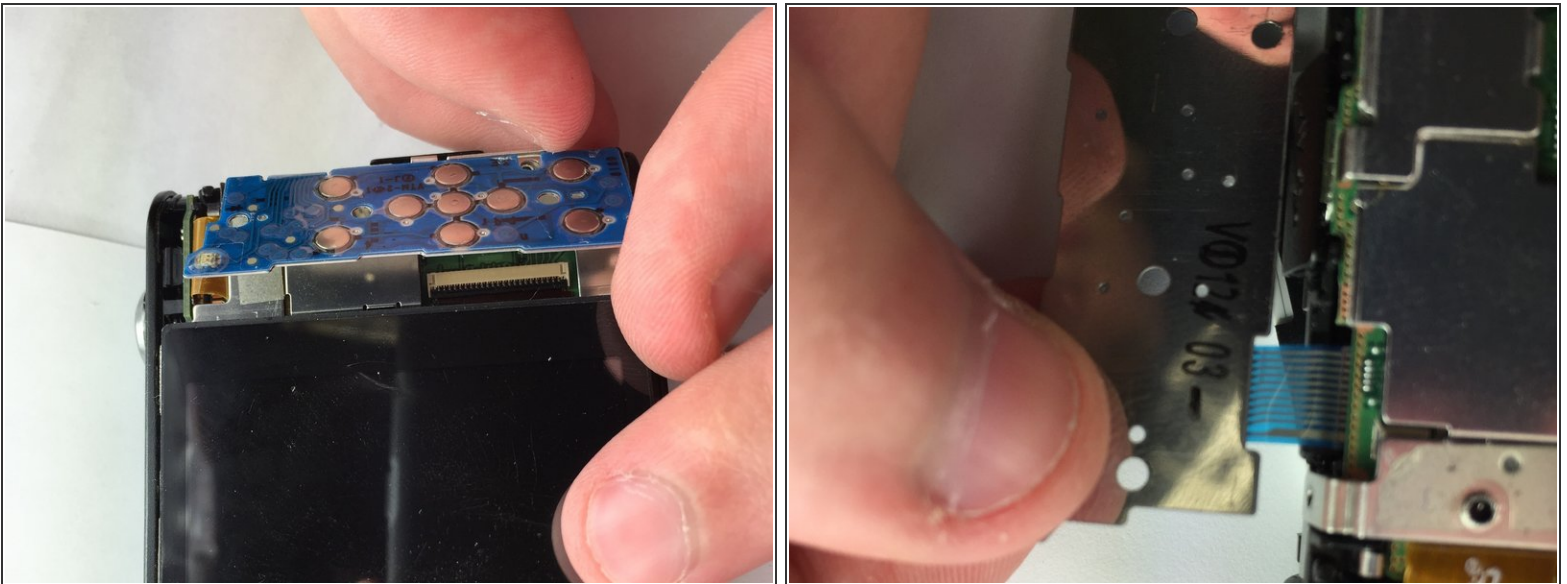
- Remove the back case of the camera carefully.

Step 3



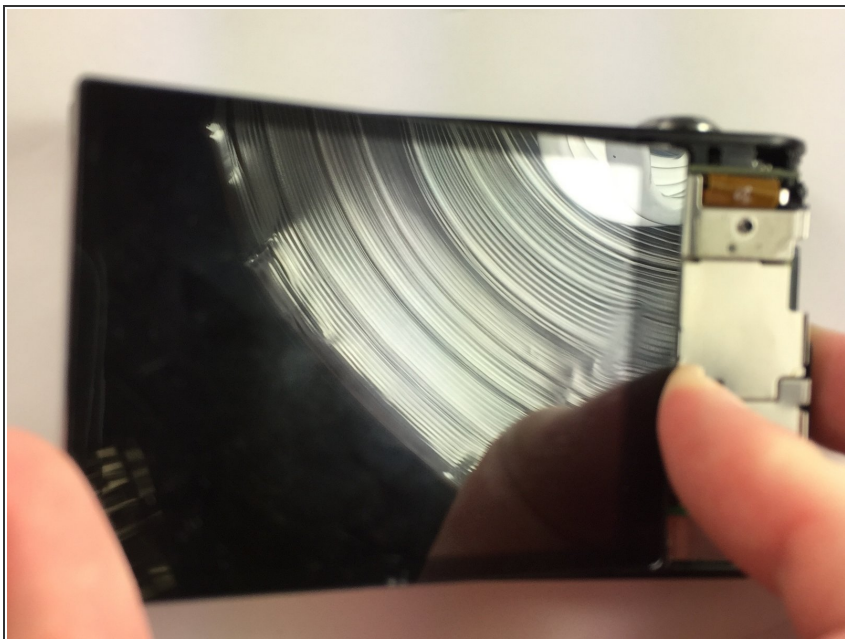
- Remove the front case of the camera.
- Remove the front LCD screen from the front case next to the lens.

Step 4 — Back Button Control



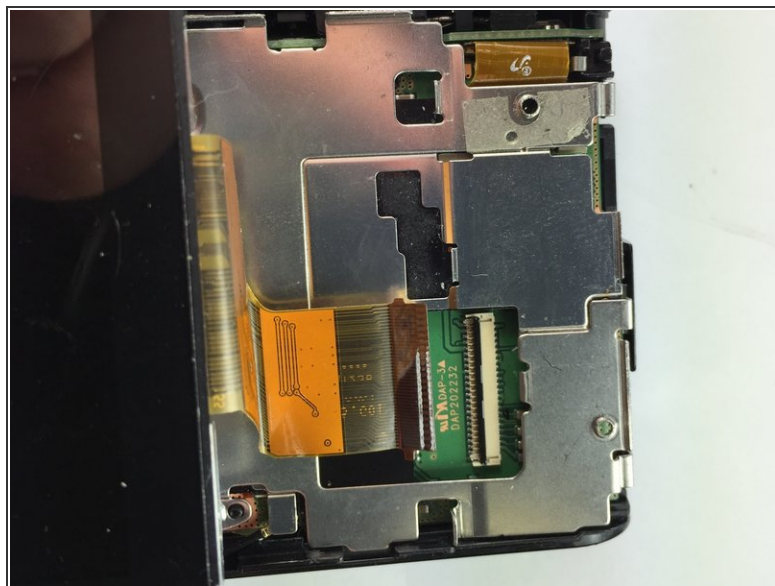
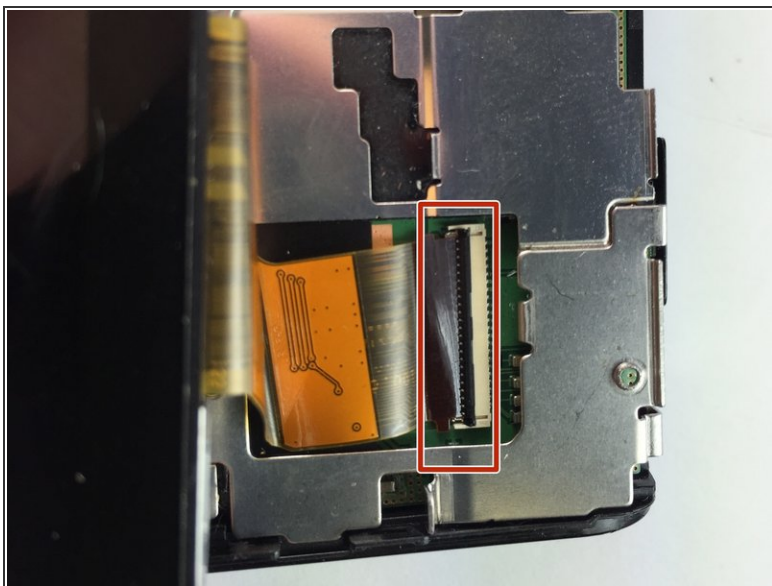
- Remove the blue button control from its position next to the LCD screen.
- Pull the ribbon cable to disconnect the blue button control from the camera.

Step 5 — Back LCD Screen



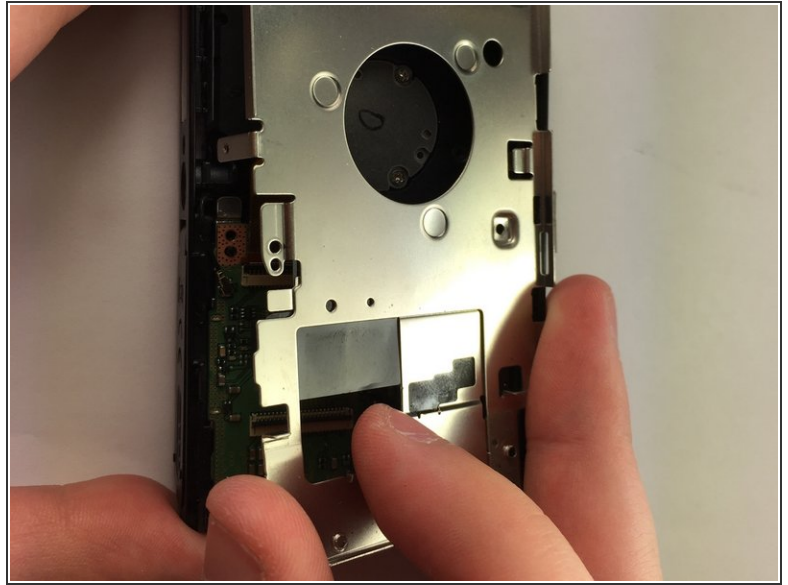
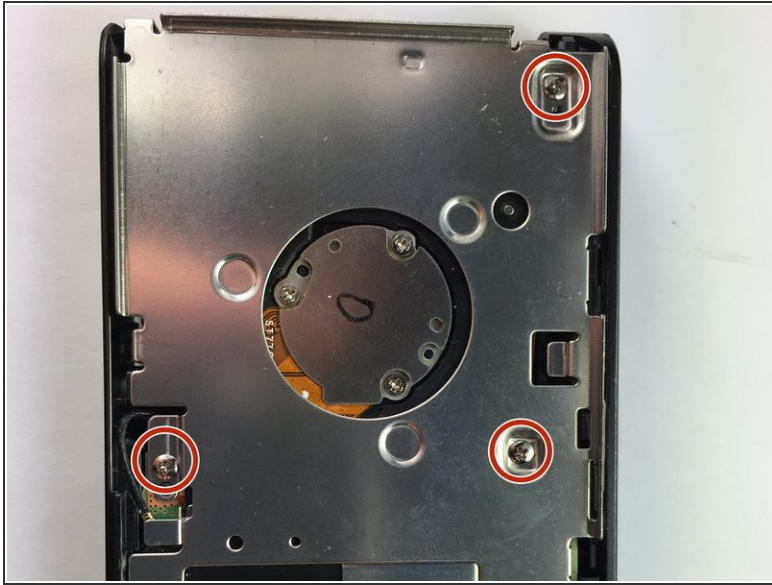
- Remove the back LCD screen from its place carefully.

Step 6



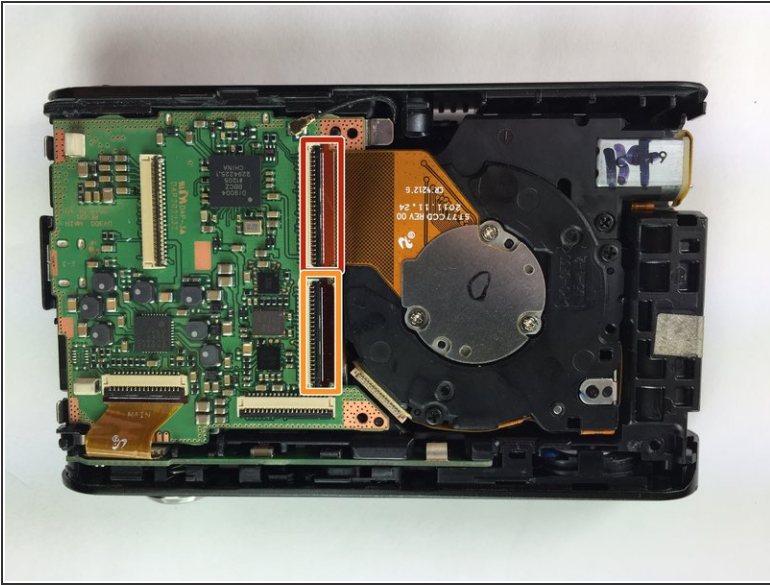
- Flip the black tab where the back LCD screen connects to the circuit board.
- Pull the tape connection to disconnect the back LCD screen from the circuit board.

Step 7 — Lens



- Unscrew the 3 silver #0 Phillips 4.45mm screws from the circuit board cover
- Remove the circuit board cover

Step 8



- Flip the first black tab connecting the lens to the circuit board
- Flip the second black tab connecting the lens to the circuit board
- Push the lens out from the front to remove it from the camera

To reassemble your device, follow these instructions in reverse order.