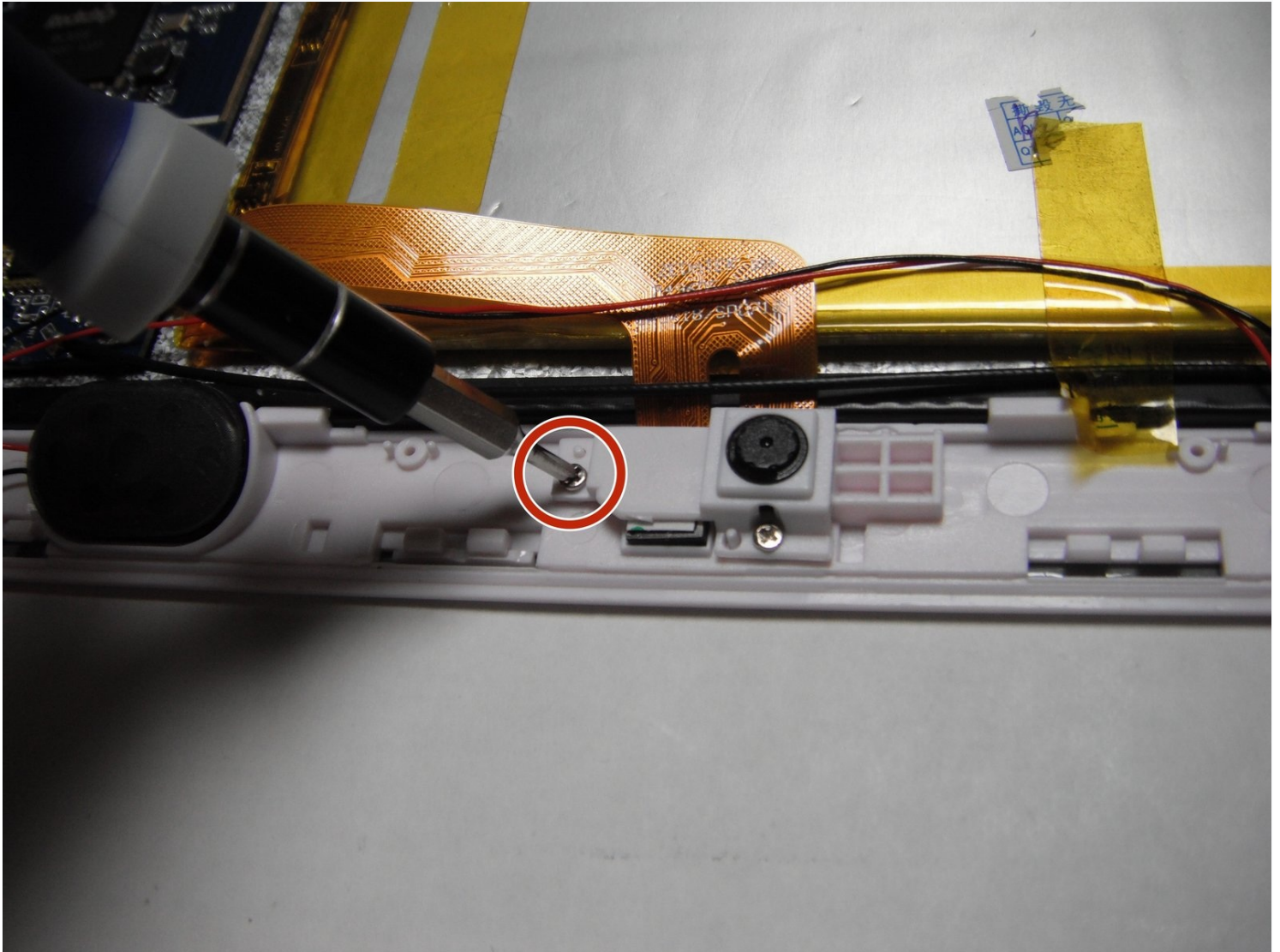




Axess TA2513-10WT Camera Replacement

Trouble Shooting This guide will help you...

Written By: Steven Kavanagh



INTRODUCTION

[Trouble Shooting](#)

This guide will help you access and replace the **Axess TA2513-10WT** camera by following this procedure. It's possible that your camera is broken or malfunctioning or the tablet isn't producing any image due to physical damage to the lens or software bugs causing compatibility issues. Whatever your motivation, following this beginner's guide shouldn't take more than 30 minutes and doesn't require any prior repair knowledge. Before attempting to fix your tablet, please make sure you turn it off.

TOOLS:

[Magnetic Phillips Screwdriver](#) (1)

[Detailing Brush](#) (1)

[Tweezers](#) (1)

[iFixit Opening Tool](#) (1)

[Spudger](#) (1)

Step 1 — Back Cover



- Lay the tablet down on a flat surface with the screen facing up, and the external camera facing upwards and closest to you.

Step 2



- Insert the plastic opening tool in the space between the screen and the back cover above the volume buttons.
- Slide the plastic opening tool gently along the sides.
- ① If a small gap is not created between the screen and the back cover, pry gently upward at each of these latching points.

Step 3



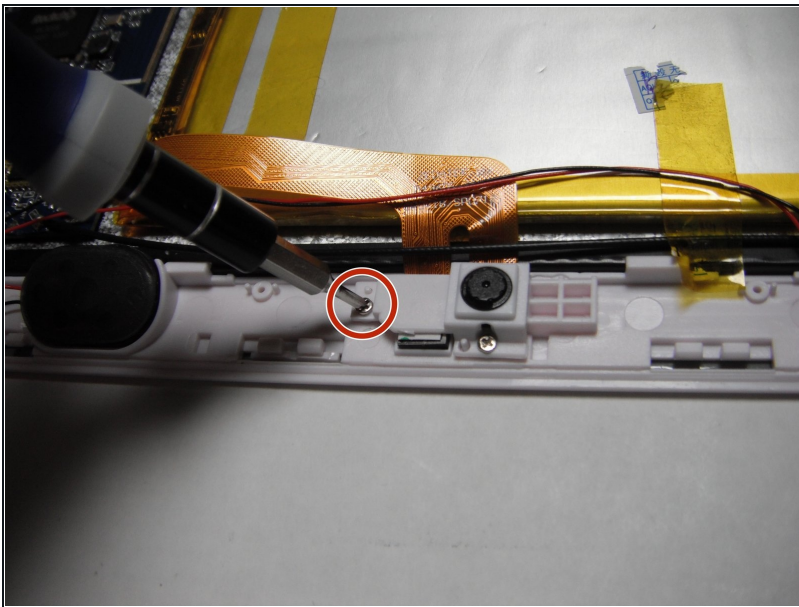
- Place the spudger in an open space to keep the back case from shutting while you continue to slide the opening tool.

Step 4



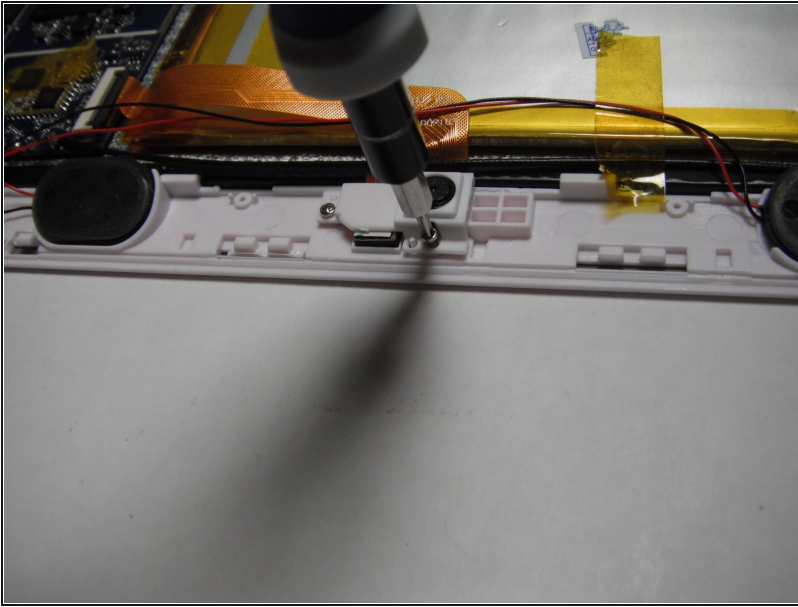
- Remove the back cover with your hands once all points have been unlatched. It should separate completely from the screen that contains the battery and chip components.

Step 5 — Camera



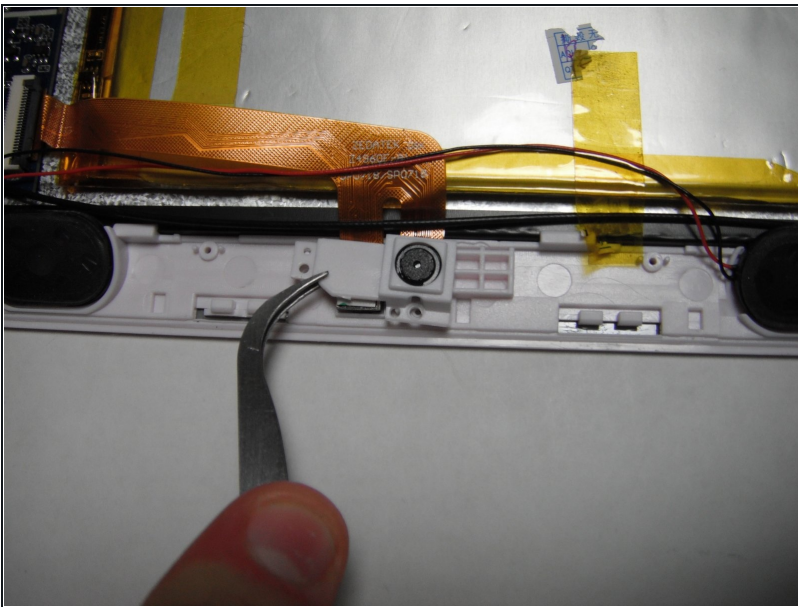
- Turn the tablet over. Locate the left screw.
- Use the magnetic screwdriver to remove the left screw.

Step 6



- There is a bottom screw located to the right of the left screw that was just removed.
- Remove the bottom screw using the magnetic screwdriver.

Step 7



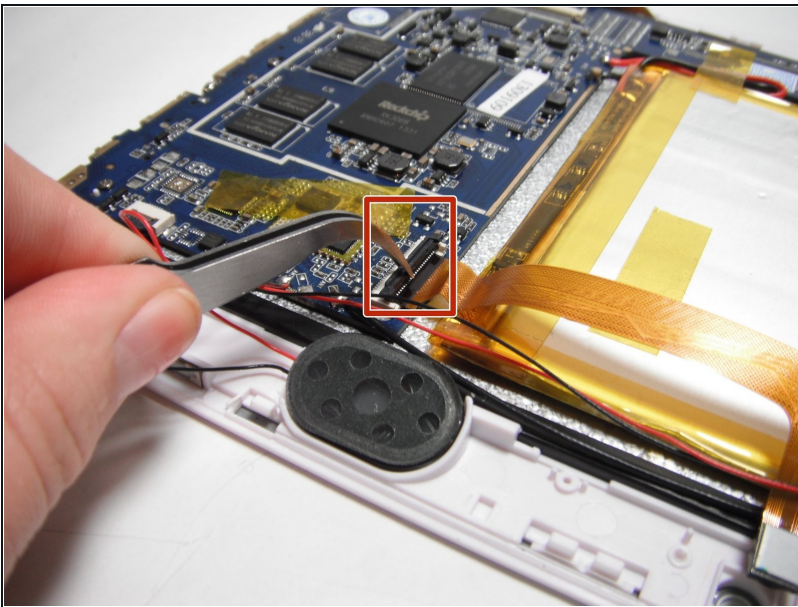
- Remove the entire plastic cover using either tweezers or your fingers.

Step 8



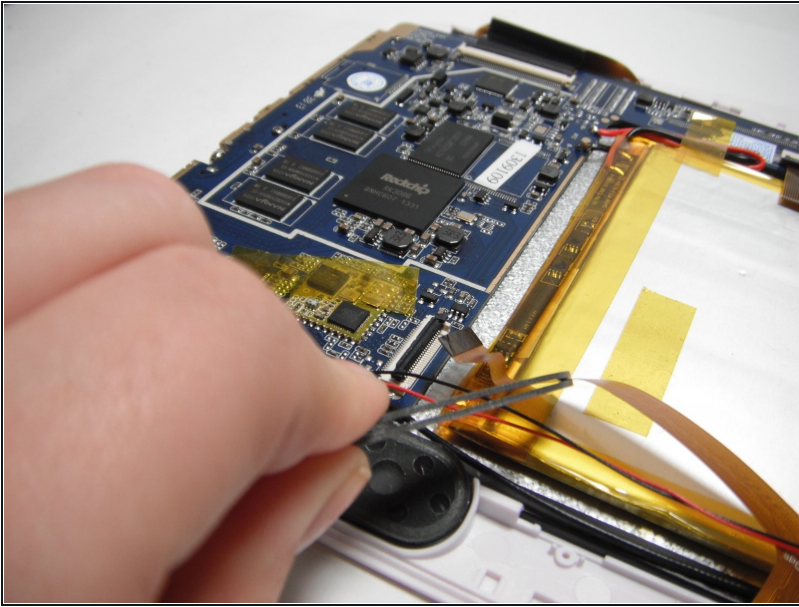
- Brush the surfaces of the cameras to remove any debris that is present.

Step 9



- There is a black plastic cover on the back of the tablet. It is attached to the ribbon cable.
- Use tweezers to rotate the black plastic cover 90 degrees upwards.
- Flip the cover up and pull out the ribbon cable.

Step 10



- Remove the ribbon cable from the port.

To reassemble your device, follow these instructions in reverse order.