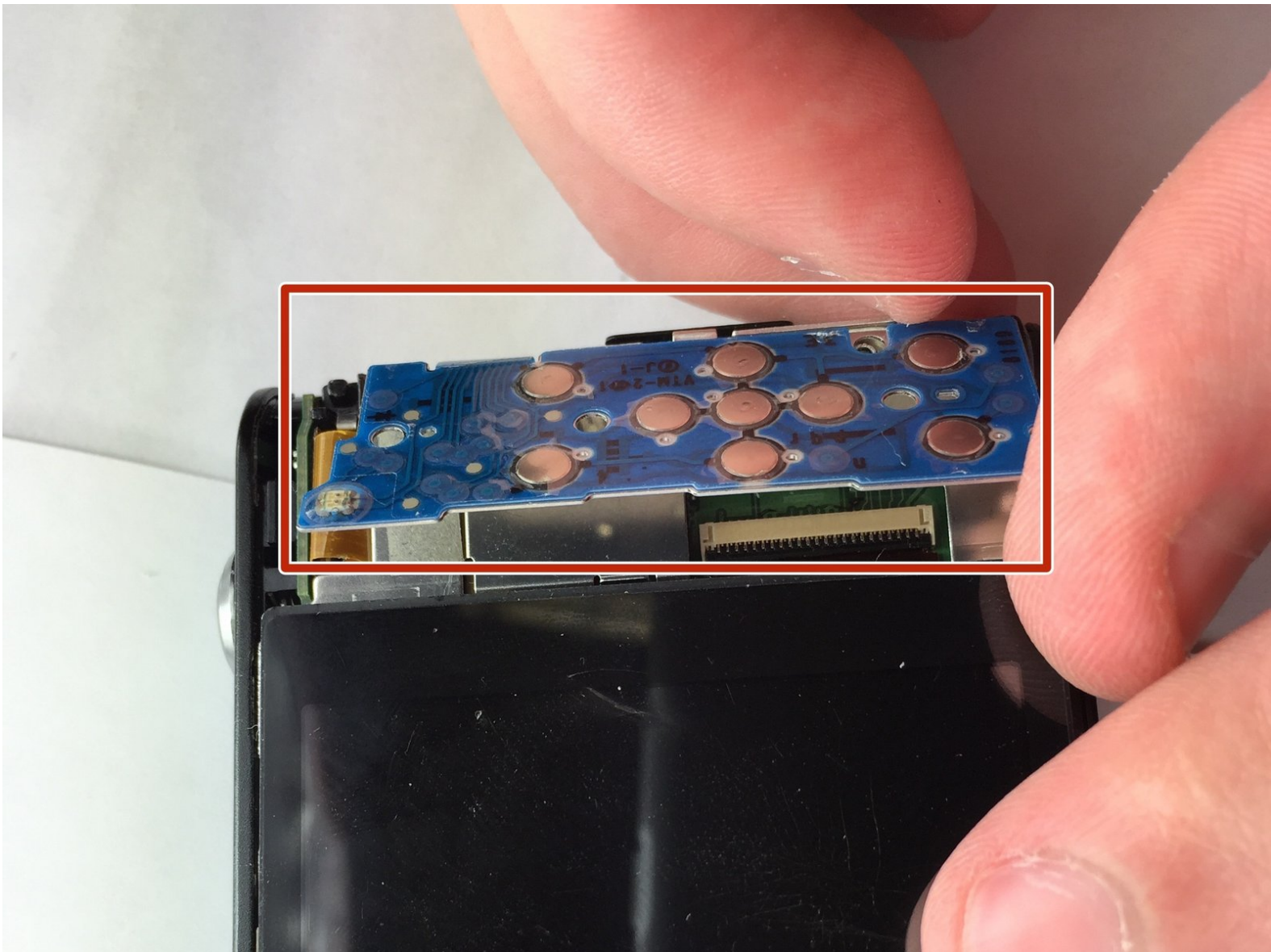




Samsung DV300F Back Button Control Replacement

This guide will serve as a replacement guide for the Back Button Control for the Samsung DV300F.

Written By: Timothy Gordon



INTRODUCTION

This guide will show how to remove the Back Button Control.

TOOLS:

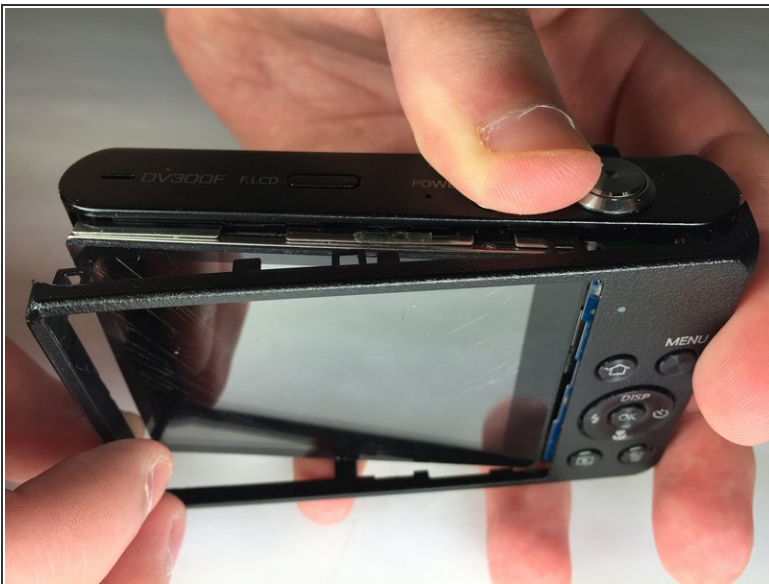
- [Phillips #0 Screwdriver](#) (1)
-

Step 1 — Front and Rear Casing



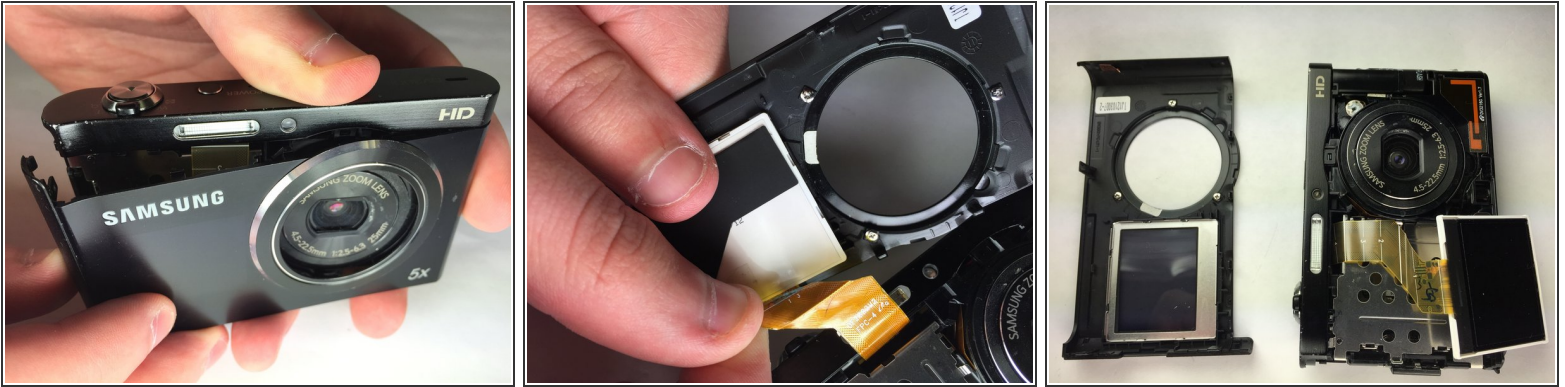
- Remove the two black 4.2 mm screws on the right side of the camera using a Phillips #0 screwdriver.
- Remove the two black 4.2 mm screws on the left side of the camera using a Phillips #0 screwdriver.
- Remove the two black 4.2 mm screws on the bottom of the camera using a Phillips #0 screwdriver.

Step 2



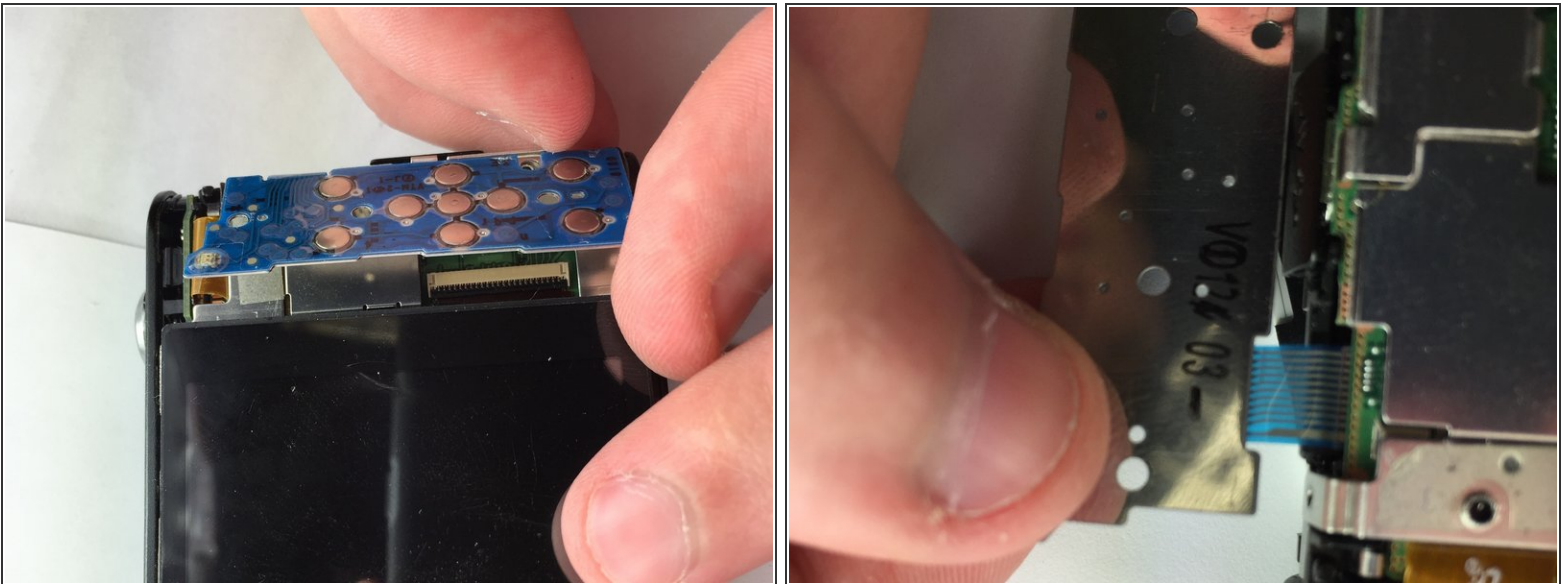
- Remove the back case of the camera carefully.

Step 3



- Remove the front case of the camera.
- Remove the front LCD screen from the front case next to the lens.

Step 4 — Back Button Control



- Remove the blue button control from its position next to the LCD screen.
- Pull the ribbon cable to disconnect the blue button control from the camera.

To reassemble your device, follow these instructions in reverse order.