



APEX TM785CH Circuit Board Replacement

The guide is written so the device's circuit board can be replaced if a major device component no longer works.

Written By: Brian Grascchel



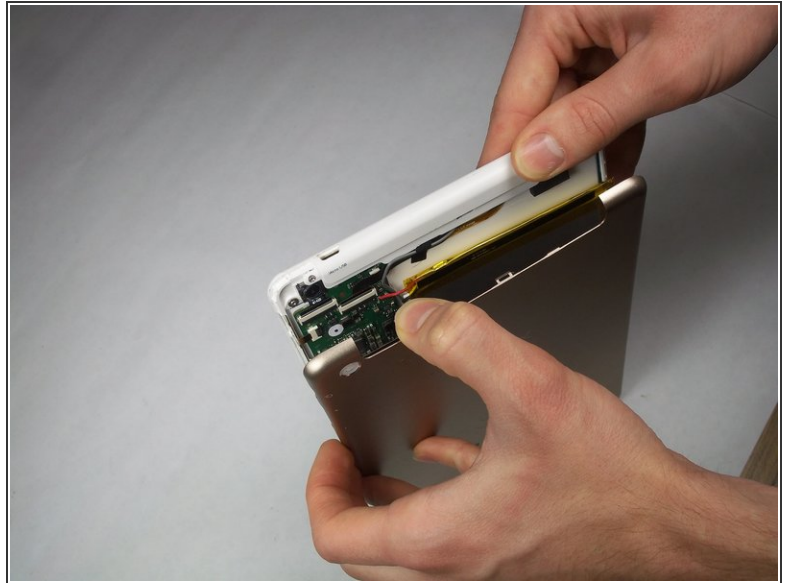
INTRODUCTION

You will be able to break the tablet down to the circuit board and disconnect the components connected to the circuit board.

TOOLS:

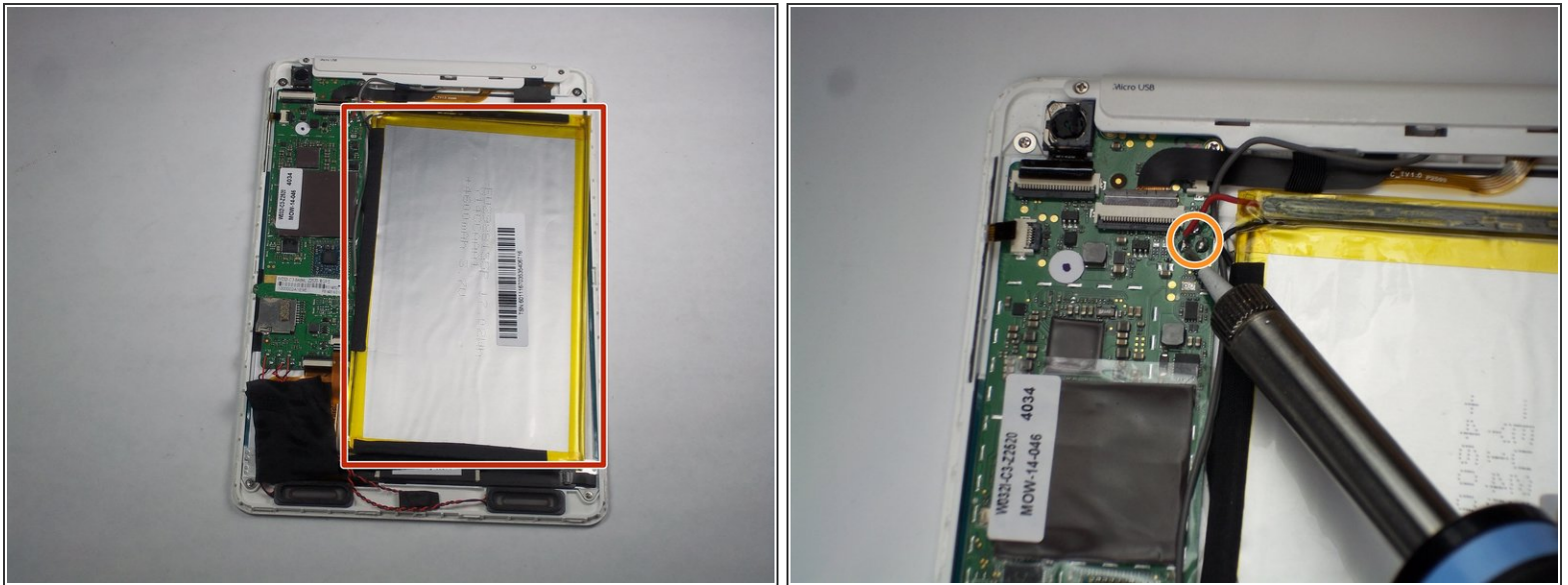
- [Phillips #00 Screwdriver](#) (1)
 - [Spudger](#) (1)
 - [iFixit Opening Tools](#) (1)
 - [Soldering Iron](#) (1)
 - [Tweezers](#) (1)
-

Step 1 — Back Casing



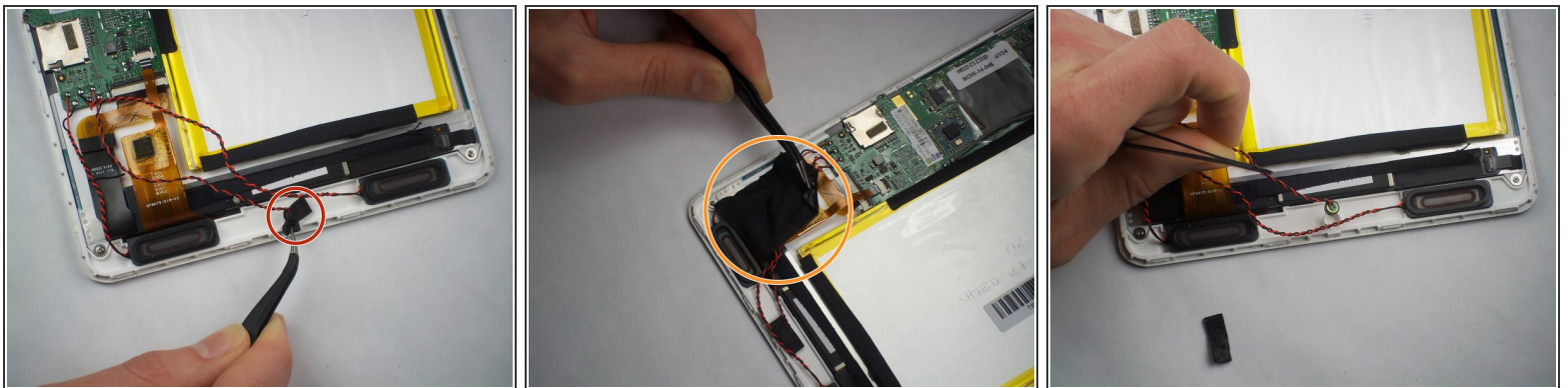
- Start by bending the tablet back at the top white-colored portion to expose an opening between the back cover and the tablet body.
- Wedge a plastic opening tool into the opening and push it down to force the back cover off.
- Move along the top edge of the tablet and repeat the step above.
- Pull the back cover away from the tablet body to completely remove it.

Step 2 — Battery



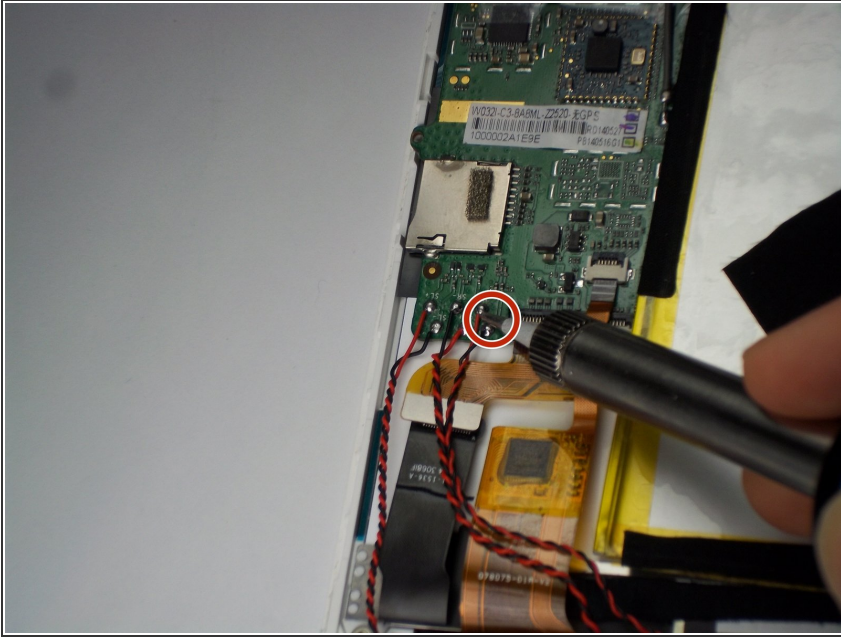
- With the back cover removed, you can now see the battery.
- You will need a soldering/desoldering kit to [desolder](#) the 3 battery leads to the circuit board.

Step 3 — Microphone



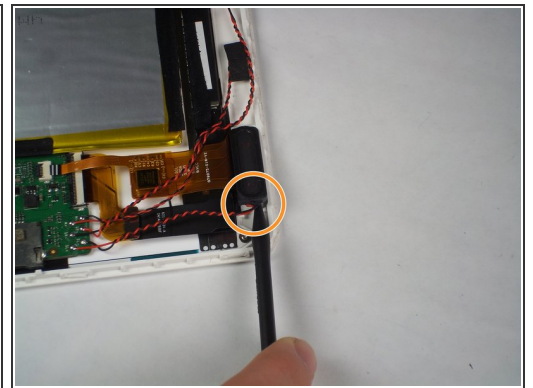
- The microphone is located in the bottom center of the tablet.
- Remove the black tape holding the wires down.
- Remove the black tape holding the microphone in place.
- The microphone is now exposed and can be gently pulled out of the socket.

Step 4



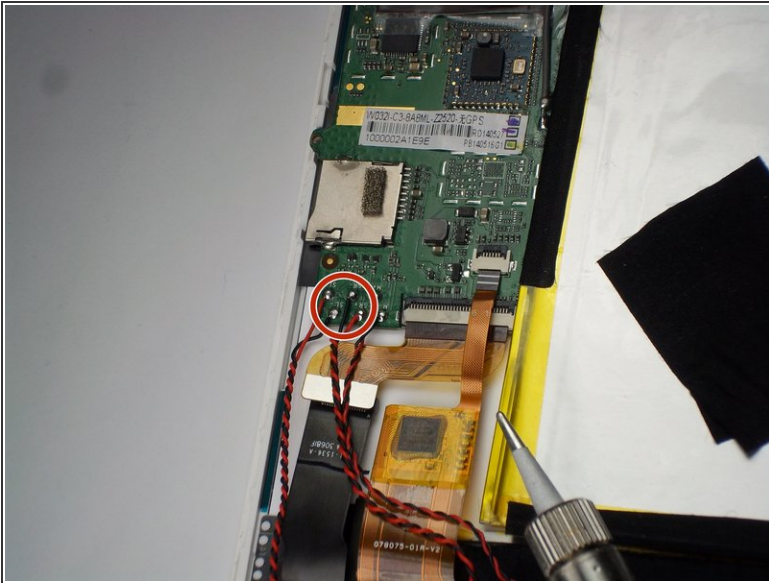
- You will need a soldering/desoldering kit to [desolder](#) the 2 leads where the microphone connects to the circuit board.

Step 5 — Speakers



- The speakers are located towards the bottom left and bottom right corners of the tablet.
- If not already done, remove the black tape holding the wires down.
- Wedge a spudger underneath the speaker in its socket, near where the wires are connected. You can then pry out the speakers.

Step 6



- You will need a soldering/desoldering kit to [desolder](#) the 4 leads where the speakers connect to the circuit board.

Step 7 — Front Camera



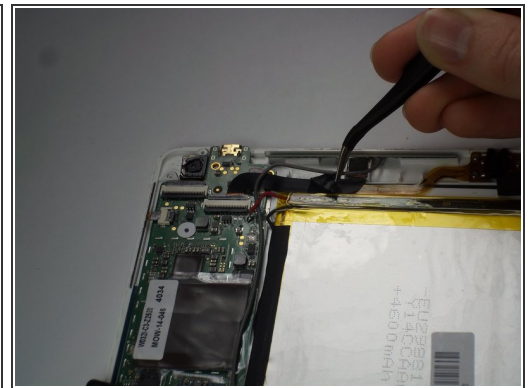
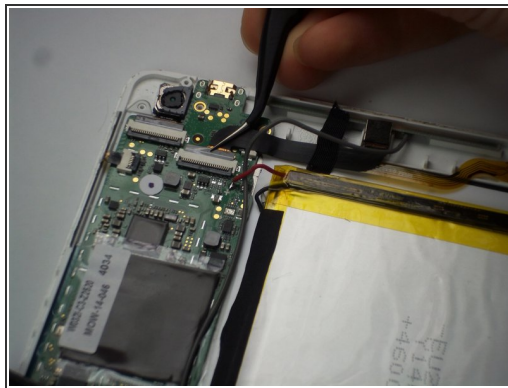
- To get to the front camera, you will first need to remove the top panel.
- Unscrew two 2.25 mm Phillips screws with a #00 screwdriver from the top plastic panel to remove it.

Step 8



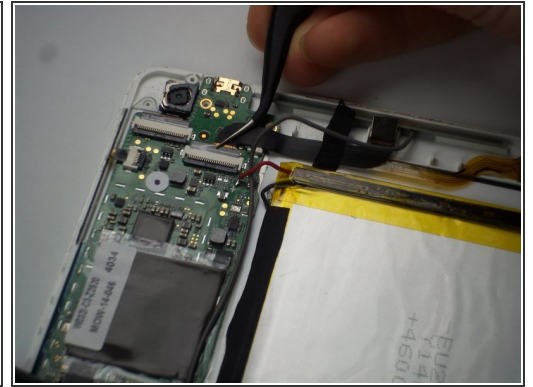
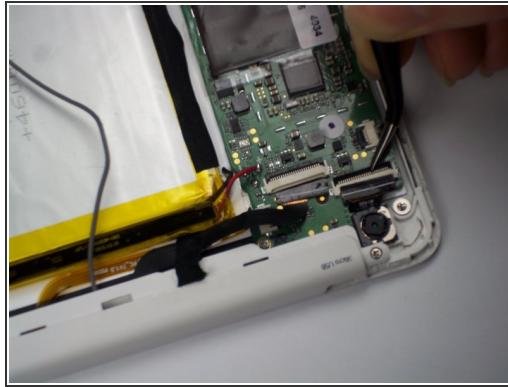
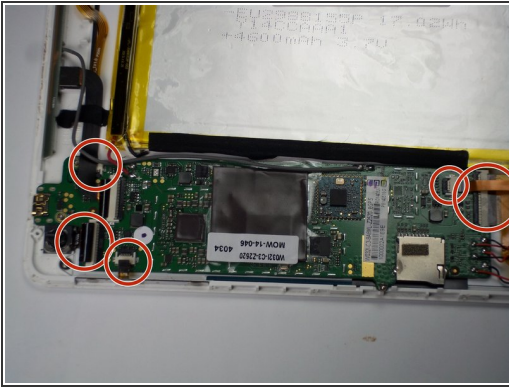
- Once unscrewed, use a spudger to pop the panel off by wedging it underneath the panel.

Step 9



- First, use plastic coated tweezers to pull up the black release tab.
 - Pull on the black connector with tweezers as close as possible to the white connector base, making sure not to pull on the connector base.
- ⚠ It is important to be careful not to damage the black connector tape or the white base.
- Next, use the tweezers to peel off the tape holding down the connector to the front camera.
 - The front camera can now be removed from its socket.

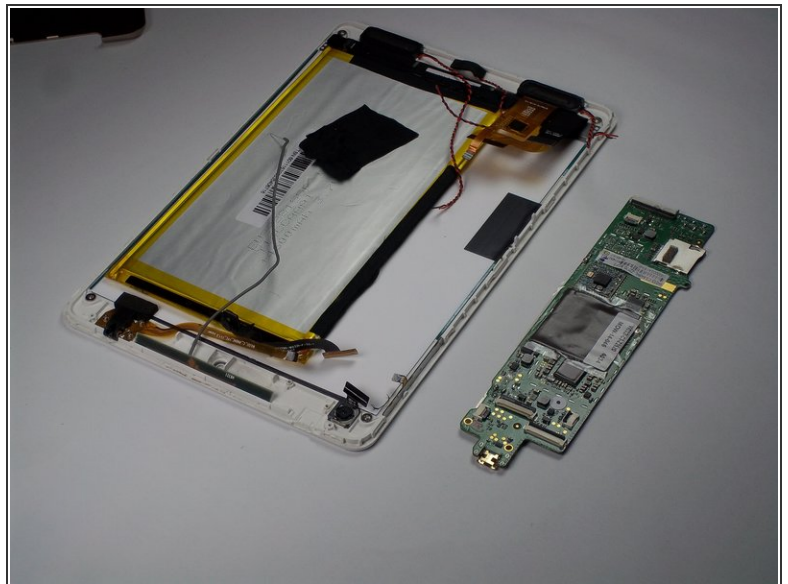
Step 10 — Circuit Board



- After removing the top panel, battery, speakers, microphone, and front camera from the tablet, you will also need to use the tweezers to remove the connectors indicated in the same method as the previous step.

⚠ It is important to be careful not to damage the black connector tape or the white base.

Step 11



- Using a Phillips screwdriver, remove three 2.25 mm screws from the circuit board.
- The circuit board can now be removed from the tablet.

To reassemble your device, follow these instructions in reverse order.