



# APEX TM785CH Circuit Board Replacement

You will be able to break the tablet down to...

Written By: Brian Grascel



# INTRODUCTION

You will be able to break the tablet down to the circuit board and disconnect the components connected to the circuit board.

---

## TOOLS:

[Phillips #00 Screwdriver](#) (1)

[Spudger](#) (1)

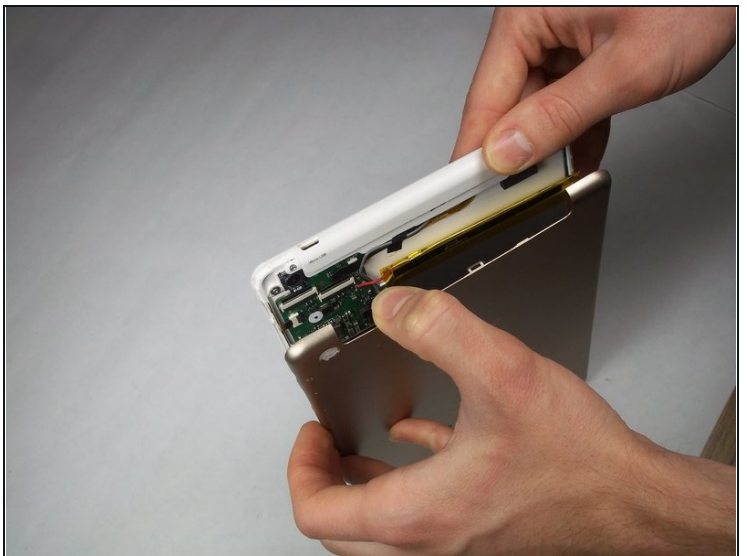
[iFixit Opening Tool](#) (1)

[Soldering Iron](#) (1)

[Tweezers](#) (1)

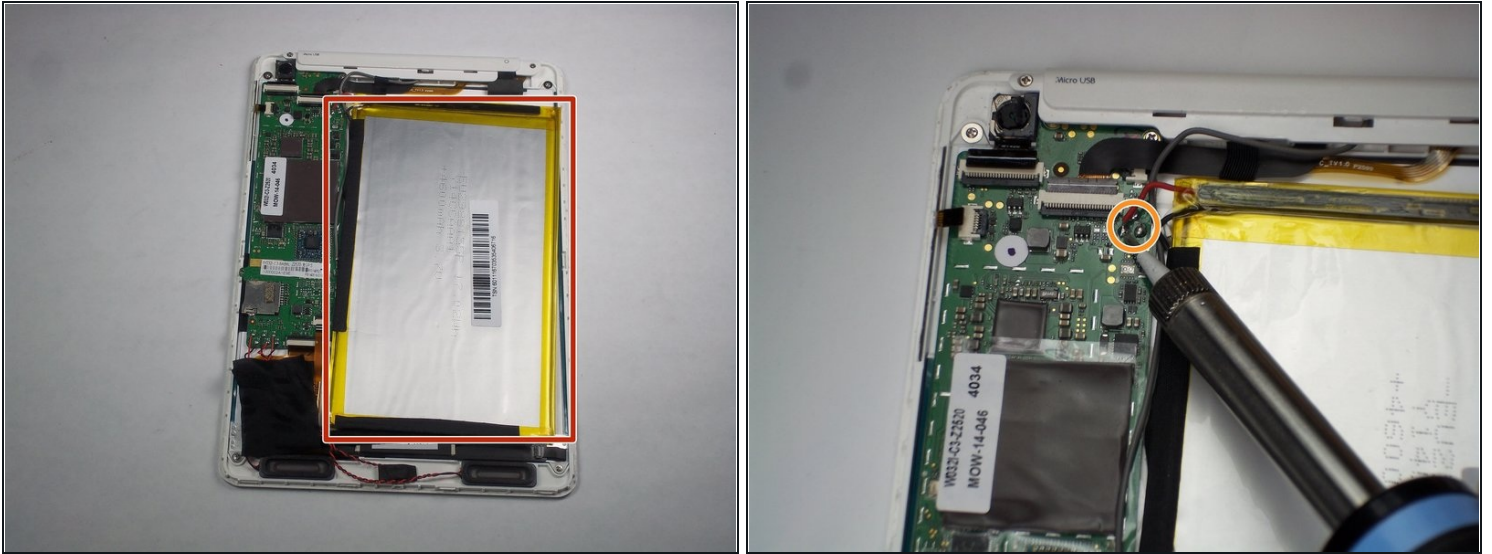
---

## Step 1 — Back Casing



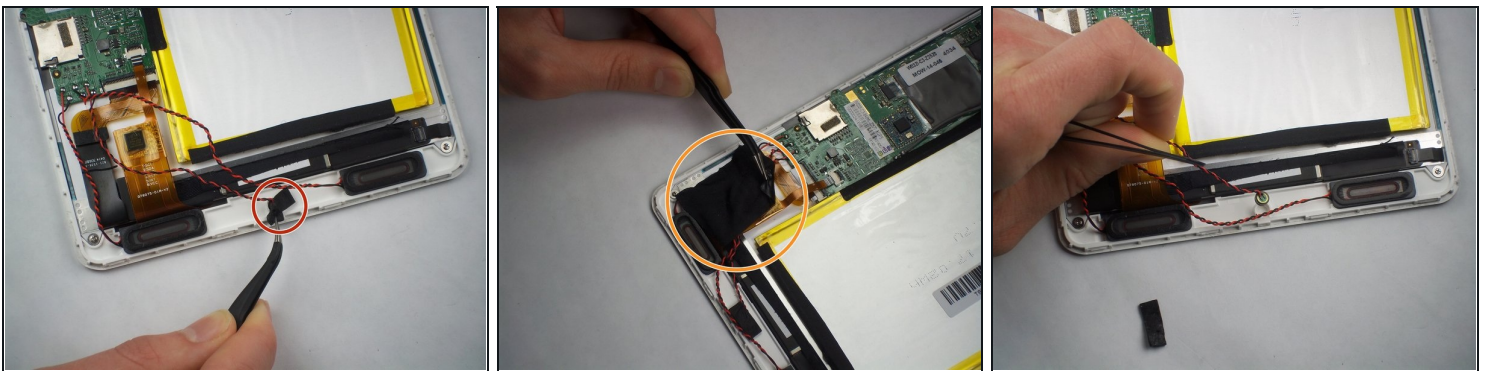
- Start by bending the tablet back at the top white-colored portion to expose an opening between the back cover and the tablet body.
- Wedge a plastic opening tool into the opening and push it down to force the back cover off.
- Move along the top edge of the tablet and repeat the step above.
- Pull the back cover away from the tablet body to completely remove it.

## Step 2 — Battery



- With the back cover removed, you can now see the battery.
- You will need a soldering/desoldering kit to [desolder](#) the 3 battery leads to the circuit board.

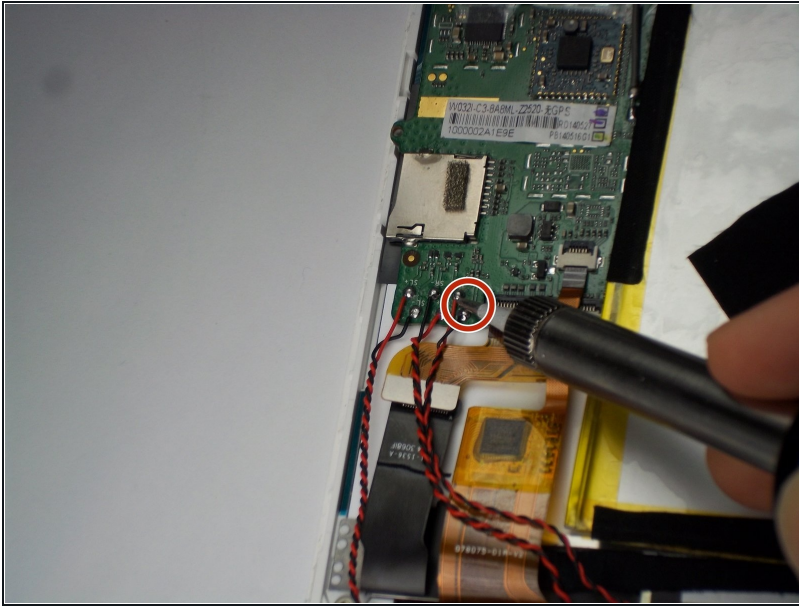
## Step 3 — Microphone



- The microphone is located in the bottom center of the tablet.
- Remove the black tape holding the wires down.
- Remove the black tape holding the microphone in place.
- The microphone is now exposed and can be gently pulled out of the socket.

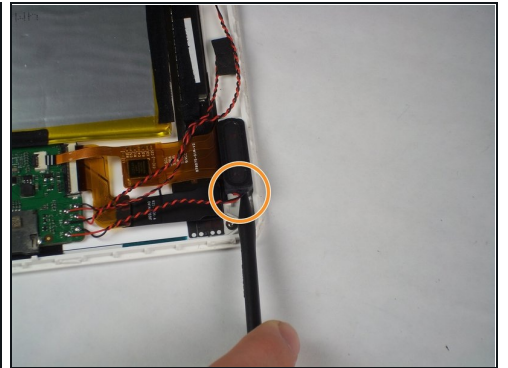


## Step 4



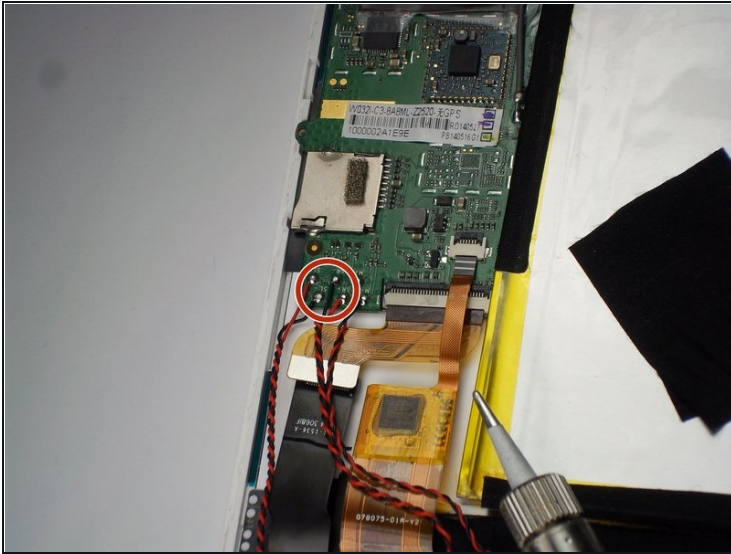
- You will need a soldering/desoldering kit to [desolder](#) the 2 leads where the microphone connects to the circuit board.

## Step 5 — Speakers



- The speakers are located towards the bottom left and bottom right corners of the tablet.
- If not already done, remove the black tape holding the wires down.
- Wedge a spudger underneath the speaker in its socket, near where the wires are connected. You can then pry out the speakers.

## Step 6



- You will need a soldering/desoldering kit to [desolder](#) the 4 leads where the speakers connect to the circuit board.

## Step 7 — Front Camera



- To get to the front camera, you will first need to remove the top panel.
- Unscrew two 2.25 mm Phillips screws with a #00 screwdriver from the top plastic panel to remove it.

## Step 8



- Once unscrewed, use a spudger to pop the panel off by wedging it underneath the panel.

## Step 9



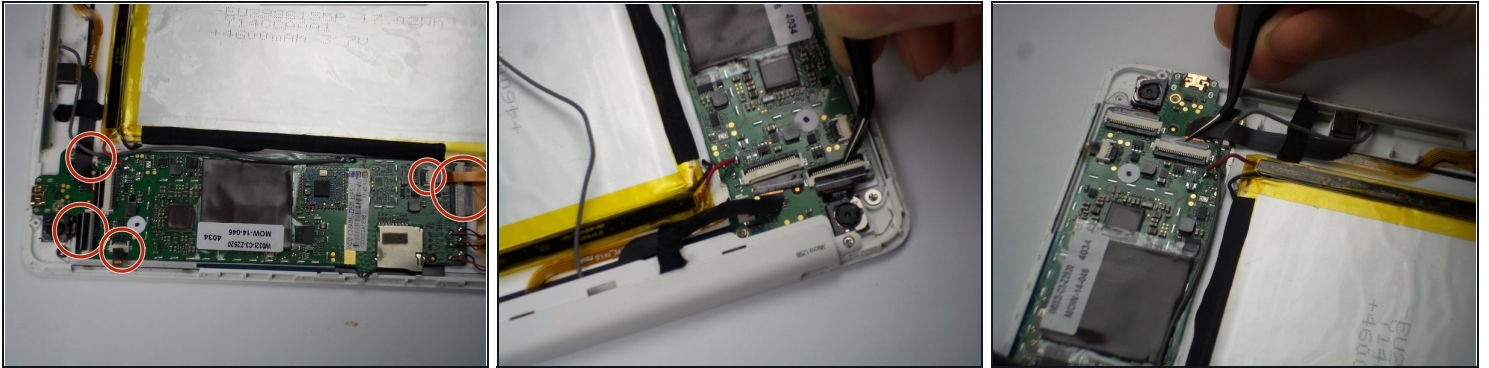
- First, use plastic coated [tweezers](#) to pull up the black release tab.
- Pull on the black connector with tweezers as close as possible to the white connector base, making sure not to pull on the connector base.

⚠ It is important to be careful not to damage the black connector tape or the white base.

- Next, use the tweezers to peel off the tape holding down the connector to the front camera.
- The front camera can now be removed from its socket.



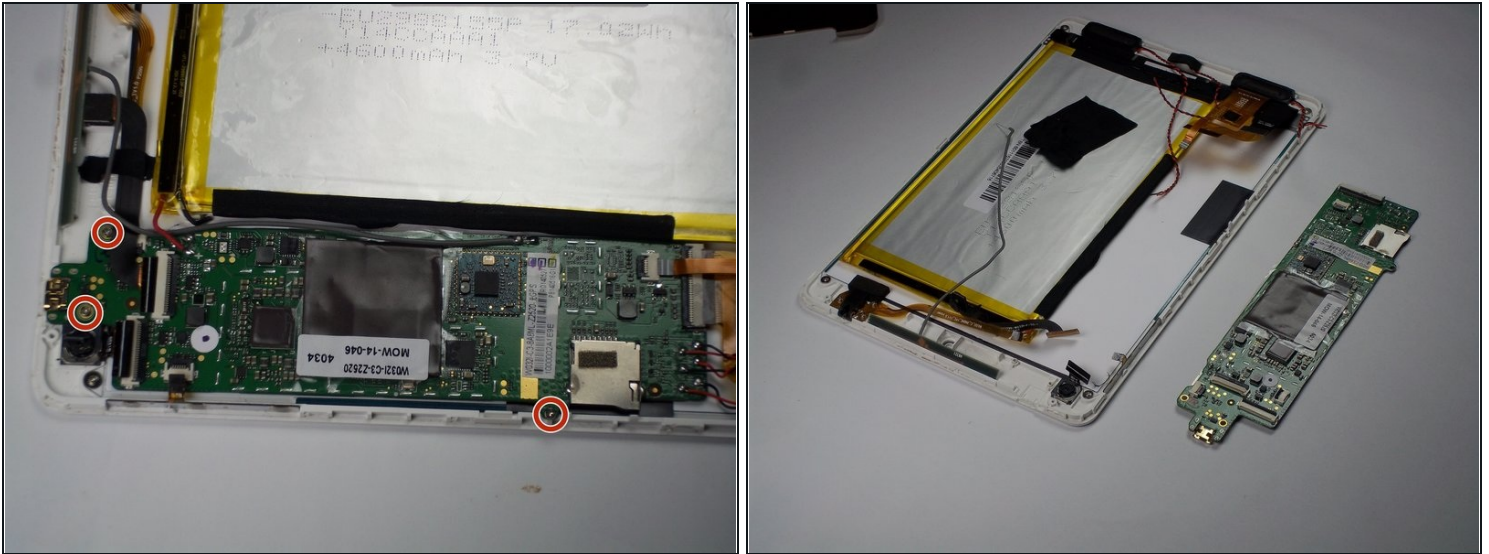
## Step 10 — Circuit Board



- After removing the top panel, battery, speakers, microphone, and front camera from the tablet, you will also need to use the [tweezers](#) to remove the connectors indicated in the same method as the previous step.

⚠ It is important to be careful not to damage the black connector tape or the white base.

## Step 11



- Using a Phillips screwdriver, remove three 2.25 mm screws from the circuit board.
- The circuit board can now be removed from the tablet.

To reassemble your device, follow these instructions in reverse order.