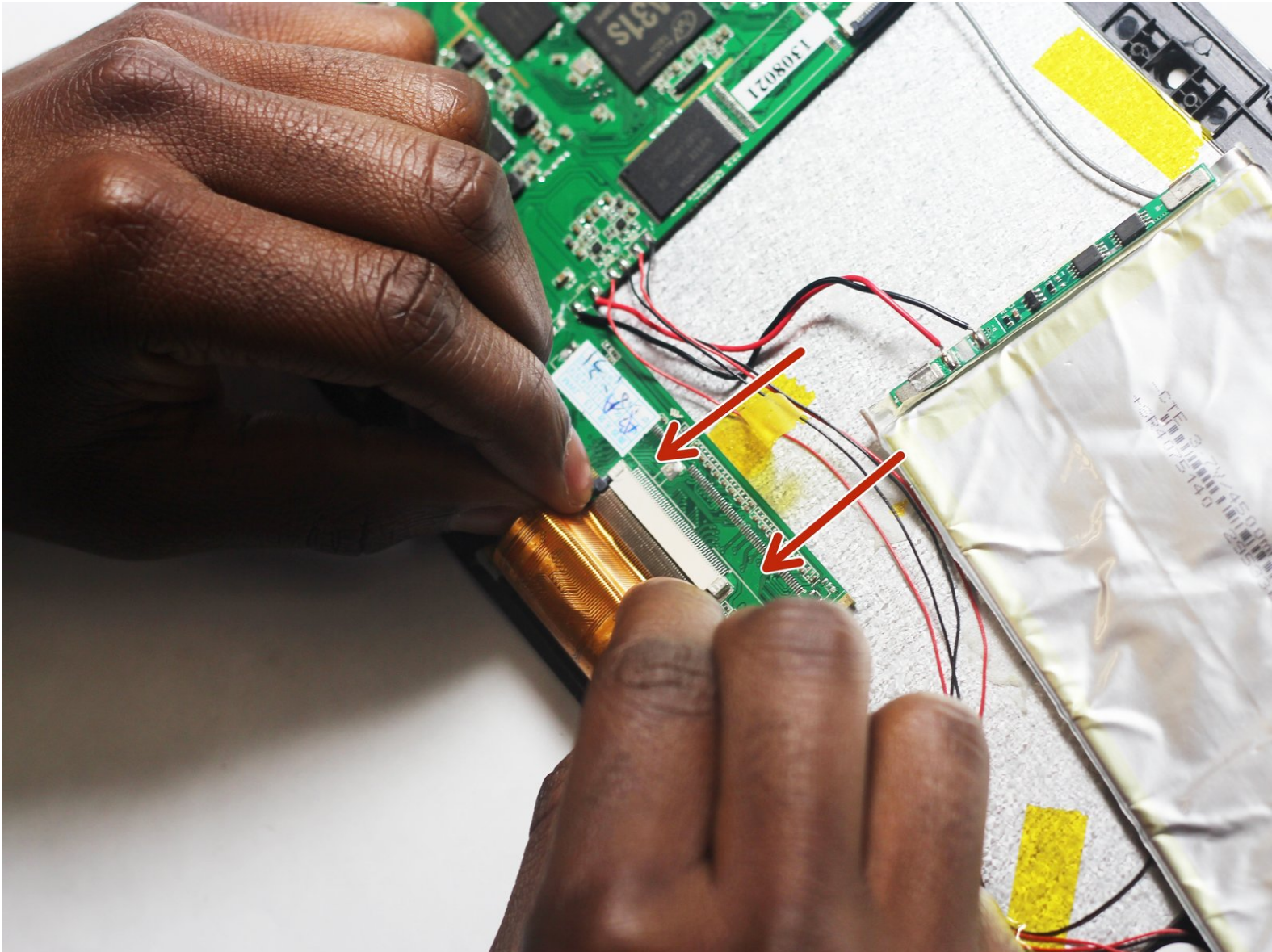




SuperSonic Matrix Mid SC-999 Motherboard Replacement

This guide will teach you how to replace the motherboard in the device.

Written By: Harris Dagha



INTRODUCTION

In this guide you will remove the back cover of the device and disconnect the motherboard from the surrounding components. You will then unscrew the motherboard from the device and replace it if need be.

Because this task requires the use of a soldering iron, prior experience with soldering/desoldering will be beneficial.

TOOLS:

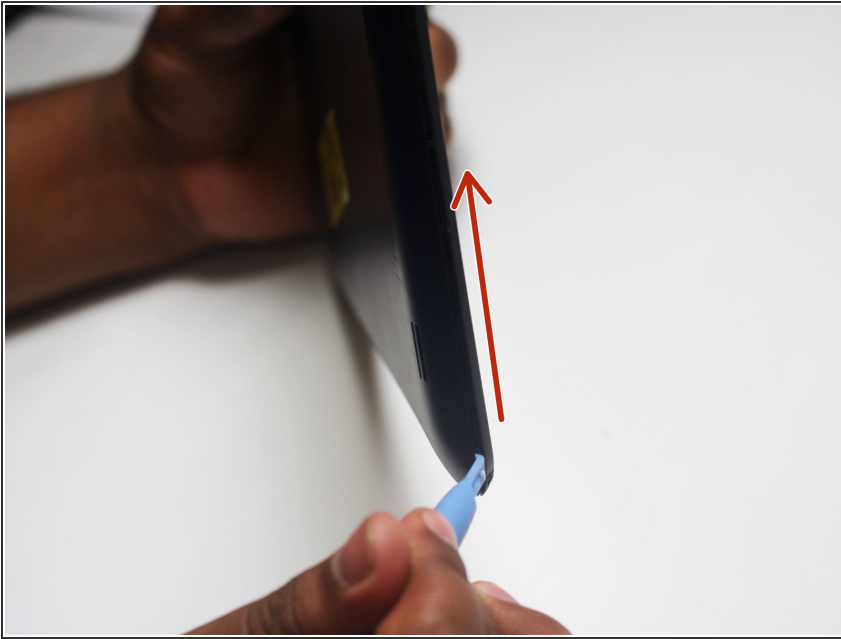
- [iFixit Opening Tools](#) (1)
 - [Phillips #00 Screwdriver](#) (1)
 - [iOpener](#) (1)
 - [Spudger](#) (1)
 - [Safety Glasses](#) (1)
 - [Tweezers](#) (1)
 - [Soldering Iron](#) (1)
-

Step 1 — Back Cover



- Wedge the plastic opening tool between the back cover of the device and the front panel.
- You will hear a *snapping* sound as the cover is separated from the body of the device.

Step 2



- Slide the opening tool along the seam between the front panel and the back cover to un-clip the remaining connections around the device.
- Again, you will hear a *snapping* sound as the cover is separated from the body of the device.

Step 3



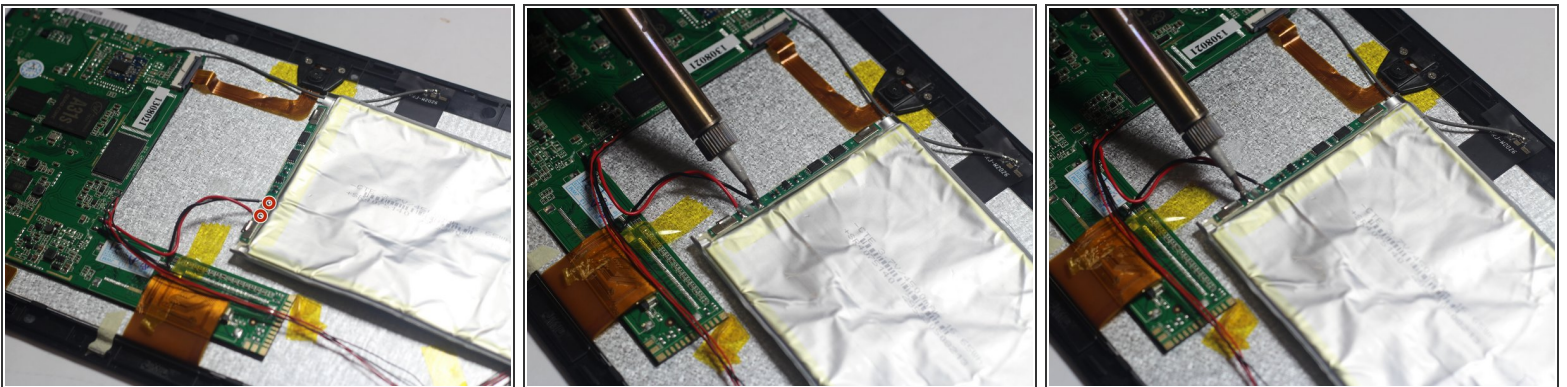
- Lift the back cover from the body of the device to expose the internal components.

Step 4 — Battery



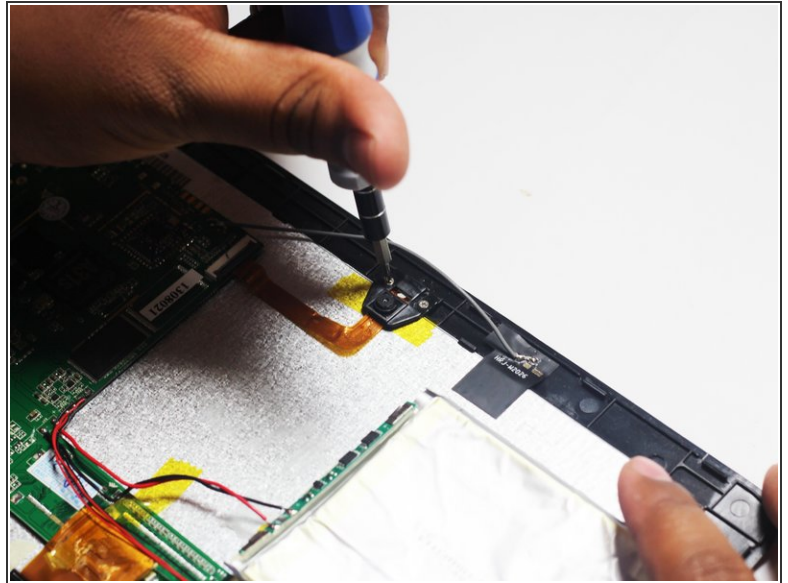
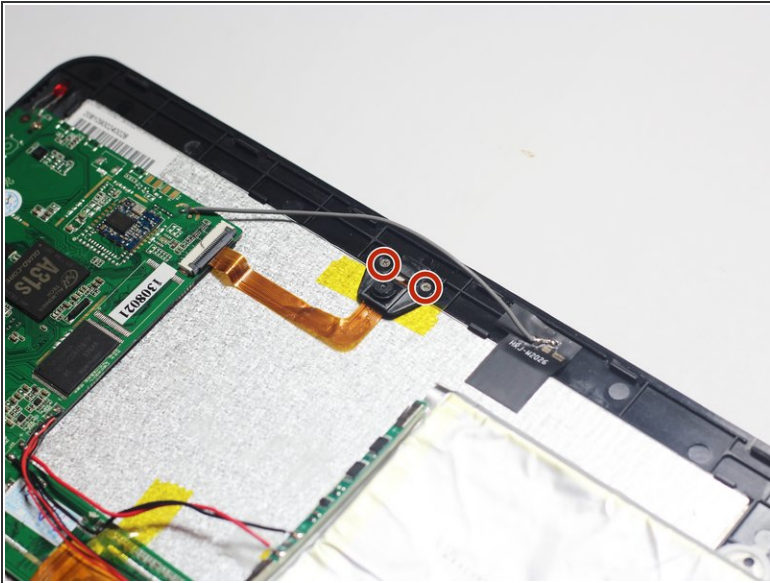
- Remove the Battery
 - The battery is secured to the back panel with tape and glue.
 - Peel back the tape around the battery and discard it.
 - Tear through the adhesive holding the battery by using the spudger tool.

Step 5



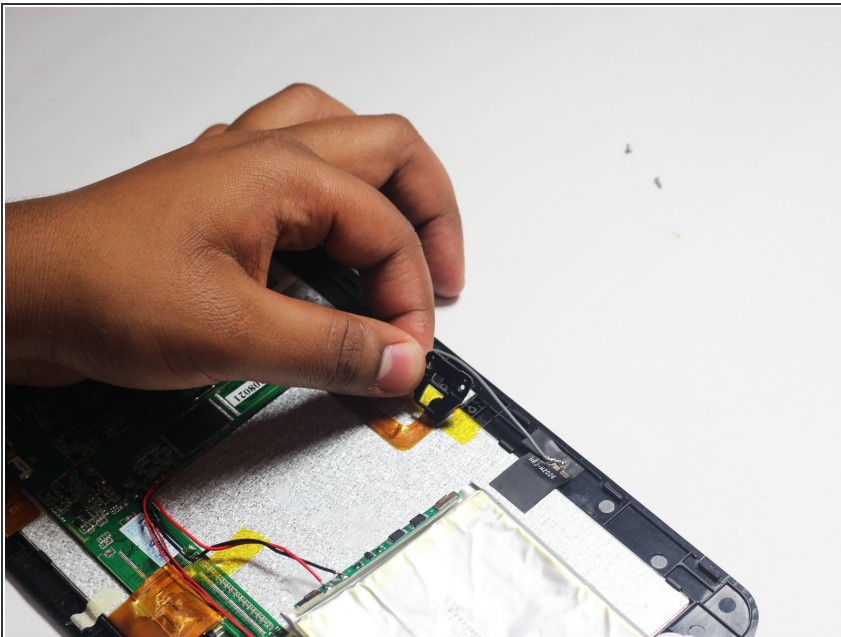
- Desolder the 2 Battery Wires
 - The Battery has two wires connected to the motherboard (one black and one red).
 - ☞ If you're unfamiliar with soldering or desoldering check out [this guide](#).
 - ⚠ Be sure to wear protective eye wear. The soldering iron will become extremely hot and a potential danger, so make sure you are aware of your surroundings.

Step 6 — Rear Facing Camera



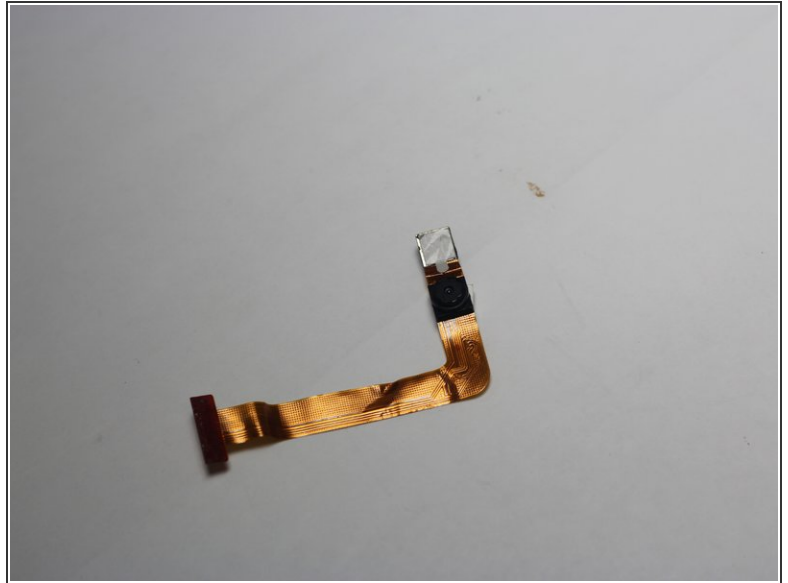
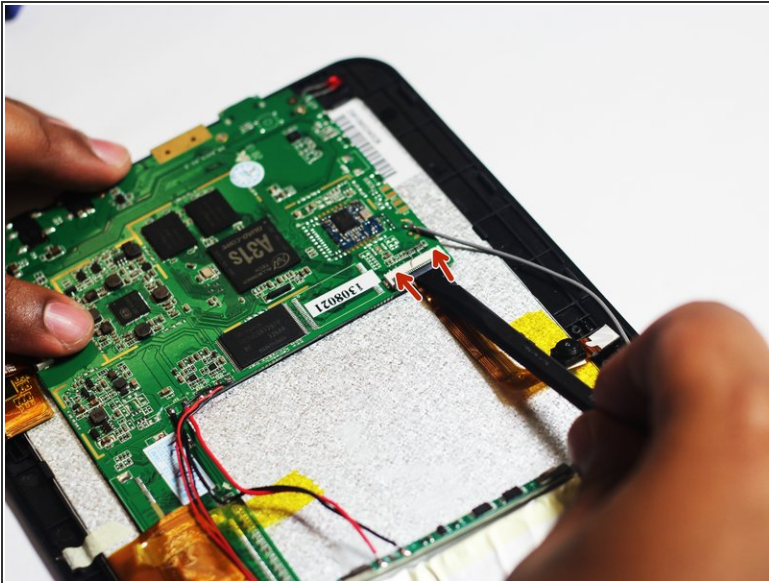
- Remove the two Phillips #00 screws attaching the housing of the camera to the device.

Step 7



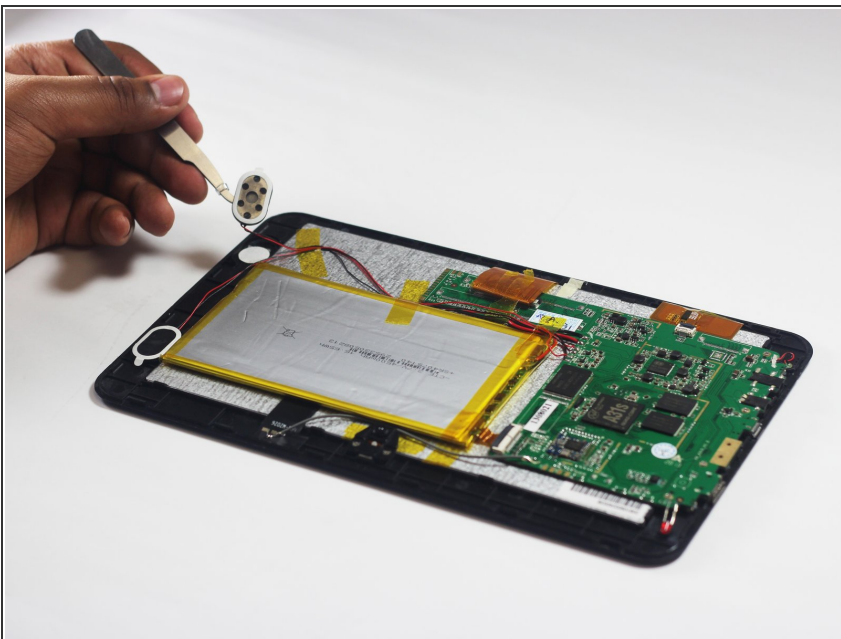
- With the screws removed you should easily be able to remove the camera unit.

Step 8



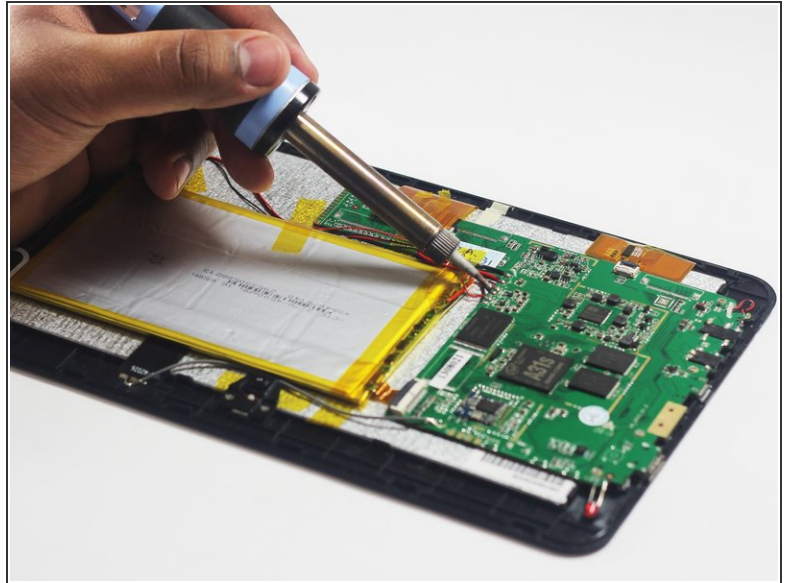
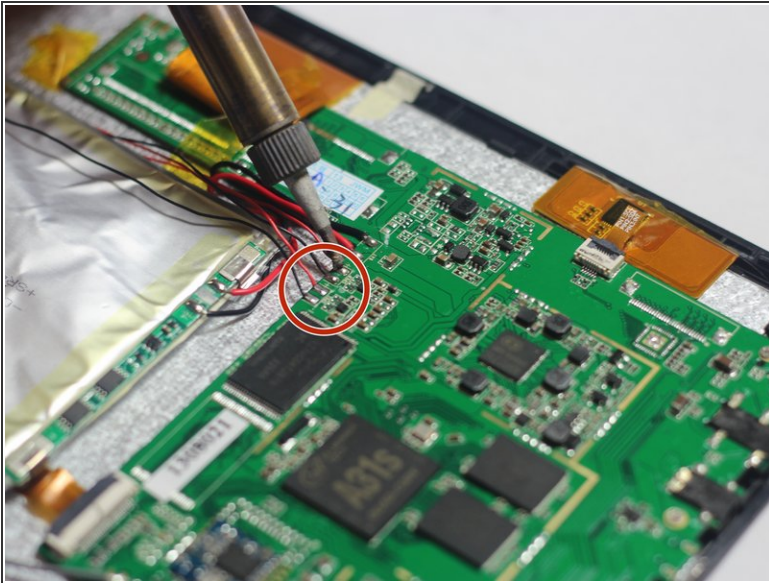
- Follow the camera unit back to the motherboard.
- Use the spudger tool to remove the camera.

Step 9 — Speaker



- Remove the Speakers
- Use the tweezers to remove the speakers from their compartments.

Step 10



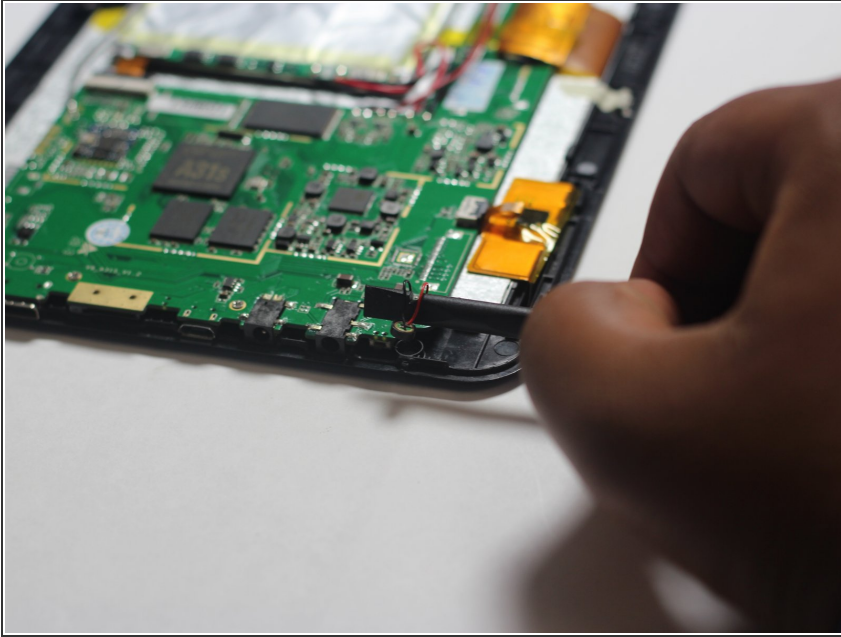
- Desolder the 4 Speaker Wires

- ⓘ These wires connect the speakers to the motherboard. They are the thinnest wires.

- 🔧 If you're unfamiliar with soldering or desoldering check out [this guide](#).

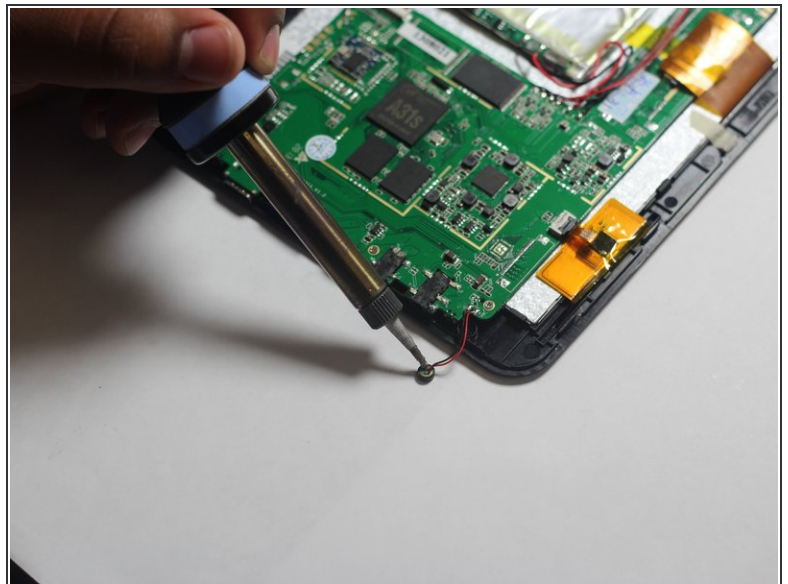
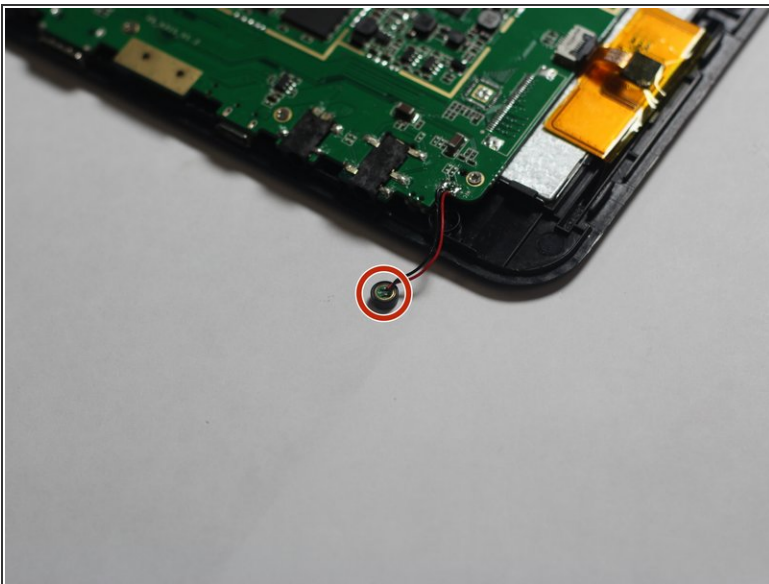
- ⚠ Be sure to wear protective eye wear. Also, keep in mind that the soldering iron will become extremely hot.

Step 11 — Microphone



- Remove the microphone from its compartment.
- ⓘ The microphone is located toward the bottom left corner of the device (assuming the speakers are located on the right side of you).

Step 12

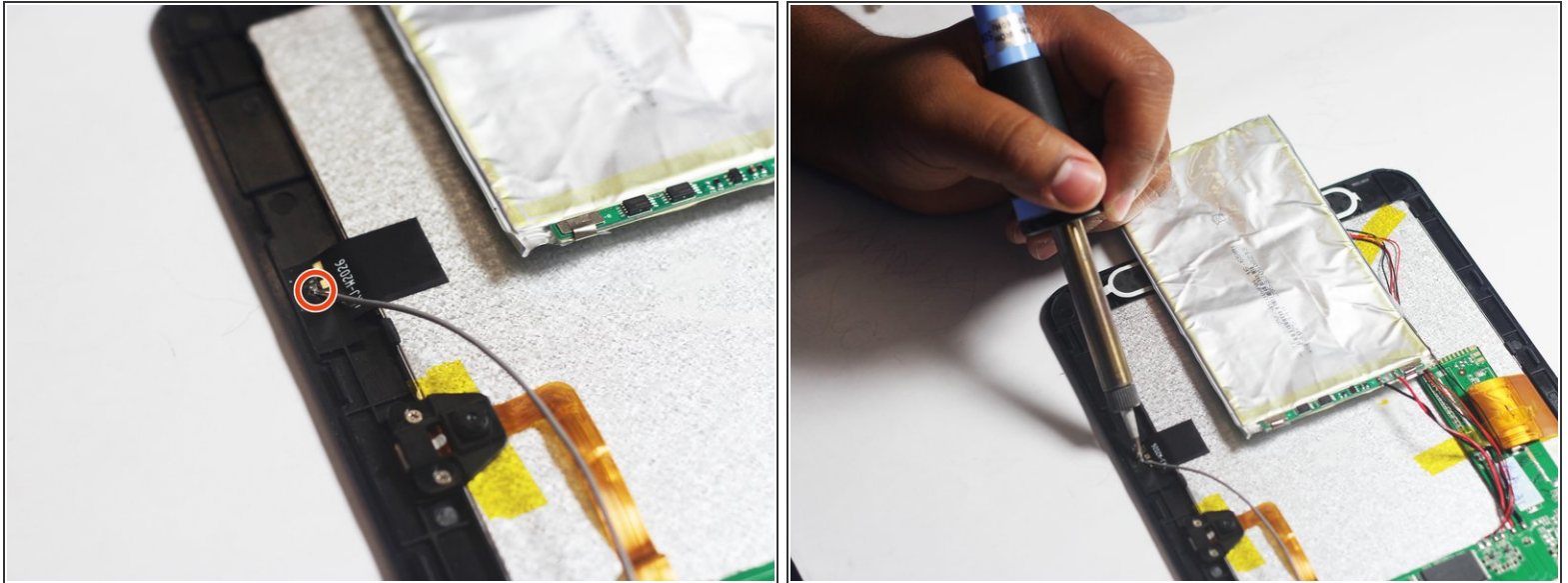


- Use the soldering iron to remove the wires connected to the microphone.

✦ If you're unfamiliar with soldering or desoldering, check out [this guide](#).

⚠ Be sure to wear protective eye wear. Also, keep in mind that the soldering iron will become extremely hot.

Step 13 — FM Antenna

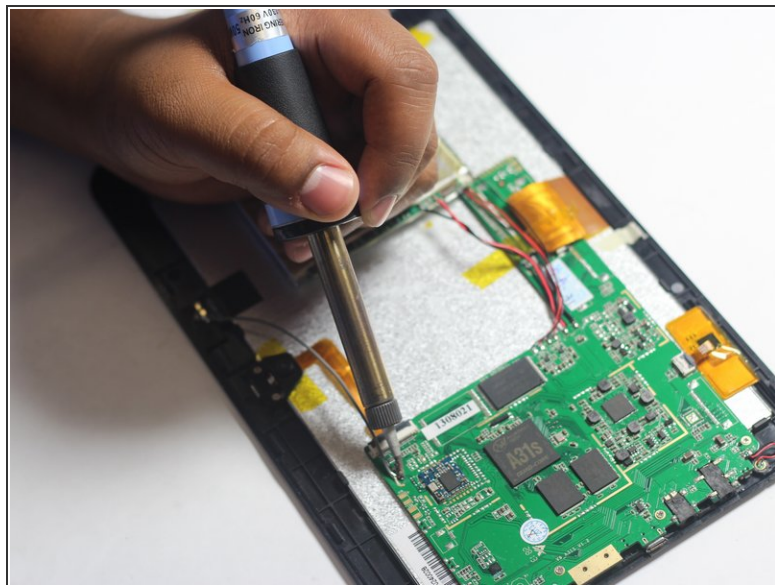
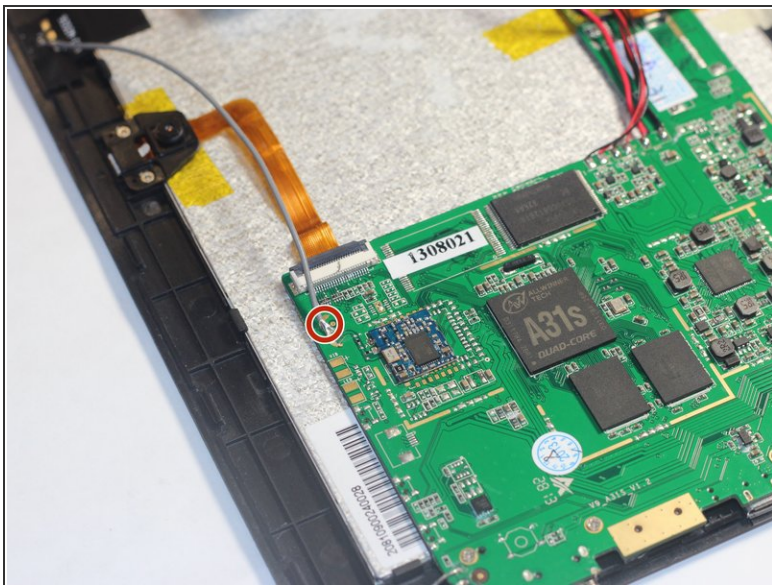


- Use a soldering iron to desolder the region circled in red.

✦ If you're unfamiliar with soldering or desoldering check out [this guide](#).

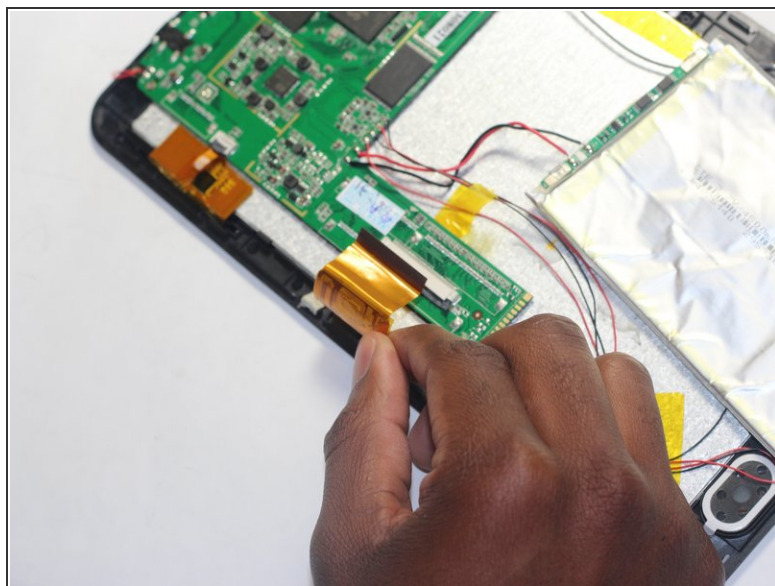
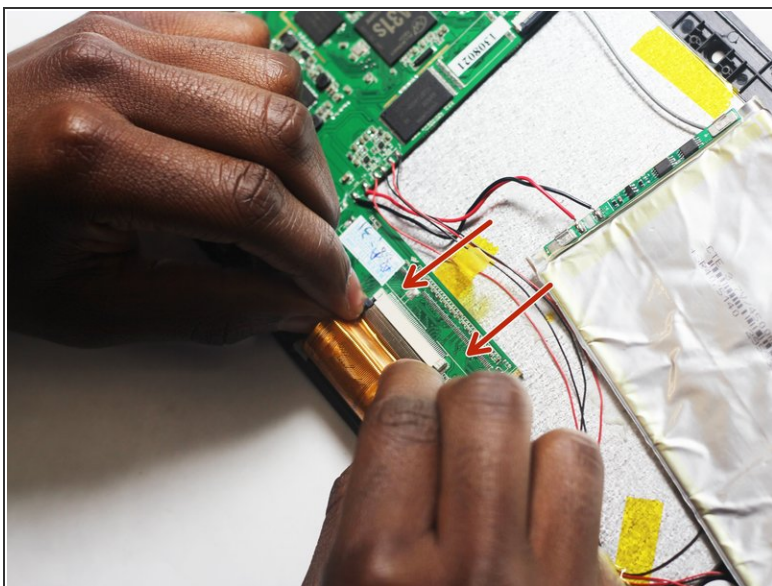
⚠ Be sure to wear protective eye wear. The soldering iron will become extremely hot and a potential danger, so be aware of your surroundings.

Step 14



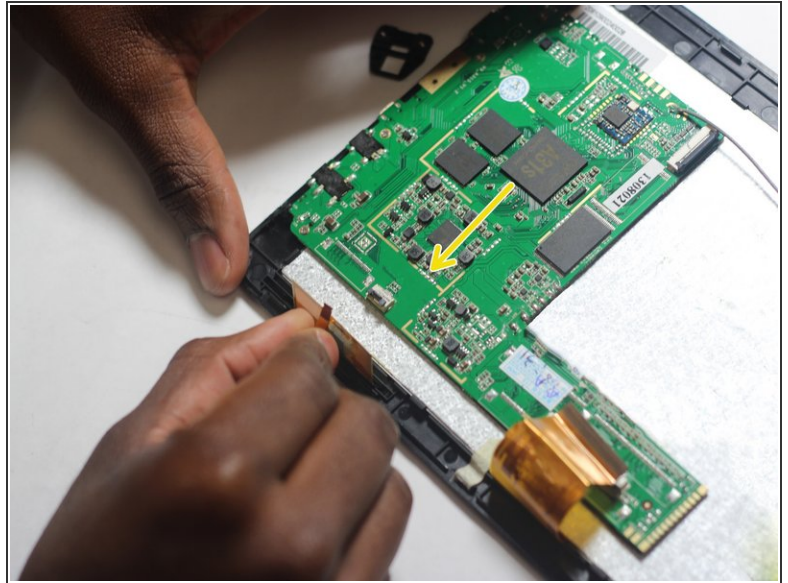
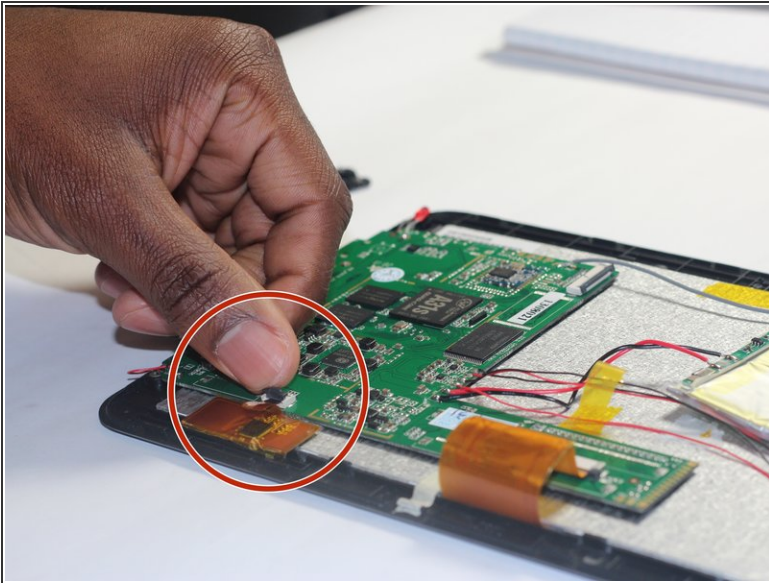
- Desolder the FM antenna from the motherboard.

Step 15 — Motherboard



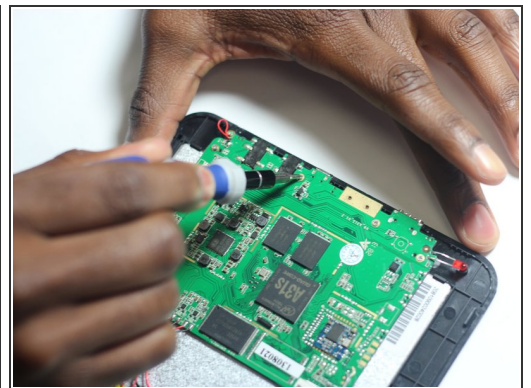
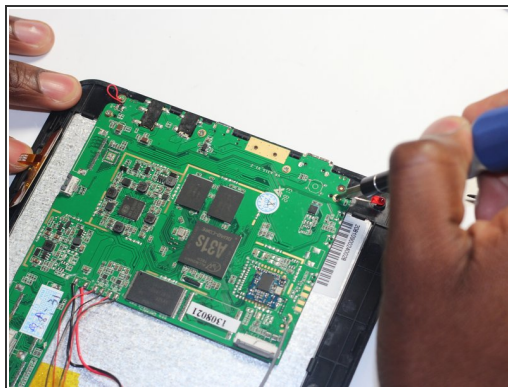
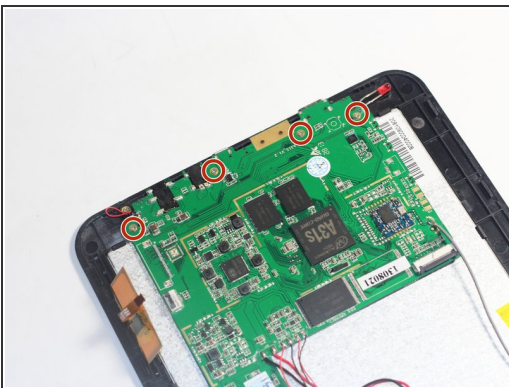
- Remove the large ribbon cable from the socket that attaches it to the motherboard.
- Pull down on the dark grey sliders located on both sides of the ribbon cable to release it.

Step 16



- Remove the small ribbon cable from the socket that attaches it to the motherboard.
- Flip the dark grey latch to release the ribbon cable from the motherboard.

Step 17



- Remove the four Phillips #00 screws attaching the motherboard to the device.

To reassemble your device, follow these instructions in reverse order.