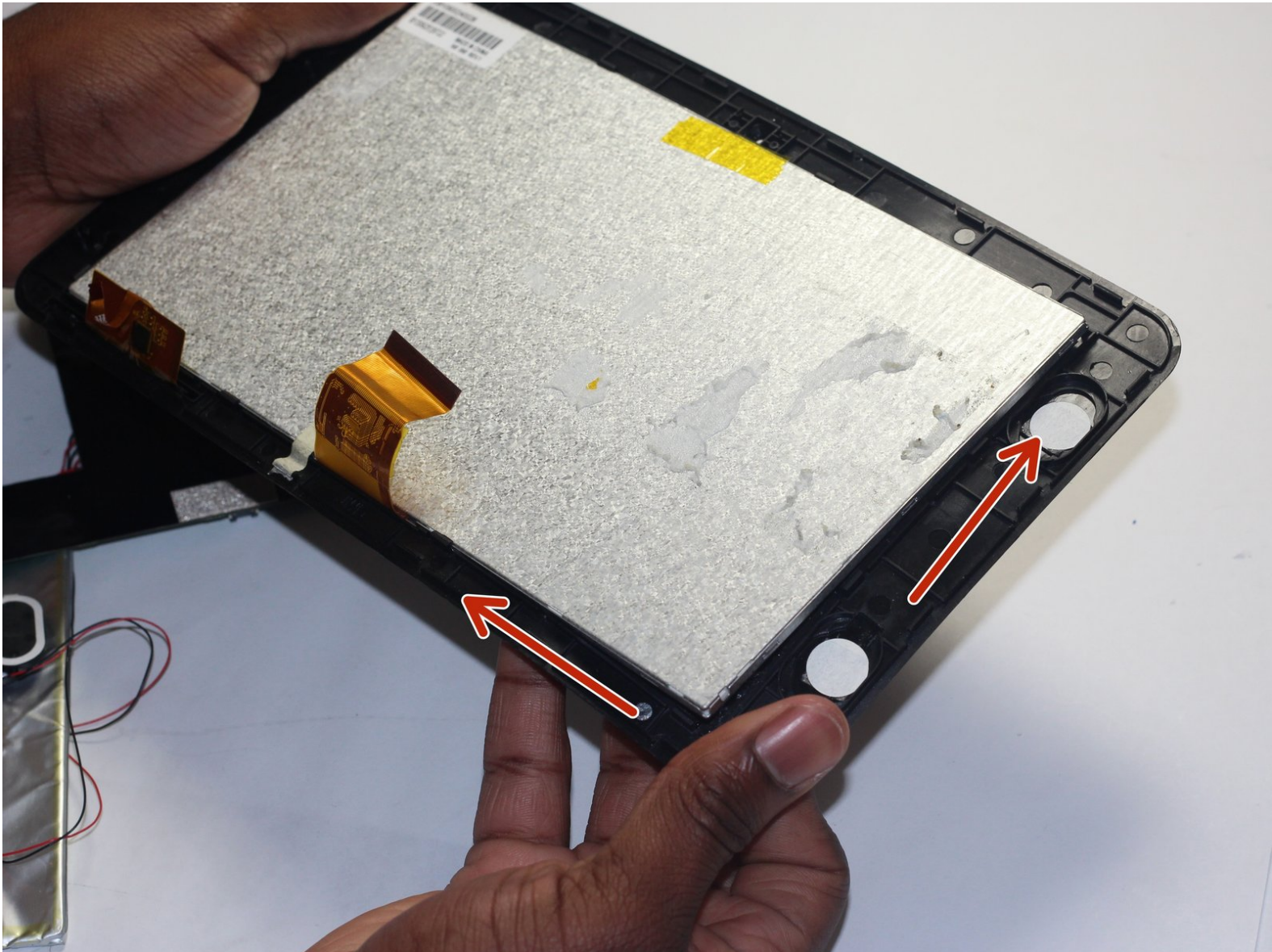




SuperSonic Matrix Mid SC-999 LCD Replacement

This guide will show you how to replace the 9" touchscreen.

Written By: Harris Dagha



INTRODUCTION

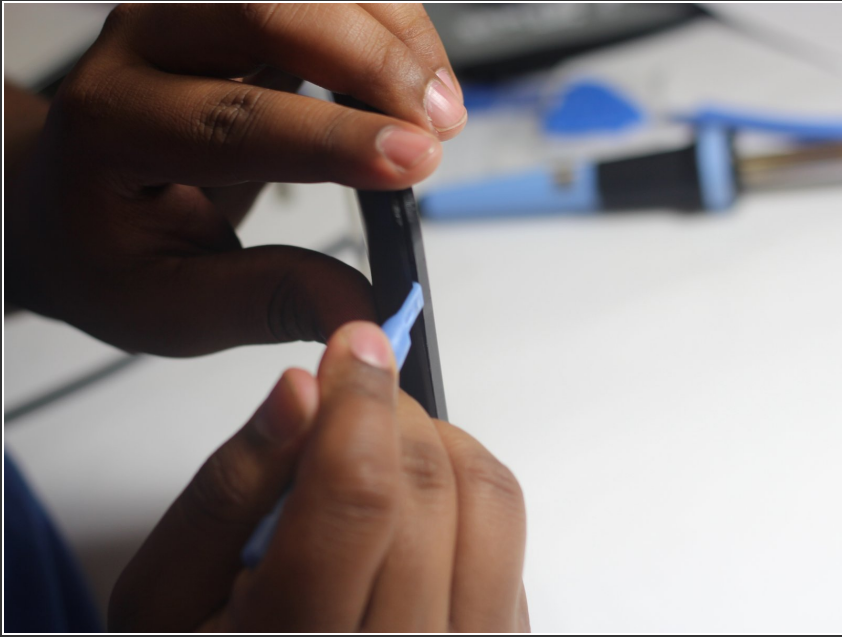
In this guide you will remove the back cover of the device and partially remove the motherboard. Disconnect the screen from the motherboard using a soldering iron and replace it with a new screen.

Because this task requires the use of a soldering iron, prior experience with soldering/desoldering will be beneficial.

TOOLS:

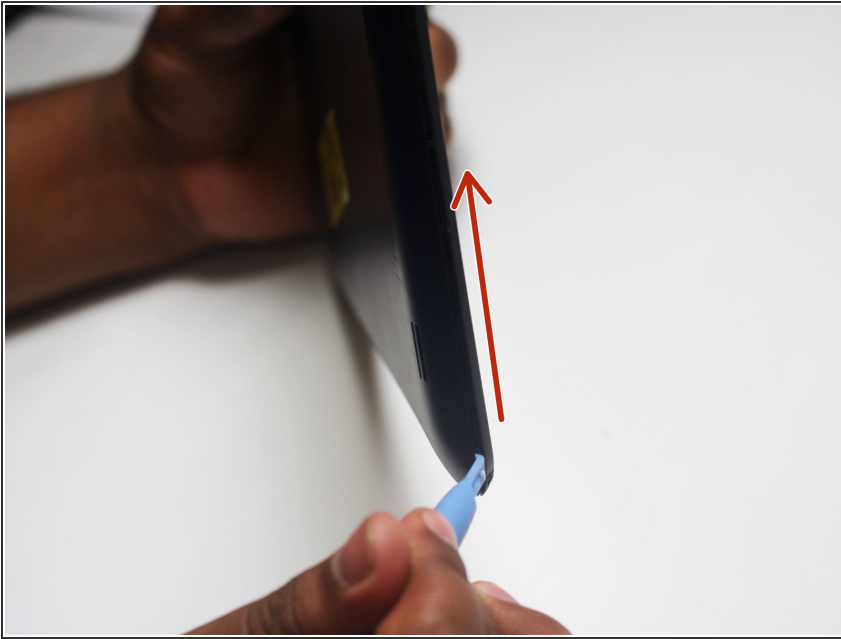
- [iOpener](#) (1)
 - [Phillips #00 Screwdriver](#) (1)
 - [iFixit Opening Tools](#) (1)
 - [Spudger](#) (1)
 - [Tweezers](#) (1)
 - [Safety Glasses](#) (1)
 - [Soldering Iron](#) (1)
-

Step 1 — Back Cover



- Wedge the plastic opening tool between the back cover of the device and the front panel.
- You will hear a *snapping* sound as the cover is separated from the body of the device.

Step 2



- Slide the opening tool along the seam between the front panel and the back cover to un-clip the remaining connections around the device.
- Again, you will hear a *snapping* sound as the cover is separated from the body of the device.

Step 3



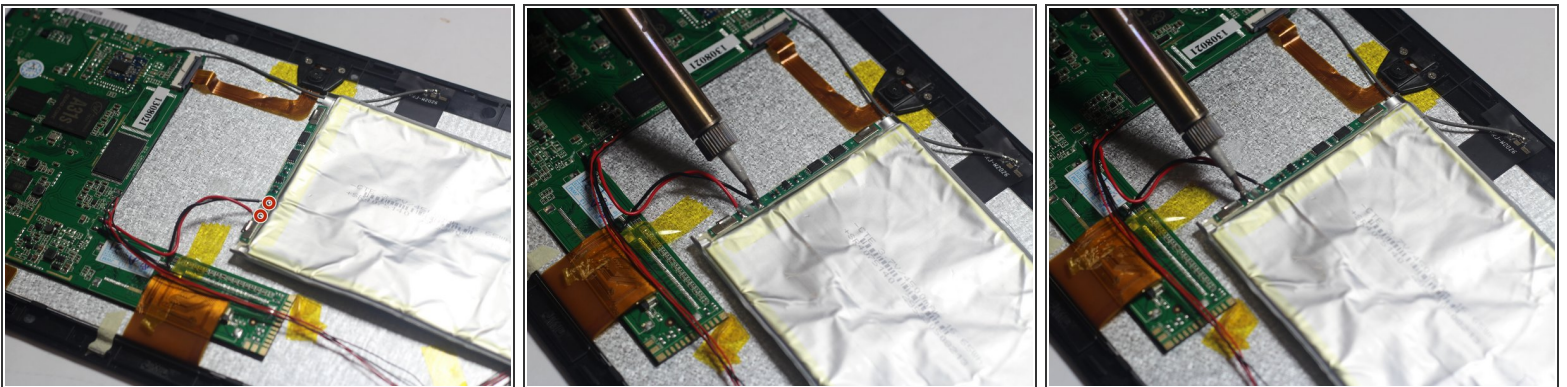
- Lift the back cover from the body of the device to expose the internal components.

Step 4 — Battery



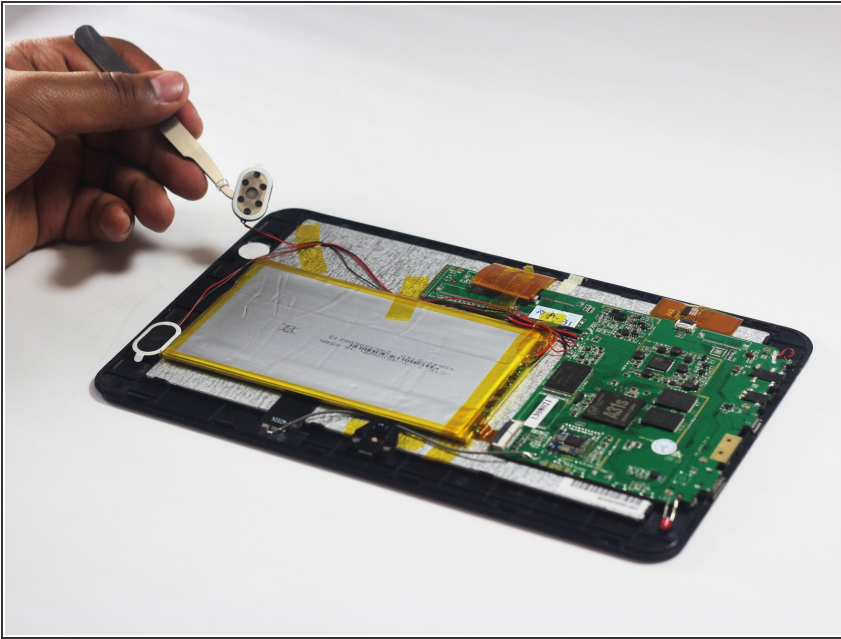
- Remove the Battery
 - The battery is secured to the back panel with tape and glue.
 - Peel back the tape around the battery and discard it.
 - Tear through the adhesive holding the battery by using the spudger tool.

Step 5



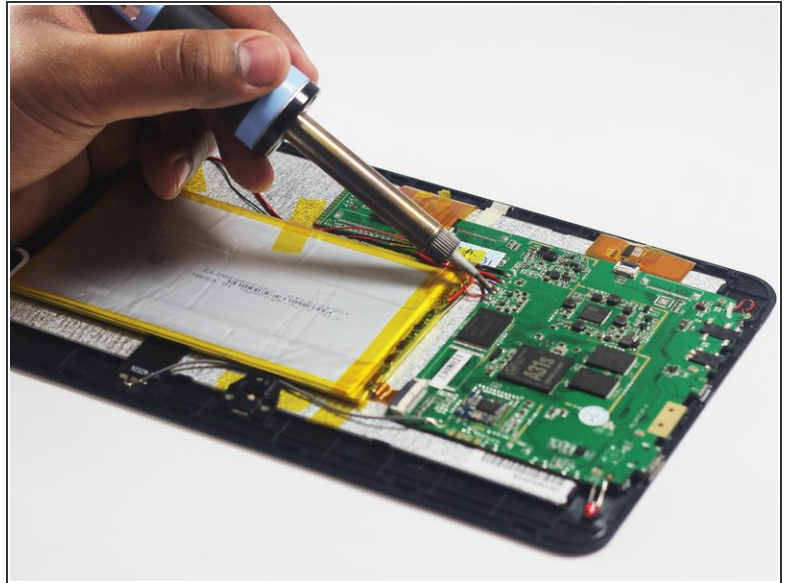
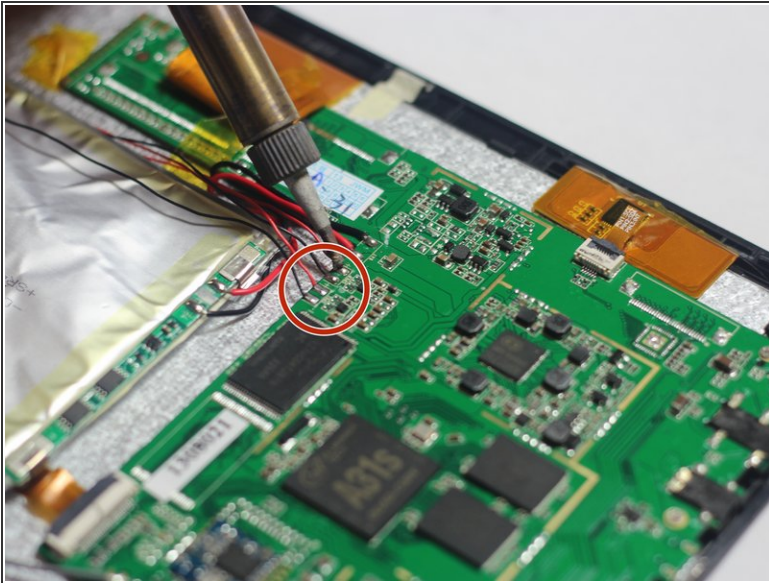
- Desolder the 2 Battery Wires
 - The Battery has two wires connected to the motherboard (one black and one red).
 - ☞ If you're unfamiliar with soldering or desoldering check out [this guide](#).
 - ⚠ Be sure to wear protective eye wear. The soldering iron will become extremely hot and a potential danger, so make sure you are aware of your surroundings.

Step 6 — Speaker



- Remove the Speakers
- Use the tweezers to remove the speakers from their compartments.

Step 7



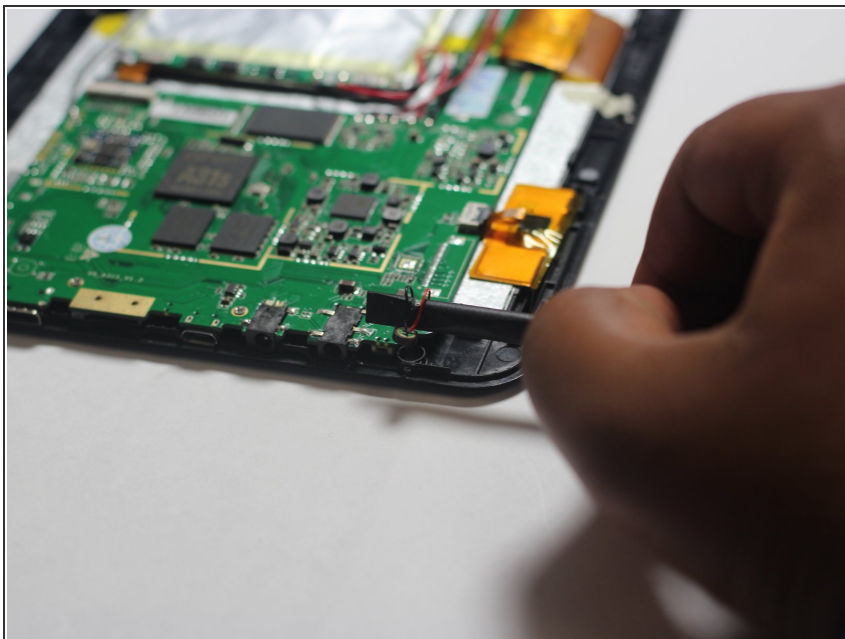
- Desolder the 4 Speaker Wires

- ❗ These wires connect the speakers to the motherboard. They are the thinnest wires.

- 🔧 If you're unfamiliar with soldering or desoldering check out [this guide](#).

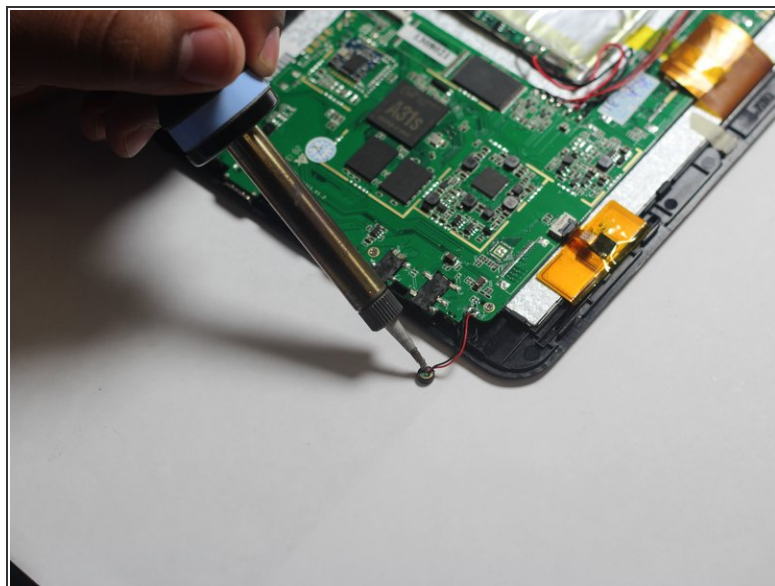
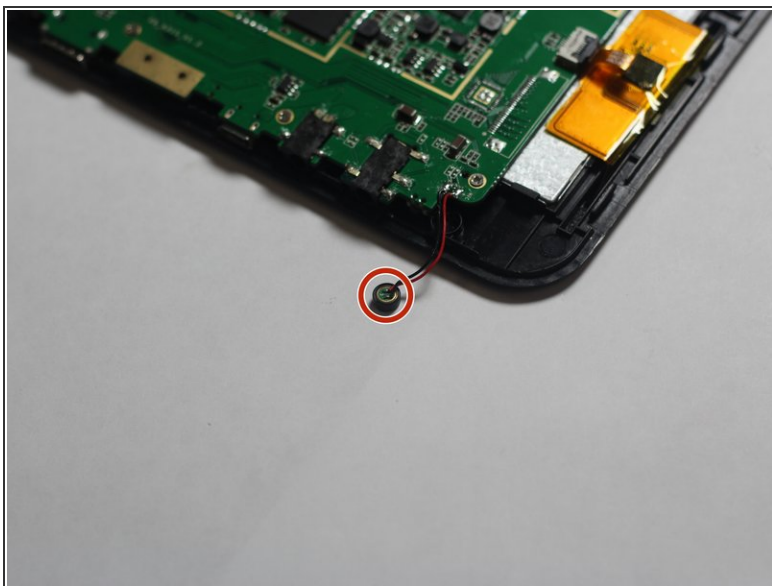
- ⚠ Be sure to wear protective eye wear. Also, keep in mind that the soldering iron will become extremely hot.

Step 8 — Microphone



- Remove the microphone from its compartment.
- ⓘ The microphone is located toward the bottom left corner of the device (assuming the speakers are located on the right side of you).

Step 9

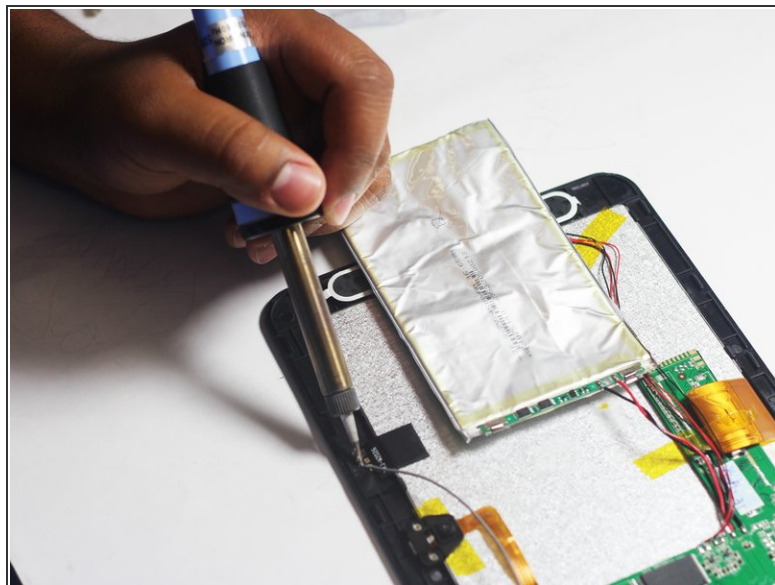
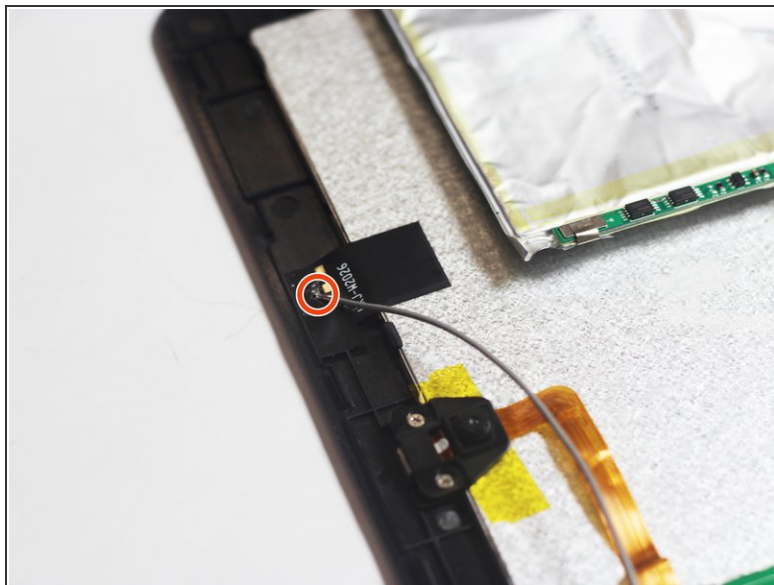


- Use the soldering iron to remove the wires connected to the microphone.

✦ If you're unfamiliar with soldering or desoldering, check out [this guide](#).

⚠ Be sure to wear protective eye wear. Also, keep in mind that the soldering iron will become extremely hot.

Step 10 — FM Antenna

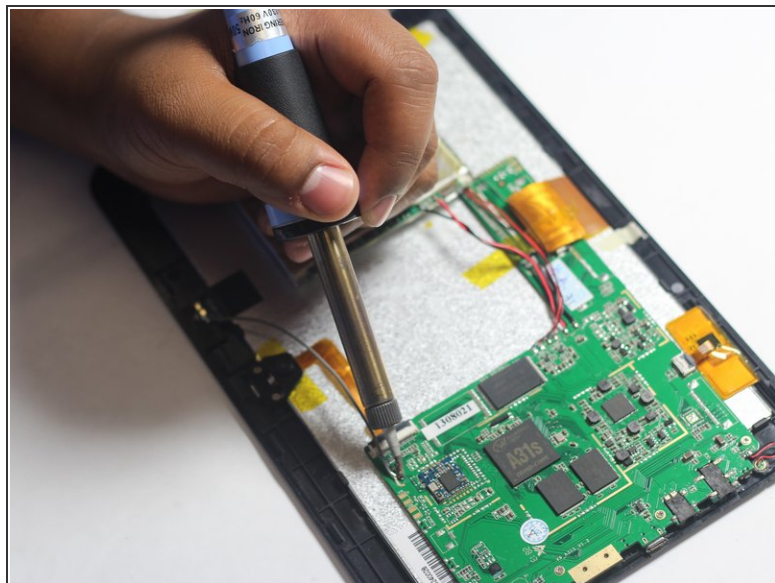
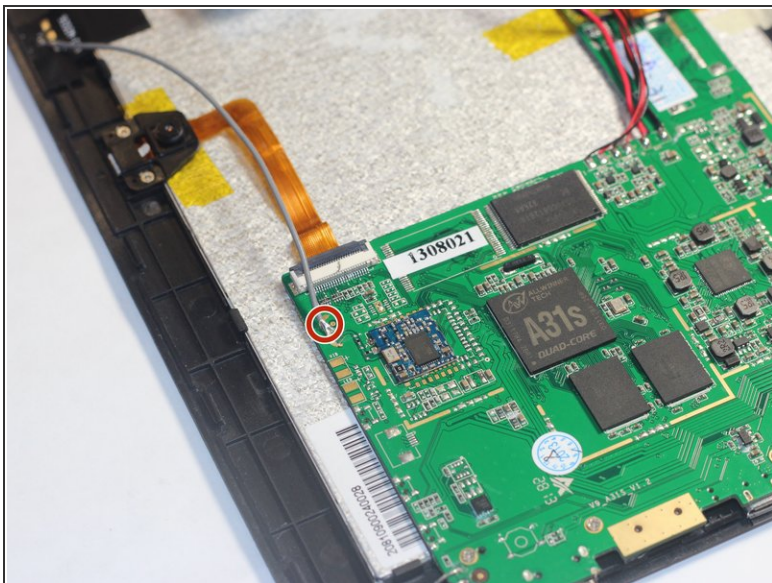


- Use a soldering iron to desolder the region circled in red.

✦ If you're unfamiliar with soldering or desoldering check out [this guide](#).

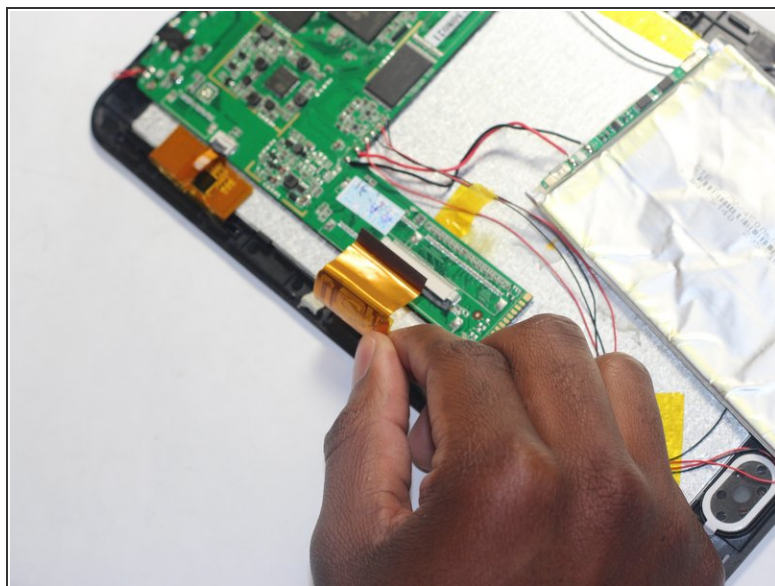
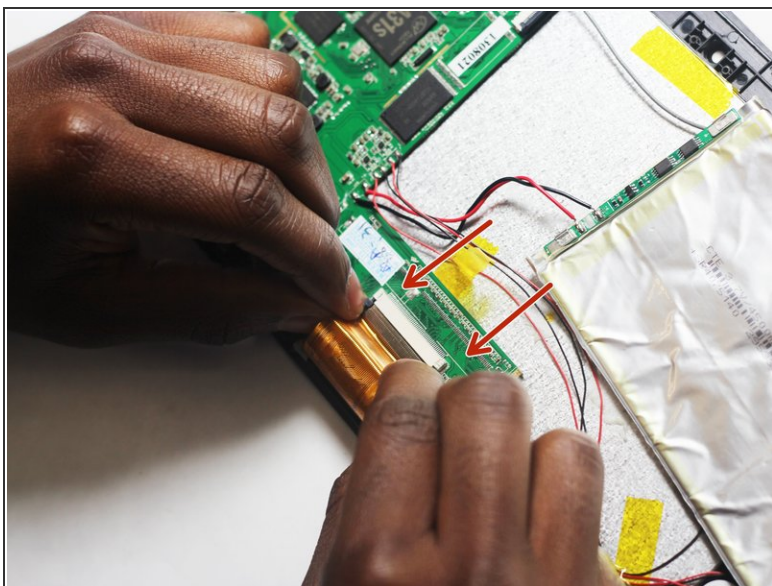
⚠ Be sure to wear protective eye wear. The soldering iron will become extremely hot and a potential danger, so be aware of your surroundings.

Step 11



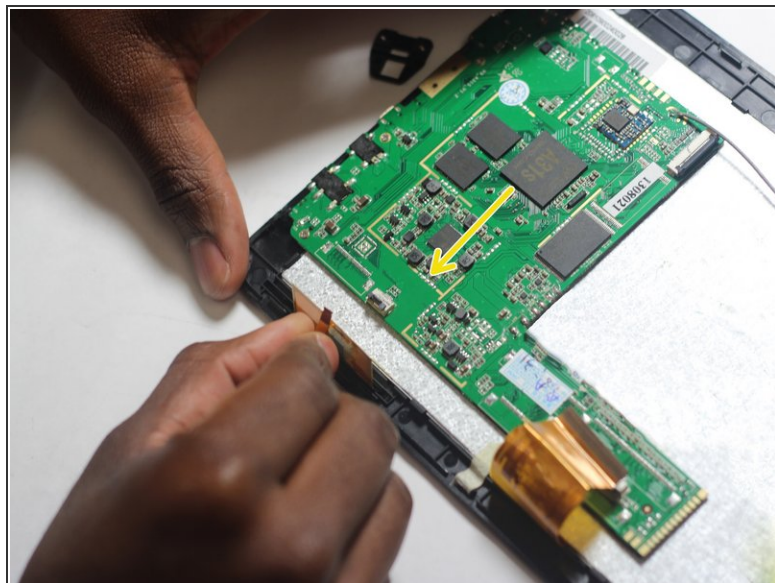
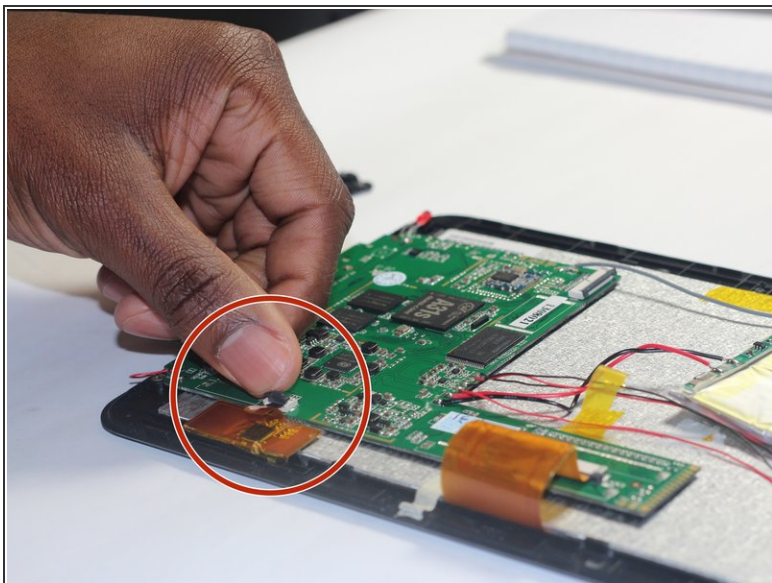
- Desolder the FM antenna from the motherboard.

Step 12 — Motherboard



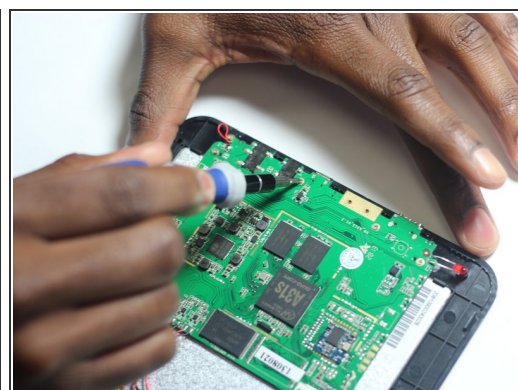
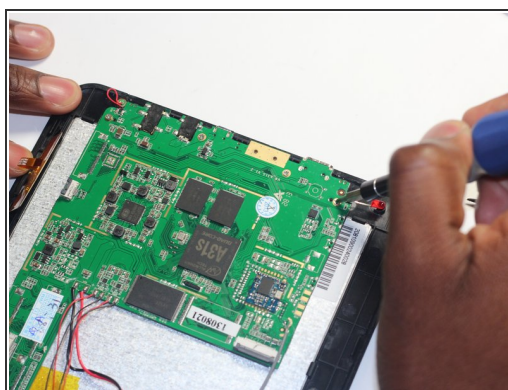
- Remove the large ribbon cable from the socket that attaches it to the motherboard.
- Pull down on the dark grey sliders located on both sides of the ribbon cable to release it.

Step 13



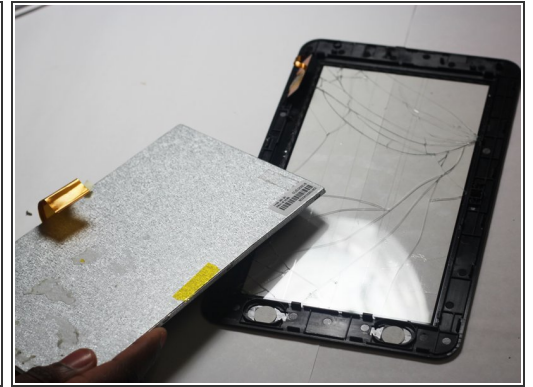
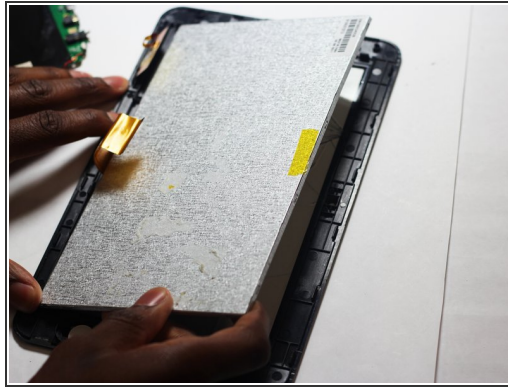
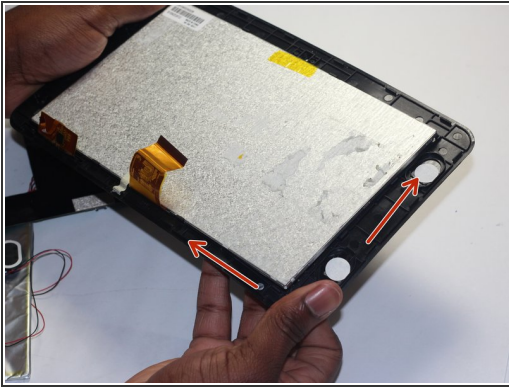
- Remove the small ribbon cable from the socket that attaches it to the motherboard.
- Flip the dark grey latch to release the ribbon cable from the motherboard.

Step 14



- Remove the four Phillips #00 screws attaching the motherboard to the device.

Step 15 — LCD



- Ensure that the motherboard and all other items are off before continuing.
- Separate the screen and back housing by gently pulling on it.

To reassemble your device, follow these instructions in reverse order.