



# Samsung PL200 Lens Replacement

This guide allows you to replace the lens on...

Written By: Weston Tracey



# INTRODUCTION

This guide allows you to replace the lens on your Samsung PL200 camera. To complete this guide you will need a #000 Phillips Screwdriver, a Plastic Opening Tool, and a set of Tweezers.

---

## TOOLS:

[Phillips #000 Screwdriver](#) (1)

[iFixit Opening Tool](#) (1)

[Tweezers](#) (1)

---

## Step 1 — Battery



- Flip Samsung PL200 over to access battery/SD card compartment on the bottom. There is a sliding release button (labeled 'OPEN') that can be slid sideways to open the battery/SD card compartment.
- Slide this button in the direction that the arrow is pointing to release and open the spring loaded battery/SD card compartment door. Once opened, the battery should be visible.

## Step 2



- Once the battery/SD card compartment is opened, in order to remove the battery, you must push the small blue release button.
- This will release the spring loaded battery.
- Use your fingers to remove the old battery.

## Step 3



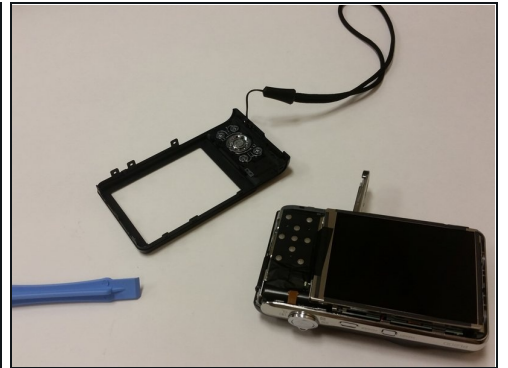
- Insert the new battery into the battery slot.
- Push it down with your finger until the blue release switch re-engages over top of the battery.
- Close the battery/SD card compartment.

## Step 4 — LCD Screen



- Remove the six 3 mm external screws from the camera base using the Phillips #000 screwdriver.

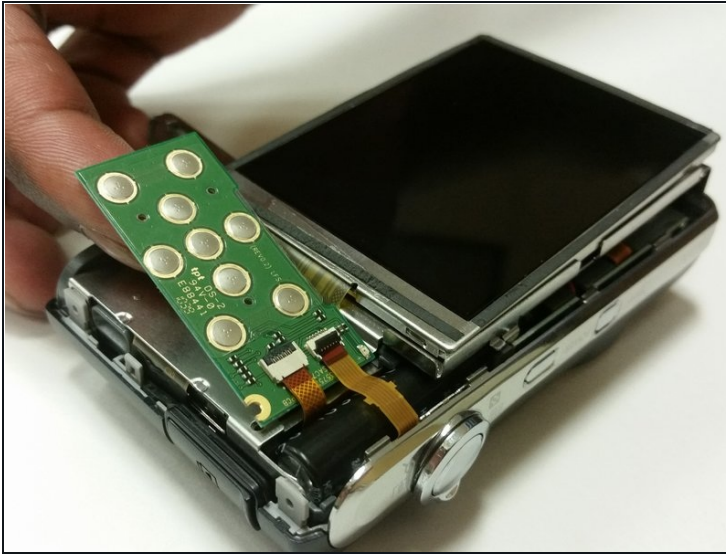
## Step 5



- Use the plastic opening tools and your fingers to pull the external cover off.

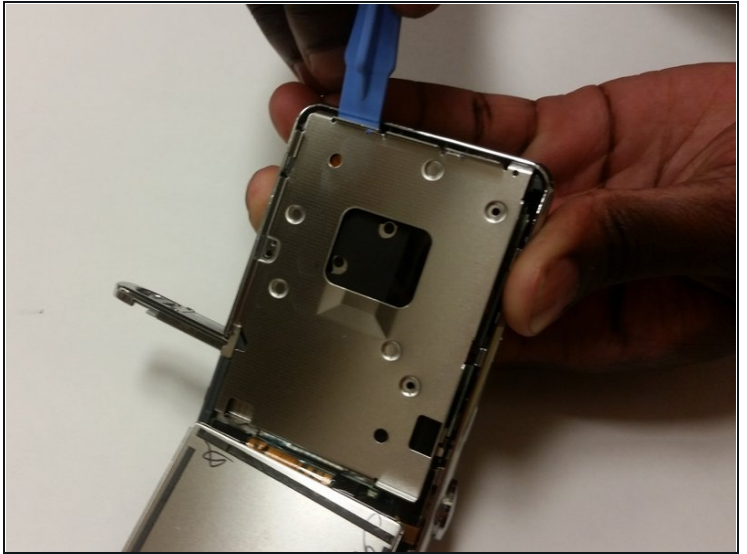


## Step 6



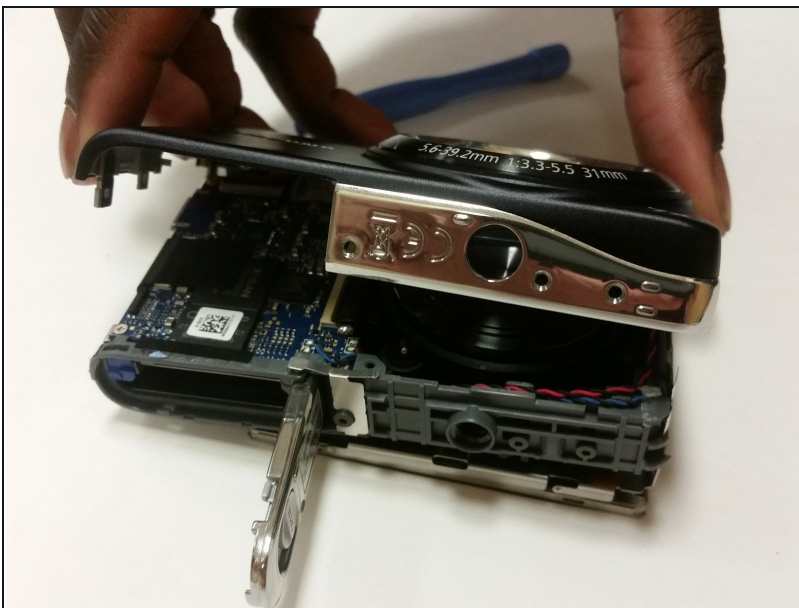
- Remove the 3 mm screw holding the circuit board.
- Use a pair of tweezers to detach the two ribbon cables connecting the circuit board to the camera.
- Remove the circuit board.

## Step 7



- Flip the LCD screen forward and remove the two 3 mm screws holding the metal midframe using a Phillips #000 screwdriver.
- Remove the midframe using an opening tool.

## Step 8



- Remove the front cover. It will come off fairly easily.

## Step 9



- Lift the black strip and the ribbon will easily come out.
- After doing this, the LCD screen will be separated from the camera.

## Step 10 — SD card



- Flip Samsung PL200 over to access battery/SD card compartment on the bottom. There is a sliding release button (labeled 'OPEN') that can be slid sideways to open the battery/SD card compartment.
- Slide this button in the direction that the arrow is pointing to release and open the spring loaded battery/sd compartment door.
- Once opened, the SD card should be visible.



## Step 11



- Once the battery/SD card compartment is opened, simply push the SD card down to activate the spring loaded ejector.
- This will cause the SD card to raise up enough to allow you to grab it with your fingers.
- Use your fingers to remove the old SD card.

## Step 12



- Insert the new SD card into the SD card slot.
- Make sure to push it down all the way until it clicks and remains flush with battery.
- Close the battery/SD card compartment.

## Step 13 — Lens



- Remove the two black 3 mm screws from the right side of the camera using a Phillips #000 screwdriver.
- Remove the five silver 3 mm screws from the camera's side and bottom using a Phillips #000 screwdriver.

## Step 14



- Use a plastic opening tool and your fingers to pry off the external cover.

## Step 15



- Remove the single 3 mm screw securing the circuit board with a Phillips #000 screwdriver.
- Remove any leftover tape on the circuit board and screen.
- Unplug and remove the wires from the circuit board using a set of tweezers.

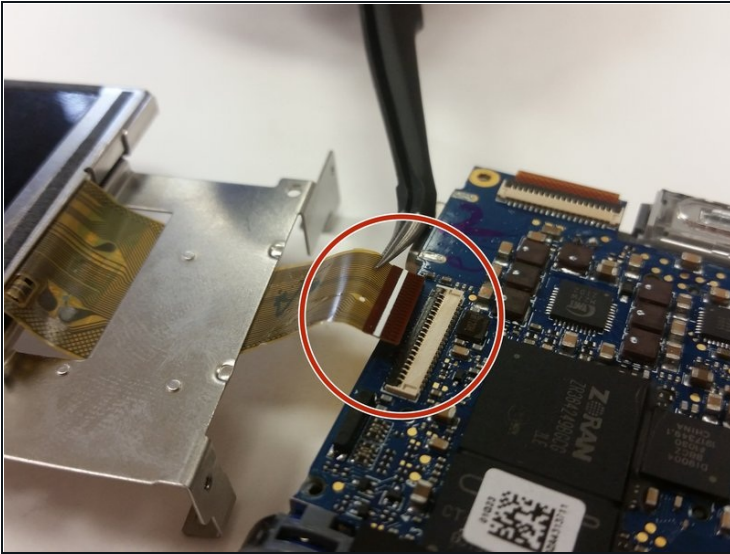
## Step 16



- Flip the LCD screen forward and out to the side.
- Use a Phillips #000 screwdriver to remove the two 3 mm screws beneath the LCD screen.
- Remove the metal brace using the Plastic Opening Tool.



## Step 17



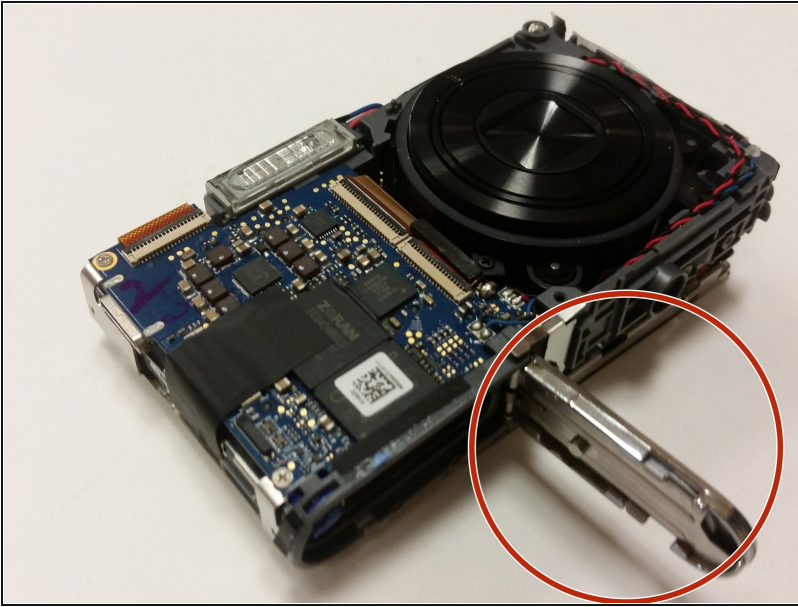
- Flip the ZIF connector's locking bar vertically, then gently remove the ribbon cable.
- Remove the screen.

## Step 18



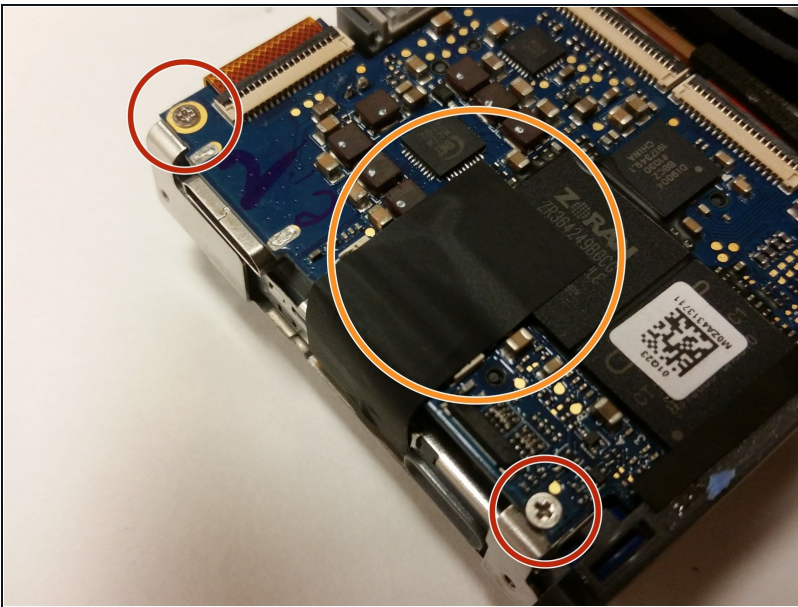
- Remove the front cover of the camera using your fingers and a plastic opening tool.

## Step 19



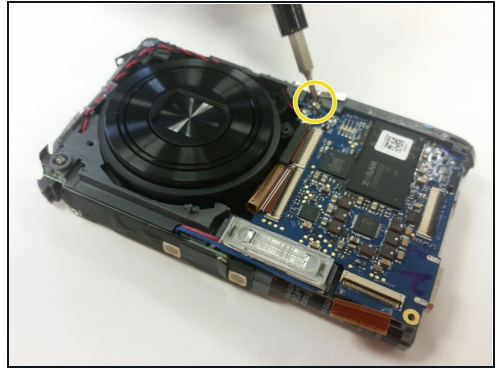
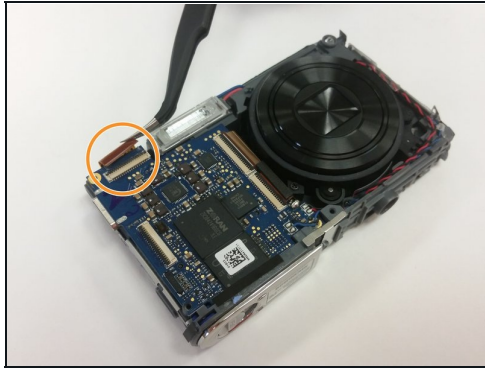
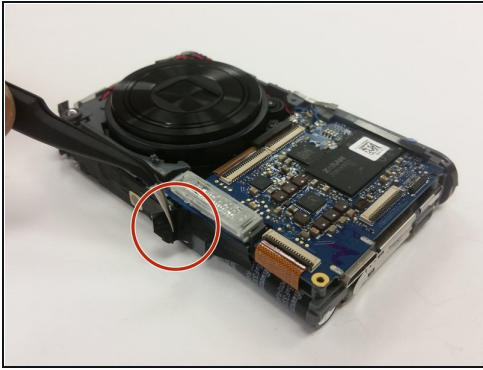
- Set the screen and metal brace aside.
- Open the camera's battery compartment on the bottom part of the camera.

## Step 20



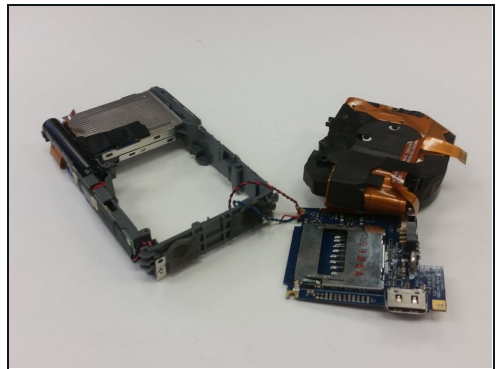
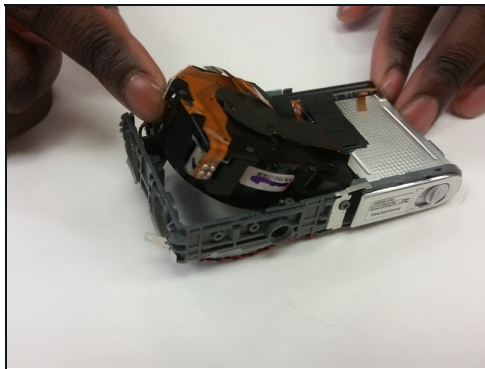
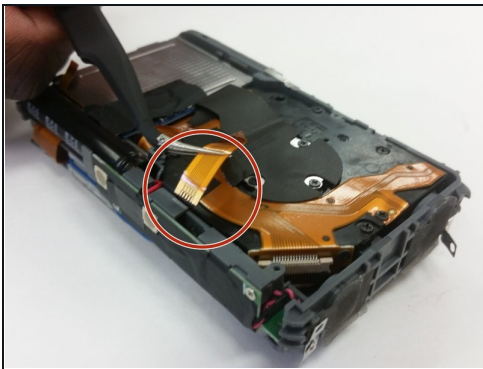
- Remove the two 3 mm corner screws that secure the motherboard, with a Phillips #000 screwdriver.
- Remove any leftover tape that may still be on the motherboard.

## Step 21



- Use tweezers to remove the tape from the bottom of the camera.
- Then use the tweezers to disconnect the lens unit cord at the bottom of the camera from the motherboard.
- Remove the last 3 mm screw securing the motherboard with a Phillips #00 screwdriver.

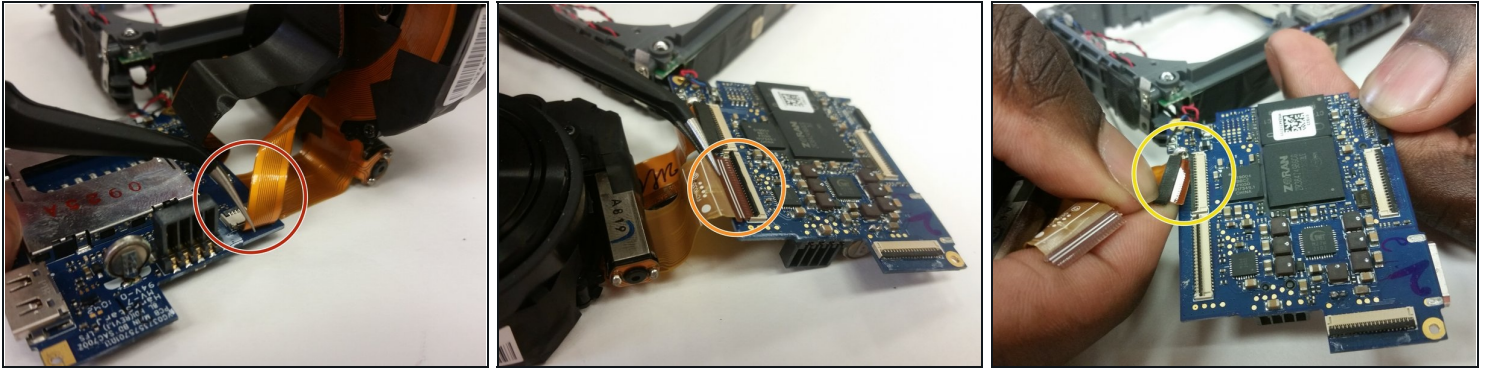
## Step 22



- Use tweezers to unplug the small lens unit cord from the camera frame on the backside of the camera.
- Gently lift the lens unit from the frame.
- Separate the lens unit, motherboard, and camera.



## Step 23



- Use tweezers to disconnect the small ribbon cable from the motherboard.
- Then use the tweezers to remove the first large lens unit ribbon cable from the motherboard.
- Finally, use the tweezers to remove the second large lens unit ribbon cable from the motherboard.

## Step 24



- You have now separated the lens unit. Replace it with a functional lens unit at this stage, and reassemble the device.

To reassemble your device, follow these instructions in reverse order.