



# iRULU AX106 Disassembly

Disassembly guide on how to open an iRULU AX106 and access to the logic board.

Written By: Andrew Mele



---

# INTRODUCTION

In this disassembly guide the user will learn how to disassemble the iRULU down to the logic board.

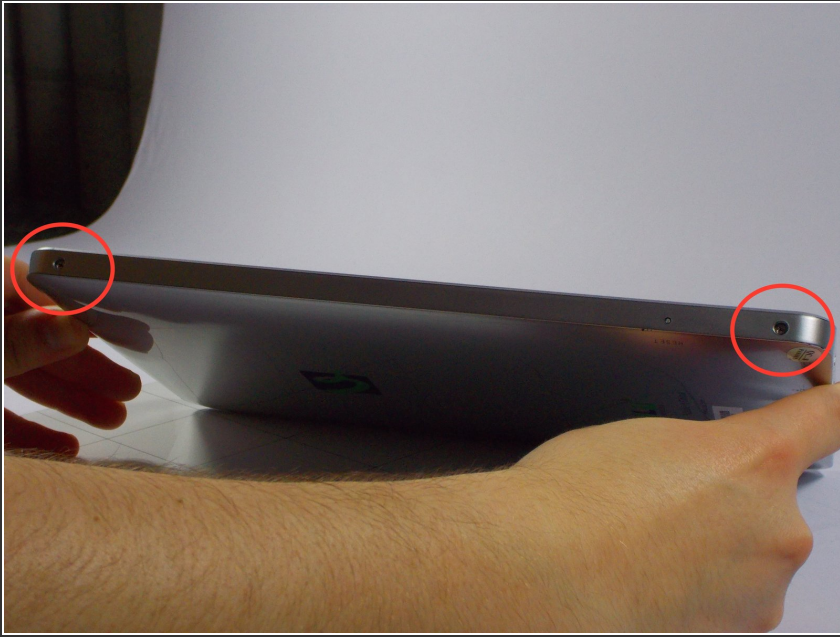
---



## TOOLS:

- [iFixit Opening Tools](#) (1)
  - [Tweezers](#) (1)
-

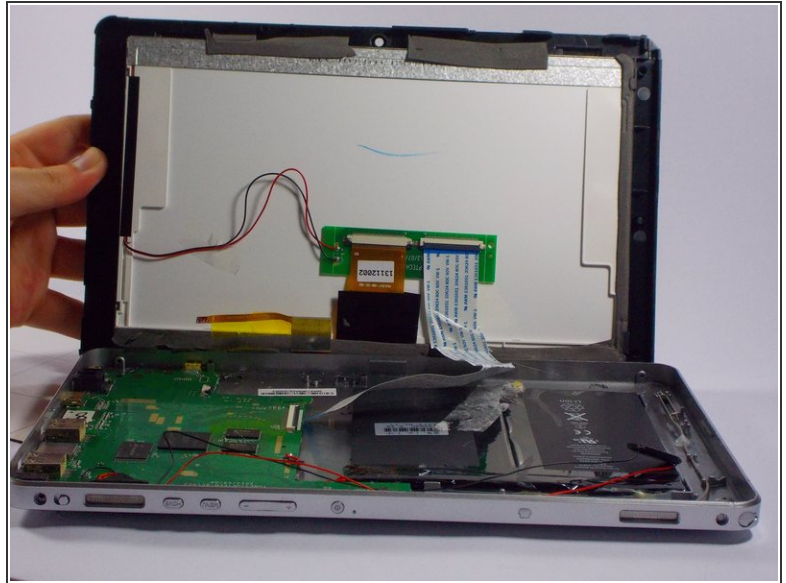
## Step 1 — iRULU AX106 Disassembly



- Using a Philips head #00 screwdriver locate and remove each of the four screws located along the tall side of the iRulu.
- ⓘ There may be plastic covers protecting the screws, if this is the case take a phillips head screwdriver, and gently apply pressure on the covers until they come off.



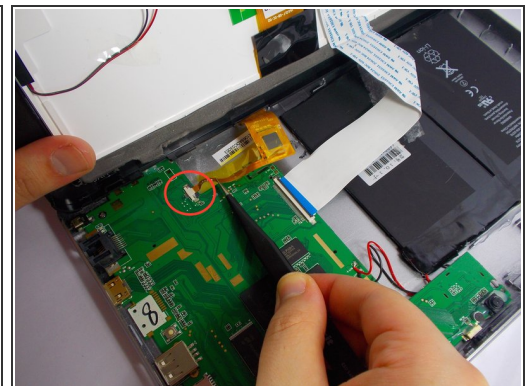
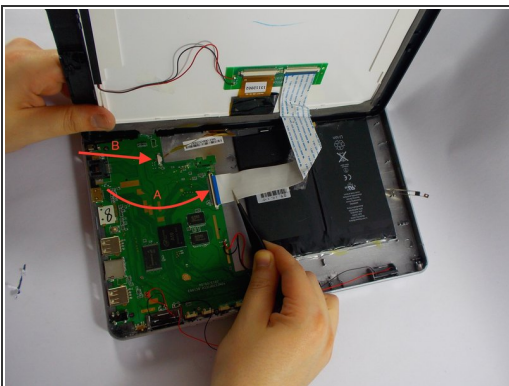
## Step 2



- Use the opening tool to pry the screen from the case applying pressure at each of the four corners of the screen.

⚠ While a good deal of force is required to separate the screen from the case, make sure to separate the screen from the case at each corner before attempting to completely remove the screen. There are delicate wires that may be damaged if the screen is removed is before the corners are separated.

## Step 3



- Using a pair of tweezers, gently unplug connectors A and B from the logic board.
- Completely separate the screen and case.

To reassemble your device, follow these instructions in reverse order.