



Sony Cybershot DSC-T5 SD Card Replacement

This guide the instruct the reader on how to eject and insert the SD card for the Sony Cyber-shot DSC-T5

Written By: Jason Vaccaro

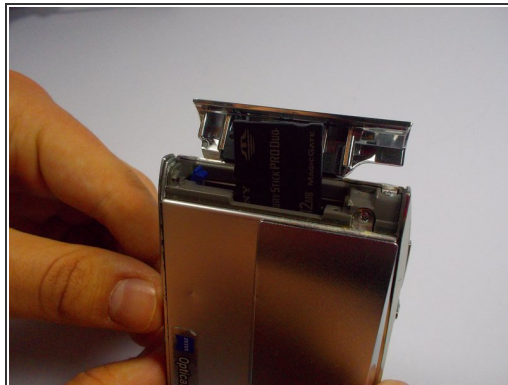
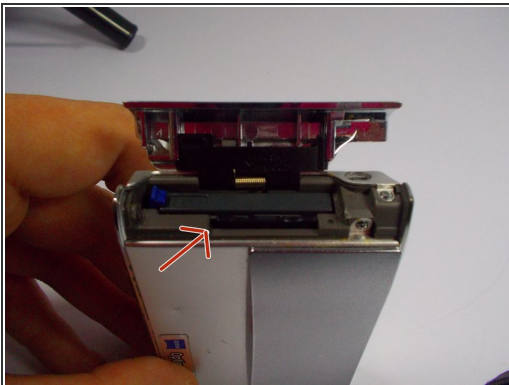


Step 1 — SD Card



- Hold the camera so that the right side of the camera with the panel labeled "Open" is facing up (image 1)
- Push the panel in the direction to indicated (image 2)

Step 2



- The smaller chip near the slider of the camera is the SD card (image 1)
- Push down on the SD card to pop it out, simply push the SD card back into the slot to re-insert it (image 2)

To reassemble your device, follow these instructions in reverse order.

