



Toshiba Satellite C55D-A5201 Key Replacement

This guide teaches you how to replace a broken...

Written By: Andrea Colindres



INTRODUCTION

This guide teaches you how to replace a broken key.

TOOLS:

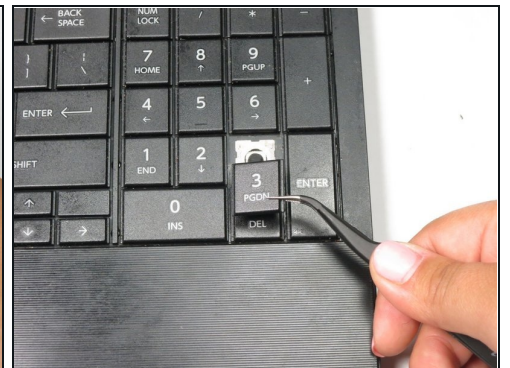
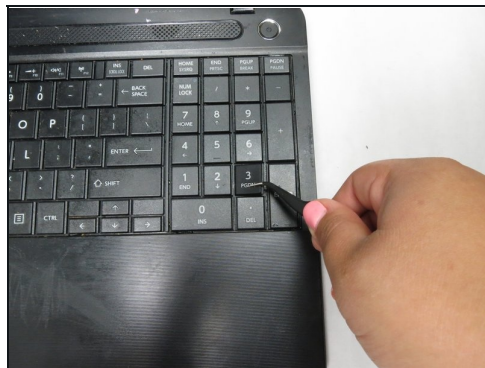
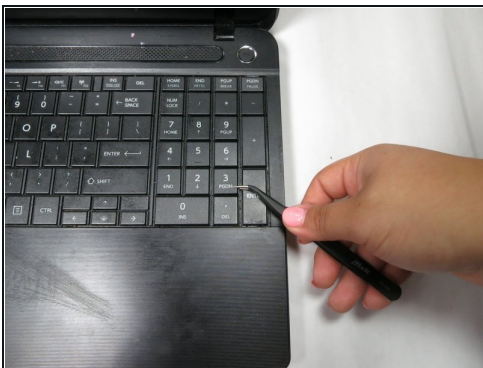
[Tweezers](#) (1)

Step 1 — Key



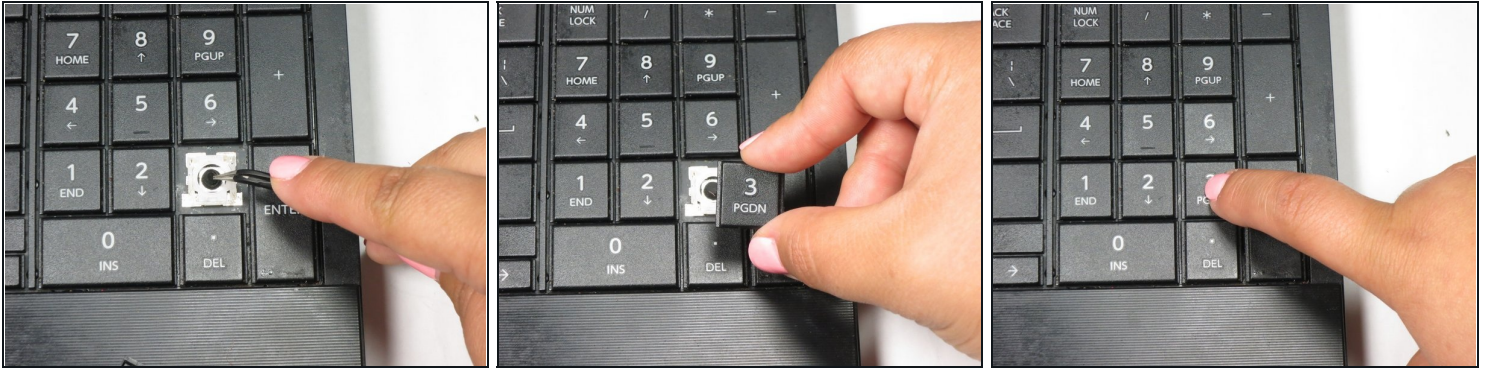
- Turn off the laptop, and keep it open.

Step 2



- With [tweezers](#), grab the broken key by its right side.
- Pull the broken key to the left.

Step 3



- With tweezers, press down on the black key holder until you hear a slight popping sound.
 - With your finger, press the new key onto the holder until it clicks in.
-