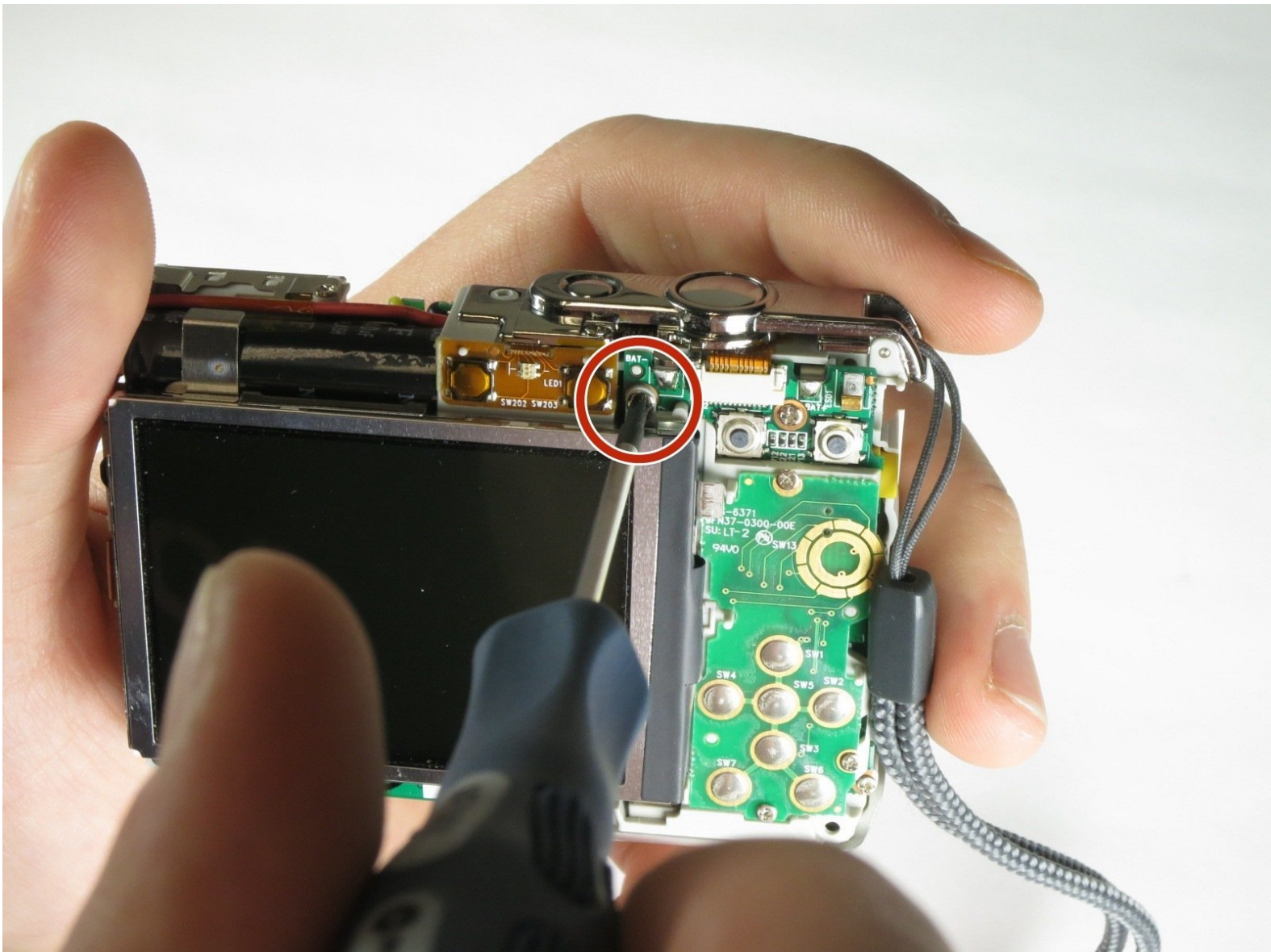




Olympus FE-170 LCD Screen Replacement

This guide will walk you through how to replace the LCD screen on the Olympus FE-170 Camera.

Written By: John Stenson



INTRODUCTION

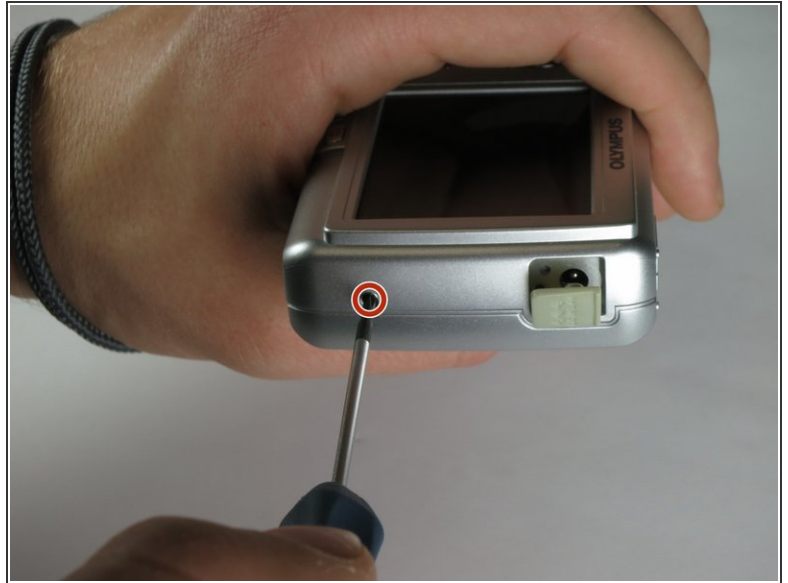
Before removing the LCD screen, you will have to remove the camera casing.



TOOLS:

- [iFixit Opening Tools](#) (1)
 - [Phillips #00 Screwdriver](#) (1)
-

Step 1 — Casing



- Remove the 2 exposed screws on opposite sides of the camera. Turn the screws counter-clockwise to remove.

Step 2



- Open the battery compartment and remove the 2 screws in the top of the opening.

Step 3



- Remove the 2 exposed screws on the bottom of the camera.

Step 4



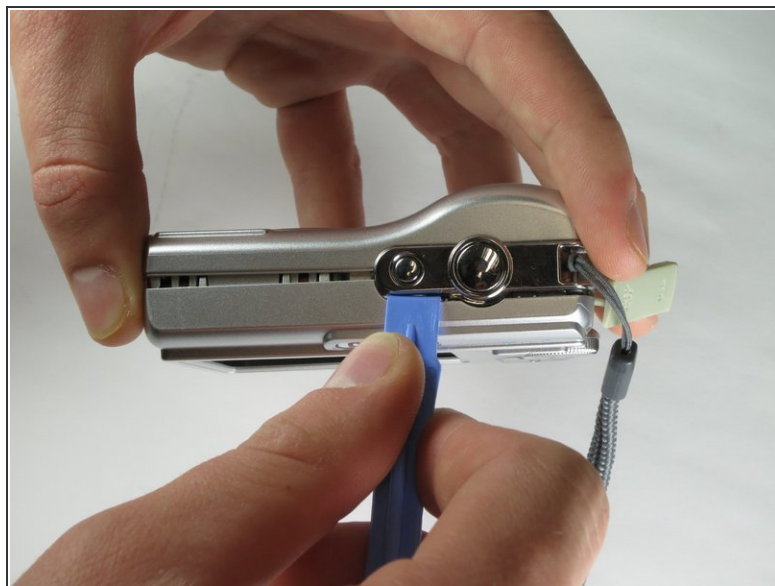
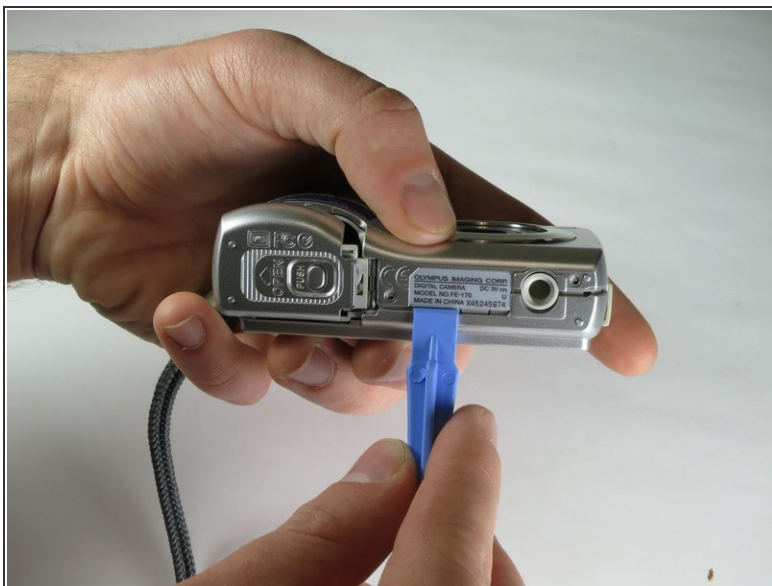
- Uncover the mini-usb dock on the side of the camera and unscrew the screw next to the flap joint

Step 5



- Uncover the video cable port on the side of the camera and remove the screw

Step 6



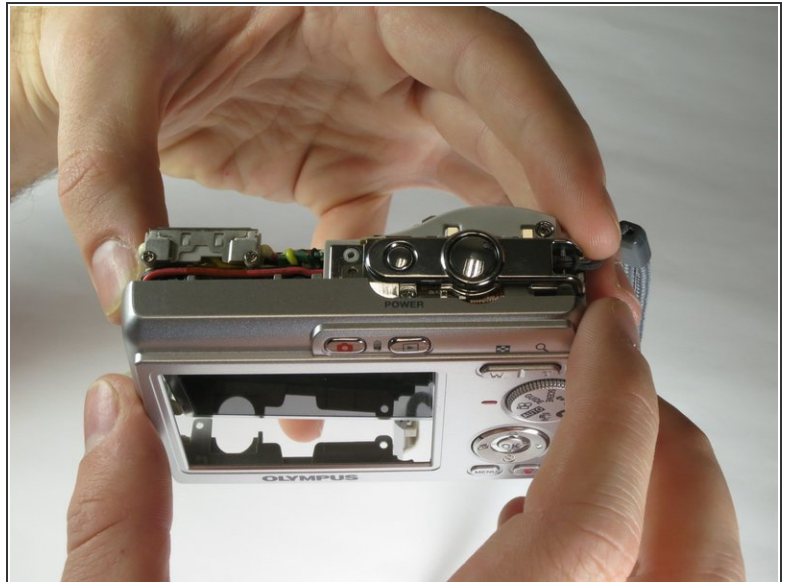
- Carefully slip the head of the plastic opening tool under the panels by finding the crack between the panels. Lightly apply pressure in the shown places at the top and bottom of the camera.

Step 7



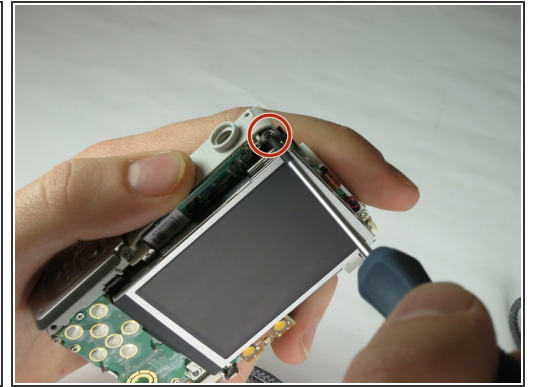
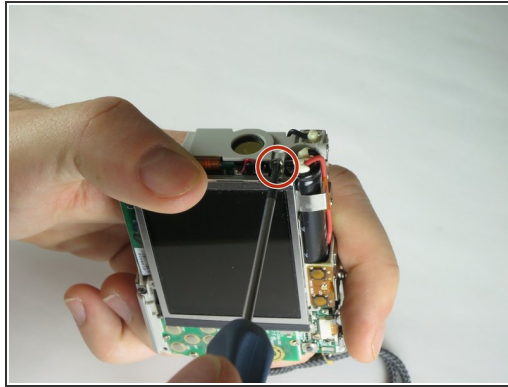
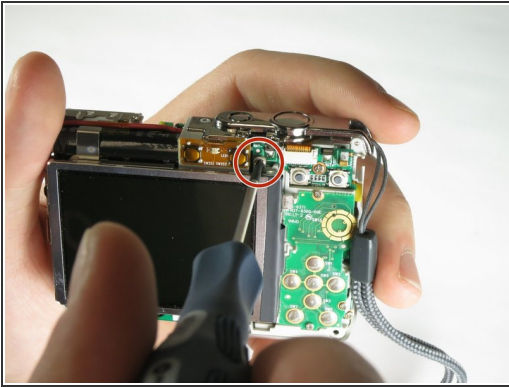
- Loosen the panels on the sides of the camera in the shown places by slipping the plastic opening tool in the crack between the panels. Lightly apply pressure.

Step 8



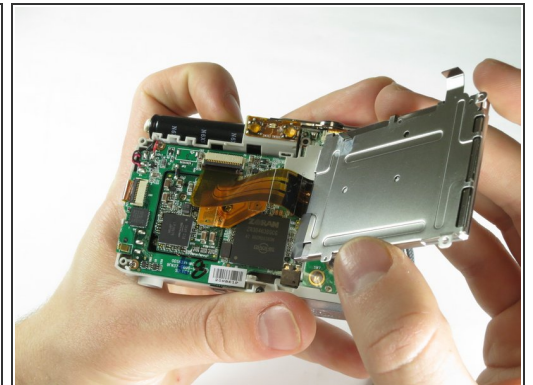
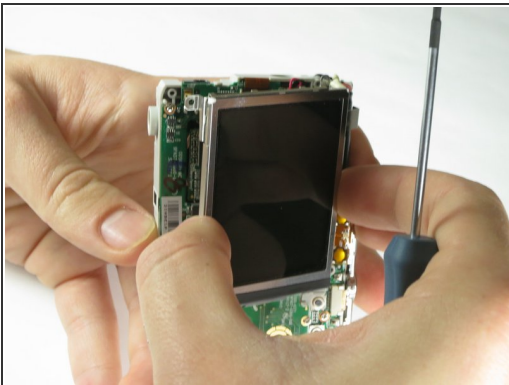
- Ensure that the panels have been loosened. Carefully use hands to pull back and remove the panels.

Step 9 — LCD Screen



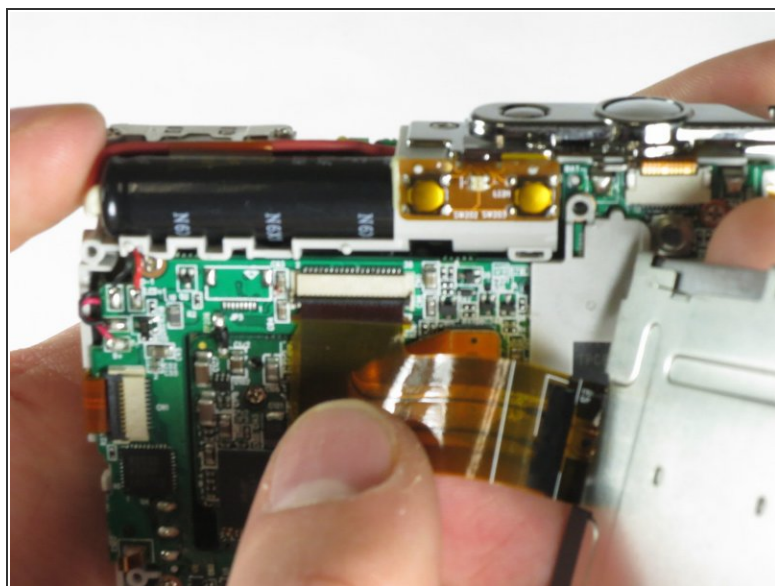
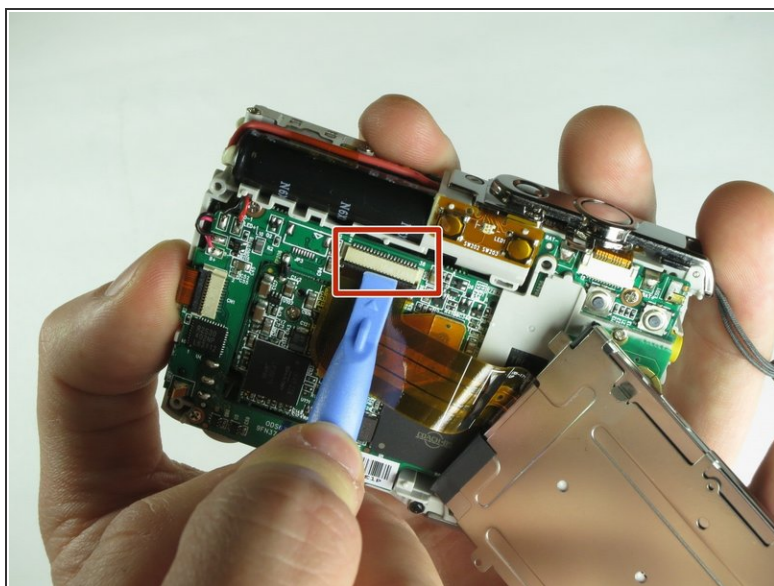
- Remove the three screws holding the LCD Screen in place.
 - ❗ The screws are located at the upper right, upper left, and lower left corners of the screen, as shown in the pictures.
- ⚠ After removing the screws, do not let the screen drop away or try to pull it out. It is still connected by a ribbon of wires.

Step 10



- Carefully lift the LCD screen away
- ⚠ Don't pull away. The ribbon will still be connected to the camera.

Step 11



- Using a plastic opening tool, lift the latch on the ribbon connector.
 - Insert the plastic opening tool beneath the latch, and gently pull up.
 - Carefully pull the ribbon out, and lift the LCD screen out and away.

To reassemble your device, follow these instructions in reverse order.