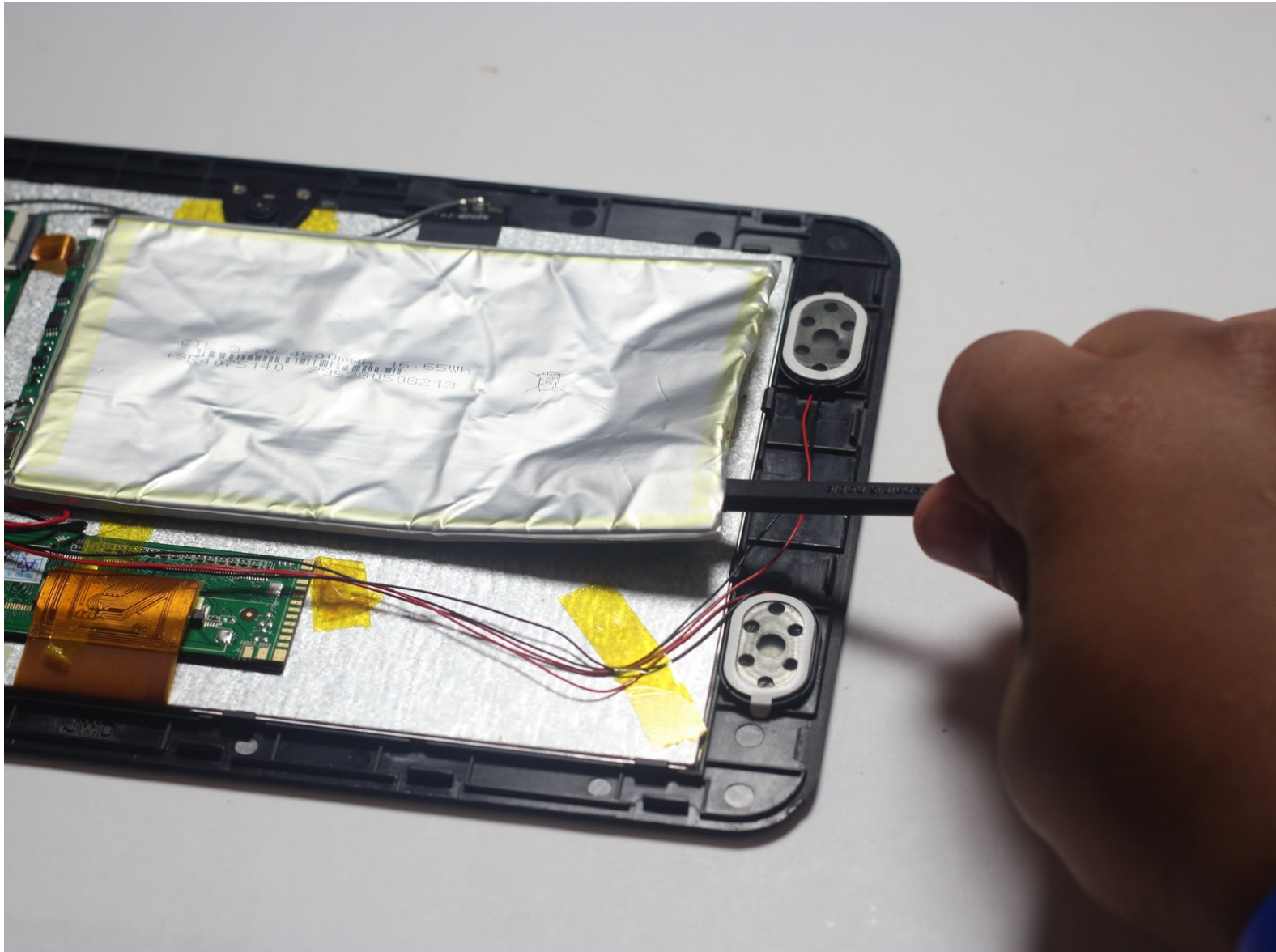




SuperSonic Matrix Mid SC-999 Battery Replacement

This guide will show you how to replace the rechargeable lithium ion battery.

Written By: Collin Ferguson



INTRODUCTION

In this guide you will be required to take off the back cover of the device in order to locate and remove the battery. You will need to use a soldering iron to accomplish this task.

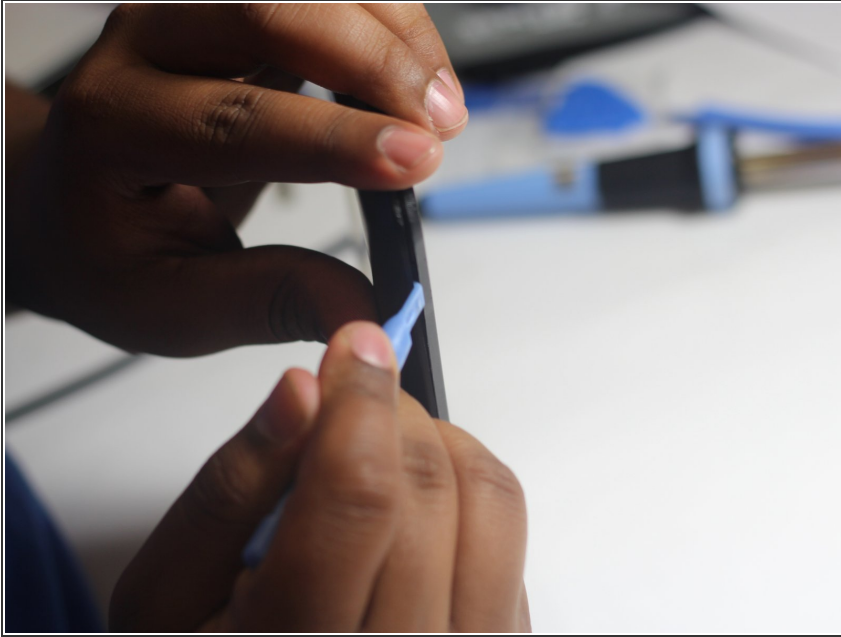
Because this task requires the use of a soldering iron, prior experience with soldering/desoldering will be beneficial.



TOOLS:

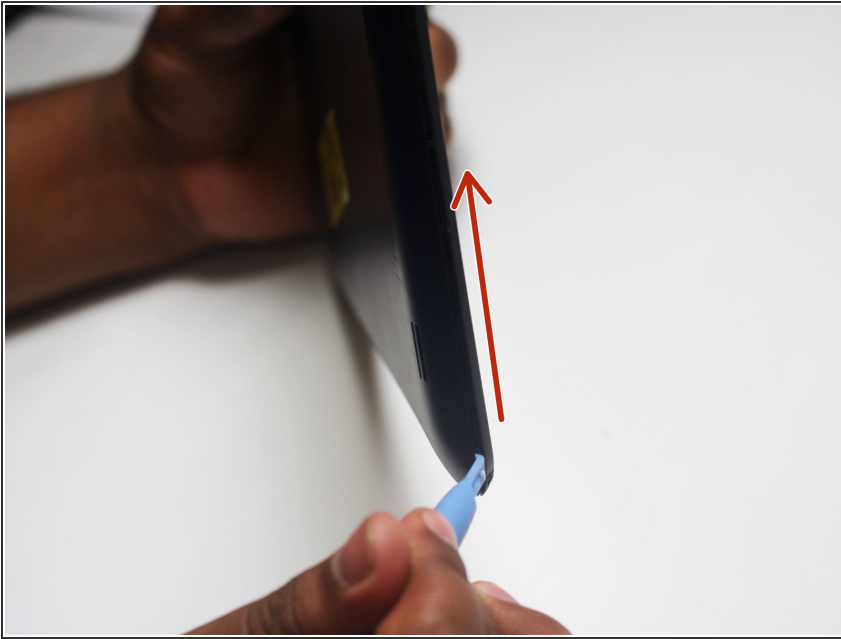
- [iFixit Opening Tools](#) (1)
 - [Spudger](#) (1)
 - [iOpener](#) (1)
 - [Safety Glasses](#) (1)
 - [Soldering Iron](#) (1)
-

Step 1 — Back Cover



- Wedge the plastic opening tool between the back cover of the device and the front panel.
- You will hear a *snapping* sound as the cover is separated from the body of the device.

Step 2



- Slide the opening tool along the seam between the front panel and the back cover to un-clip the remaining connections around the device.
- Again, you will hear a *snapping* sound as the cover is separated from the body of the device.

Step 3



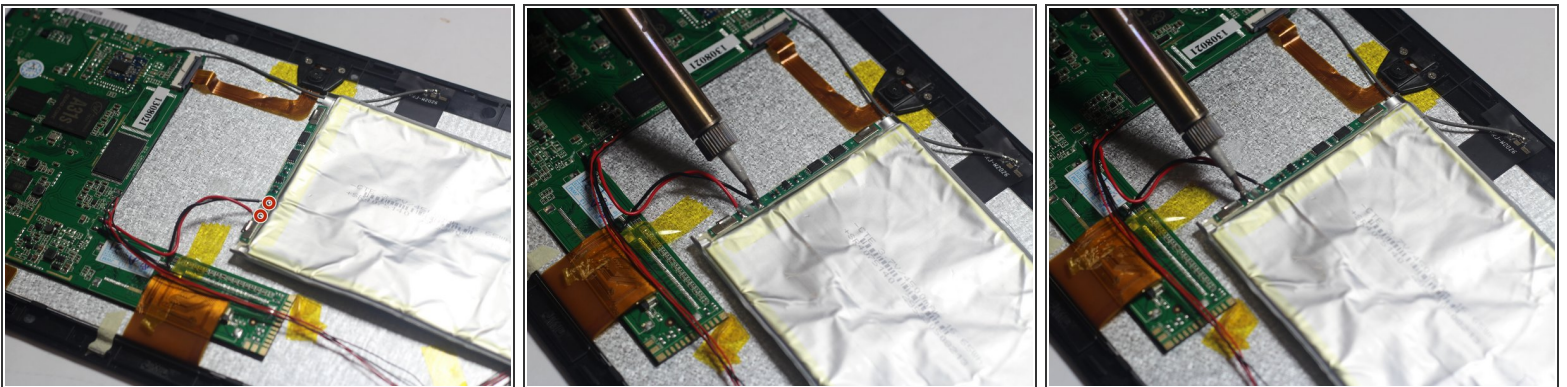
- Lift the back cover from the body of the device to expose the internal components.

Step 4 — Battery



- Remove the Battery
 - The battery is secured to the back panel with tape and glue.
 - Peel back the tape around the battery and discard it.
 - Tear through the adhesive holding the battery by using the spudger tool.

Step 5



- Desolder the 2 Battery Wires
 - The Battery has two wires connected to the motherboard (one black and one red).
 - ☞ If you're unfamiliar with soldering or desoldering check out [this guide](#).
 - ⚠ Be sure to wear protective eye wear. The soldering iron will become extremely hot and a potential danger, so make sure you are aware of your surroundings.

To reassemble your device, follow these instructions in reverse order.