



RCA RCT6378W2 Battery Replacement

In this guide you will learn how to remove and replace the battery in your RCA RCT6378W2 tablet.

Written By: Justin



INTRODUCTION

If you notice your battery life deteriorate, or you notice a bulge in the back of the device, it is time to replace the battery. In this guide, you will be removing the following parts:

1. Back Cover
2. Battery

Use this guide to replace the battery of your RCA RCT6378W2.

Remove your memory card before beginning this procedure to protect it from any damage.



TOOLS:

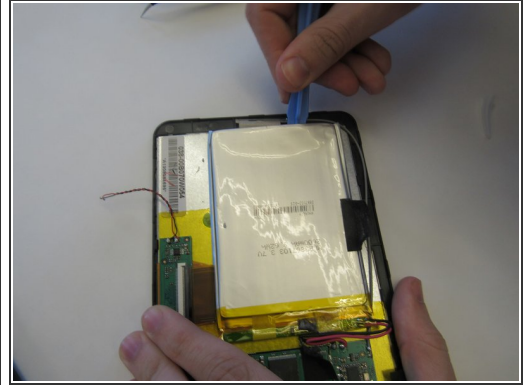
- [iFixit Opening Tools](#) (1)
- [Spudger](#) (1)
- [Phillips #00 Screwdriver](#) (1)
- [Tweezers](#) (1)
- [Solder](#) (1)
- [Soldering Iron](#) (1)



PARTS:

- [RCA RCT6378W2 battery](#) (1)

Step 1 — Battery



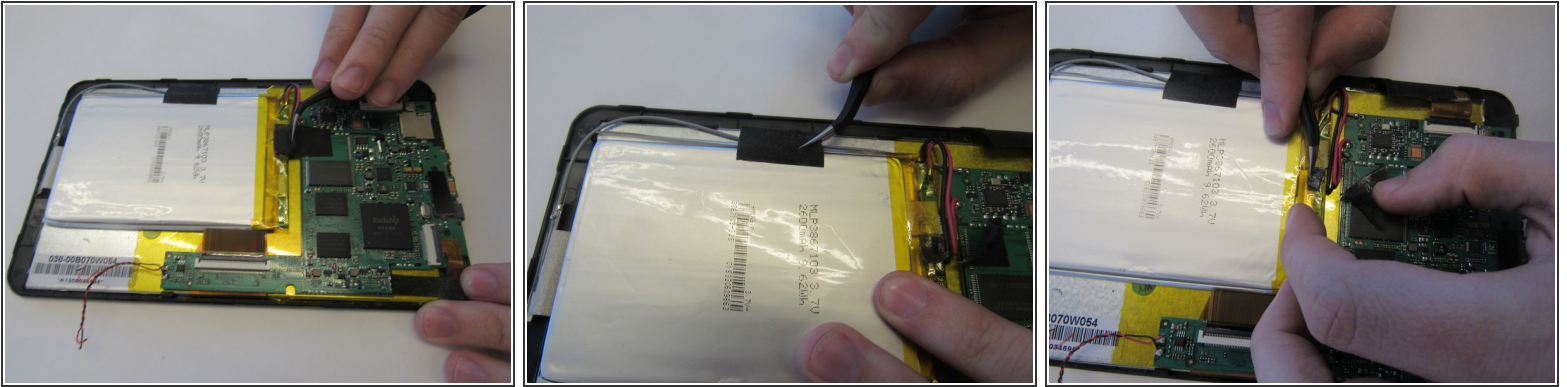
- Remove the two 2.4 mm x 4 mm Phillips #00 screws from the bottom of the tablet.

Step 2



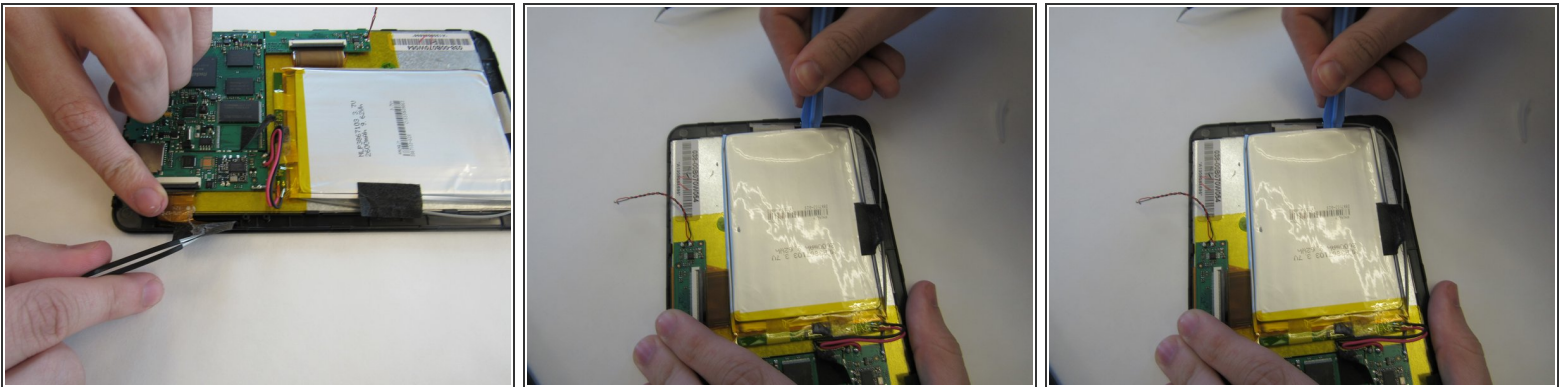
- Remove the back cover with a plastic opening tool, exposing the battery and motherboard.

Step 3



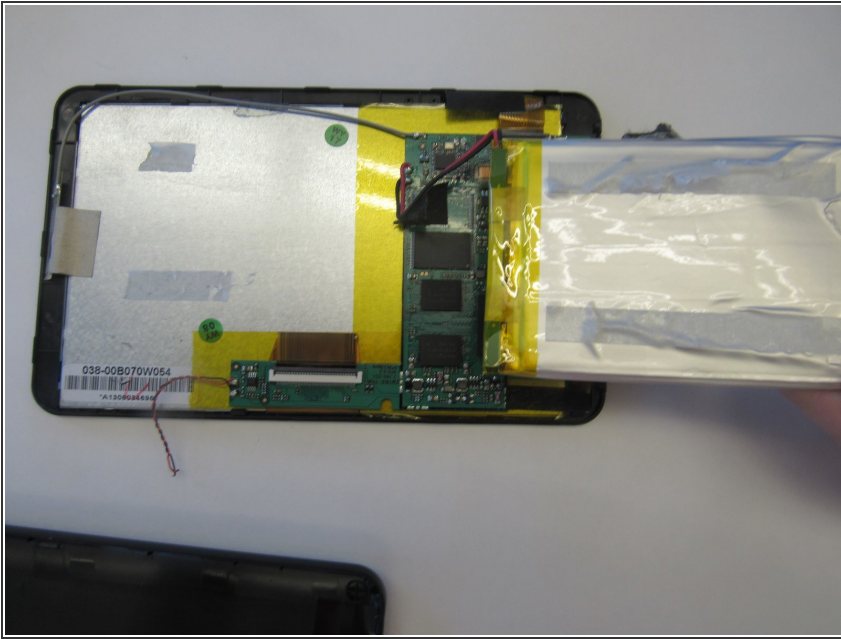
- Remove the two black tape strips from the battery pack.

Step 4



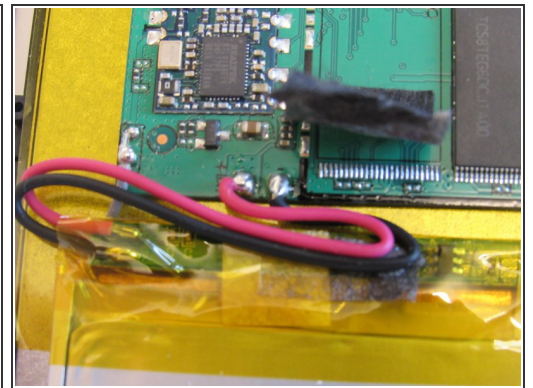
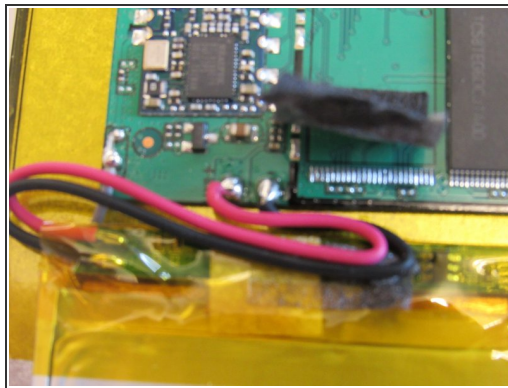
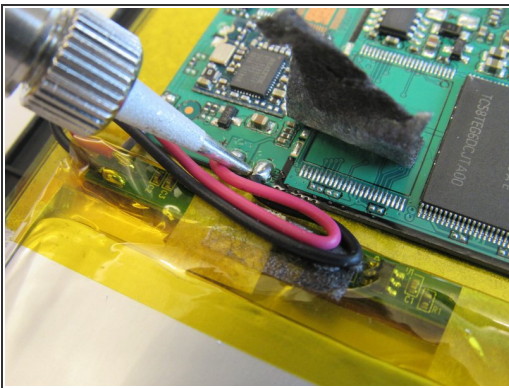
- Remove the battery pack by carefully prying the battery back from the front cover. Then, remove the wires connecting the battery to the motherboard at the motherboard using the tweezers.

Step 5



- Replace the damaged or malfunctioning battery with the new battery and wires. The new battery must be stuck back into its original place using thermal tape.

Step 6



- The new wires must be soldered back into place on the motherboard at the original location.
- For tips on soldering techniques, see this [Soldering Guide](#).

To reassemble your device, follow these instructions in reverse order.