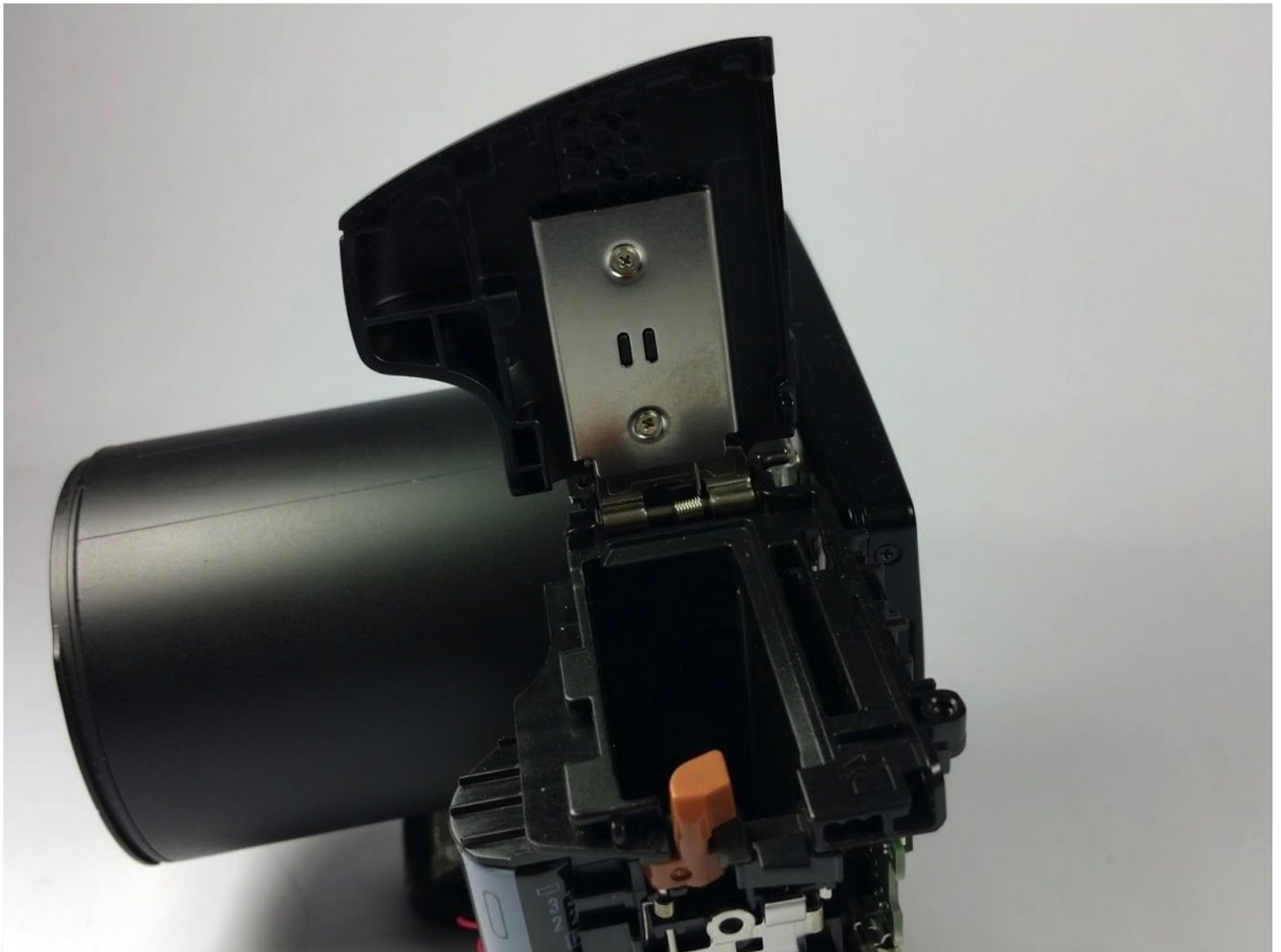




# Canon SX40 HS Camera Battery Door Contact Replacement

This guide is for the replacement of the...

Written By: John Bui



# INTRODUCTION

This guide is for the replacement of the battery door contact in the Canon SX40 HS Camera (Model name 5251B001). In this guide you will be walked through the steps of removing and replacing the faulty battery door contact with a fresh one.

Battery contacts, also known as battery springs or contact springs, are strips of metal (usually with springs attached) that are placed inside of the battery compartment and assist with maintaining a constant electrical connection between the powered device and the battery's terminals. If your device will not power on, randomly powers off, or displays the screen and lights dimmer than they should be, you may have a faulty battery door contact. Ensure power to the device is properly disconnected before you begin the procedure.

For instructions on how to disconnect power, see [here](#).

For instructions on what to do if the device's batteries are swollen, see [here](#).

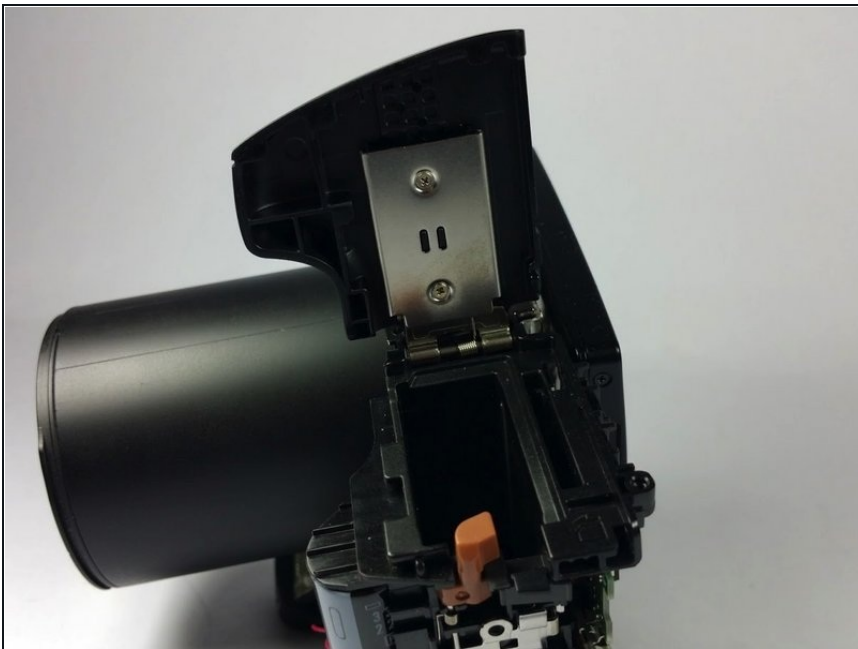
---

## TOOLS:

[Phillips #00 Screwdriver](#) (1)

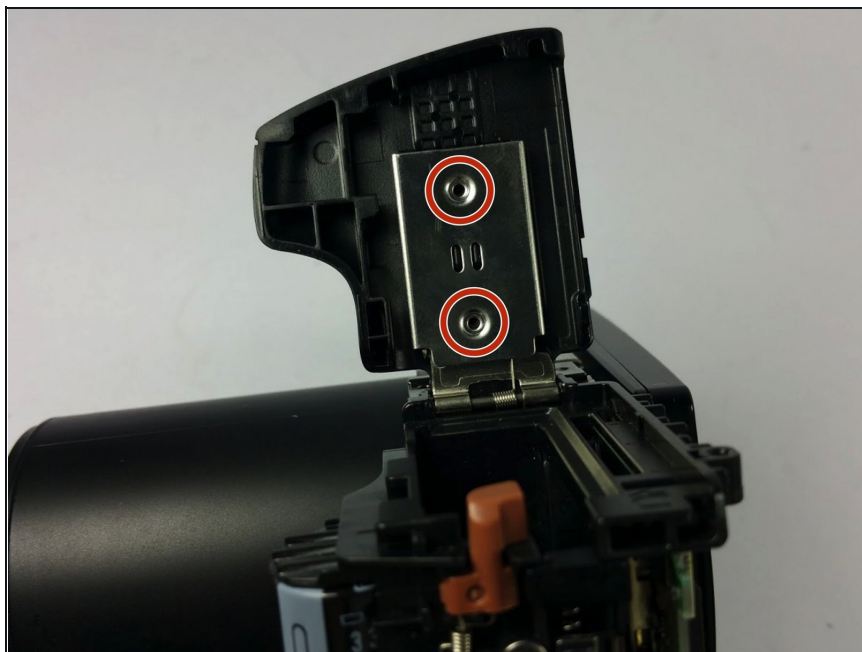
---

### Step 1 — Battery Door Contact



- Orient the camera so that the bottom of the camera is facing up and open the battery compartment.

## Step 2



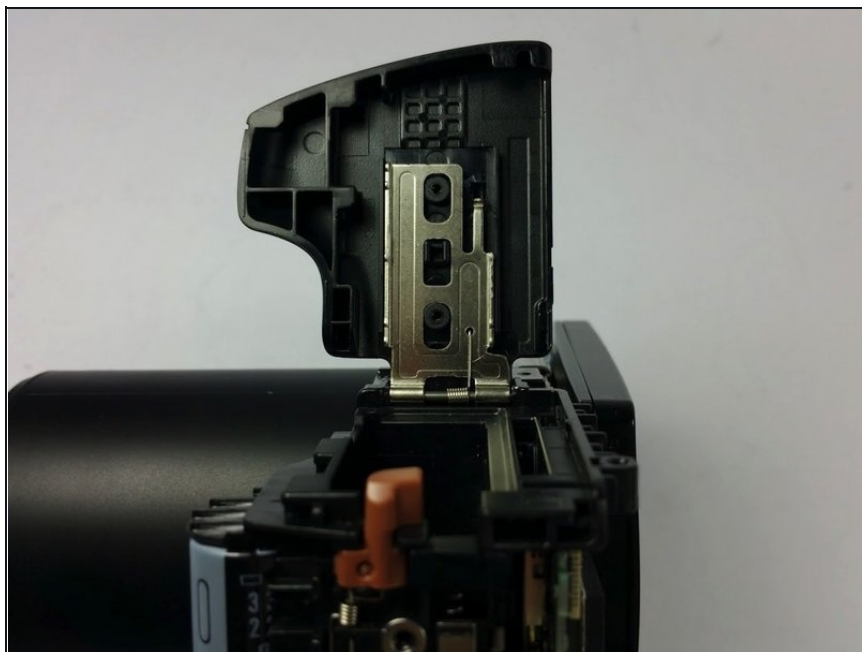
- Remove the two circled 2mm screws with a Phillips #00 screwdriver.

## Step 3



- Slide the metal battery contact away from the battery compartment cover.

## Step 4



- Remove the battery compartment cover from the metal bracket.

## Step 5



- Replace either the internal metal battery contact or external battery compartment cover.

---

To reassemble your device, follow these instructions in reverse order.