



Insignia NS-CLIP02 Power Auxiliary Port Replacement Replacement

Use this guide to replace the power auxiliary port in your Insignia NS-CLIP02.

Written By: Erik



INTRODUCTION

The Insignia NS-CLIP02 can develop a problem with power auxiliary ports malfunctioning, but don't worry. They're replaceable! If your device is not charging, this may be a key indicator that the port needs to be replaced.

Use this simple step-by-step guide to replace your motherboard that contains the auxiliary port in 30 minutes or less.



TOOLS:

- [Essential Electronics Toolkit](#) (1)
- [Metal Spudger](#) (1)



PARTS:

- [Insignia NS-CLIP02 Motherboard](#) (1)

Step 1 — Power Auxiliary Port Replacement



- Locate the bottom of the device.

Step 2



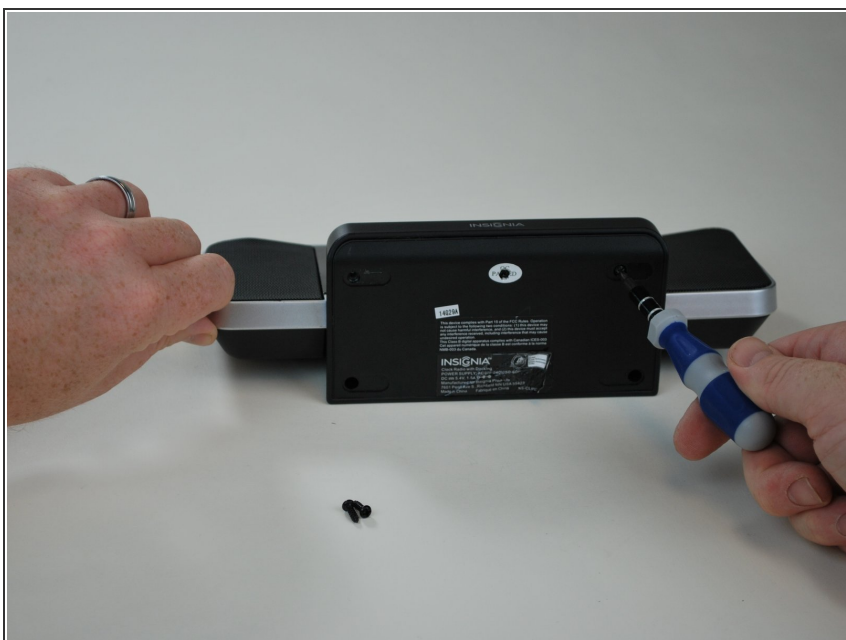
- Peel back the adhesive sticker using a metal spudger and remove the 11mm screw beneath the sticker with a Phillips head screw driver.

Step 3



- Using a plastic spudger, peel off the adhesive gel stoppers.

Step 4



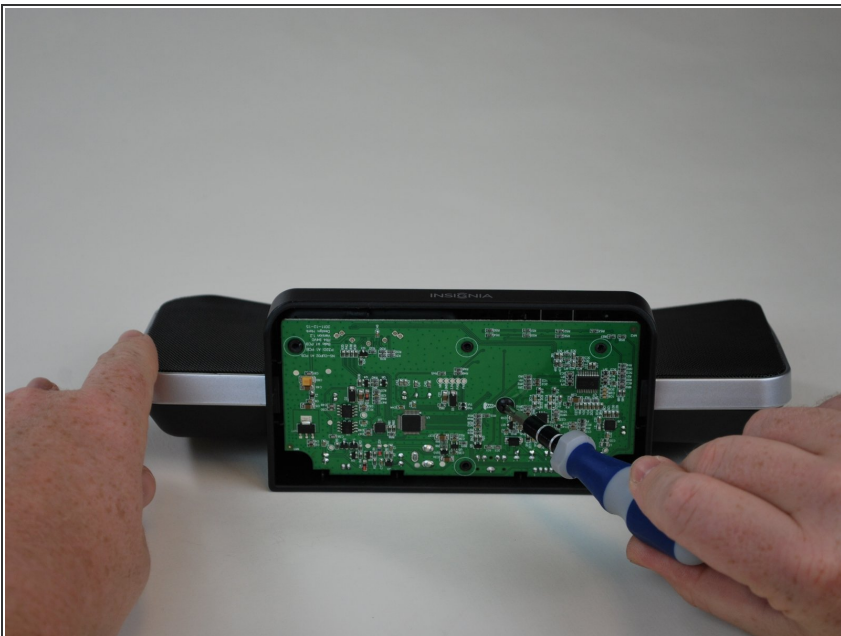
- Unscrew the six 11mm screws with a Phillips head screw driver.

Step 5



- Remove the bottom of the device to reveal the motherboard.

Step 6



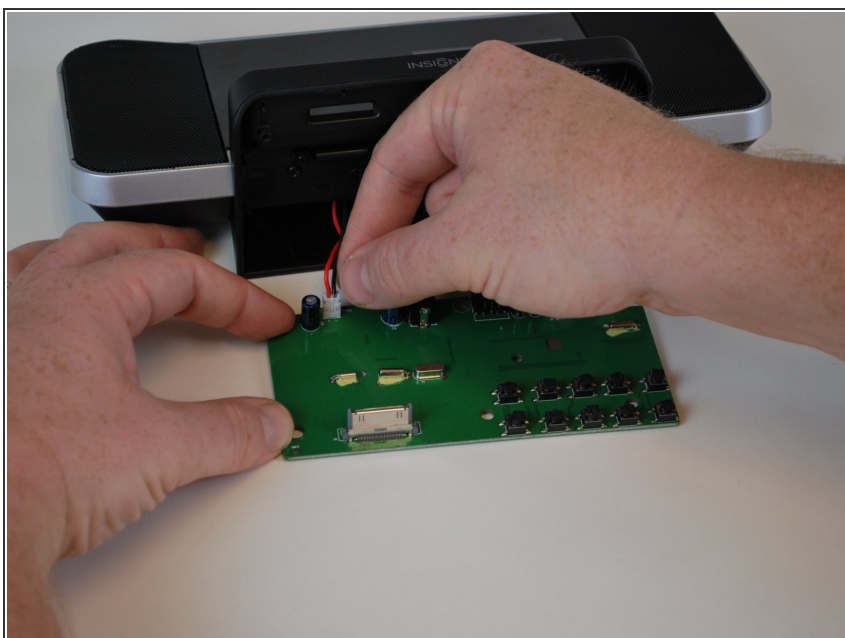
- Unscrew the 9.5mm screw located near the center of the motherboard with a Phillips head screw driver.

Step 7



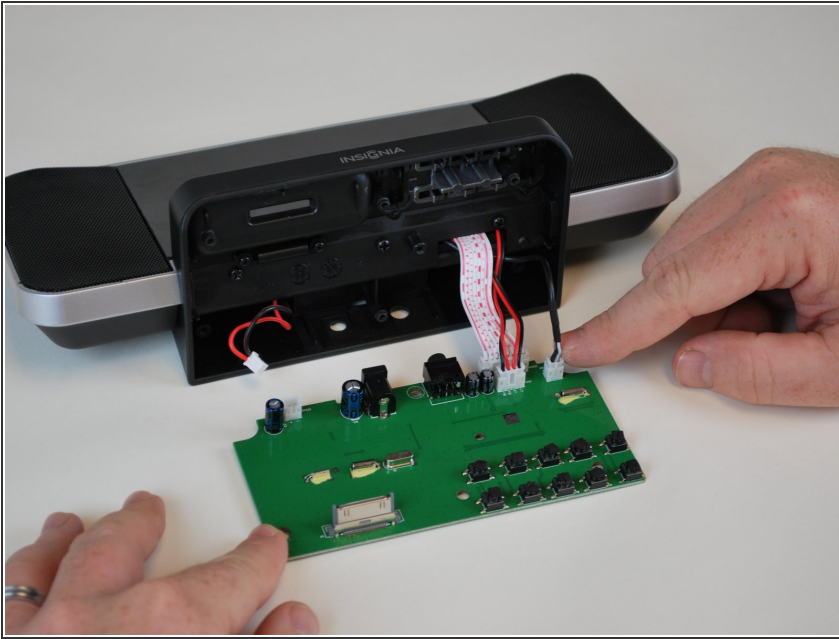
- Lift the motherboard from the device and lie it face down. Beware of the cables plugged in on the back side

Step 8



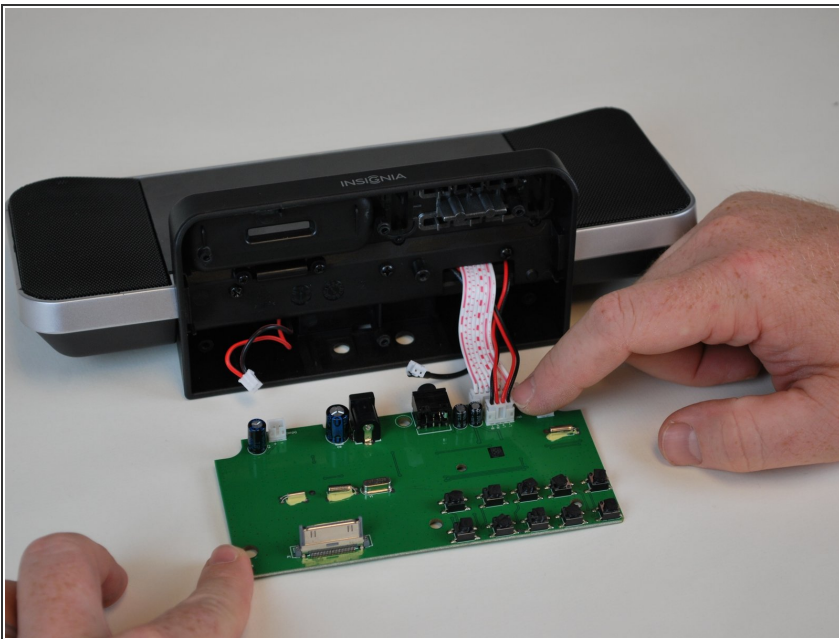
- Remove the plug to your left.

Step 9



- Remove the plug to your right from the motherboard.

Step 10



- Remove the plug in the front of the lcd screen plug.

Step 11



- Remove the LCD screen plug last. For reassembly, follow the instructions in reverse order, replacing the old motherboard with the new one to fix the power auxiliary port.

To reassemble your device, follow these instructions in reverse order.