



Canon PowerShot A2300 Flash Assembly Replacement

This guide will allow the user to disassemble the Canon PowerShot A2300 in order to reach and replace the flash.

Written By: Nathan McMillan



INTRODUCTION

This guide will allow the reader to replace the flash by walking through the steps disassembly steps required to reach the flash. It is first necessary to remove the front and back covers as well as reach the back of the display screen.



TOOLS:

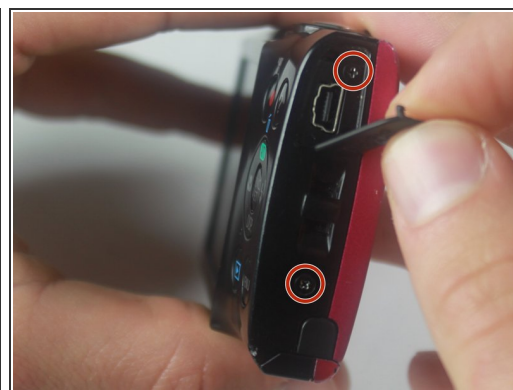
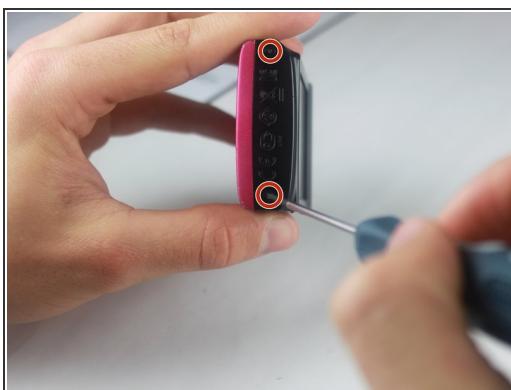
- [Spudger](#) (1)
 - [Phillips #00 Screwdriver](#) (1)
-

Step 1 — Front Cover




- Open the A/V Out Digital port cover on the function button side to reveal a screw.

Step 2



- Remove all 6 screws(2.70 mm), 2 on each side and 2 on the bottom.

 Screws are small and very easily lost.

Step 3



- Open the card/battery latch by sliding the cover away from the camera in the direction indicated by the arrow.
- ⓘ Doing this gives a spot to grip on the bottom of the front cover. This will make it easier to handle when removing.

Step 4



- Gently lift the bottom of the front cover to roughly a 30 degree angle.

Step 5



- Pull the top of the front cover away from the camera by gripping the top of the front cover by the corners where the cover is still attached to the body.

Step 6 — Back Cover




- Hold the camera in your hands with both thumbs on the screen with the screen faced up.
- ⓘ Keep close to the table top in case the camera falls out of your hands.

Step 7



- Pull the the bottom left corner of the cover up about an inch to the point shown in the picture.

 Do not completely remove the back cover by pulling on the side as shown. The cover is still attached on the top of the camera.

Step 8



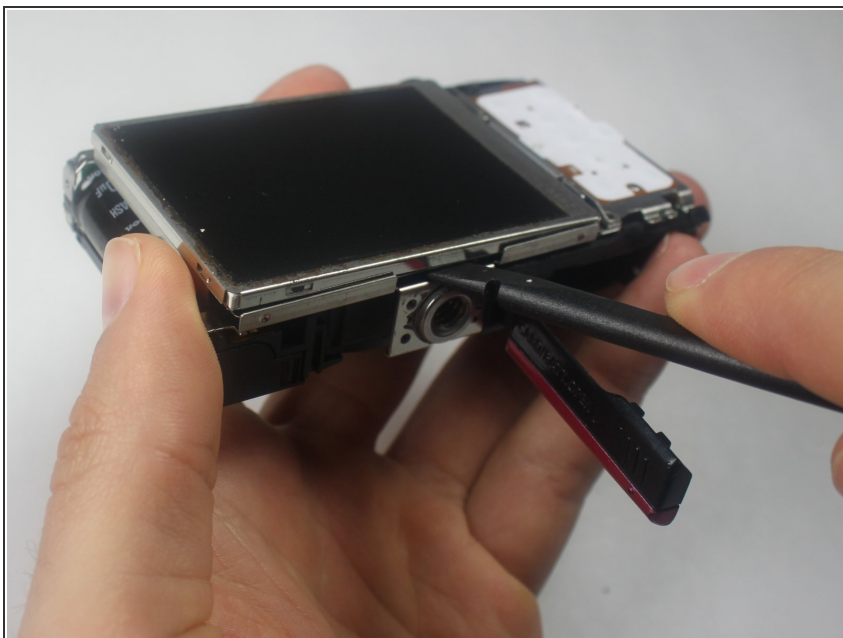
- Pry the top off by sliding the spudger under the On/Off button.

Step 9



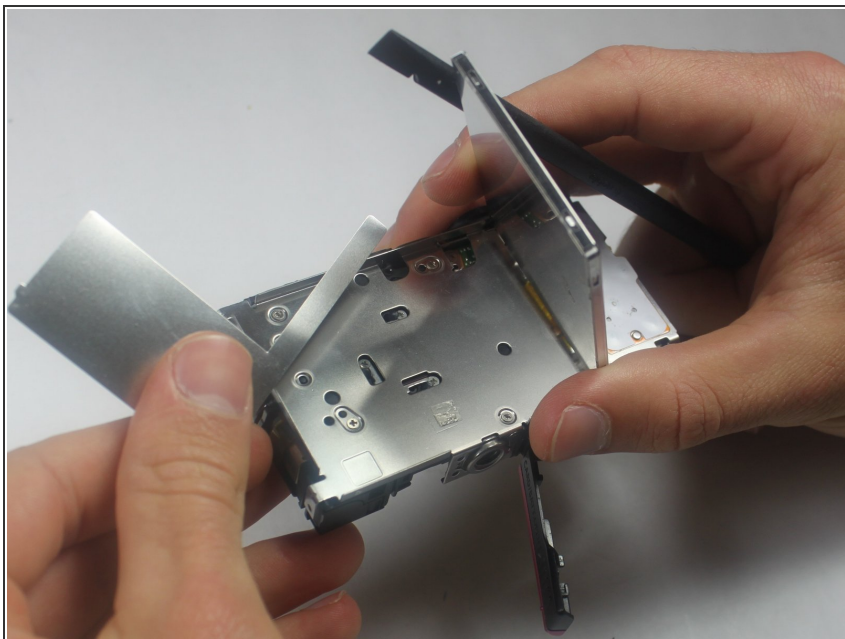
- Slide the cover to the right and off the camera.
- ⓘ Gently pry using the spudger on the right side if necessary.
- ⓘ The A/V OUT DIGITAL cover will sometimes become loose and disconnect from the cover

Step 10 — Flash Assembly



- Raise the screen by wedging the spudger between the bottom of the screen and the mount hole.

Step 11



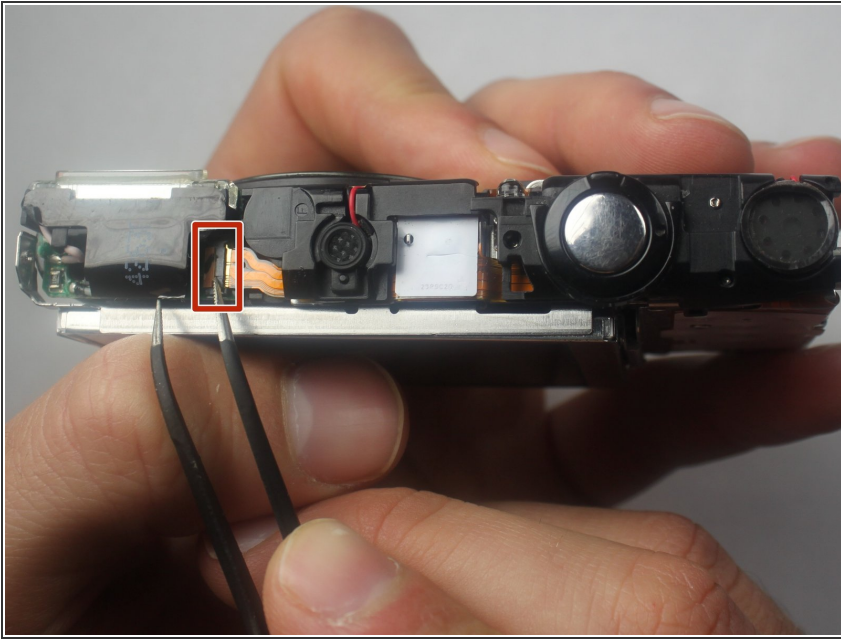
- Remove the metal sheet that is under the screen.

Step 12



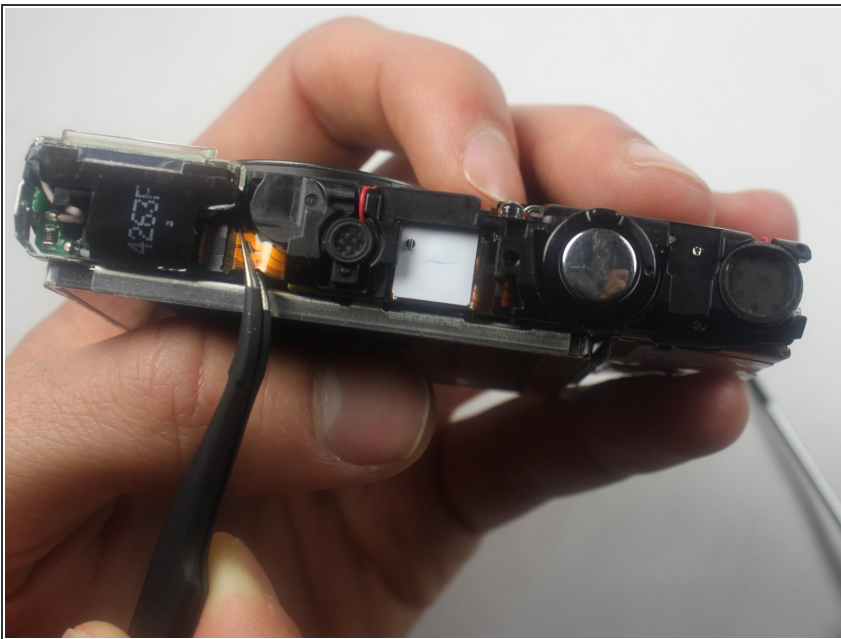
- Remove the top left screw on the metal sheet that is behind the screen.
- ⓘ This screw connects the flash to the metal sheet.

Step 13



- Use one side of the tweezers to raise the orange retaining flap on the zero insertion force (ZIF) connector to a vertical position.

Step 14



- Gently pull the orange ribbon cable out of the ZIF connector using the tweezers.

Step 15



- Remove the flash by gently rotating slightly back and forth and pulling up.

To reassemble your device, follow these instructions in reverse order.