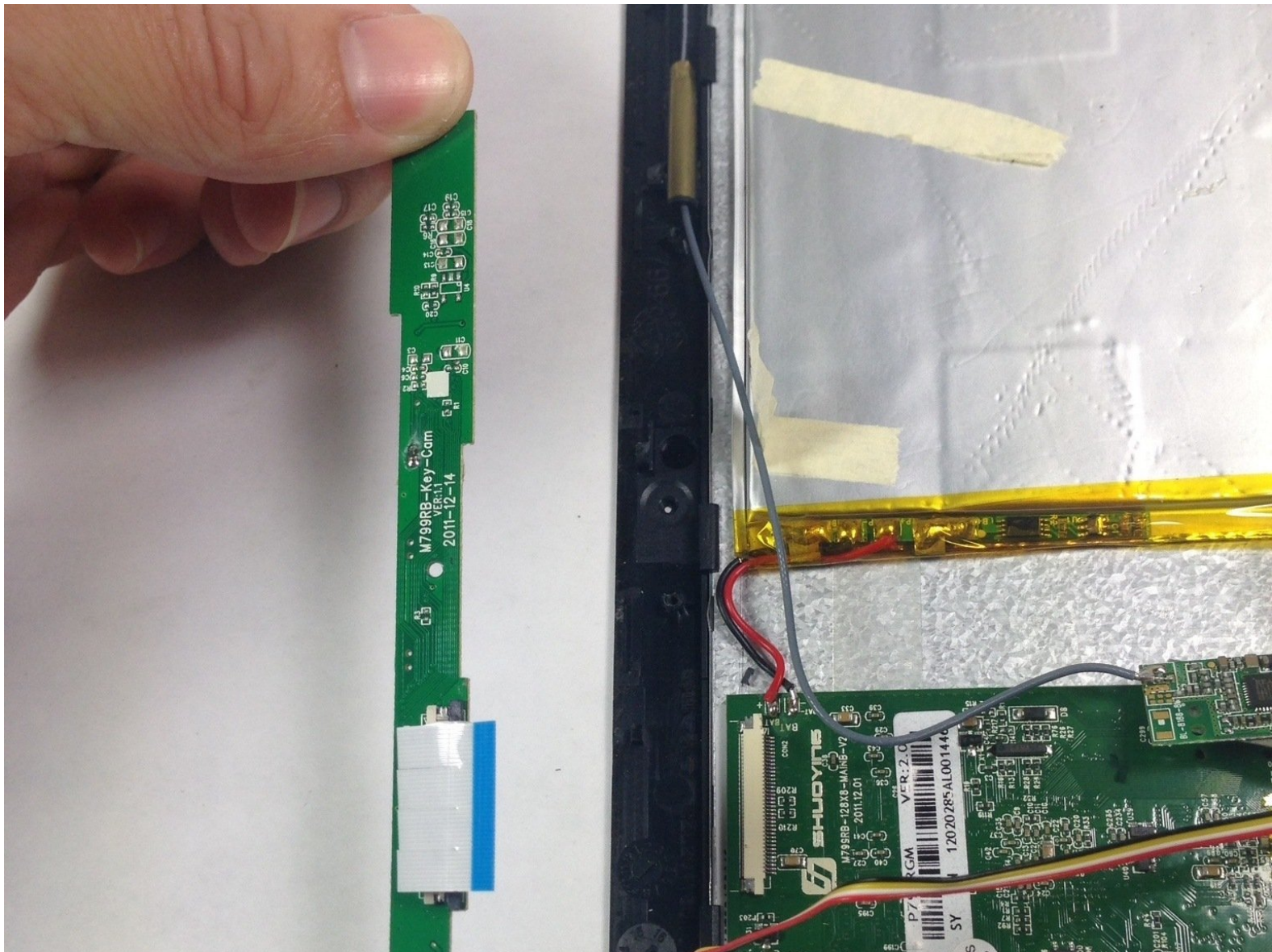




# Ematic eGlide 4 Side Button Array Replacement

This guide will help you replace the side button array located on the right side of your Emetic eGlide 4.

Written By: Bailey Hughes



This document was generated on 2020-11-28 04:25:18 AM (MST).

---

## INTRODUCTION

The side button array consists of the volume button, power button, M button and H button. The side button array is connected to the motherboard with a ribbon wire and to the front case with 3 screws. It is simple to remove and replace.



### TOOLS:

- [Phillips #00 Screwdriver](#) (1)
  - [Spudger](#) (1)
-

## Step 1 — Rear Panel



- Remove the 4.6mm Phillips #00 screw at the base of the device.

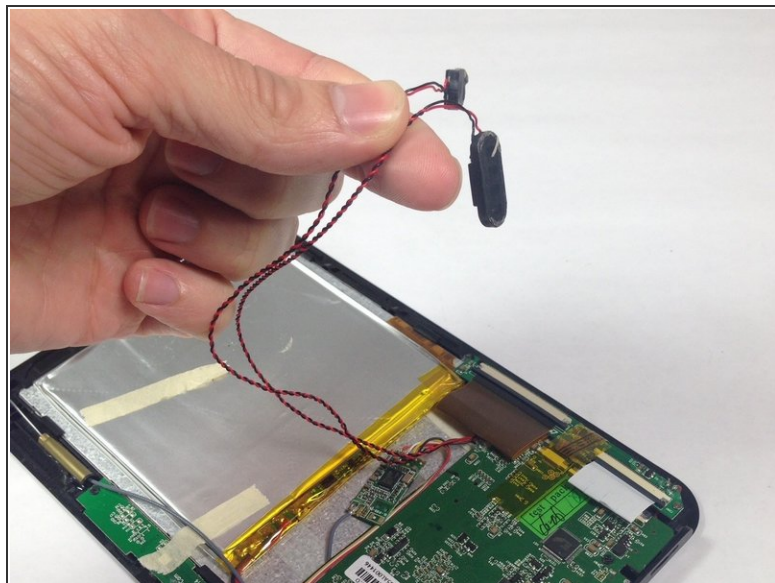
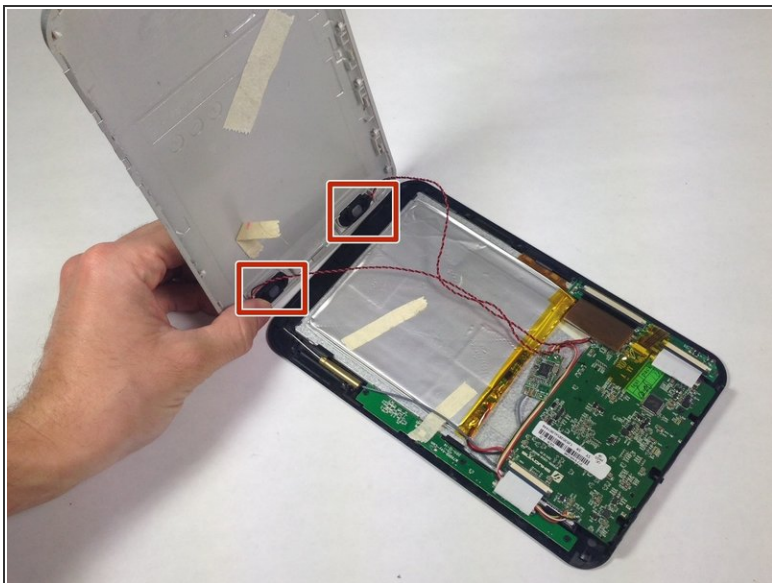
## Step 2



- Slide the rear panel away from the base parallel to the screen.

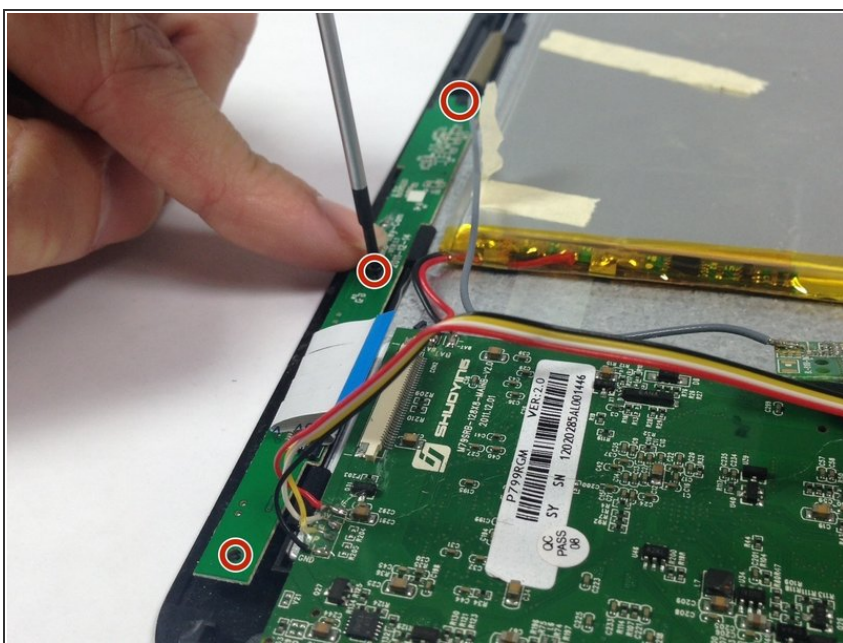


## Step 3



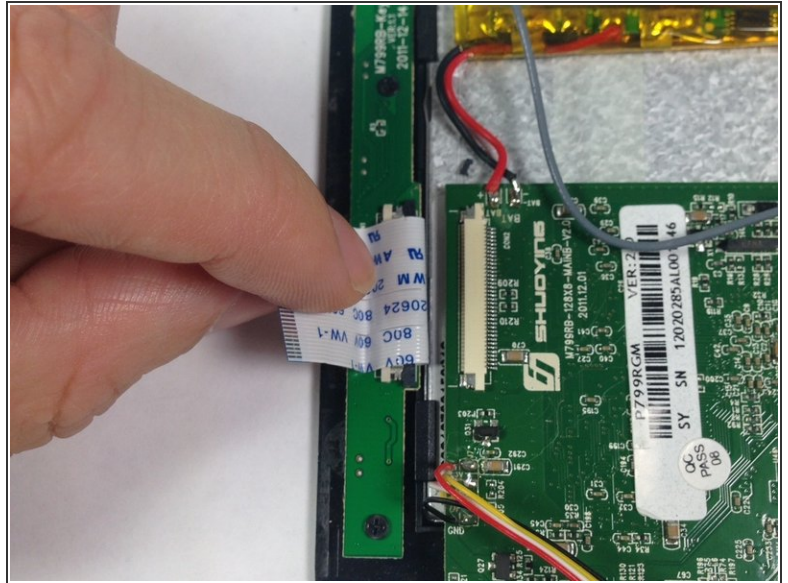
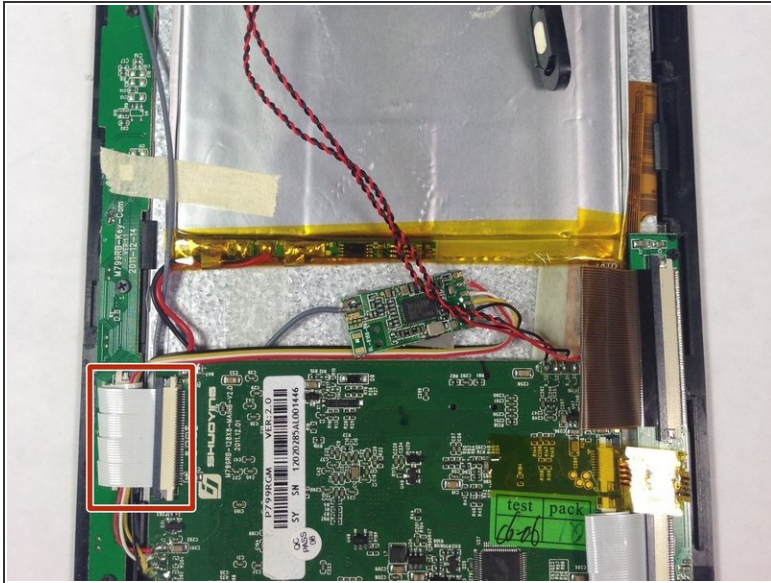
- Carefully remove the speakers from the rear panel.
- Pull the speakers off of the rear panel.

## Step 4 — Side Button Array



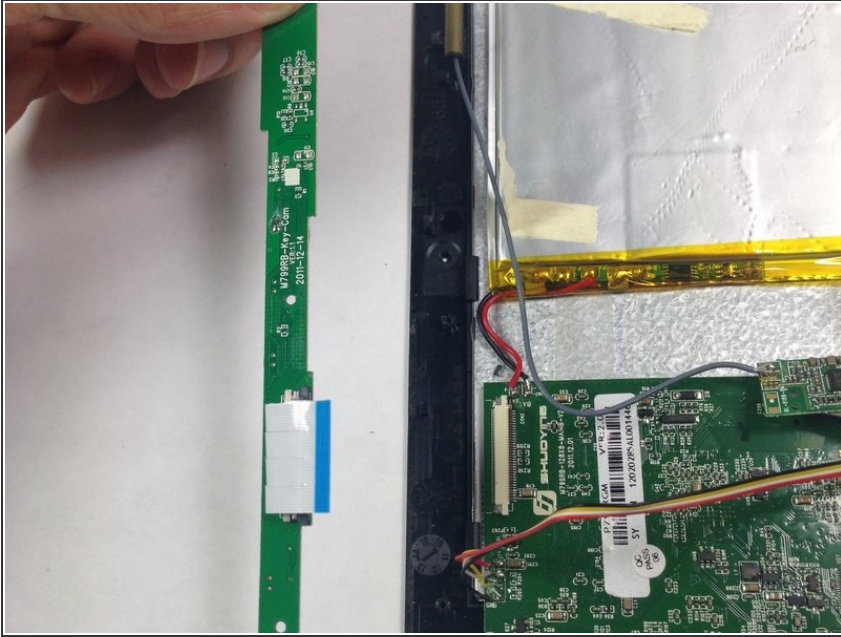
- Remove the 3 Phillips #00 4.5 mm screws from the side button array.

## Step 5



- Slide the grey ribbon wire connector clip away from the ribbon wire port on the motherboard using the pointed tip of a spudger. This process will unclip the wire from the motherboard to release connection.
- ⓘ You do not need to fully disconnect the ribbon wire clip from the ribbon wire port: the clip will stay attached in a loose fit.
- Remove the ribbon wire from the ribbon wire port on the motherboard.

## Step 6



- Remove the side button array from the device.

To reassemble your device, follow these instructions in reverse order.