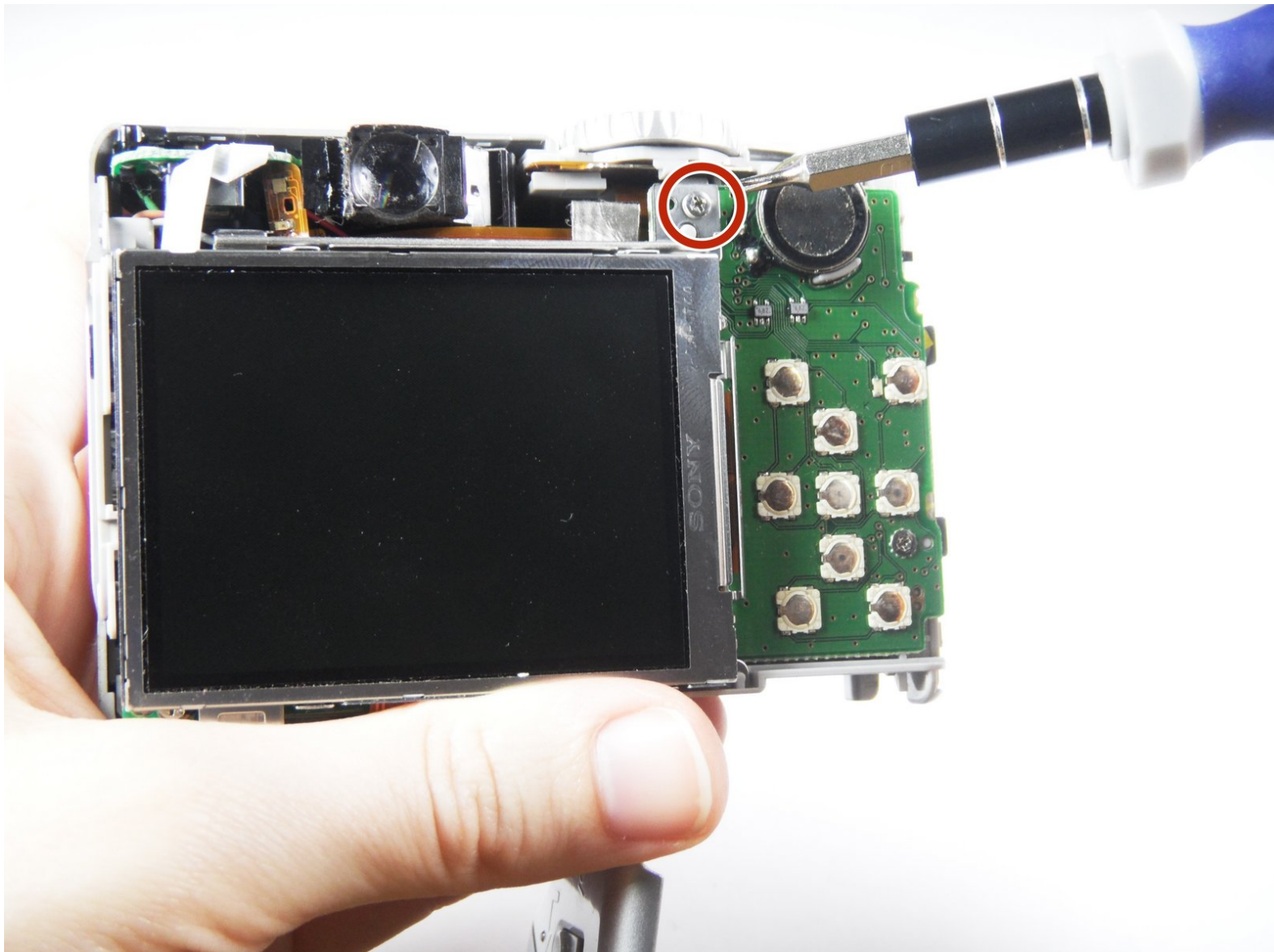




# Canon PowerShot A540 Function Key Motherboard Replacement

This guide teaches you how to remove and replace the flash motherboard.

Written By: Cooper Hale



## INTRODUCTION

If your camera's function keys are nonresponsive, you may need to replace the function key motherboard. After removing the back cover and the LCD screen, you will be able to replace the function key motherboard yourself.



### TOOLS:

- [Phillips #000 Screwdriver](#) (1)
  - [Spudger](#) (1)
-

## Step 1 — Back Cover



- Turn off the camera.
- Turn the camera upside-down and press the tab to release the battery cover. Remove the batteries.

## Step 2



- Turn the camera upside down to view the "Card/Batt. Open" Cover.
- Use a Phillips head #000 screwdriver to remove the three (3) 4.0 mm screws.

## Step 3



- Open "Card/Batt. Open" Cover.
- Remove the one (1) 5.0 mm screw with the Phillips head #000 screwdriver.

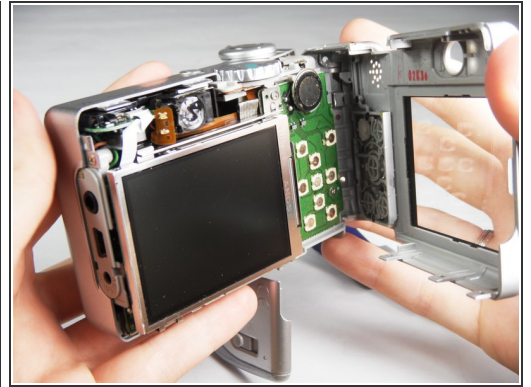
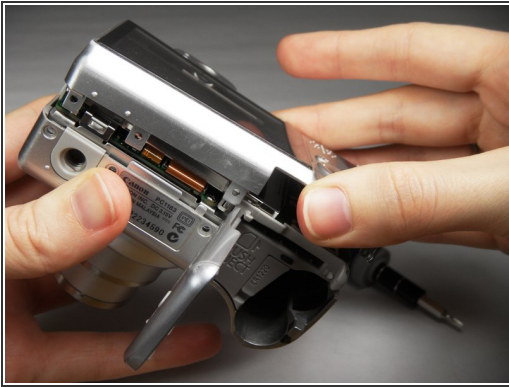
## Step 4




- Turn the camera to the right side of the LCD screen.
- Remove the three (3) 4.0 mm screws with the Phillips head #000 screwdriver.



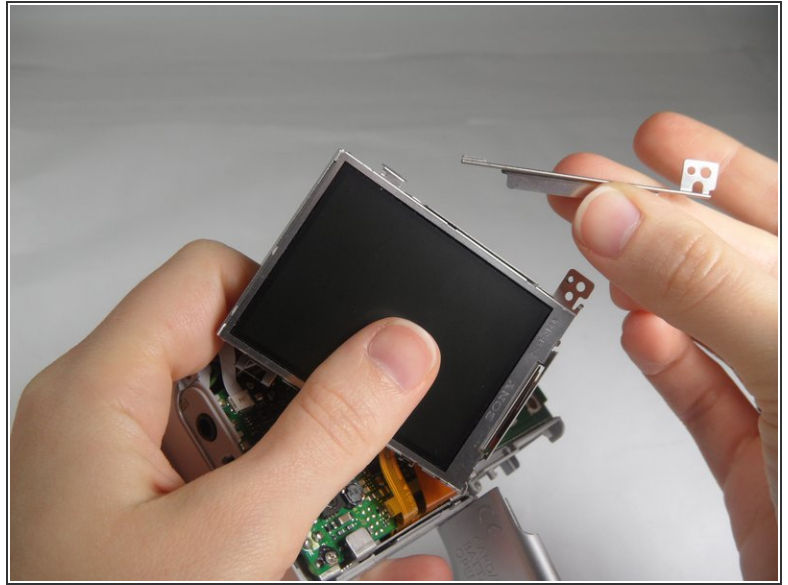
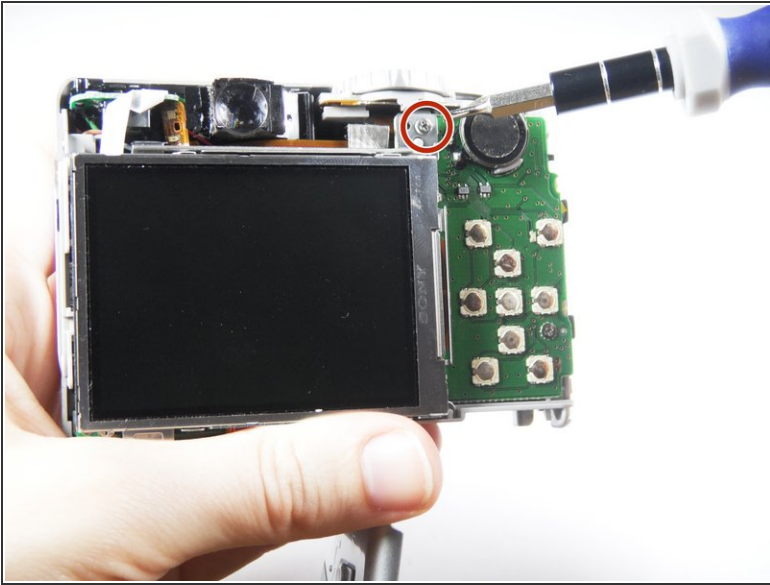
## Step 5



- Gently remove the back cover.
- Start at the bottom at the corner of the "Card/Batt. Open" Cover.
- Then move onto the other edges and the top.

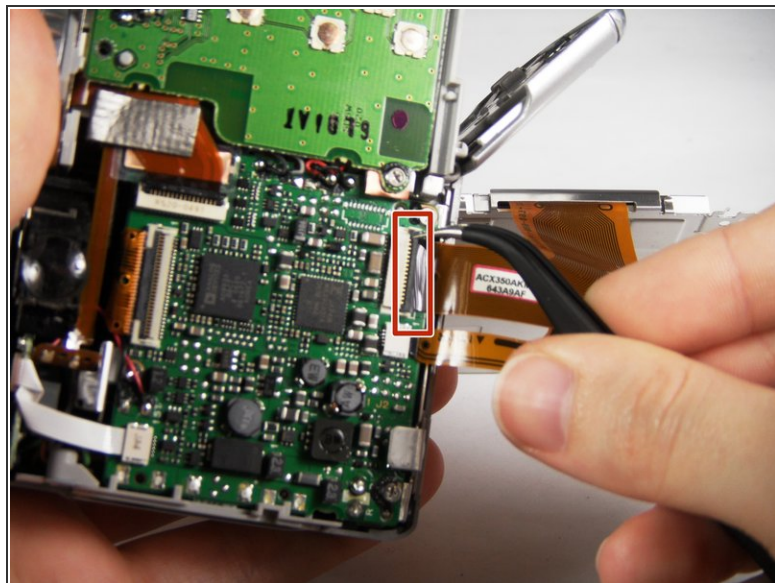
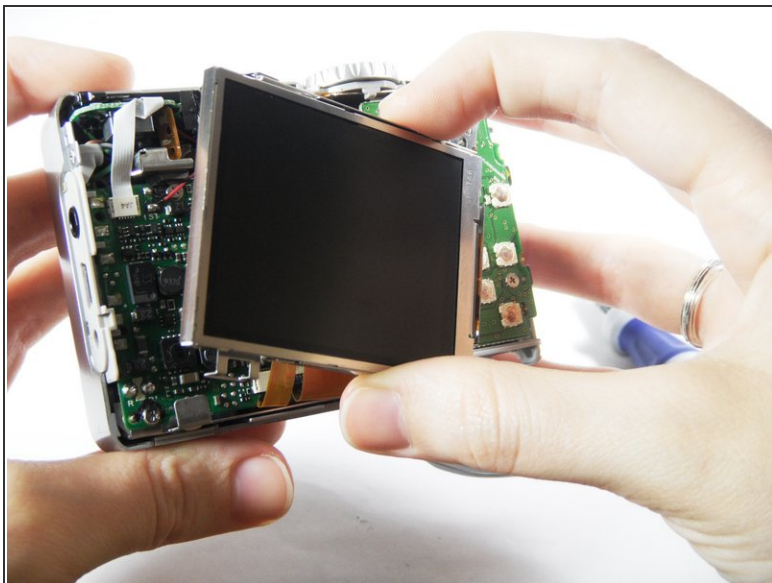
 It may be tight at the top!

## Step 6 — Function Key Motherboard



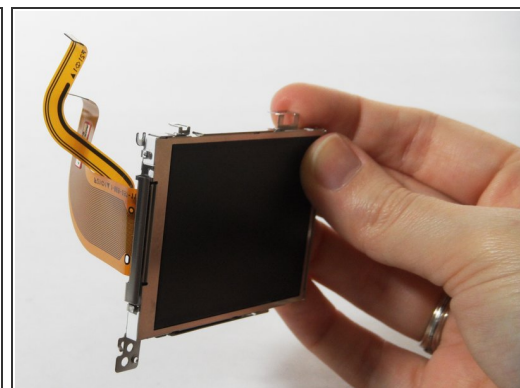
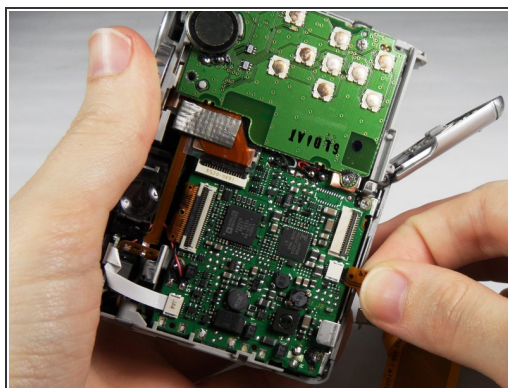
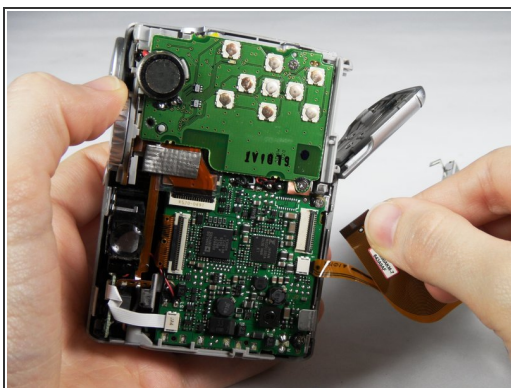
- Turn the camera to view the back.
- Remove the one (1) 3.0 mm screw on the top right corner of the screen.
- ⓘ There is a small metal bar that rests on this frame. Keep it with the screws that have been removed from the camera.

## Step 7



- Lift the LCD Screen off of the back to view the attached ribbon cables.
- Use tweezers to flip the black bar up.

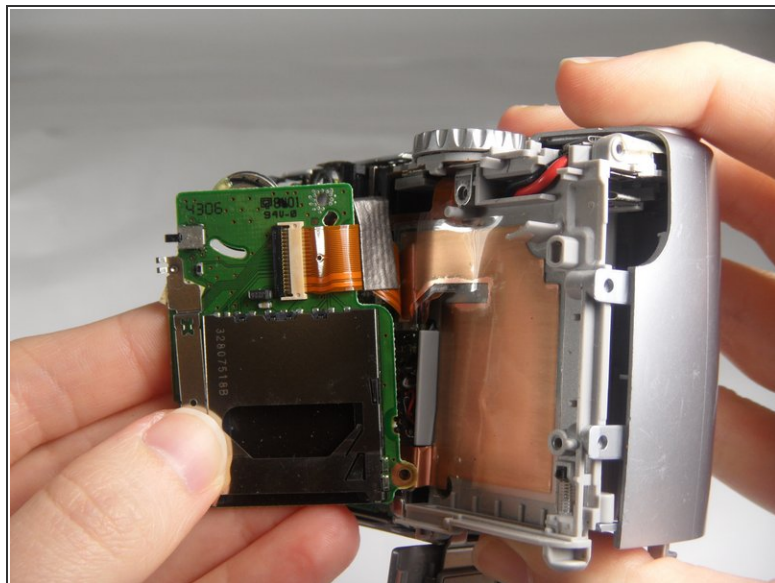
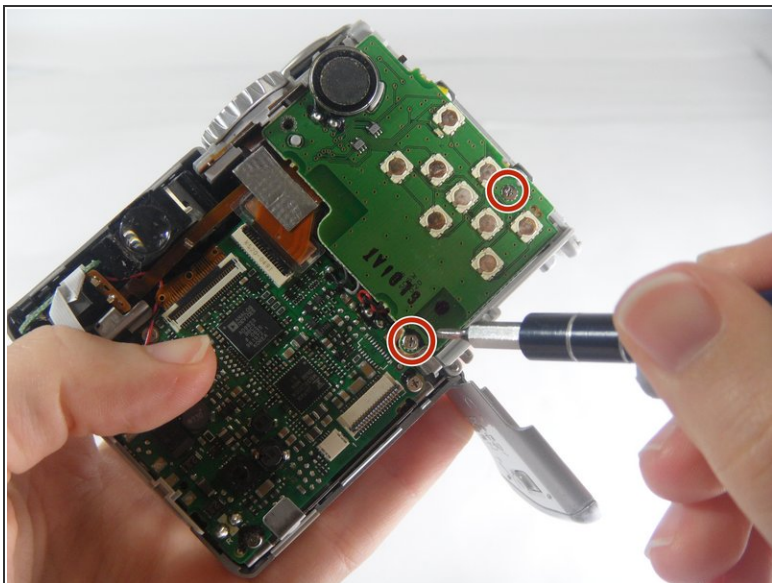
## Step 8



- Gently pull the big ribbon out.
  - Gently pull the small ribbon out.
- i** The small ribbon does not have a bar like the big ribbon.

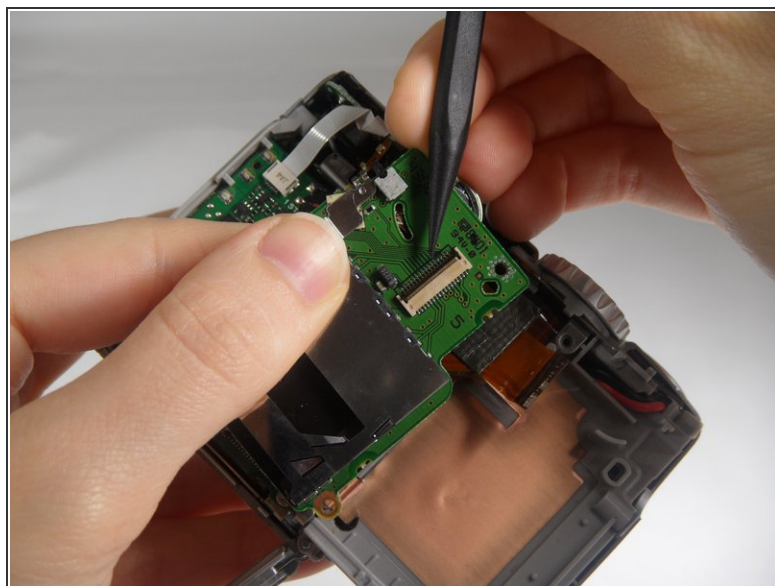
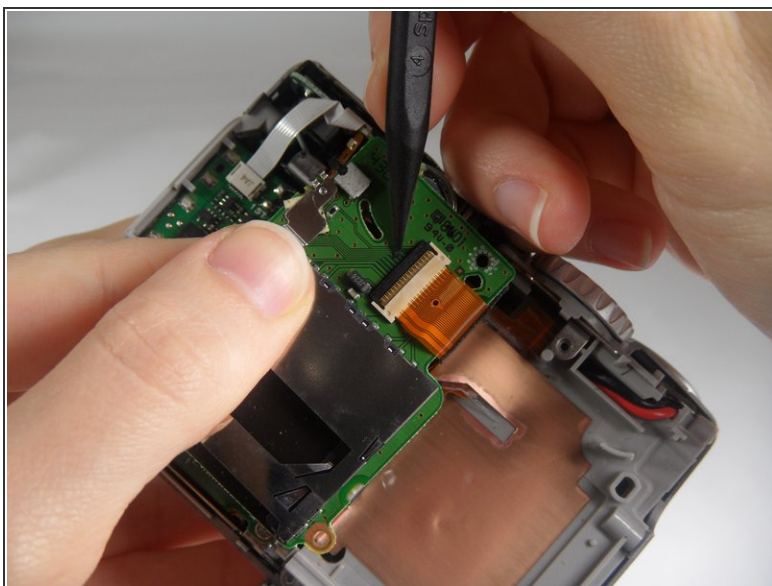


## Step 9



- Remove the two (2) 3.0 mm screws with the Phillips head #000 screwdriver.

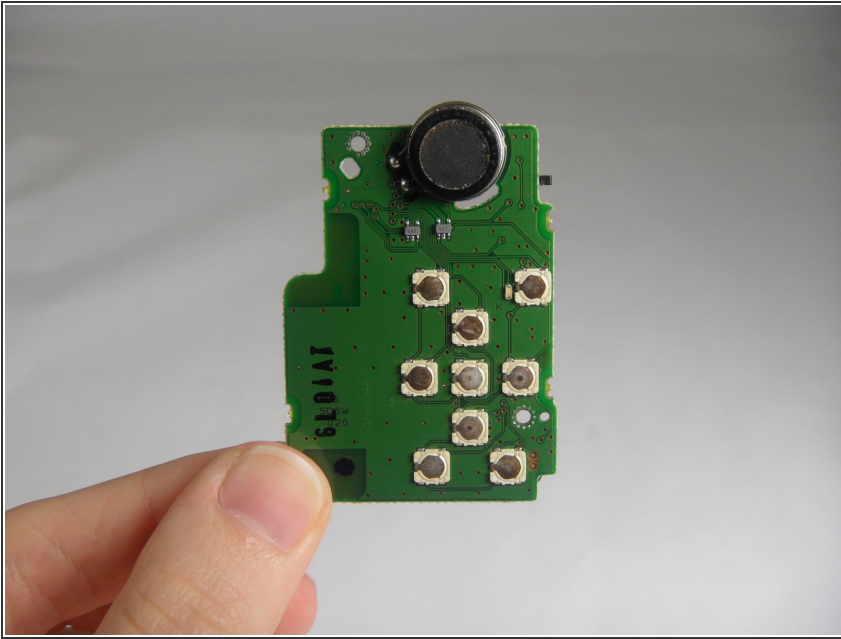
## Step 10



- Remove the orange ribbon from the clamp by using a Spudger to push the bar up.



## Step 11



- Remove the Function Key Motherboard and replace.
- ⓘ There is another metal bar that comes off of the SD Card reader when screws are removed.

To reassemble your device, follow these instructions in reverse order.