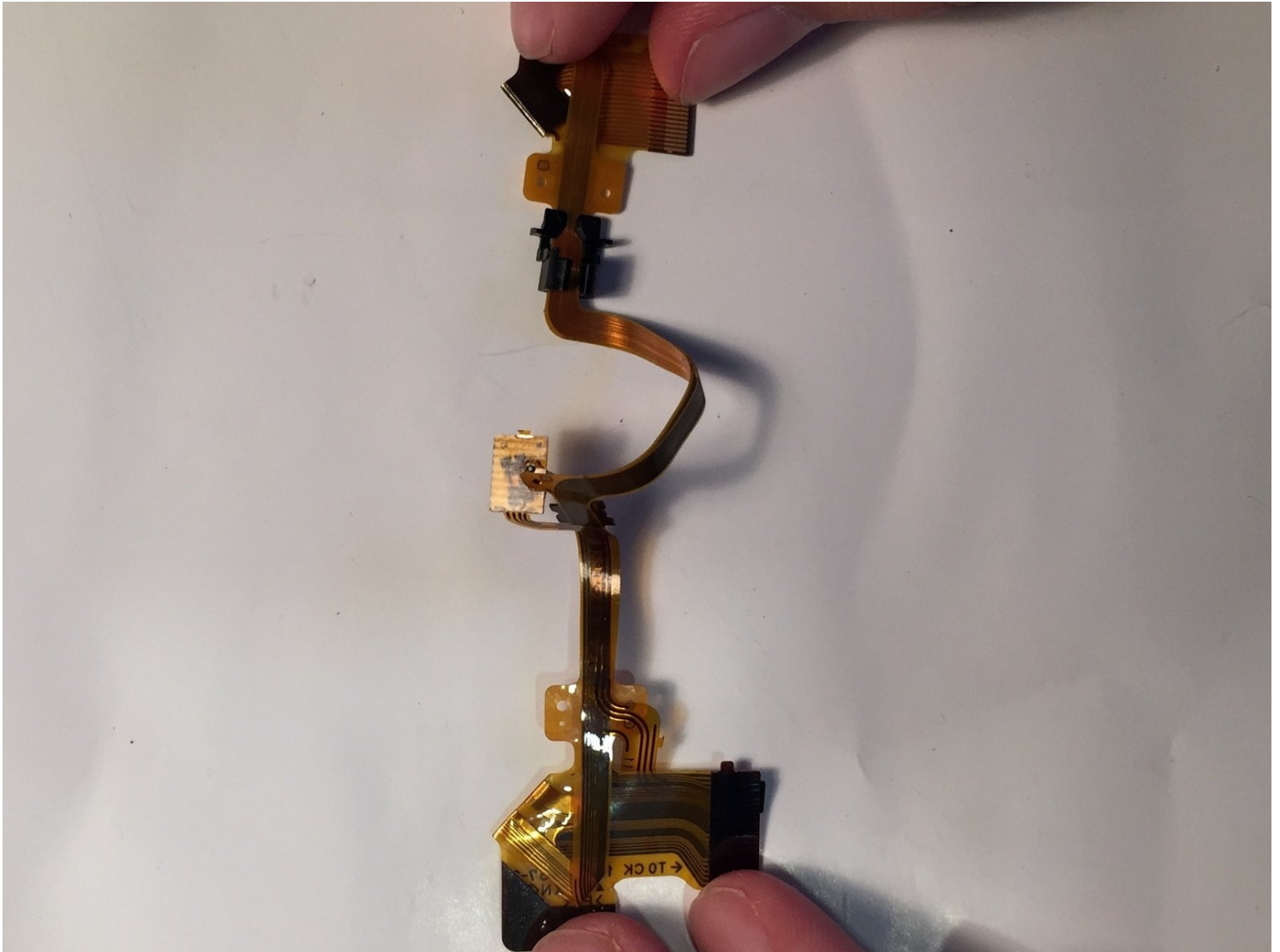




Sony Handycam DCR-SR42 Flex Cable Replacement

The Flex Cable transmits data to the screen. It...

Written By: Dan Muller



INTRODUCTION

The Flex Cable transmits data to the screen. It may be broken if the camera appears to be working, however the display screen shows pixelated lines. You can repair the LCD Display by removing the broken Flex Cable and replacing it with a new one.

Replacing the Flex Cable of the DCR-SR42 is a simple procedure that will take no more than 45 minutes. However, the user should be careful when disassembling the camera in order to avoid damaging the flex cable or any other internal components of the camera. The user should also ensure that the battery is disconnected from the camera at least an hour before disassembly is attempted, since capacitors inside the camera can remain charged with electricity some time after the battery is removed. It is necessary to allow capacitors to discharge to prevent injury to the user or damage to the camera.

For problems pertaining to the Flex cable, please refer to the [Sony Handycam DCR SR-42 Troubleshooting Guide](#)

TOOLS:

Phillips #00 Screwdriver (1)

iFixit Opening Tool (1)

Step 1 — Hard Drive



- Remove the battery, and use the Phillips #00 precision screwdriver to then remove the three 3mm Phillips #00 screws under the battery.

 Wait 1 hour after removing the battery before continuing to disassemble the camera.

Step 2



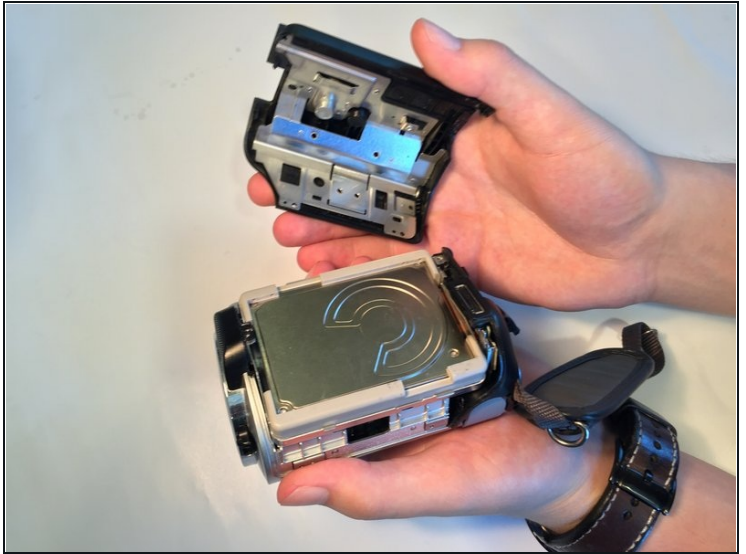
- Remove the three 3mm #00 Phillips screws on the bottom of the camera.

Step 3



- Remove the three 3mm Phillips #00 screws on the side of the camera.
- Remove the 4mm Phillips #00 screw under the AV port cover.

Step 4



- Gently pull the black plastic hard drive cover away from the body of the camera. This will expose the hard drive.
- ⓘ Even with all the screws removed, this part will require some force to remove.

Step 5



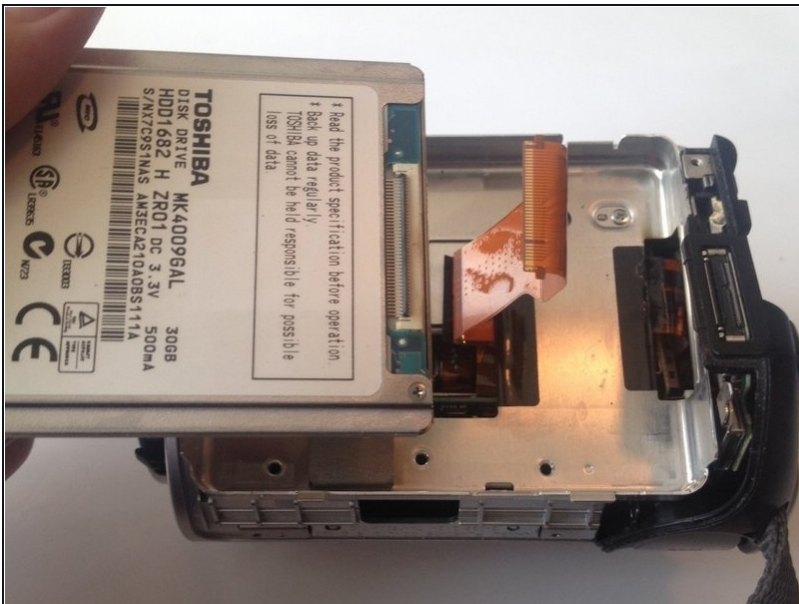
- Lift the hard drive out of the camera by grasping the grey rubber mounting brackets and pulling them upwards.
- ⚠ The hard drive is attached to the flex cable. Remove the hard drive slowly to prevent the flex cable from being damaged.

Step 6



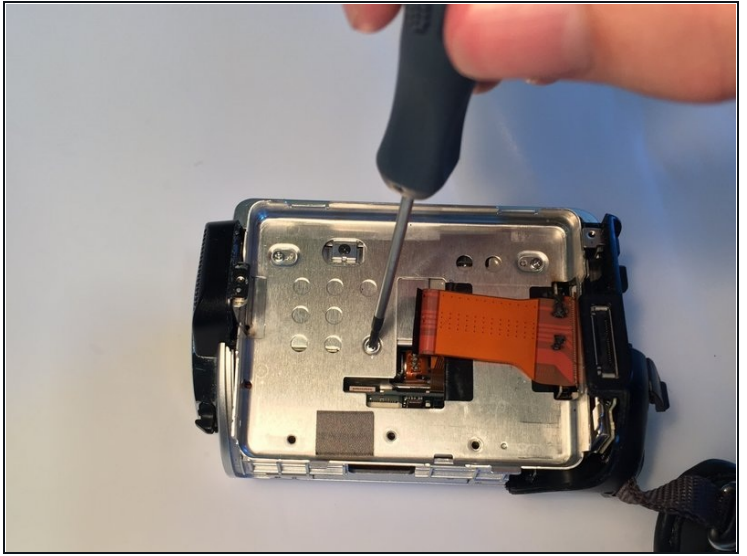
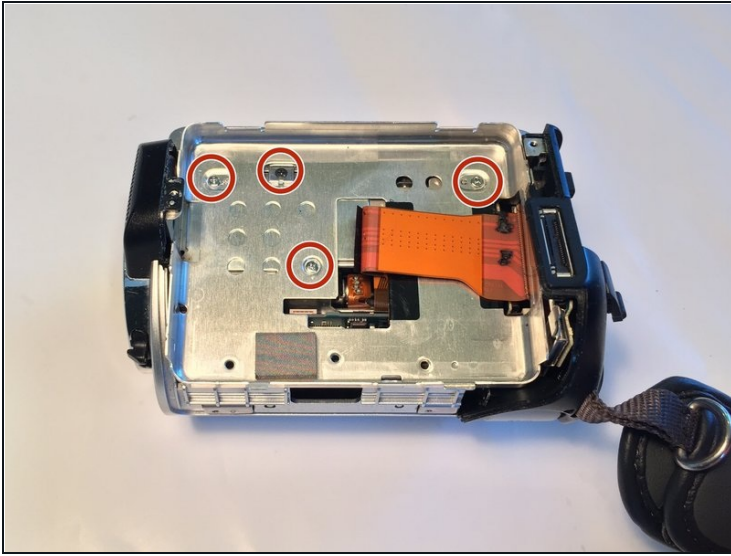
- Remove the rubber mounting brackets by pulling them off the hard drive.

Step 7



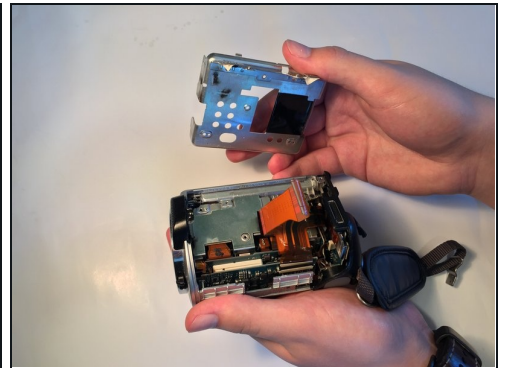
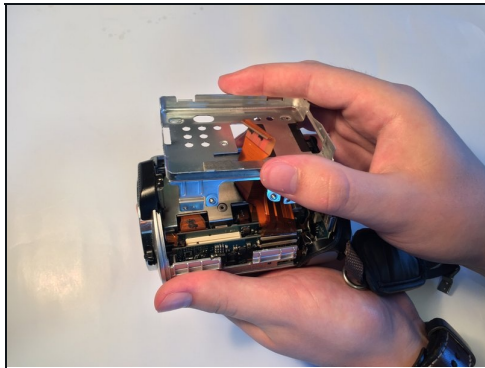
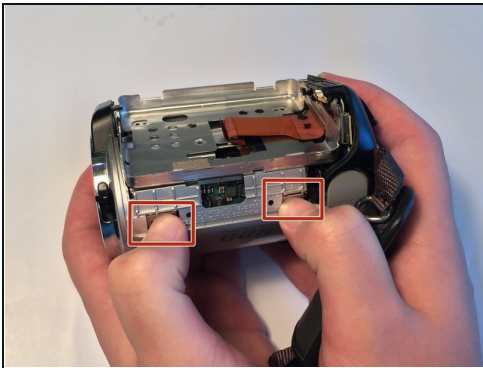
- Carefully unplug the flex cable from the hard drive.

Step 8 — Internal Components



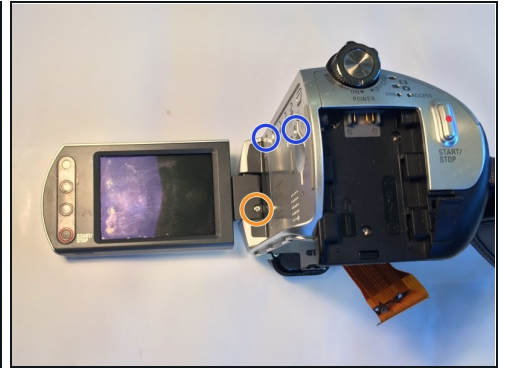
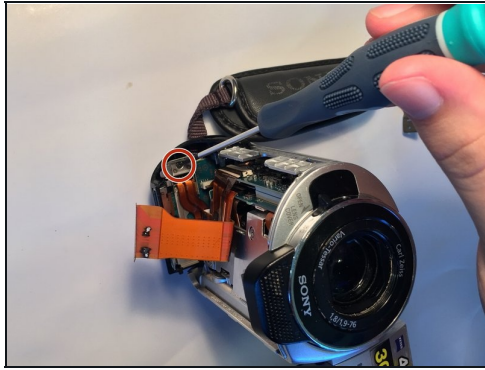
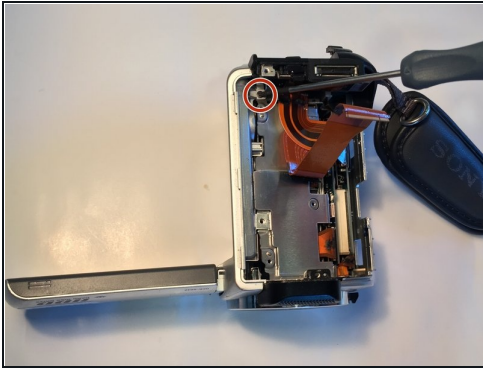
- Remove the four 3mm Phillips #00 screws from under the hard drive.

Step 9



- Press in on the two tabs as shown and lift the metal plate up and off the camera.
- ⓘ Even with all the screws removed, this part will require some force to remove.

Step 10



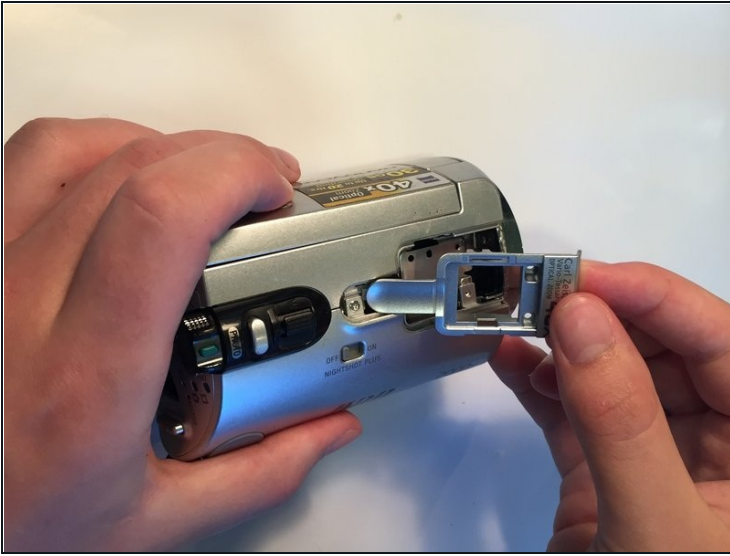
- Remove the two 4mm Phillips #00 screws from the underside of the camera.
- Remove the 2 mm Phillips #00 screw from the screen hinge.
- Remove the two 6mm Philips #00 screws from the side

Step 11



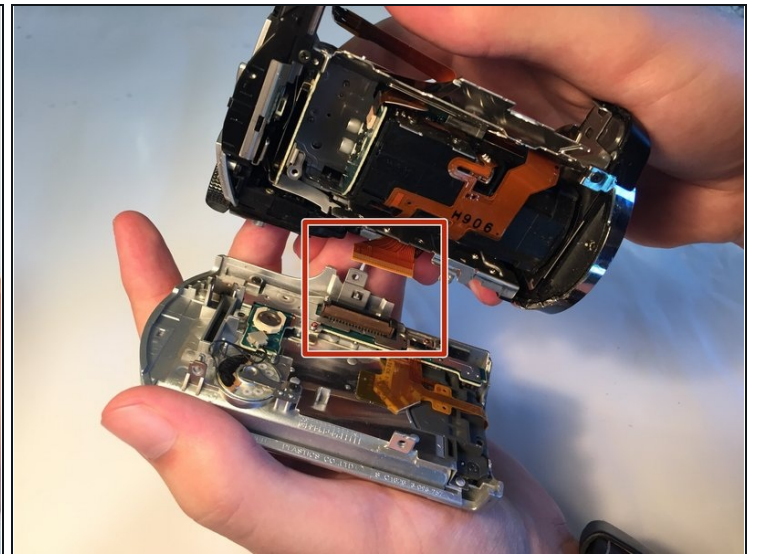
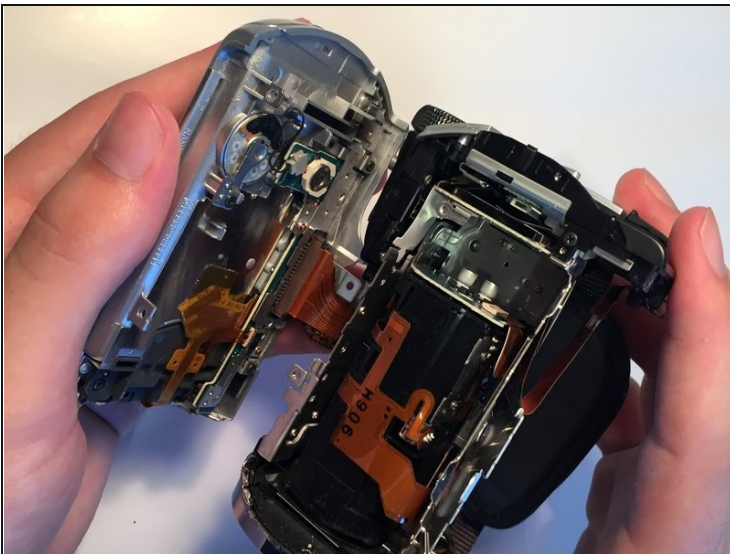
- Use the plastic opening tool to remove the plastic cover from the top of the camera.
- Remove the two 3mm Phillips #00 screws from underneath the plastic cover.

Step 12



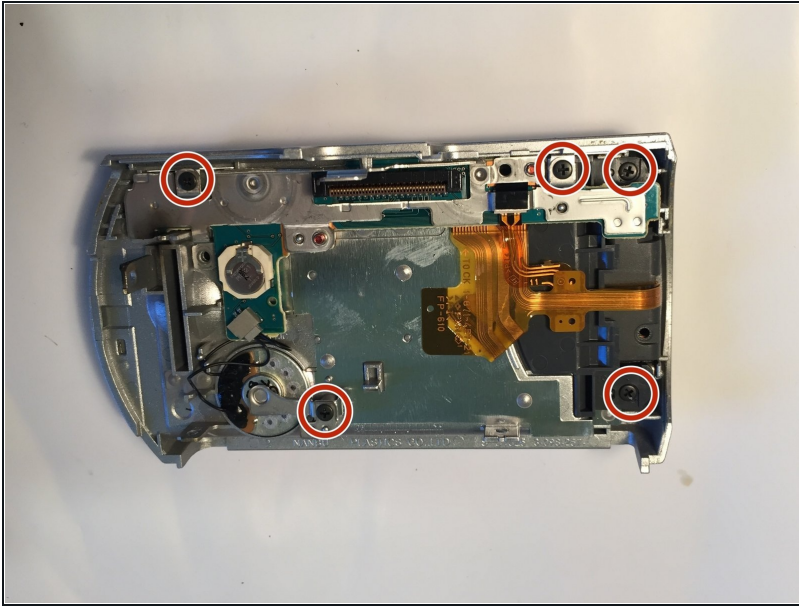
- Remove the second plastic cover from the top of the camera.
- Remove the 4mm Phillips #00 screw from underneath the cover.

Step 13



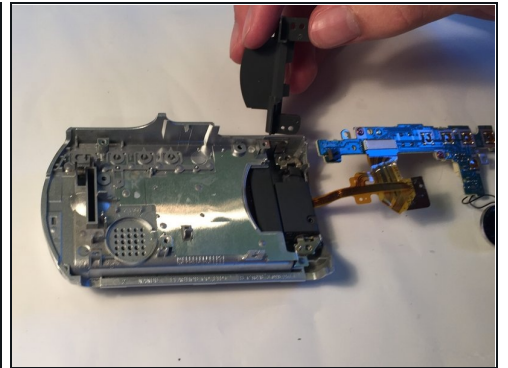
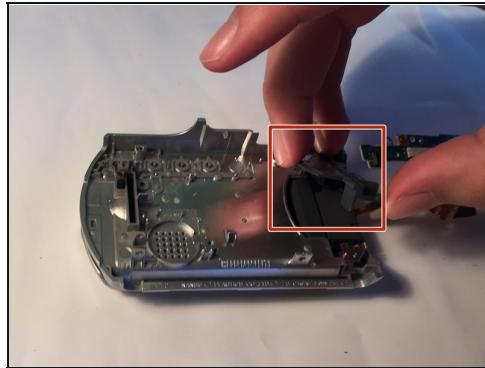
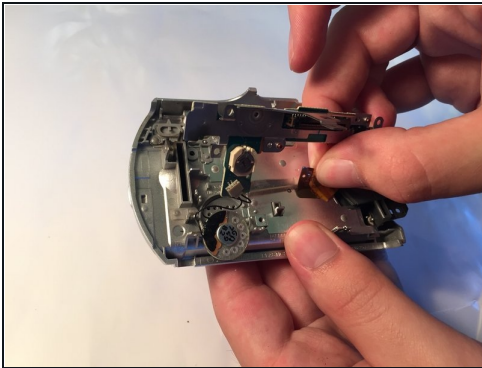
- Carefully pry the screen assembly apart from the main body of the camera.
 - Unplug the flex cable from the screen assembly.
- ⓘ Even with all the screws removed, this part will require some force to remove.

Step 14 — Flex Cable



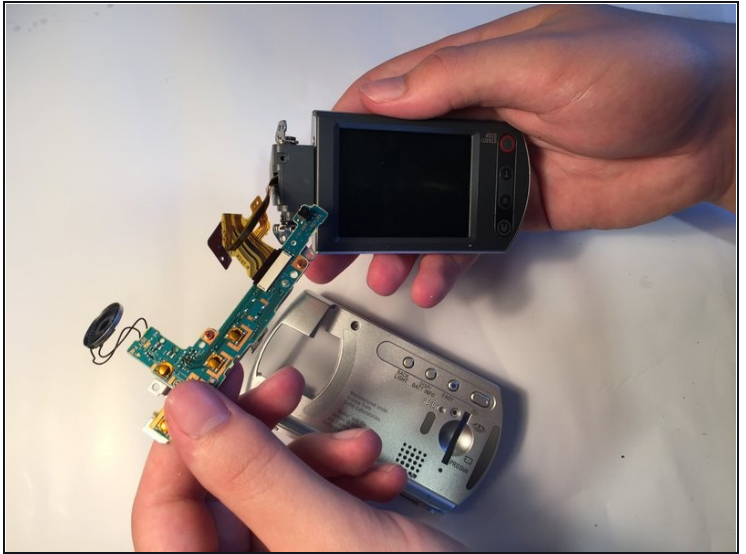
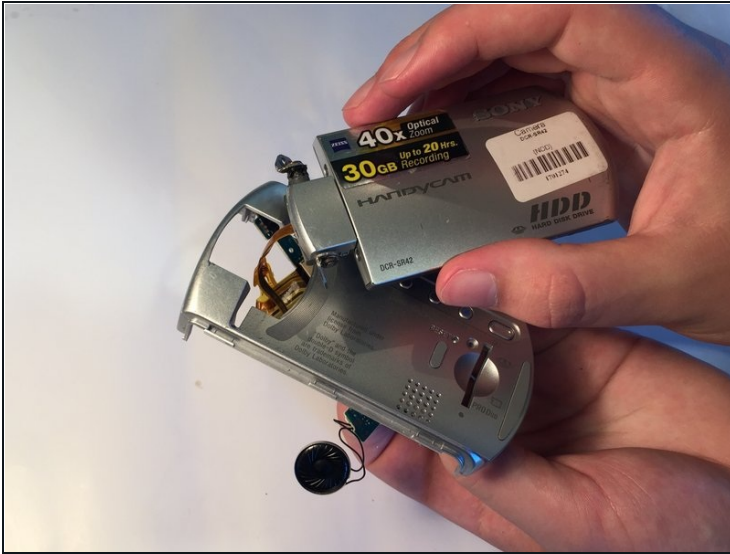
- Remove the 5 3mm Phillips #00 Screws from the screen assembly.

Step 15



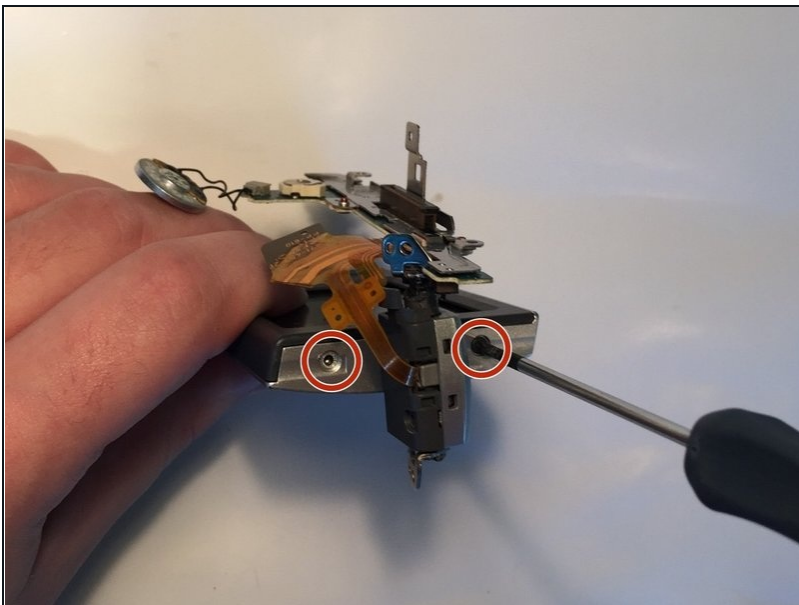
- Carefully lift up the sound chip and peel the flex cable off the screen case.
- Lift off the plastic bracket from the hinge.

Step 16



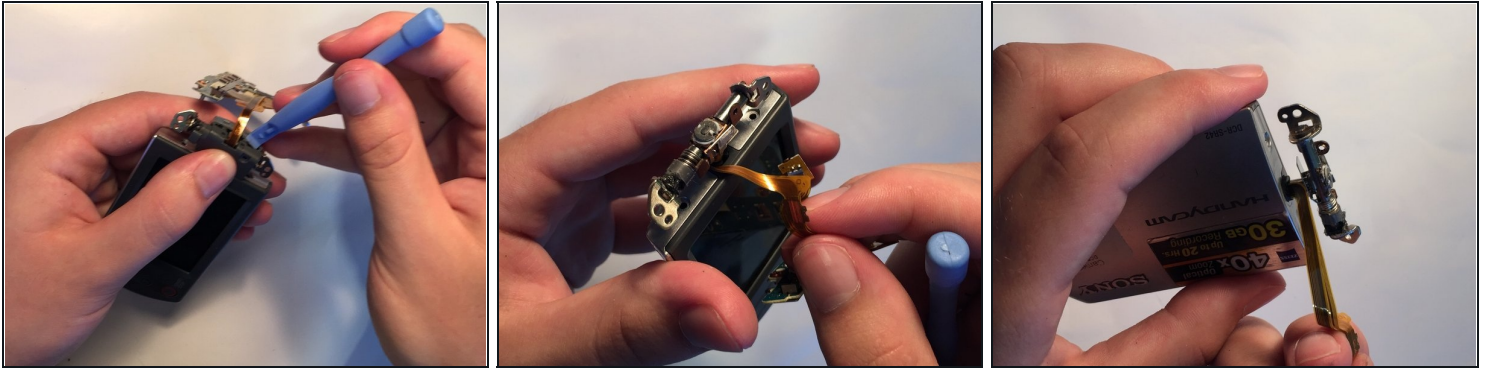
- Remove the screen from the plastic case by pulling the flex cable and sound chip through the hole in the case.

Step 17



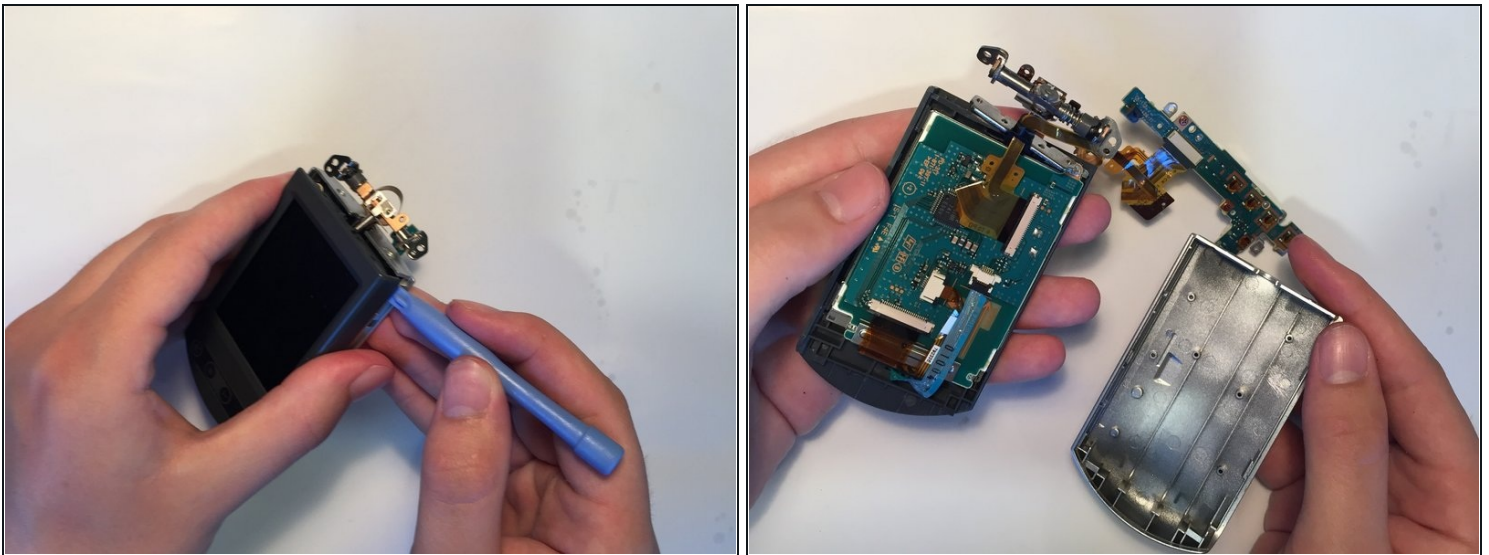
- Turn the hinge sideways and remove the two 4mm Phillips #00 screws from the side of the screen.

Step 18



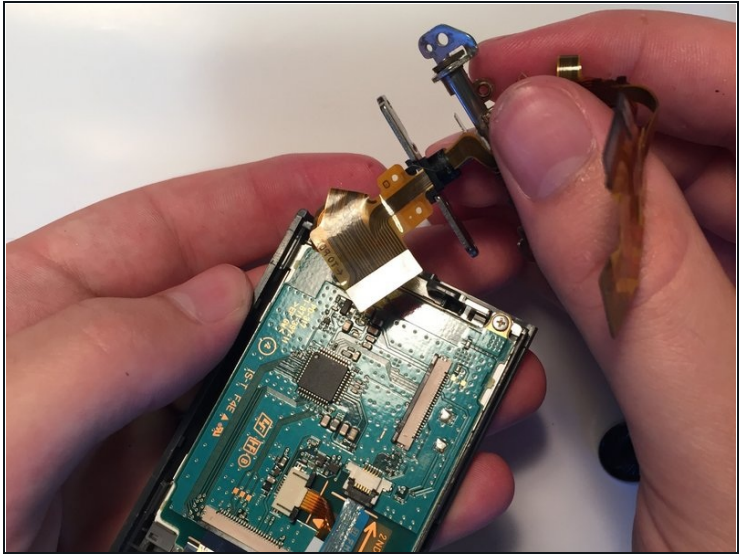
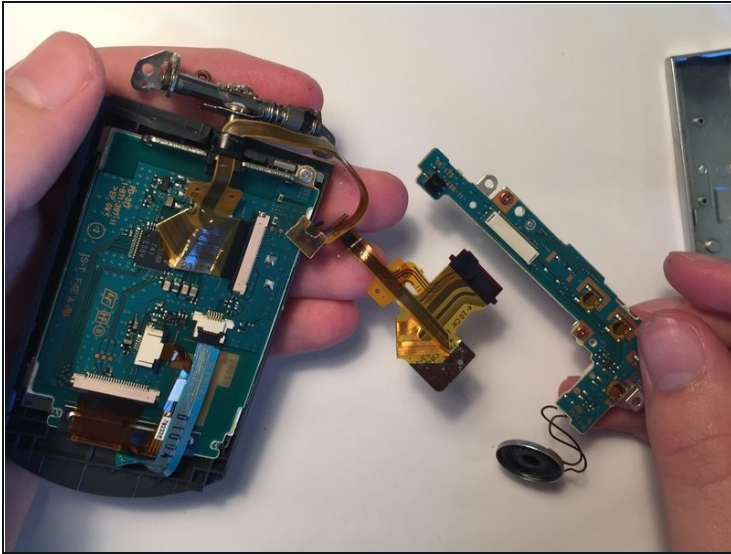
- Use the plastic opening tool to remove the plastic hinge covers and expose the metal hinge.
- Unwrap the flex cable from around the hinge.

Step 19



- Use the plastic opening tool to open the screen case.
- ⓘ Even with all the screws removed, this part will require some force to remove.

Step 20



- Unplug the flex cable from the sound chip.
 - Unplug the flex cable from the screen chip.
-

To reassemble your device, follow these instructions in reverse order.