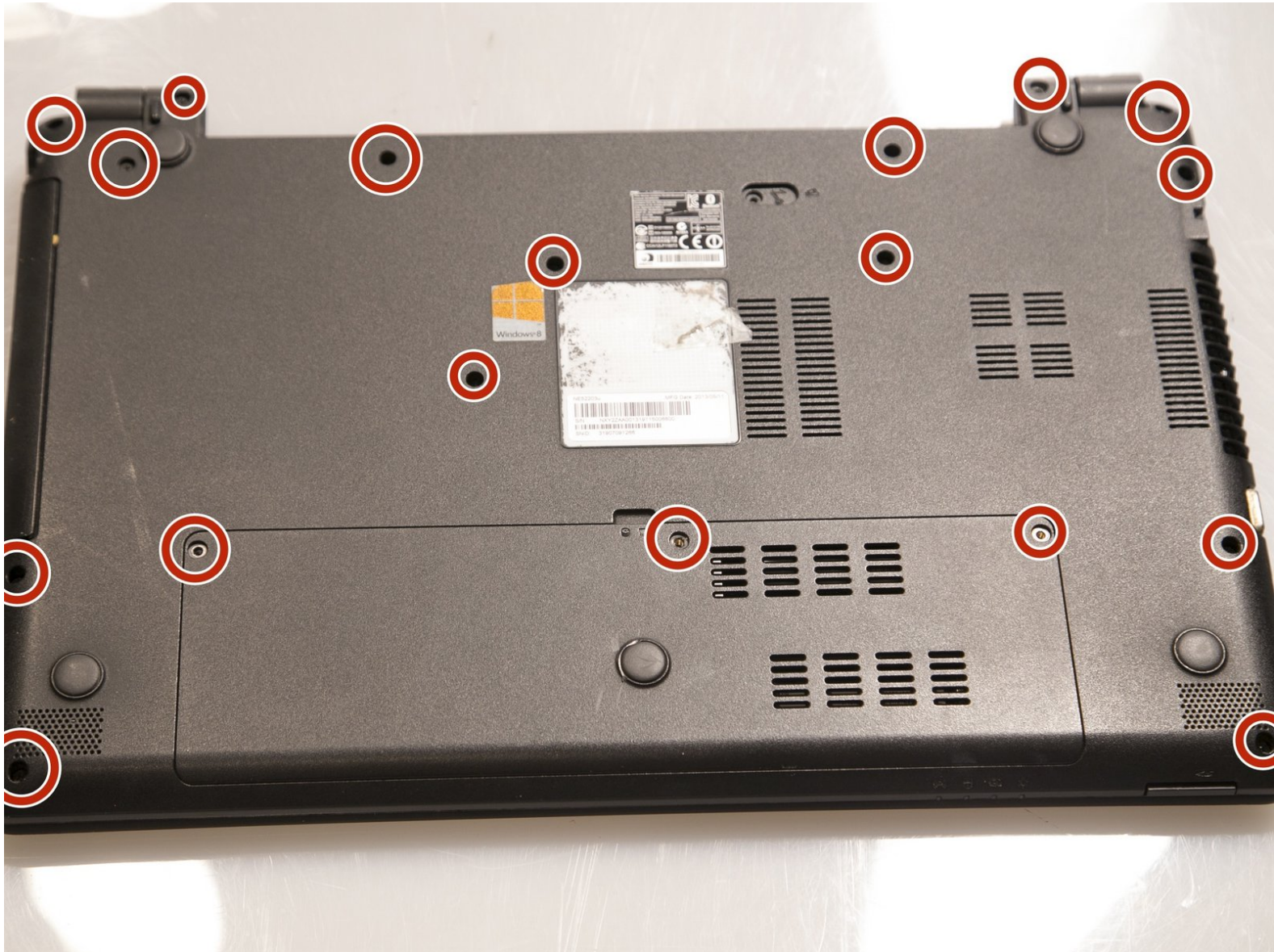




# Gateway NE52203u Touchpad Assembly Replacement

Prerequisite Only

Written By: Stephen Spees



---

## INTRODUCTION

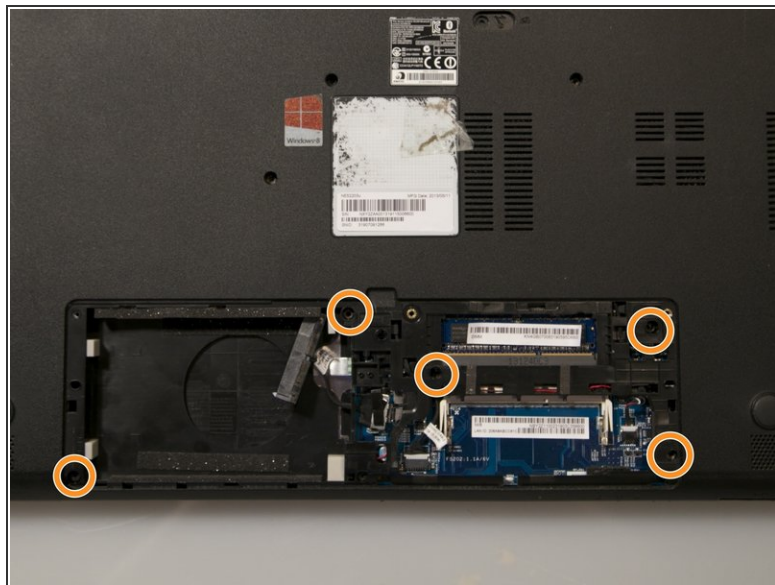
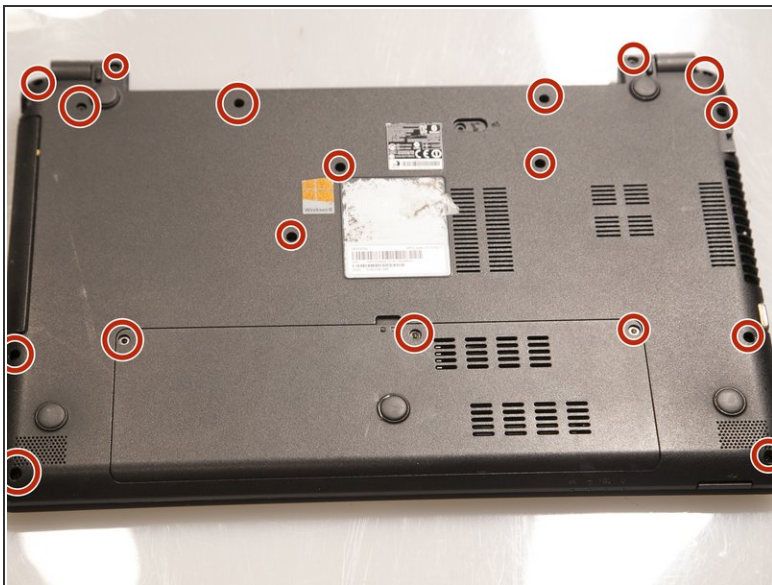
This is a prerequisite guide to instruct you on how to open up your laptop in order to access the motherboard.

---

### TOOLS:

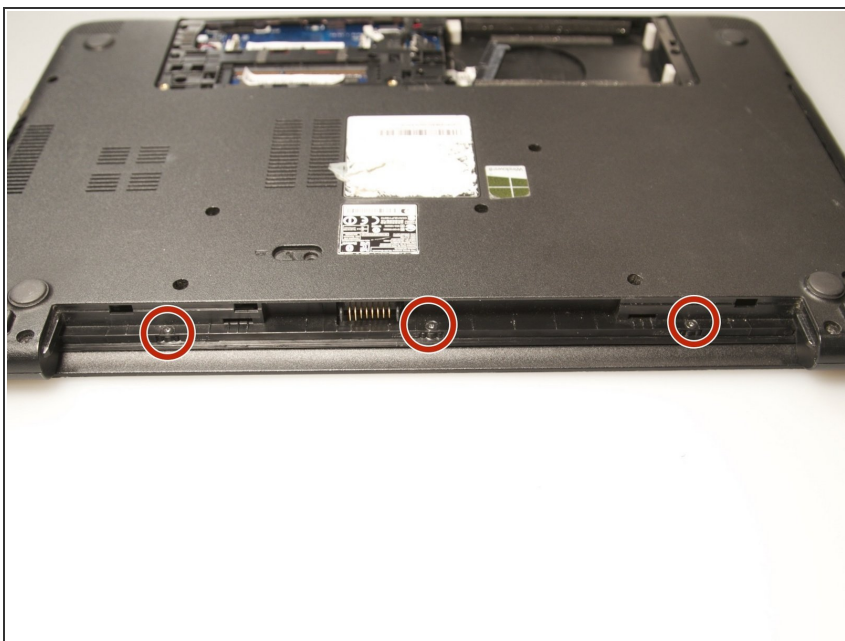
- [Phillips #00 Screwdriver](#) (1)
  - [iFixit Opening Tools](#) (1)
  - [Spudger](#) (1)
  - [Tweezers](#) (1)
-

## Step 1 — Touchpad Assembly



- Remove 18 6.0 mm Phillips #00 screws from the bottom of the laptop.
- Remove 5 6.0 mm Phillip #00 screws from under cover.

## Step 2



- Remove three 2.9 mm Phillips #00 screws from the battery compartment.

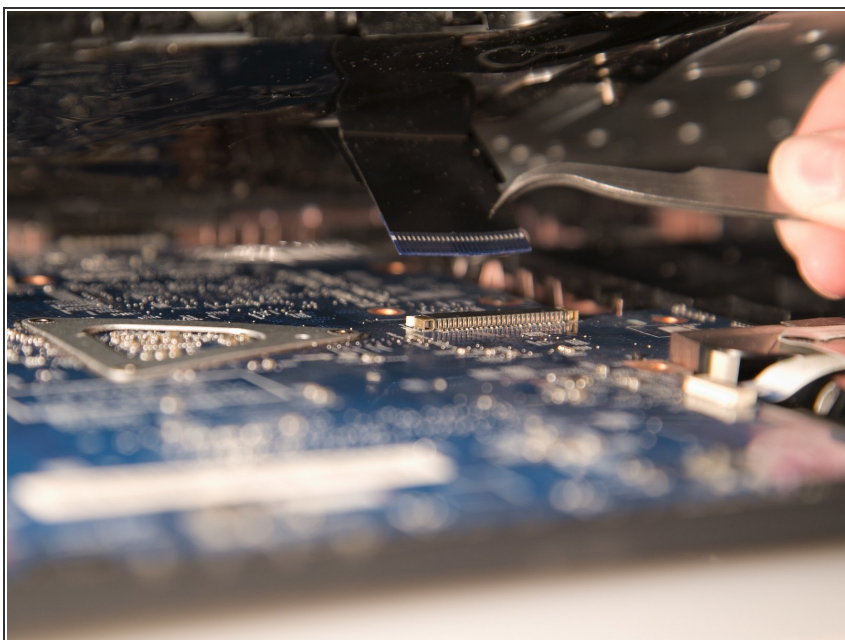


### Step 3



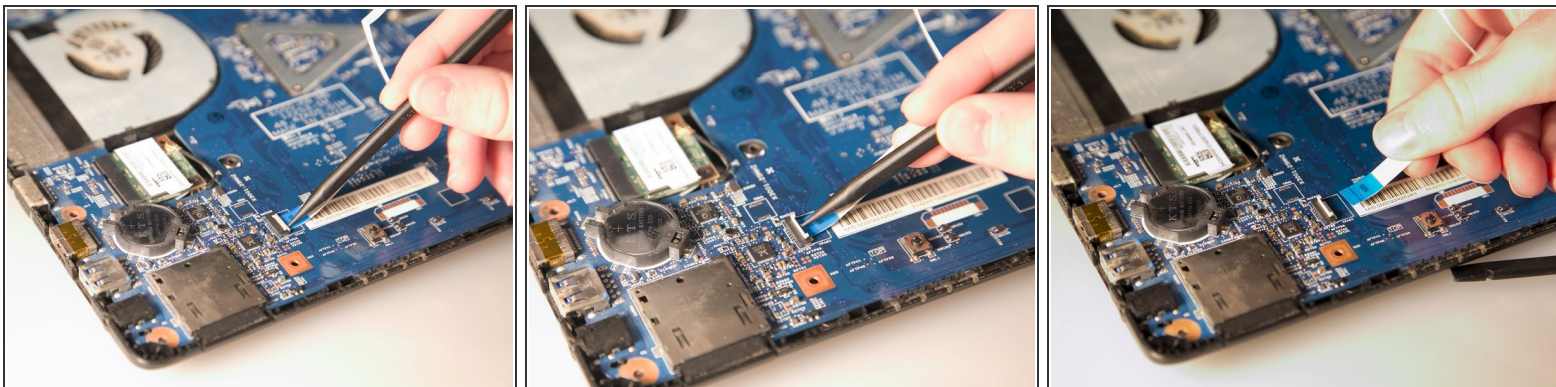
- Separate the bottom panel from the touchpad assembly by inserting a plastic opening tool between them on all four sides.

### Step 4



- Pull black ribbon wire from port using tweezers in order to completely separate touchpad assembly from bottom assembly.

## Step 5



- Disconnect the two ZIF ports that attach the touchpad assembly to the motherboard.
- First flip open the flap covering the ribbon using a spudger or fingernail.
- Second gently pull the ribbon away from the port.

To reassemble your device, follow these instructions in reverse order.