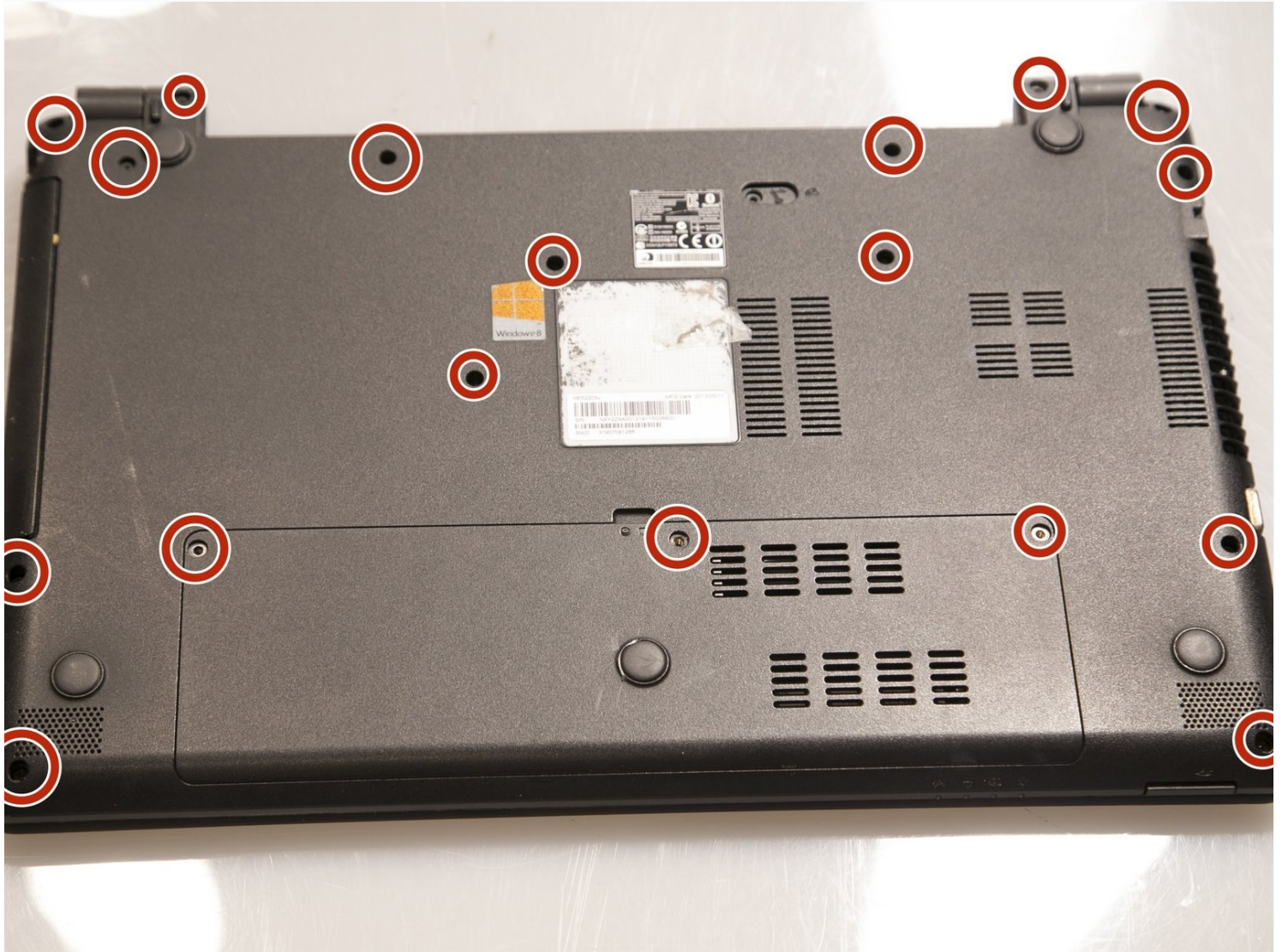




Gateway NE52203u Touchpad Assembly Replacement

This is a prerequisite guide to instruct you on...

Written By: Stephen Spees



INTRODUCTION

This is a prerequisite guide to instruct you on how to open up your laptop in order to access the motherboard.

TOOLS:

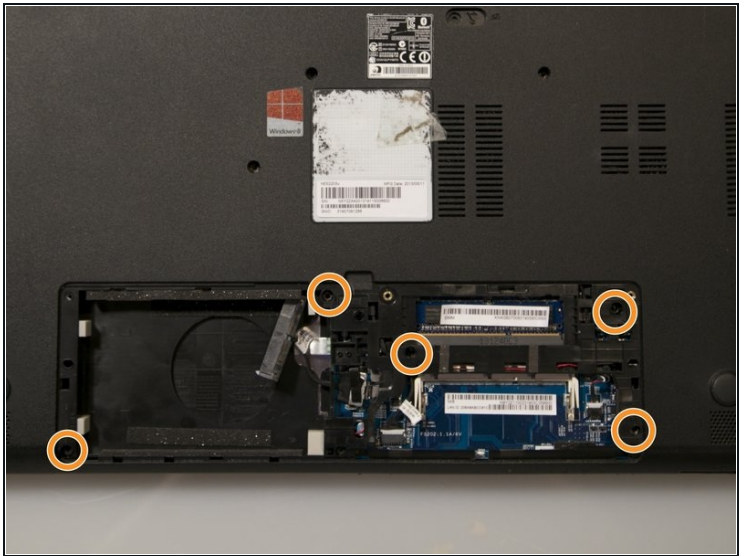
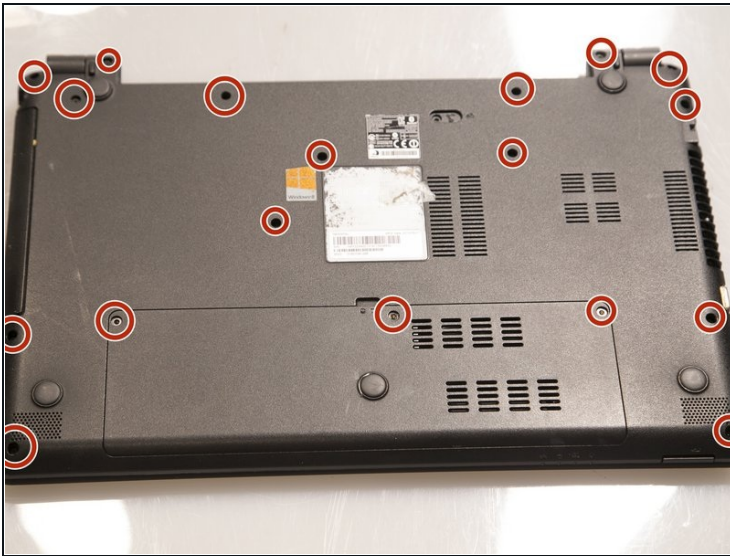
Phillips #00 Screwdriver (1)

iFixit Opening Tool (1)

Spudger (1)

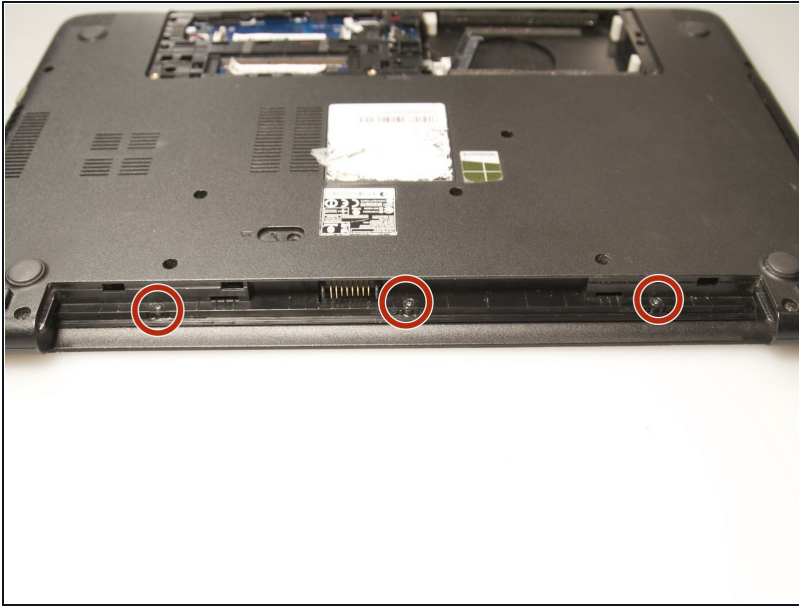
Tweezers (1)

Step 1 — Touchpad Assembly



- Remove 18 6.0 mm Phillips #00 screws from the bottom of the laptop.
- Remove 5 6.0 mm Phillip #00 screws from under cover.

Step 2



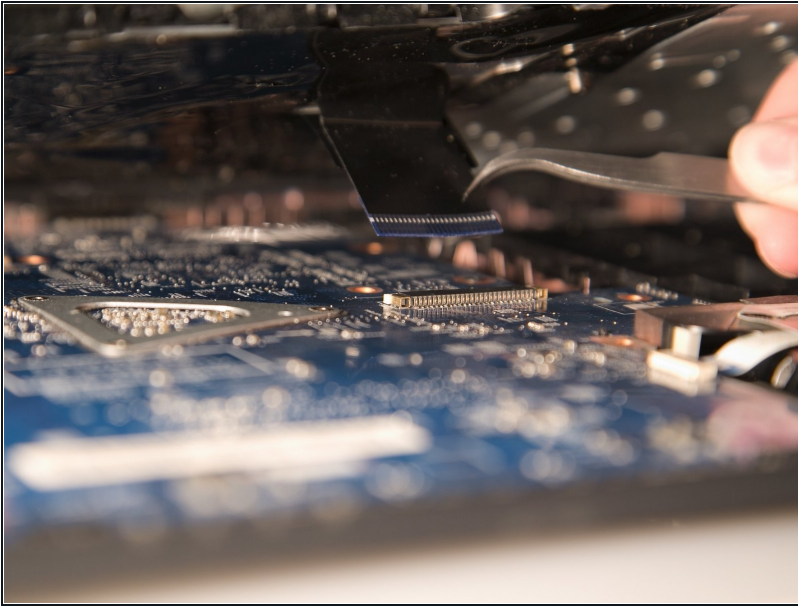
- Remove three 2.9 mm Phillips #00 screws from the battery compartment.

Step 3



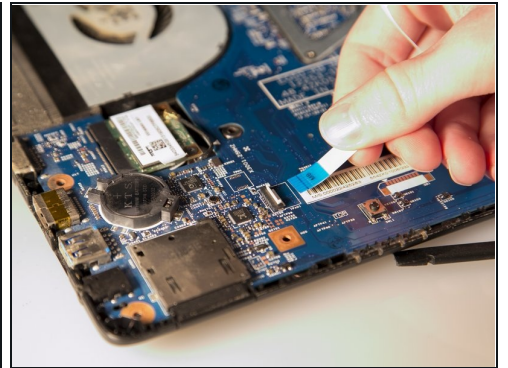
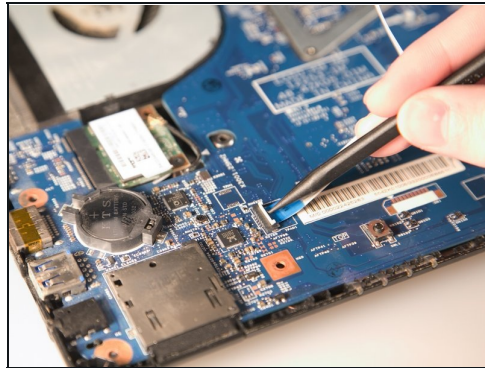
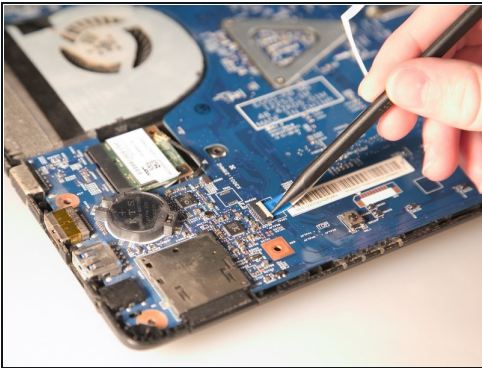
- Separate the bottom panel from the touchpad assembly by inserting a plastic opening tool between them on all four sides.

Step 4



- Pull black ribbon wire from port using [tweezers](#) in order to completely separate touchpad assembly from bottom assembly.

Step 5



- Disconnect the two ZIF ports that attach the touchpad assembly to the motherboard.
- First flip open the flap covering the ribbon using a spudger or fingernail.
- Second gently pull the ribbon away from the port.

To reassemble your device, follow these instructions in reverse order.