



Disassembling Olympus Stylus Tough-8010

Camera Casing

This guide will show you how to take off the camera's casing to replace important parts

Written By: Luke Visser



INTRODUCTION

Follow these instructions to learn how to remove the Olympus Stylus Tough-8010 camera's casing.



TOOLS:

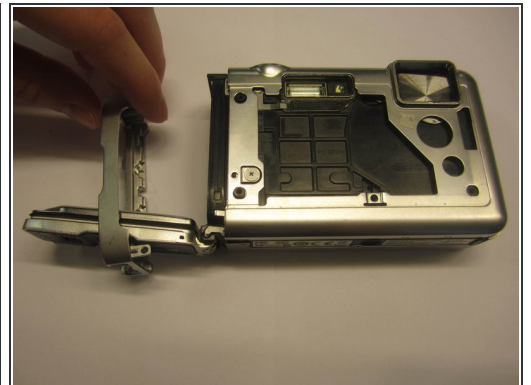
- [Phillips #000 Screwdriver](#) (1)
 - [Tweezers](#) (1)
 - [iFixit Opening Tools](#) (1)
-

Step 1 — Camera Casing



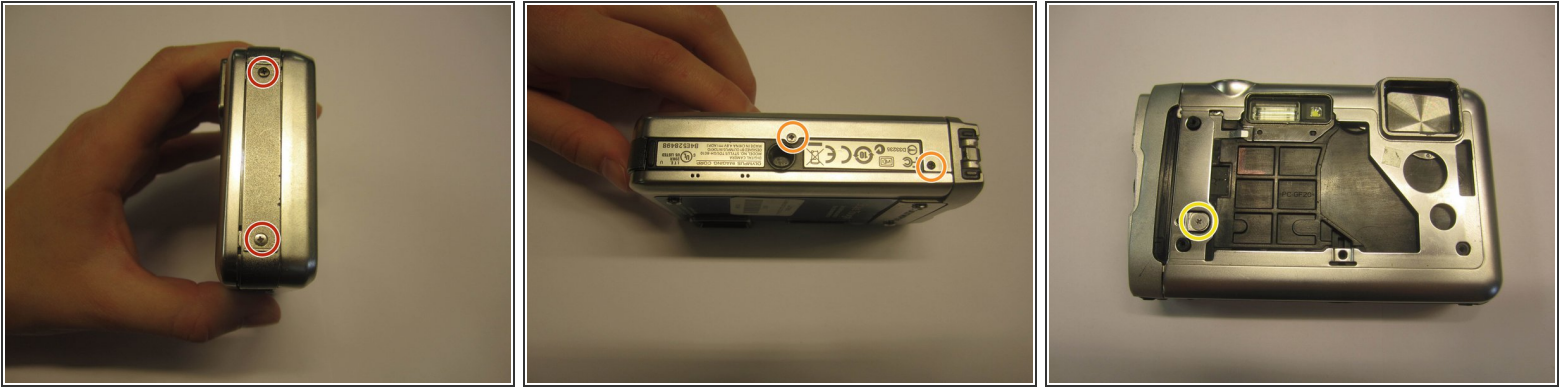
- Remove the front three screws (3.2mm) using a type T-6 head screwdriver.
- Take off smaller front cover.
- Carefully remove larger front cover.

Step 2



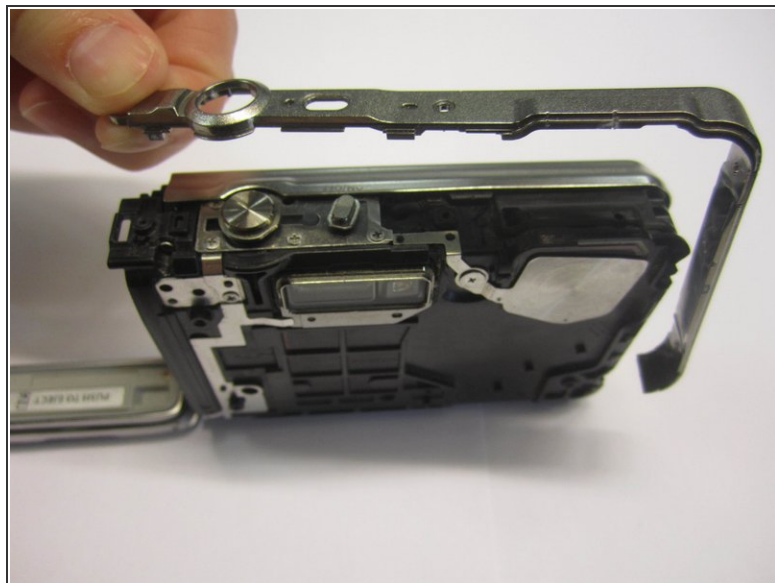
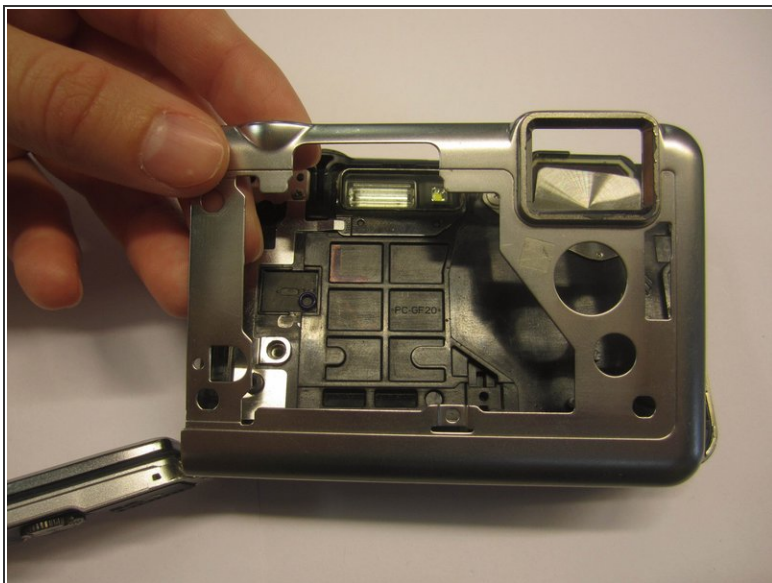
- Remove two screws (4.1mm) on the top of the camera using a #000 Phillips head screwdriver.
 - Using a #000 Phillips head screwdriver remove two screws (7.9mm) near the control panel and set aside the metal connector.
- ⚠ Although the third photo shows the side panel casing being removed, it is normally secured by a screw under the front framework. You'll need to follow the next two steps to remove the framework and access the screw before you can remove the side casing as shown here.

Step 3



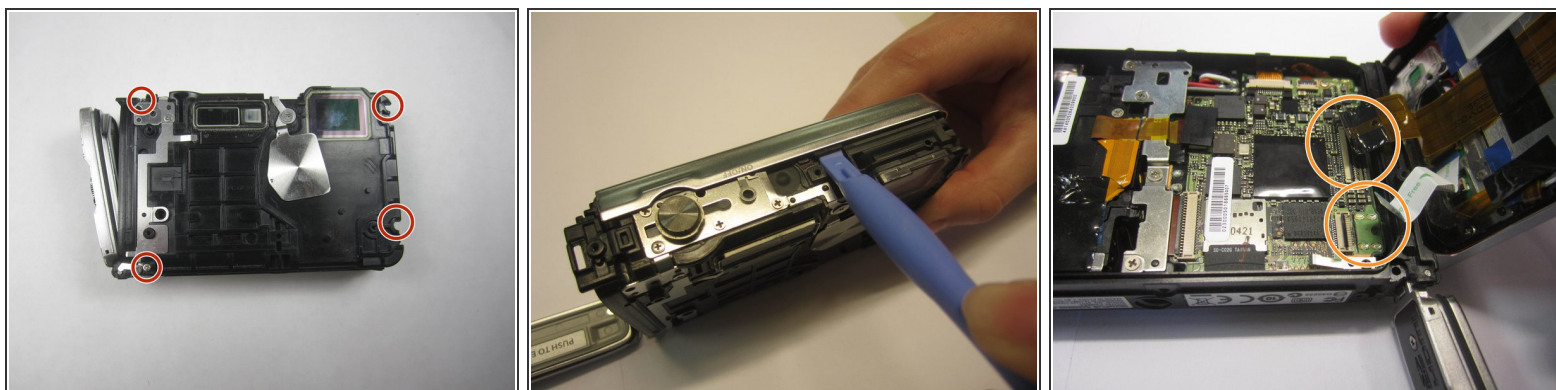
- Using a #000 Philips head screwdriver remove the two screws (4.1mm) on the right side of the camera.
- Remove two screws (4.1mm) on the bottom of the camera using a #000 head Phillips screwdriver.
- Remove the single screw (3.2mm) on the front of the camera using a #000 Phillips head.

Step 4



- Carefully remove the front panel piece from the rest of the camera.
- Carefully remove the top/side plastic piece.
- ⓘ If the camera and flash buttons fall out of their slots set them aside.
- If you haven't already done so, remove the side casing as mentioned in Step 3. It is secured by a single screw near the bottom corner.

Step 5



- Remove four screws (9.4mm) on the front of the camera using a Phillips #000
- Use the plastic opening tool to release the holding clip.
- Using tweezers separate the plastic strips from their connectors located on the main circuit board by lifting the small, black flaps on the connectors and pulling on the ribbons.

To reassemble your device, follow these instructions in reverse order.