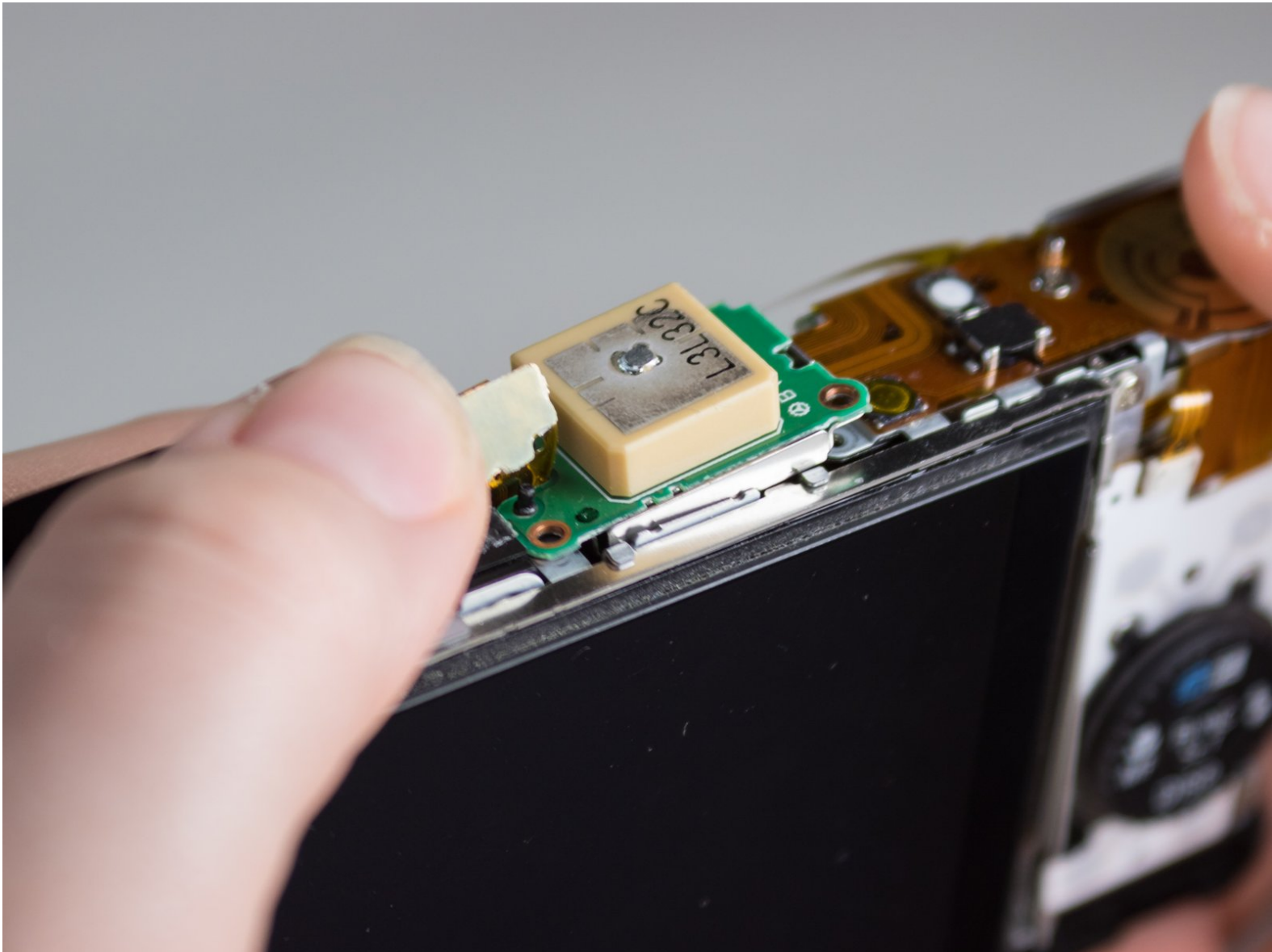




Canon PowerShot S100 GPS Board Replacement

This guide demonstrates how to remove the GPS board from the camera.

Written By: Ricky



INTRODUCTION

This camera has a GPS that tracks where pictures have been taken. If the GPS board malfunctions, it can be removed and replaced.



TOOLS:

- [Phillips #00 Screwdriver](#) (1)
 - [Spudger](#) (1)
 - [Tweezers](#) (1)
-

Step 1 — Outer Case



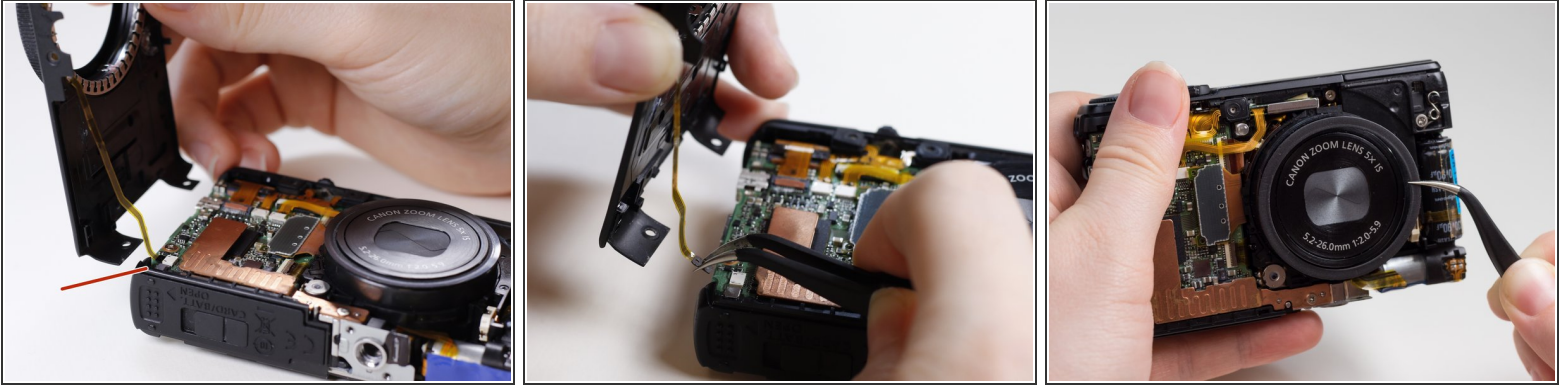
- Remove the 2 screws (3.2mm, Phillips #00) found on the bottom side of the camera.
- Remove the 2 screws (3.2mm, Phillips #00) found on the side of the camera.
- Remove the 2 screws (3.2mm, Phillips #00) found on the side of the camera where the terminals are.
- Open the flap revealing the cable inputs and remove the final screw (3.8mm, Phillips #00) found inside.

Step 2



- Turn the camera so that the LCD screen is facing you.
- Remove the back panel by pulling it off of the camera.

Step 3



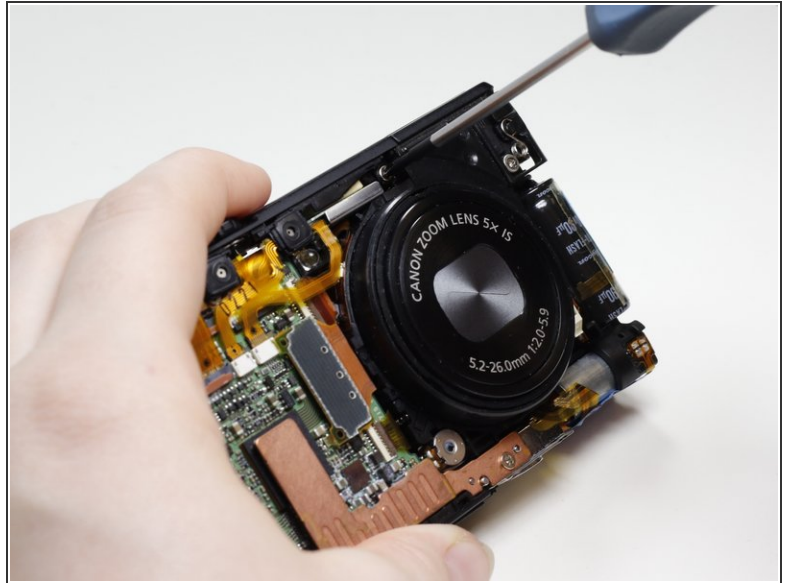
- Turn the camera so that the lens is facing you.
 - ⚠ Do not pull the front panel off without removing the ribbon cable first.
- Slowly lift the front panel from the camera.
- The ribbon cable is connecting the front panel to the camera. Using the tweezers, gently pull the ribbon cable out of its socket.
 - ⓘ A spudger may also be used to remove the ribbon cable.
- Remove the rubber guard that rests on top of the lens.

Step 4 — Top Panel



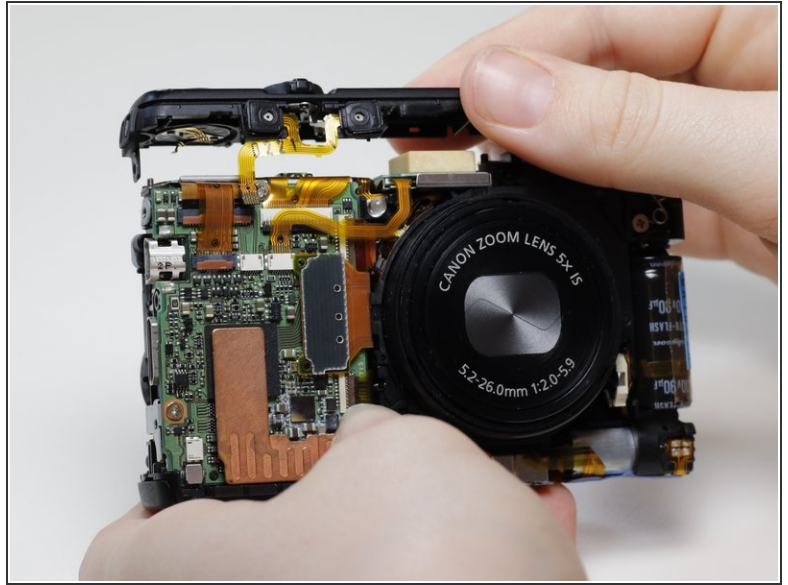
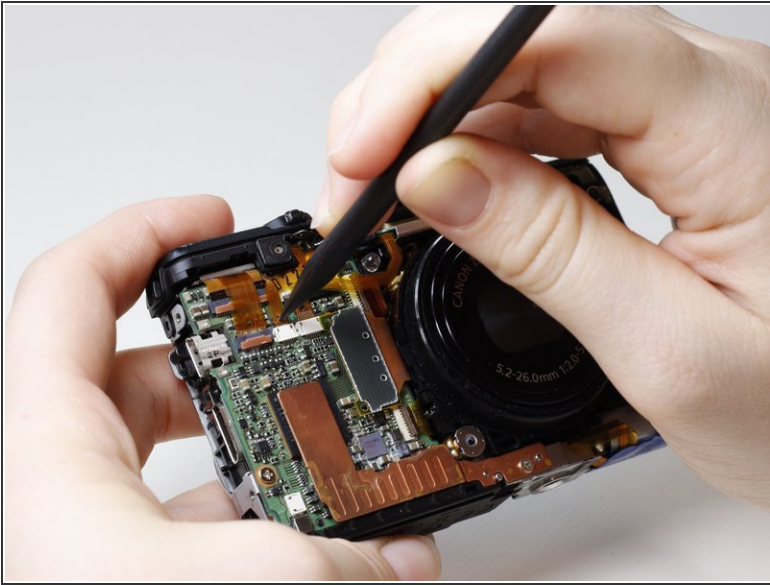
- Turn the camera over on its side so that the terminals are facing you.
- Remove the screw (3.9mm, Phillips #00) that is connecting the top panel to the metal frame.

Step 5



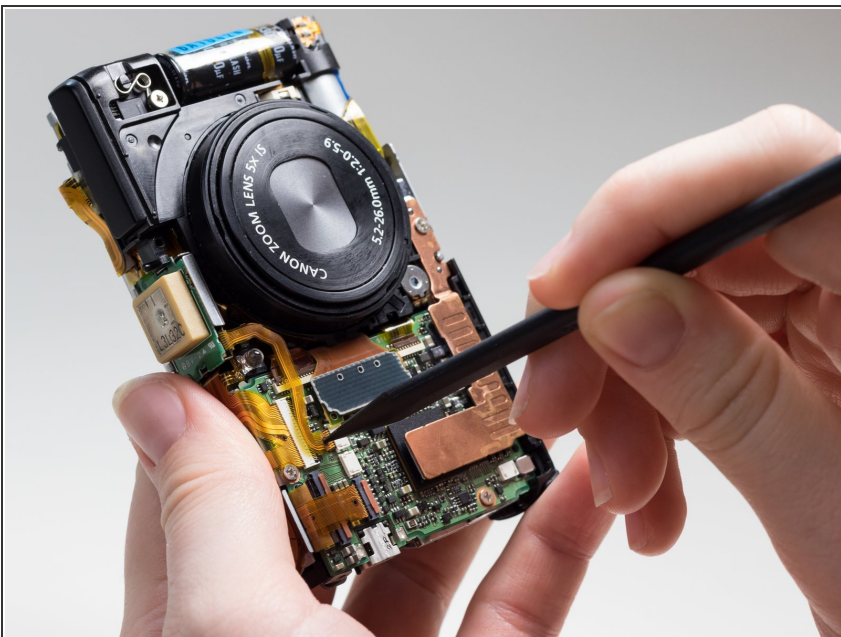
- Turn the camera so that the lens is facing you.
- Remove the screw (2.9mm, Phillips #00) that is directly above the camera lens.

Step 6



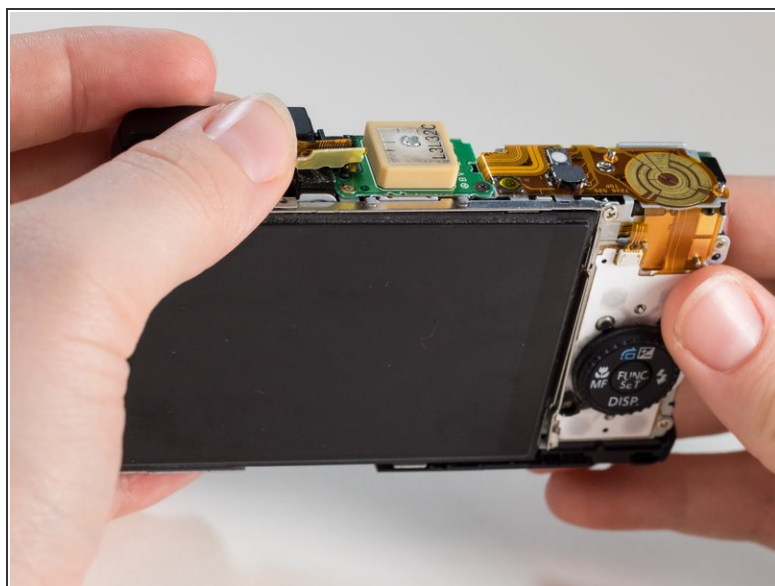
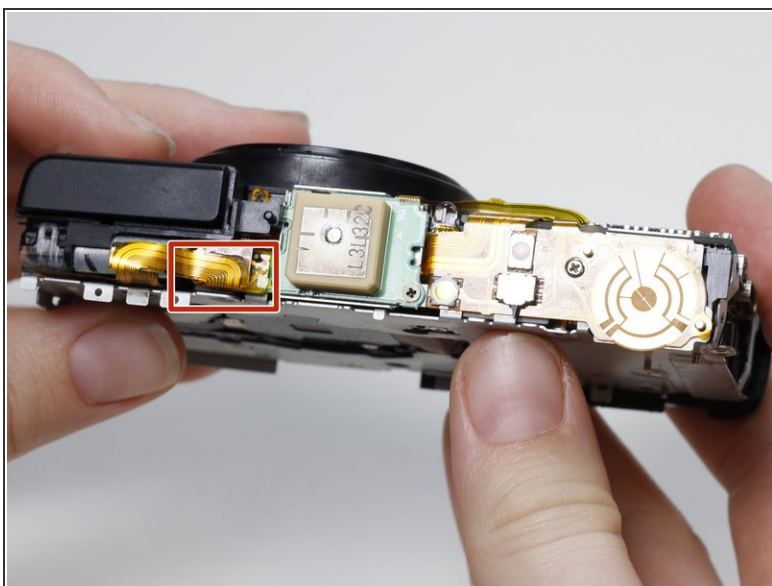
- Using the spudger, remove the center ribbon cable that is connecting the top panel to the motherboard.
- Gently lift the top panel off the camera.
 - ⓘ Tweezers may also be used to remove the ribbon cable.

Step 7 — GPS Board



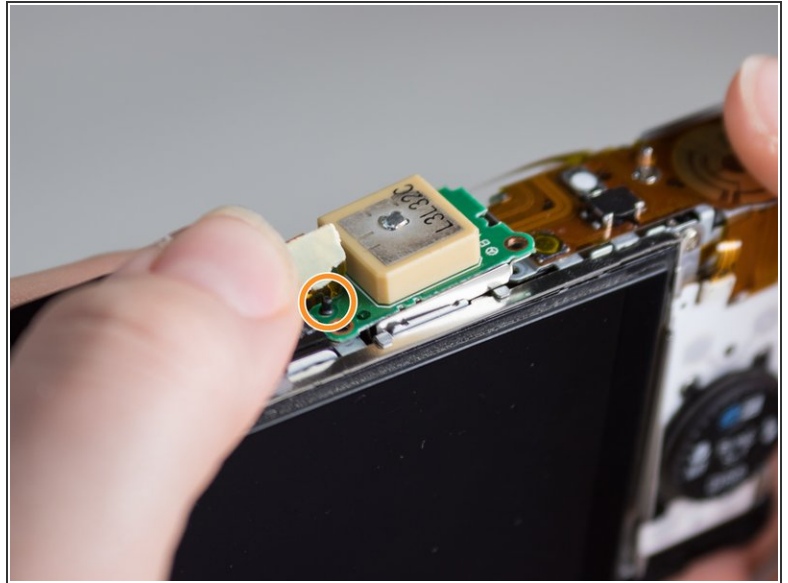
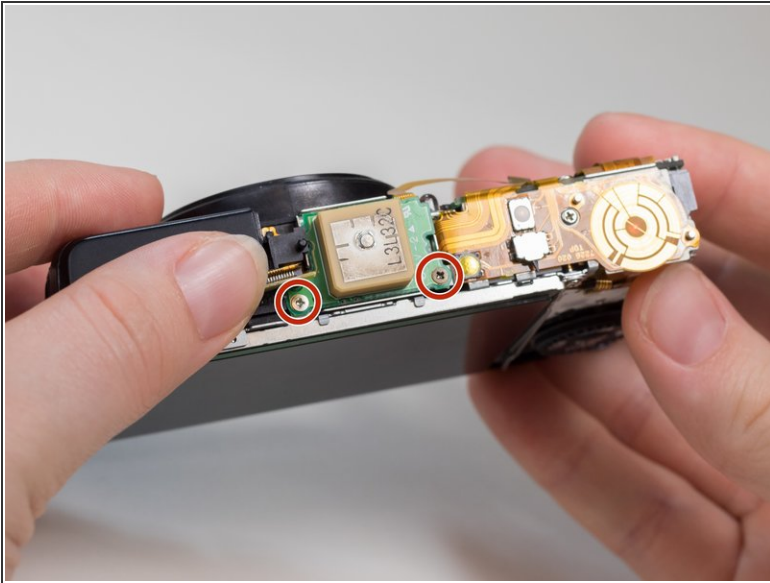
- Turn the camera over so that the camera lens is facing you.
- Using the spudger, detach the ribbon cable that is connecting the GPS tracker to the motherboard.
 - ⓘ Tweezers may also be used to remove the ribbon cable.

Step 8



- Turn the camera over so that the top edge is facing you, and the lens is away from you.
- Gently lift the folded ribbon cable piece off of the camera body.
- ⓘ The folded ribbon cable piece is glued onto the camera, so removing it will require minimal force.

Step 9



- Lift to expose the Phillips #00 screw located beneath it.
- Unscrew the 2 screws (4.1mm, 1.8mm, both Phillips #00) connecting the GPS tracker to the camera.
- Remove the GPS tracker by gently lifting it off of the pin that holds it to the top of the camera.

To reassemble your device, follow these instructions in reverse order.