



Canon PowerShot S100 Top Panel Replacement

The top panel of the camera grants access to...

Written By: Ricky



INTRODUCTION

The top panel of the camera grants access to the shutter button and the rotating dial. Removing the top panel is also necessary to access and remove other internal parts.

TOOLS:

Phillips #00 Screwdriver (1)

Tweezers (1)

Spudger (1)

Step 1 — Outer Case



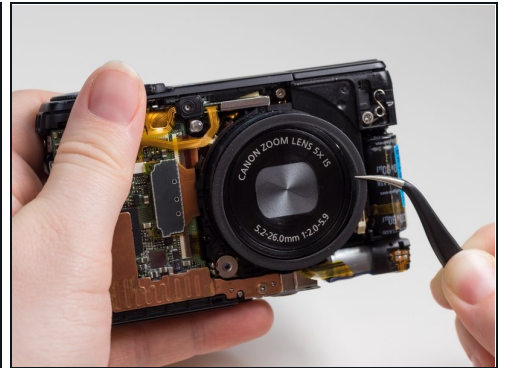
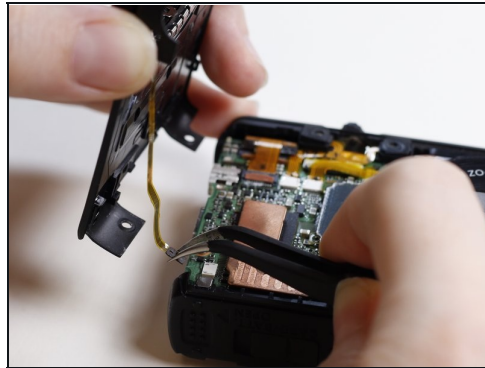
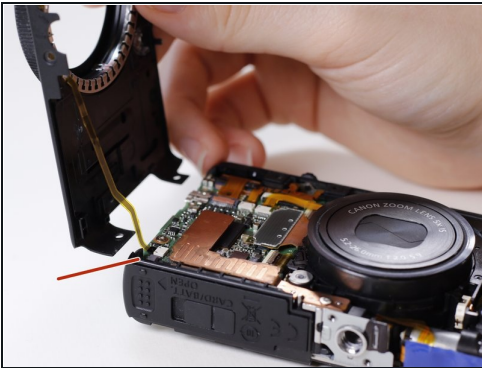
- Remove the 2 screws (3.2mm, Phillips #00) found on the bottom side of the camera.
- Remove the 2 screws (3.2mm, Phillips #00) found on the side of the camera.
- Remove the 2 screws (3.2mm, Phillips #00) found on the side of the camera where the terminals are.
- Open the flap revealing the cable inputs and remove the final screw (3.8mm, Phillips #00) found inside.

Step 2



- Turn the camera so that the LCD screen is facing you.
- Remove the back panel by pulling it off of the camera.

Step 3



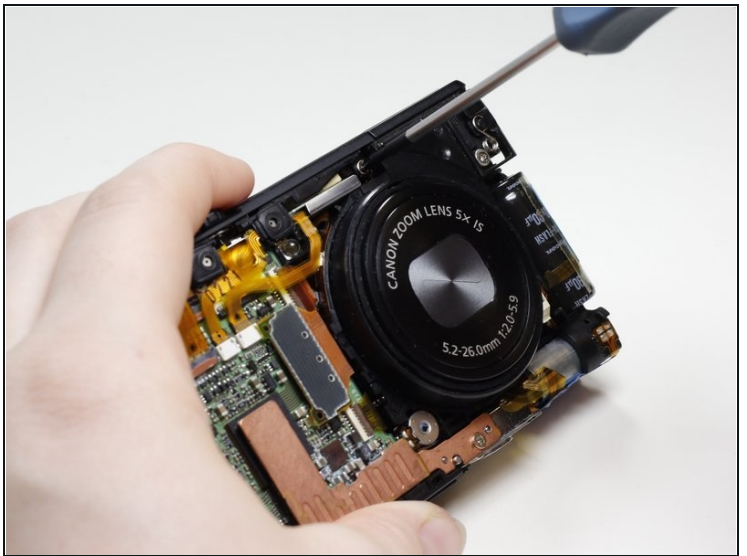
- Turn the camera so that the lens is facing you.
 - ⚠ Do not pull the front panel off without removing the ribbon cable first.
- Slowly lift the front panel from the camera.
- The ribbon cable is connecting the front panel to the camera. Using the [tweezers](#), gently pull the ribbon cable out of its socket.
 - ⓘ A spudger may also be used to remove the ribbon cable.
- Remove the rubber guard that rests on top of the lens.

Step 4 — Top Panel



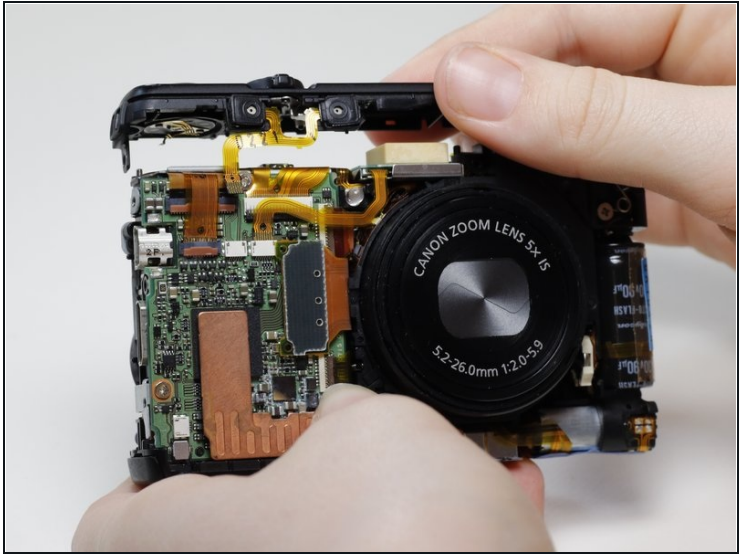
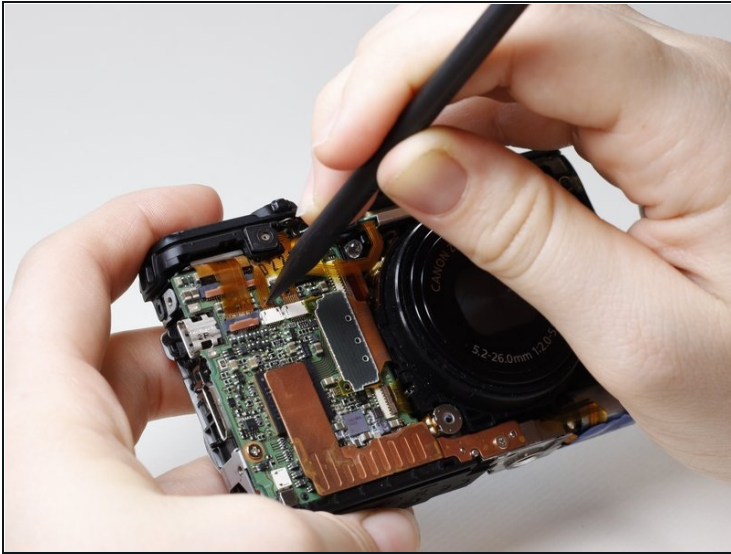
- Turn the camera over on its side so that the terminals are facing you.
- Remove the screw (3.9mm, Phillips #00) that is connecting the top panel to the metal frame.

Step 5



- Turn the camera so that the lens is facing you.
- Remove the screw (2.9mm, Phillips #00) that is directly above the camera lens.

Step 6



- Using the spudger, remove the center ribbon cable that is connecting the top panel to the motherboard.
- Gently lift the top panel off the camera.
 - ① [Tweezers](#) may also be used to remove the ribbon cable.

To reassemble your device, follow these instructions in reverse order.