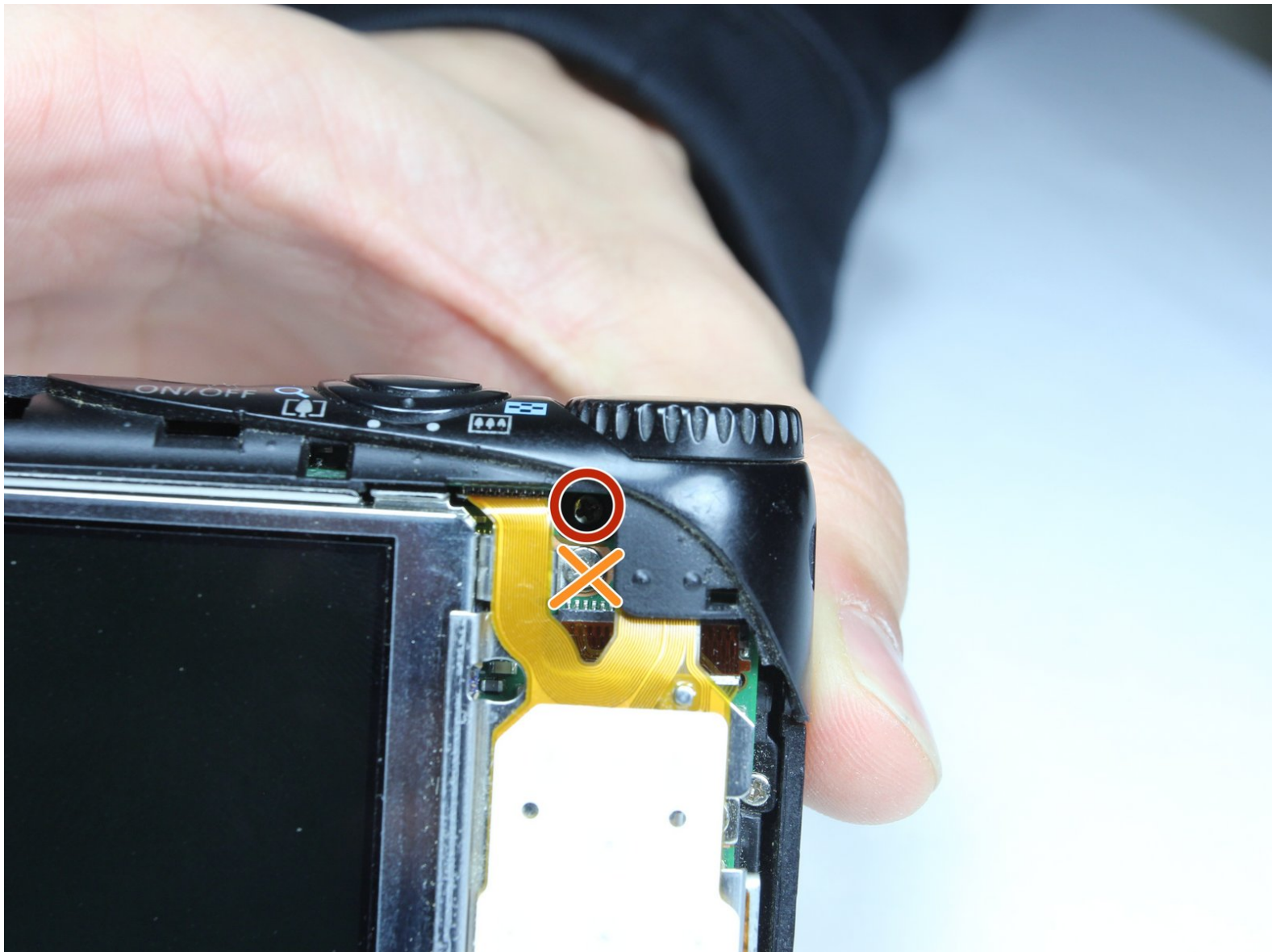




Canon PowerShot A2200 Button Assembly Replacement

This guide will show you how to remove the general buttons for replacement. These buttons include the power button, shutter button, and shooting mode dial.

Written By: Benjamin Gee



INTRODUCTION

This guide requires that you use a Phillips head screwdriver to remove the screws holding the buttons in place.



TOOLS:

- [Magnetic Project Mat](#) (1)
 - [Phillips #00 Screwdriver](#) (1)
 - [iFixit Opening Tools](#) (1)
-

Step 1 — Back Cover



- First, remove the batteries and memory card.
- Remove the 5.0 mm black screw with a Phillips #00 screwdriver.
- Remove the 5.0 mm silver screw with a Phillips #00 screwdriver.

Step 2



- Remove the 5.0 mm black screw on the right with a Phillips #00 screwdriver.

Step 3



- Remove the 5.0 mm screw on the left with a Phillips #00 screwdriver.

Step 4



- Begin taking off the back cover with a plastic opening tool.
- Begin by wedging the plastic opening tool behind the bottom left corner of the LCD screen as shown.
- Slide the plastic opening tool to the right, along the mating edge, to pry off the back cover.
- Continue taking off the back cover along the left side of the camera as seen in the third picture.

Step 5



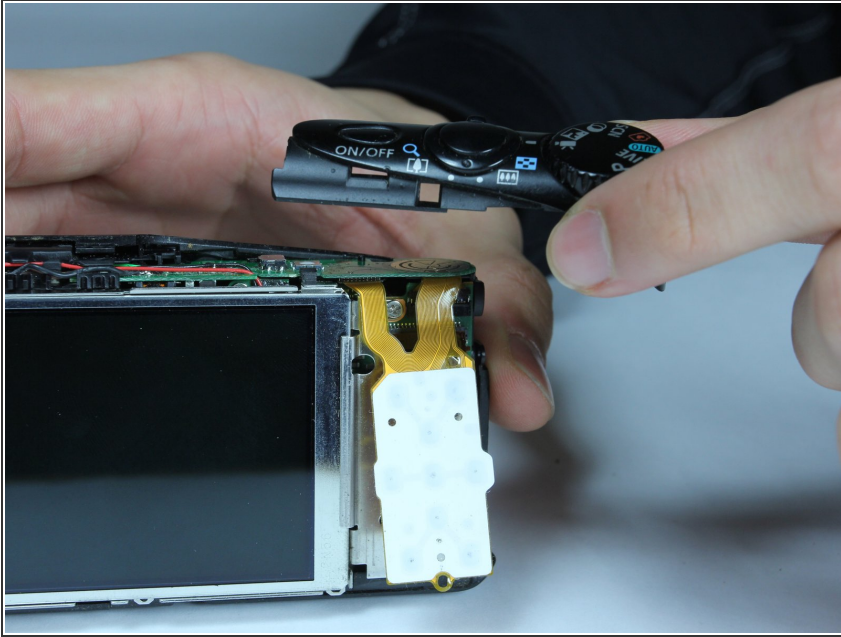
- Use the plastic opening tool to separate the top section of the back cover from the frame.
- Once there is enough separation between the back cover and the frame, remove the back cover for replacement.

Step 6 — Button Assembly



- Remove the internal 4.4mm screw with a Phillips 00 screwdriver.
- ⓘ Make sure you're removing the screw circled in red, not the screw crossed out in orange.

Step 7



- Gently lift of the buttons for replacement. They should come off without excessive force.
- If the buttons do not lift off easily, you may have unscrewed the wrong screw. Revert to previous step.

To reassemble your device, follow these instructions in reverse order.