



Breville Dual Boiler (BES900/BES900XL) Group Head Collar Insert Replacement Guide

As a result of a poor seal and coffee spurting from your group head this guide will assist you in replacing the collar insert inside the group head to recreate that perfect seal again.

Written By: stihl888



INTRODUCTION

After time the plastic insert inside the group head can wear out or break which will result in a poor seal of your portafilter causing your coffee to spurt out of the group head. If you've replaced the seal in the group head and your still experiencing a leaky head then you've probably got a faulty collar in your group head which needs replacing.

TOOLS:

- [Phillips #2 Screwdriver](#) (1)
 - [T20 Torx Screwdriver](#) (1)
 - [Small Needle Nose Pliers](#) (1)
-

Step 1 — The Group Collar Insert



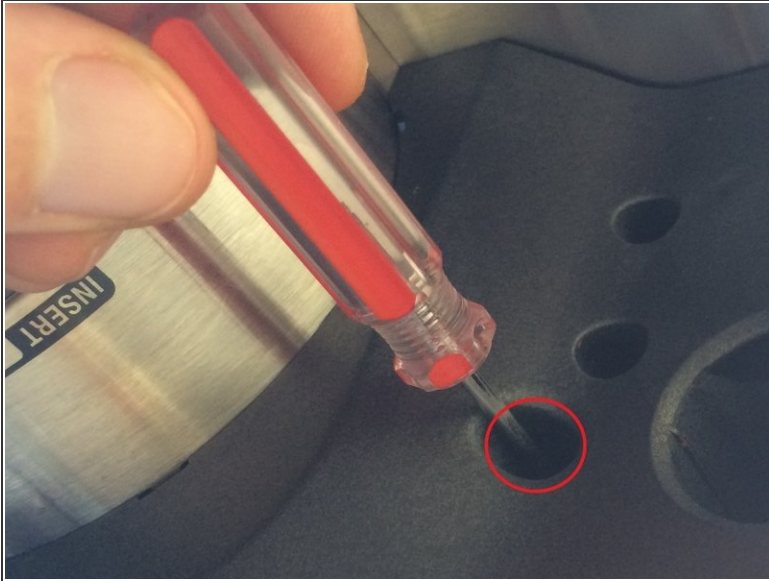
- There are 2 types of collars for the BES900/XL and the BES920/XL, they are both identical except the internal rim inside the collars vary in thickness, the one in the newer BES920/XL machines have the thicker rim which assists in the portafilter contacting the seal much sooner than the BES900/XL creating a tighter seal.
- Some 1st generation BES900/XL models had their whole group head, element and collar upgraded under warranty also.
- Ensure you purchase the correct collar for your machine.

Step 2 — Remove The Top & Rear Covers



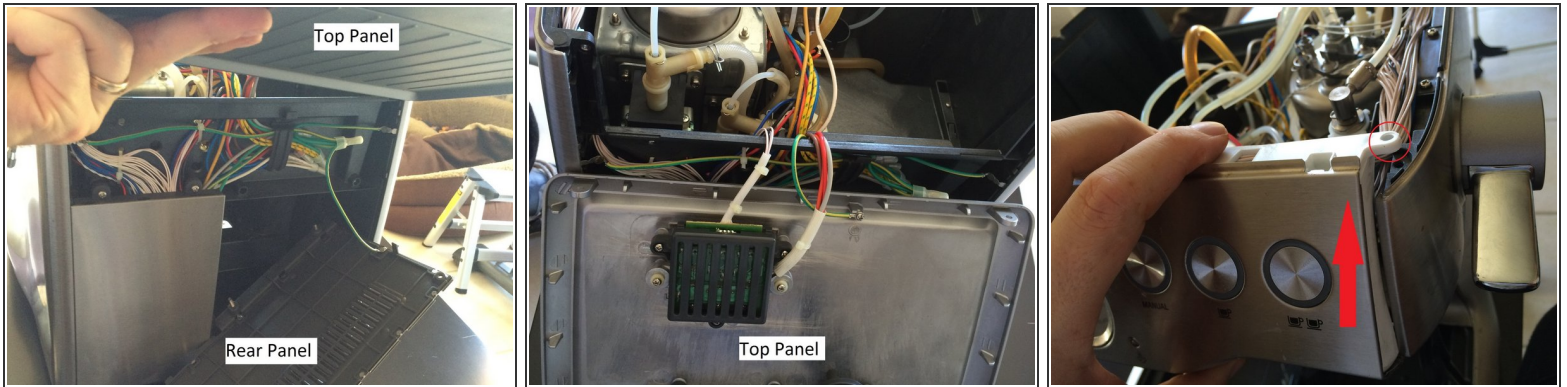
- Start by removing the water container from the rear of the machine, then unscrew the two T20 torx screws from the rear of the machine on the top of the rear panel
- Now remove the two phillips screws from the bottom of the rear panel, remembering that the longer screw is on the left and the shorter is on the right

Step 3 — Removing The Top Cover Continued...



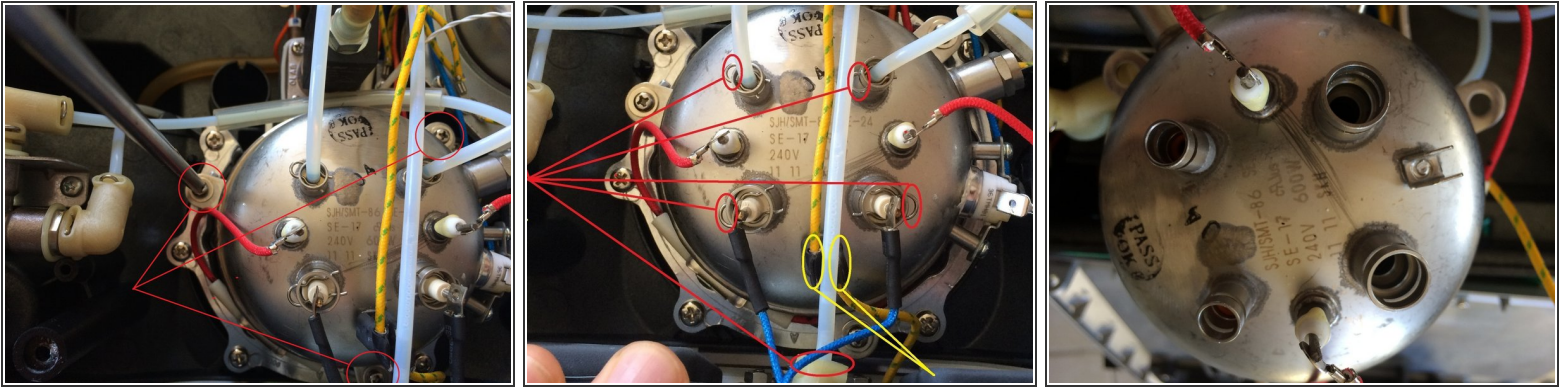
- Now turn the machine upside down on your workbench then use your screw driver remove the two phillips screws either side of the group head.
- These two screws are about 2cm in length and will likely fall out once you lift the top off the machine

Step 4 — Removing The Top Cover Continued & Front Panel Removal



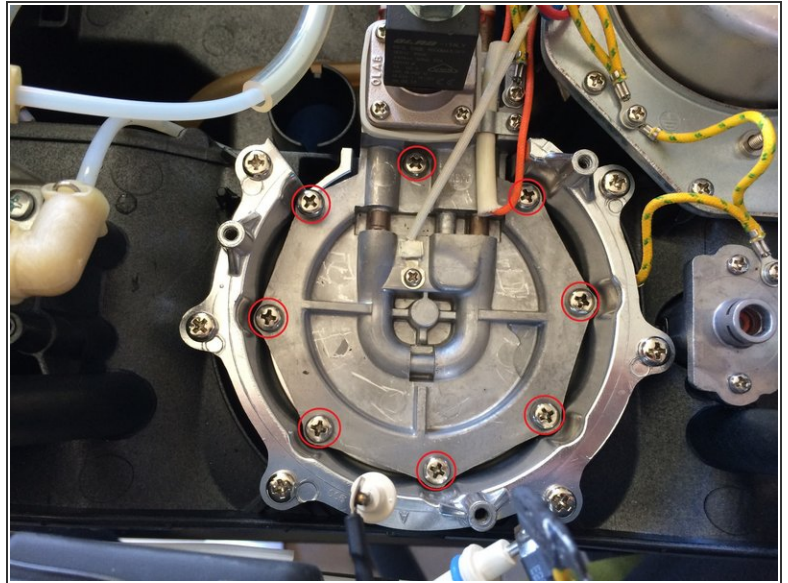
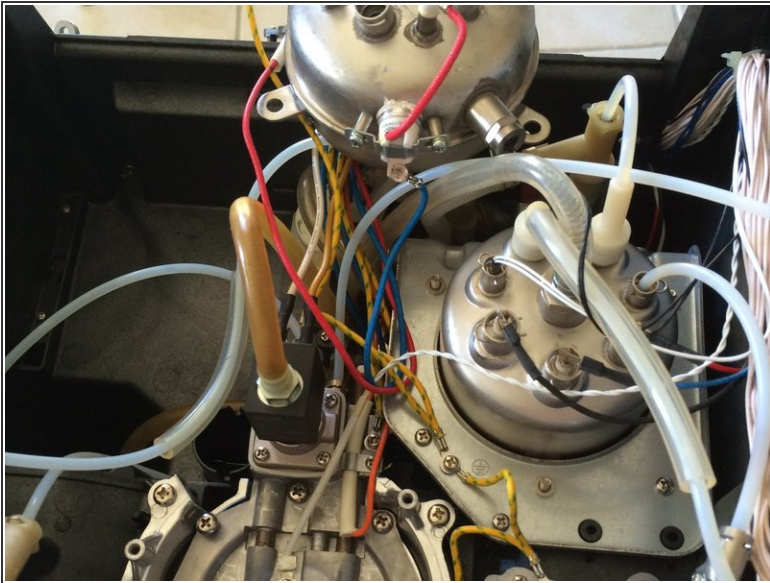
- After removing the four screws from the top cover, the lid can now be lifted from the machine.
- Remove the rear panel from the machine also.
- Now fold both the top and rear cover to behind the machine where it is out of the way.
- Unscrew the two screws from the front panel then lift the panel off the machine, be careful not to break any of the outer holding clips from the panel. Removing the front panel will make it easier to access the front boiler and group head screws.

Step 5 — Removing the Boiler, Hoses & Leads



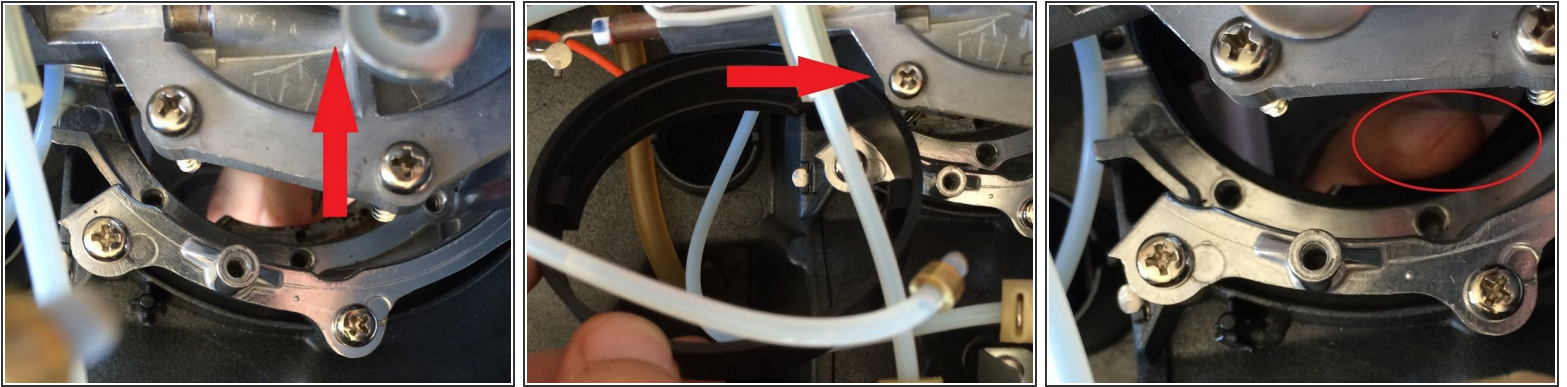
- Remove the three phillips screws from the group head boiler.
- Using your needle nose pliers remove the locking clip pins from the boiler tubes and the pressure dial from the front panel.
- Use the needle nose pliers to remove the yellow leads from the boiler also.
- You may wish to mark each tube prior to the next step.
- Now remove the tubes and leads from the boiler. You will not need to remove the two red leads, 1 blue lead and the black leads as these can easily be kept with the boiler when moving it to the rear of the machine

Step 6 — Relocating The Boiler & Removing the Group Head



- The boiler can now be relocated to the rear of the machine where it will sit out of the way whilst working on the group head.
- After relocating the boiler, unscrew the 8 screws holding the group head in place.

Step 7 — Removing & Replacement Of Collar



- Lift the Group Head out of the way, it can be pulled to the side if required, now remove the plastic collar from the machine (not pictured). At this stage it's a good idea to clean any old coffee grinds from group head and from the aluminum rim underneath the removed insert.
- Now insert the new group collar insert into the housing.
- Orientation of the insert is not a concern here, just make sure it is bedded into the housing correctly (small lugs are resting in their respective holes).

To reassemble your device, follow these instructions in reverse order.