



# TomTom One XL Power Button Replacement

This guide will teach you how to disassemble...

Written By: Jesse



# INTRODUCTION

This guide will teach you how to disassemble your TomTom One XL and expose the power button for cleaning or repair.

---

## TOOLS:

[T6 Torx Screwdriver](#) (1)

## PARTS:

[Replacement Power Button for TomTom One XL](#) (1)

---

### Step 1 — Back Panel



- Remove the 4 .4mm screws on the back of the device.

## Step 2

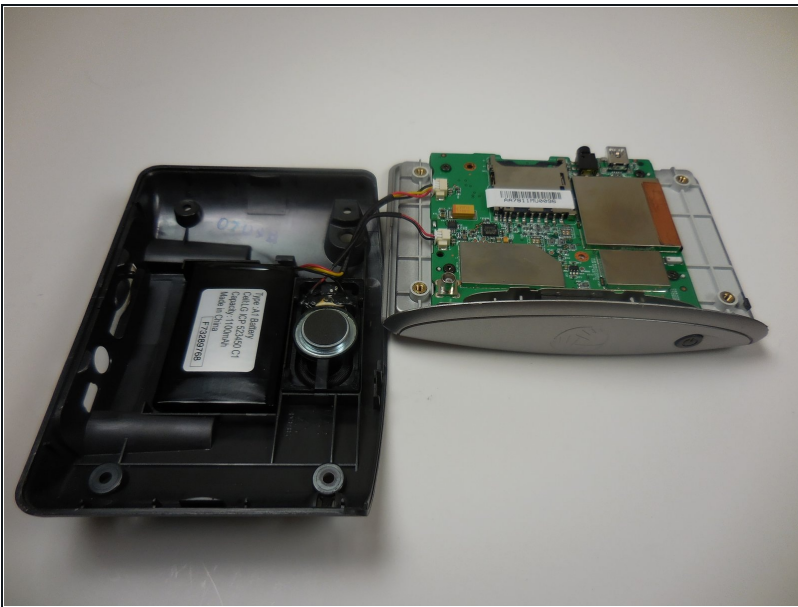


- Using the palate knife tool, pry the back from the LCD screen. Apply a moderate pressure to separate them.

**i** You can rotate TOMTOM XL to make prying back off easier.

**⚠** Be careful not to injure the two wires connecting the pieces.

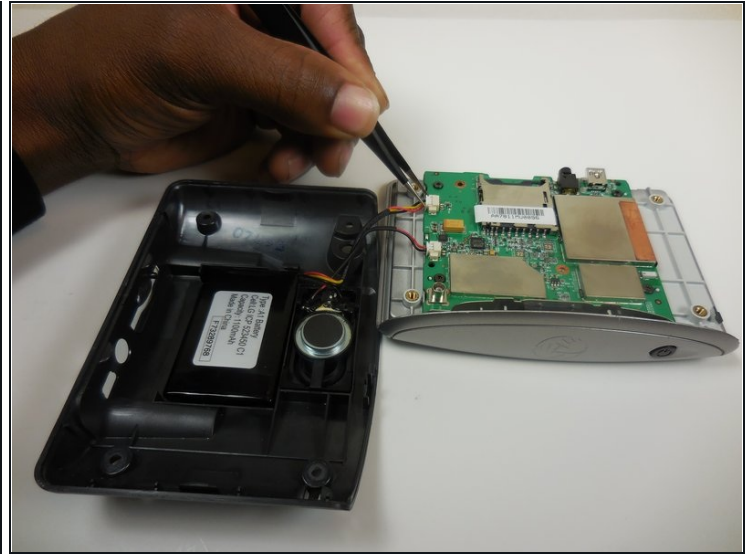
## Step 3



- After prying both halves apart, they will be connected by two wires.
- Carefully set the two halves next to each other making sure not to stress or damage the wires.



## Step 4



- Using the [tweezers](#) separate the wires connecting the battery and speaker to the motherboard.

⚠ Be gentle while pulling the wires out, the plugs are easily injured.

## Step 5 — Power Button



- Using a Torx 6 screwdriver, remove the 4 .5mm screws connecting the motherboard to the screen assembly.

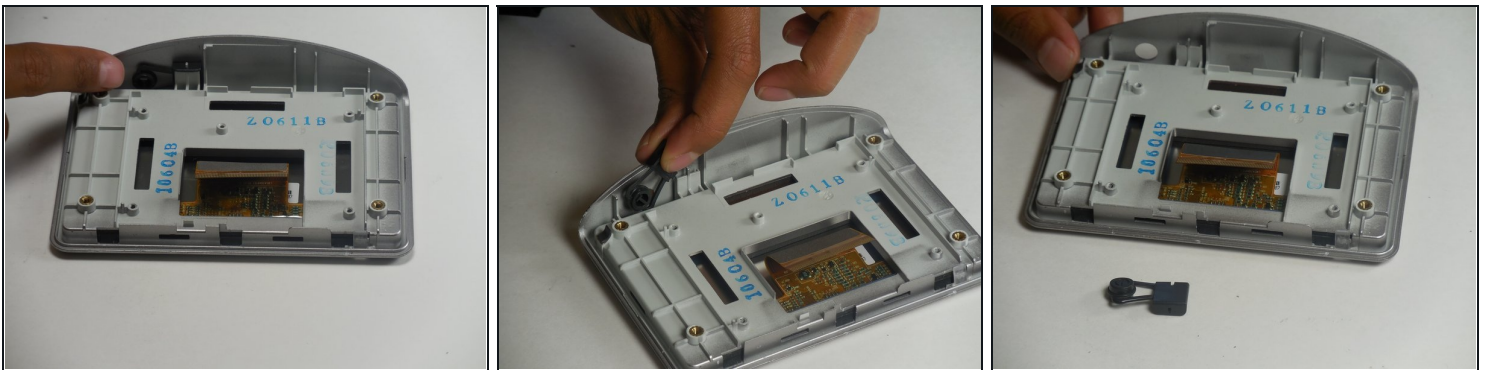
⚠ The motherboard is connected to the screen assembly via a ribbon wire. After removing the screws, be careful not to damage the wire or the port.

## Step 6



- Detach the ribbon wire from it's port on the back of the motherboard.

## Step 7



- Now the power button is exposed and any obstructions can be easily removed.
- ① If you want to replace the button it can easily be popped out using your hands.

To reassemble your device, follow these instructions in reverse order.