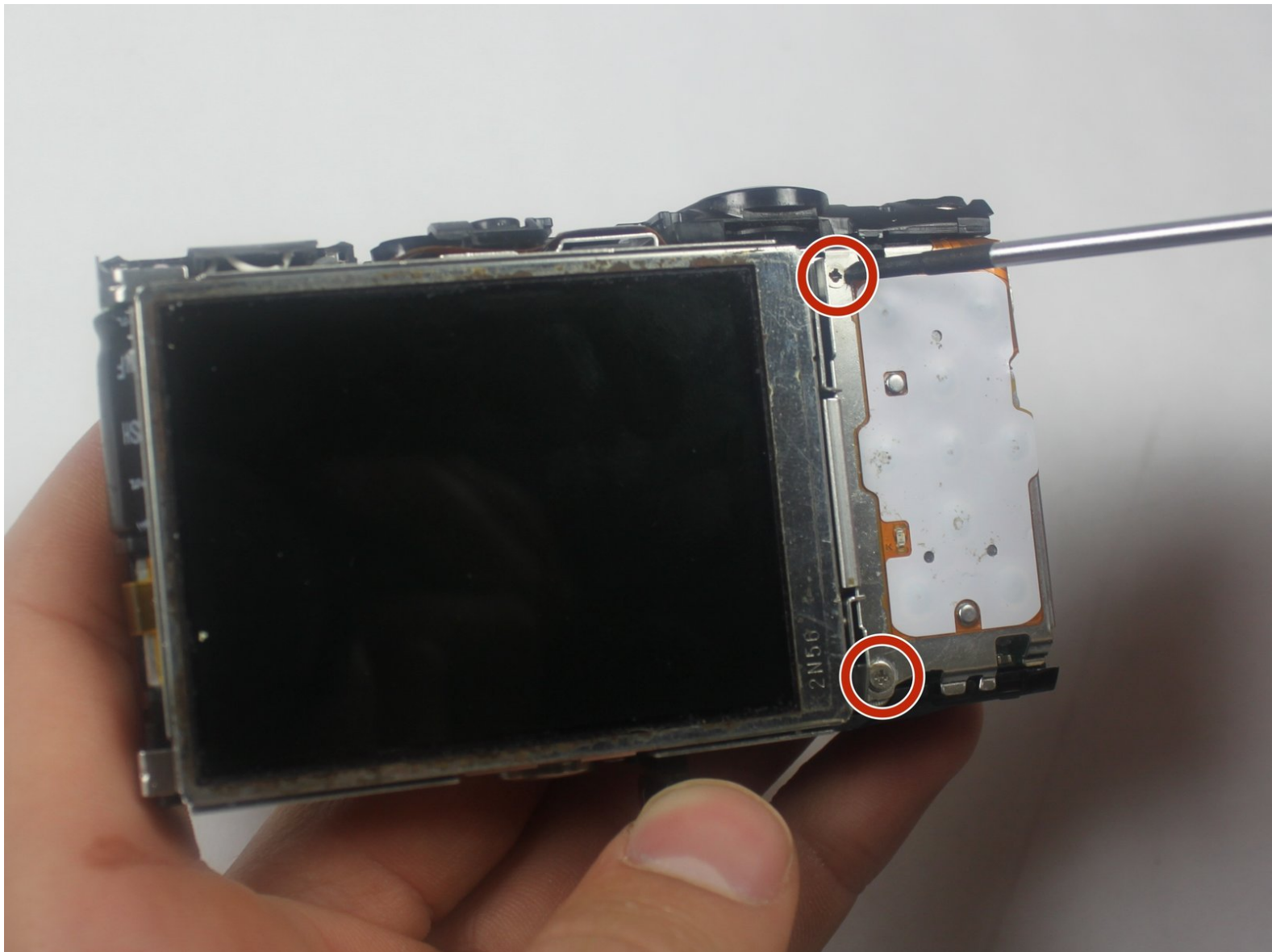




Canon PowerShot A2300 LCD Replacement

This guide will show you how to replace the LCD display screen for the Canon PowerShot A2300

Written By: Ashley Fincher



INTRODUCTION

This guide walks the reader through how to disassemble the Canon PowerShot A2300 in order to replace the display screen. It is necessary to first remove the front and back covers before reaching the screen.



TOOLS:

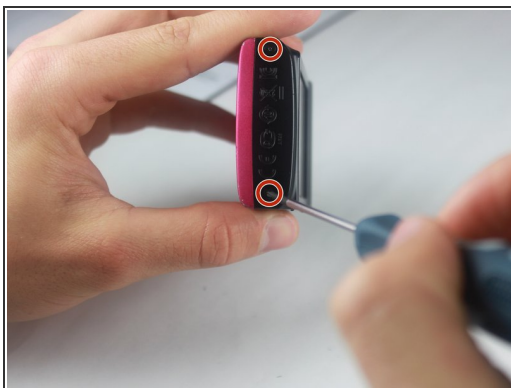
- [Spudger](#) (1)
 - [Tweezers](#) (1)
 - [Phillips #00 Screwdriver](#) (1)
-

Step 1 — Front Cover




- Open the A/V Out Digital port cover on the function button side to reveal a screw.

Step 2



- Remove all 6 screws(2.70 mm), 2 on each side and 2 on the bottom.

 Screws are small and very easily lost.

Step 3



- Open the card/battery latch by sliding the cover away from the camera in the direction indicated by the arrow.
- ⓘ Doing this gives a spot to grip on the bottom of the front cover. This will make it easier to handle when removing.

Step 4



- Gently lift the bottom of the front cover to roughly a 30 degree angle.

Step 5



- Pull the top of the front cover away from the camera by gripping the top of the front cover by the corners where the cover is still attached to the body.

Step 6 — Back Cover




- Hold the camera in your hands with both thumbs on the screen with the screen faced up.
- ⓘ Keep close to the table top in case the camera falls out of your hands.

Step 7



- Pull the the bottom left corner of the cover up about an inch to the point shown in the picture.

 Do not completely remove the back cover by pulling on the side as shown. The cover is still attached on the top of the camera.

Step 8



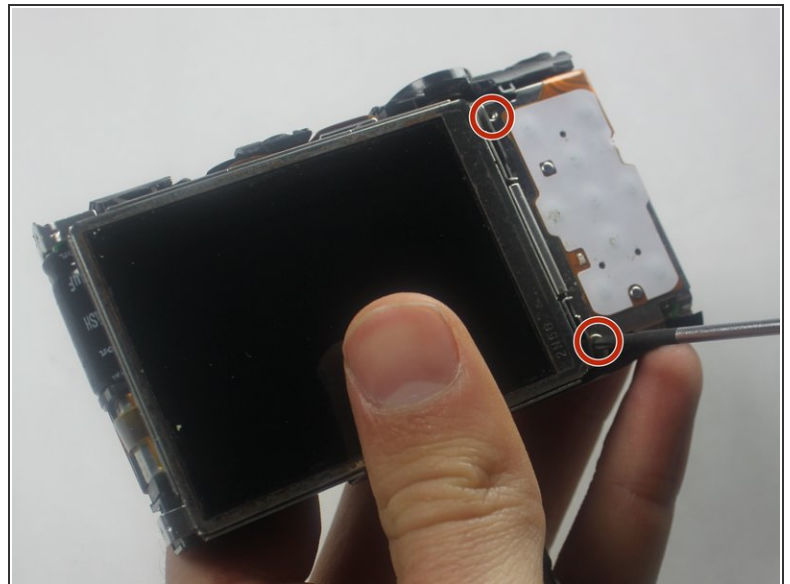
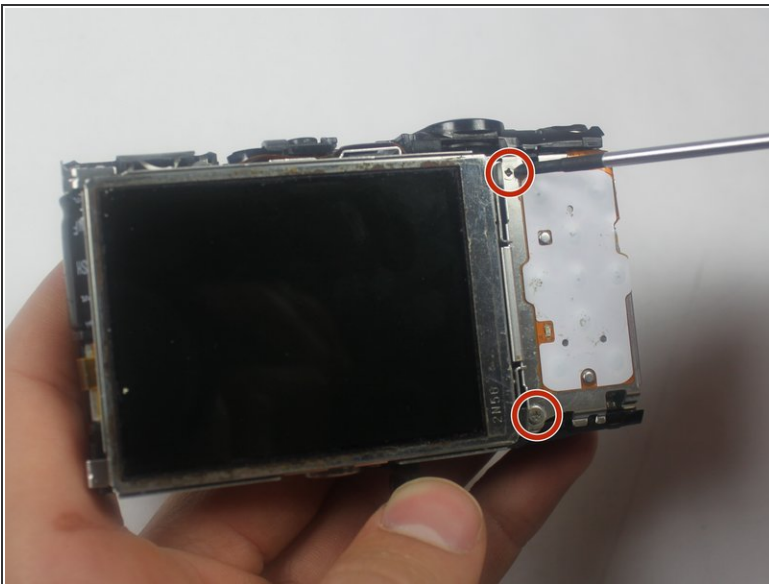
- Pry the top off by sliding the spudger under the On/Off button.

Step 9



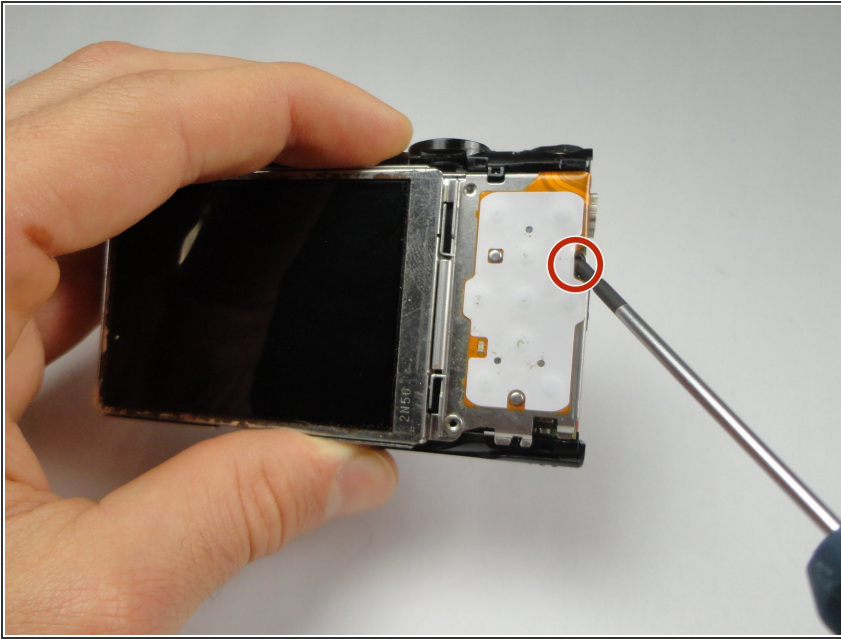
- Slide the cover to the right and off the camera.
- ⓘ Gently pry using the spudger on the right side if necessary.
- ⓘ The A/V OUT DIGITAL cover will sometimes become loose and disconnect from the cover

Step 10 — LCD



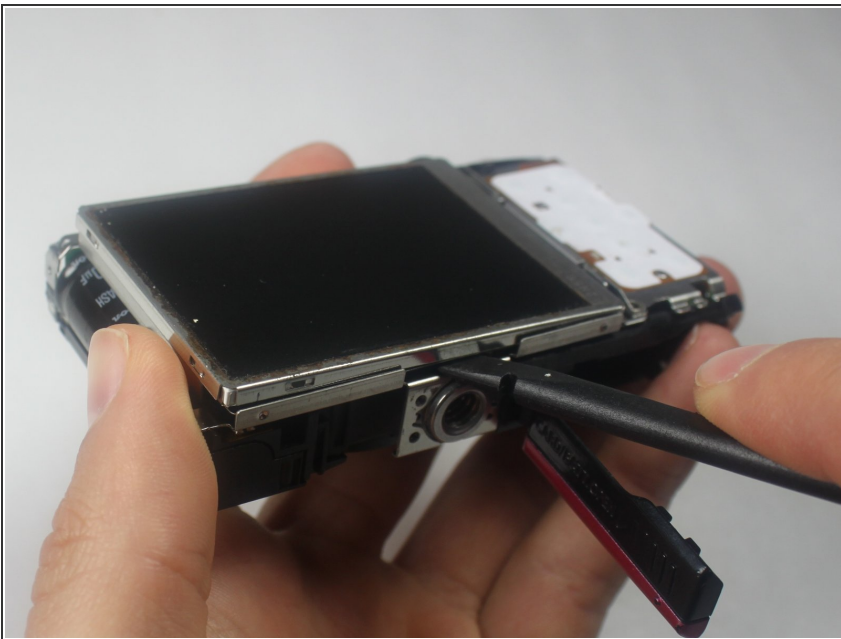
- Remove the 2 screws(1.95 mm) by the top right and bottom right of the screen.

Step 11



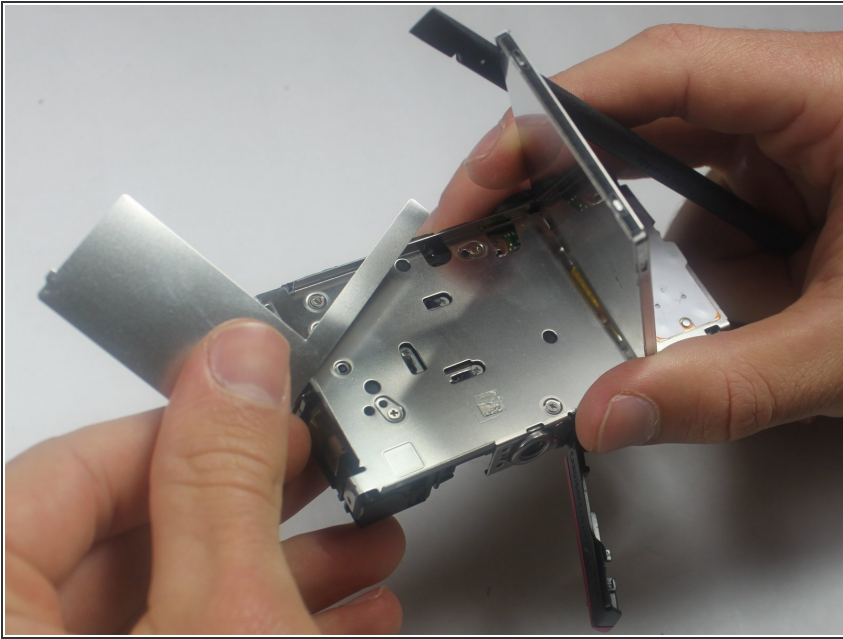
- Remove the screw(3.57 mm) next to the A/V OUT Digital port.
- ⓘ This screw connects the function button metal plate to the circuit board.

Step 12



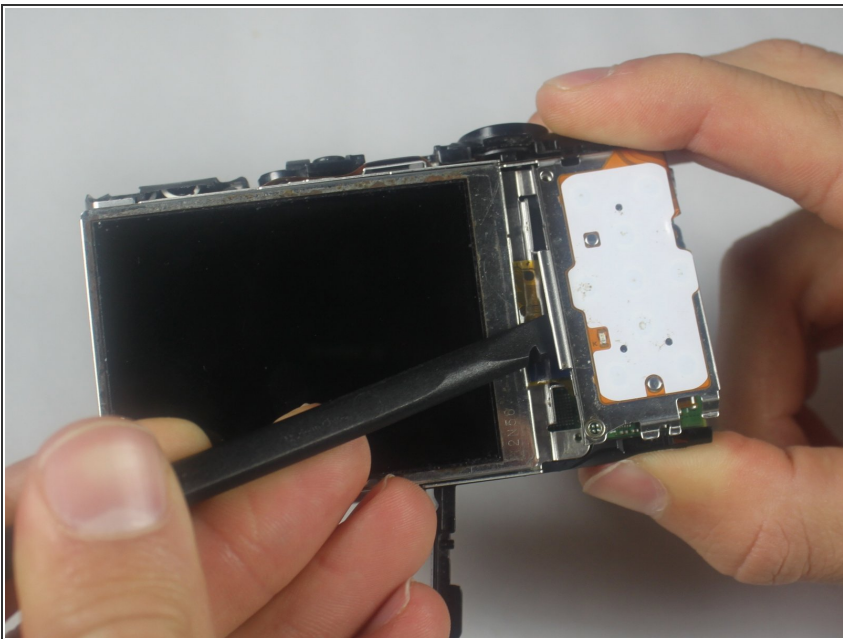
- Raise the screen by wedging the spudger between the bottom of the screen and the mount hole.

Step 13




- Remove the metal sheet that is under the screen.


Step 14




- Wedge the flat end of the spudger between the camera and the function buttons plate to push the

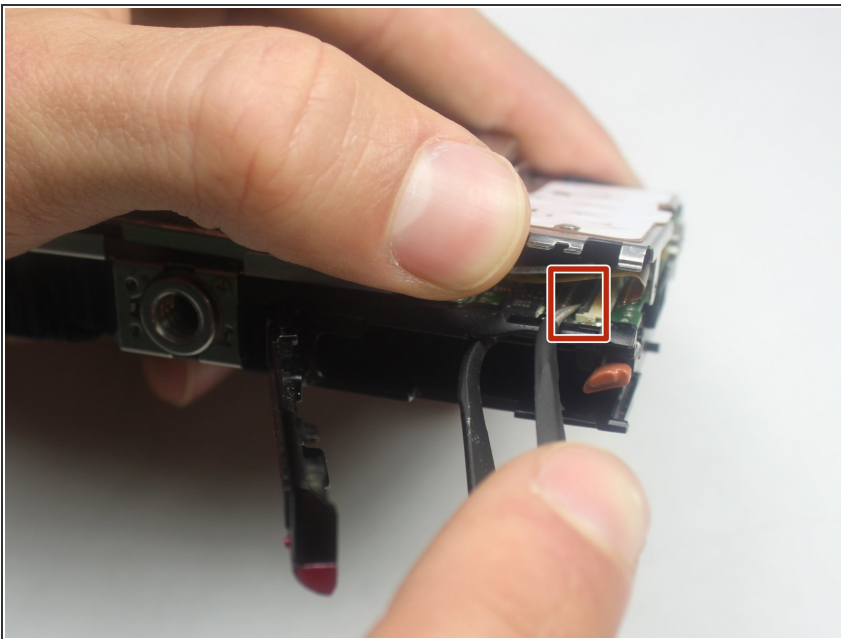
plate out from under the hooks that attach the left side of the plate.


 The plate will still be attached at the top of the camera.

 This will allow the bottom of the function button plate to be raised in order to get to where the ribbon cable attaches to the circuit board.

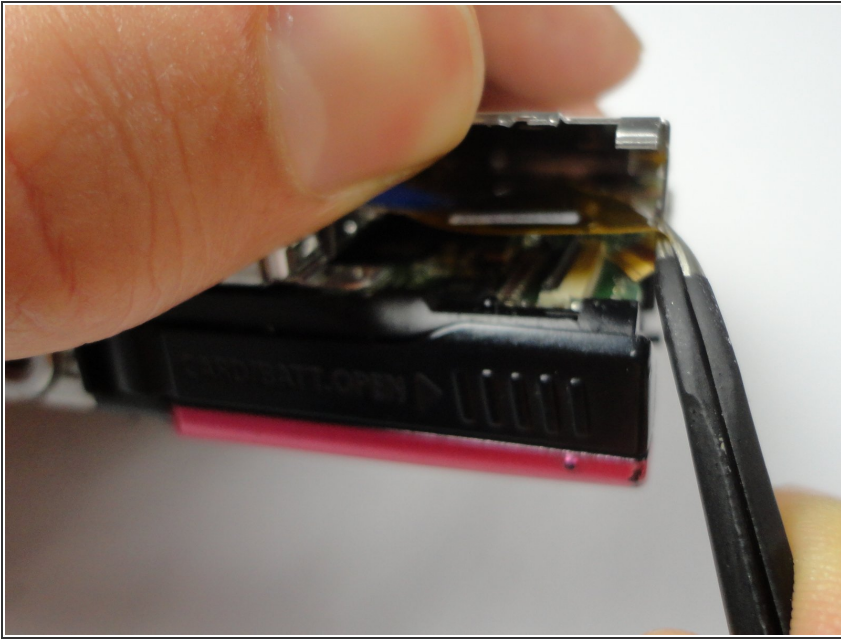
 Make sure all 3 screws have been removed.

Step 15



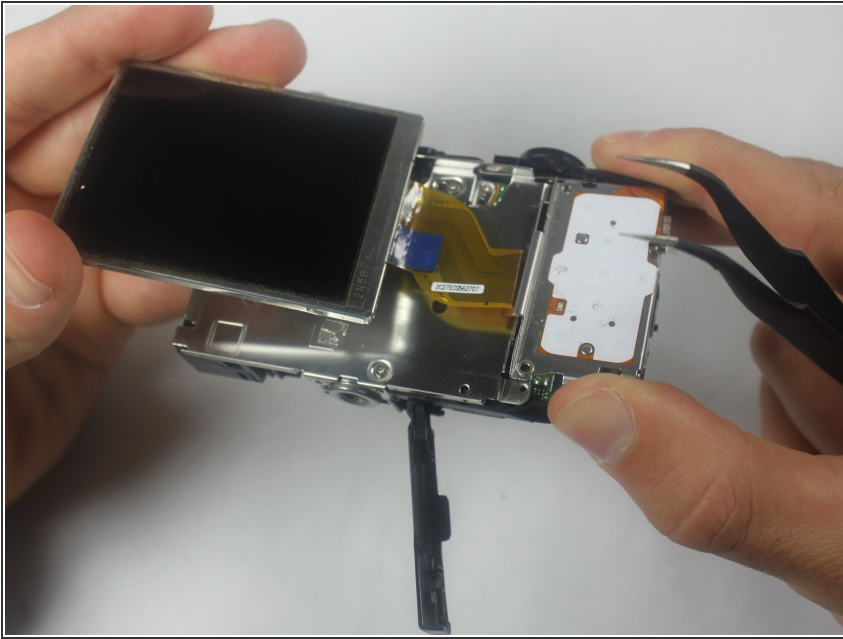
- Raise the bottom of the function button plate with your thumb.
- Use one side of the tweezers to raise the black retaining flap that holds the orange ribbon cable to the zero insertion force (ZIF) connector.
-  The latch is approximately as long as the width of the electric tape

Step 16



- Gently remove the ribbon cable from the ZIF connector using the tweezers

Step 17



- With the bottom of the function button plate still raised pull the screen out to the left until the ribbon cable is out from underneath the function button plate.

To reassemble your device, follow these instructions in reverse order.