



Xelio P1001A-BK DC Power Socket Replacement

If the power connector on the Xelio P1001A-BK...

Written By: Michael Case



INTRODUCTION

If the power connector on the Xelio P1001A-BK tablet is damaged, it can be de-soldered from the motherboard and replaced with a new part. This is a 2.5mm x .7mm power plug which should be readily available from most electronic parts stores. The repair should take about one hour for the intermediate do-it-yourselfer.

Since the motherboard will be exposed, care should be taken to prevent short circuiting the power leads from the battery or allowing static electricity to damage the motherboard. An antistatic mat should be used if available.

Be patient and go slow with this repair as several small parts will be removed and they could be easily damaged or lost. A magnetic mat or parts tray is recommended to keep small parts together.

TOOLS:

Flat Needle Nose Pliers (1)
Volt Ohm Meter (1)
Phillips #0 Screwdriver (1)
Soldering Iron 60w Hakko 503F (1)
Solder Vacuum (1)

PARTS:

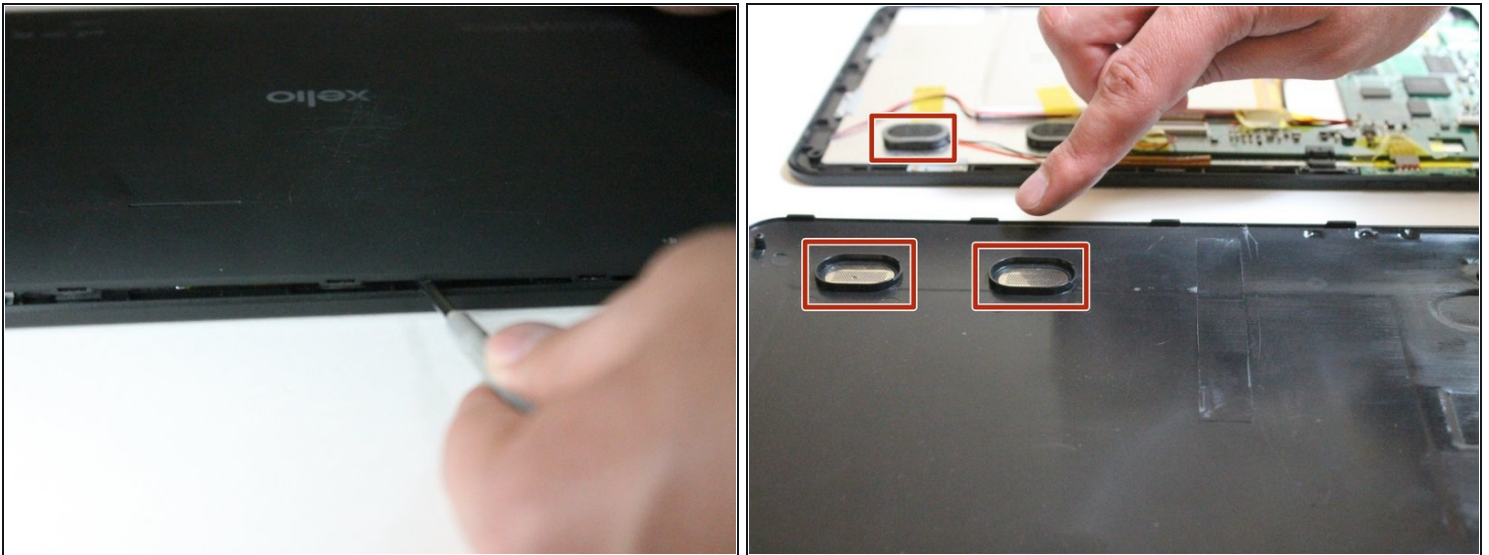
2.5mm x .7mm Male Surface Mount DC
Power Socket (1)
Lead-Free Solder (1)

Step 1 — Back Cover



- Remove the two 3 mm retaining screws from the side of the tablet with a Phillips #0 screwdriver.

Step 2



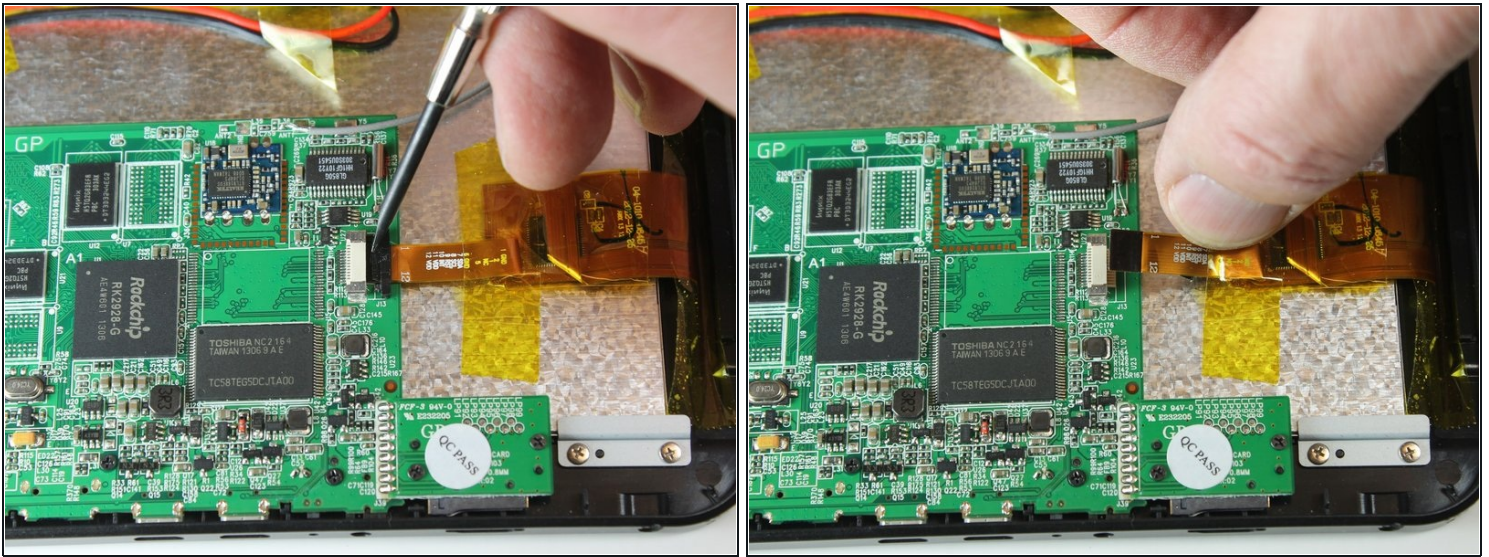
- Insert the plastic opening tool in between the shelf halves and lift the top shelf half to detach the securing tabs.
- ❗ There are four securing tabs located on each long side.
- ☑ Before fully separating the shell halves, observe if the speakers are separated from the shell half. If they are still in their sockets, gently pry them loose with the plastic opening tool.

Step 3 — DC Power Socket



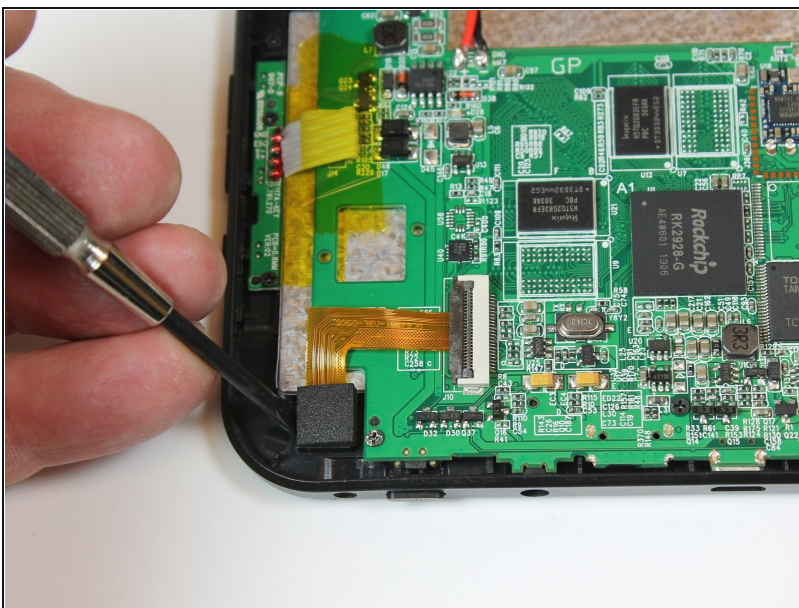
- Remove the micro-SD card from the card slot if a card is in the slot

Step 4



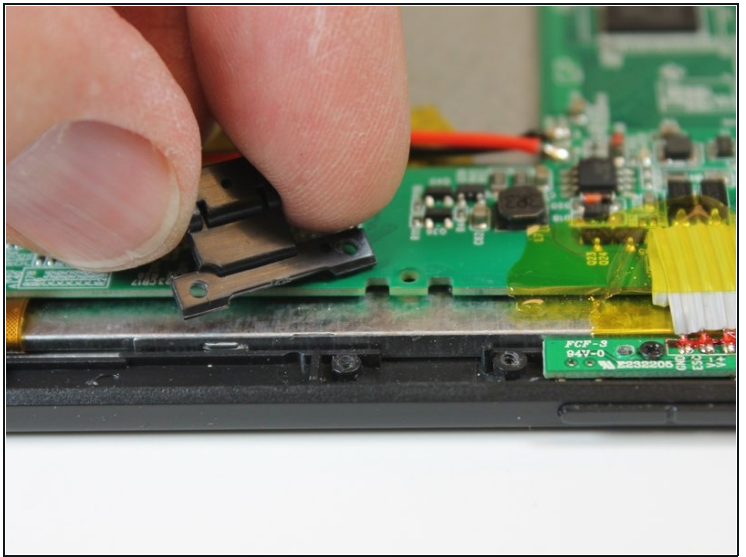
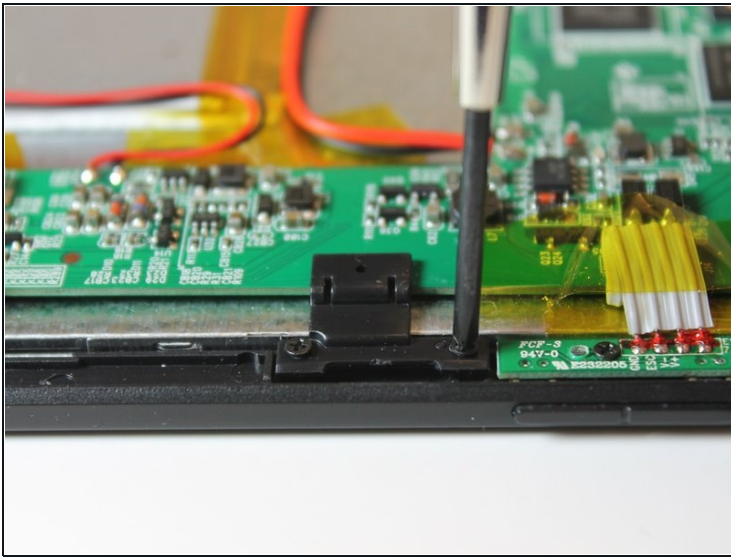
- Remove the motherboard to screen ribbon cable
- Pry the ribbon cable retaining tab loose with plastic opening tool.
- Slide the ribbon cable out from the connector.

Step 5



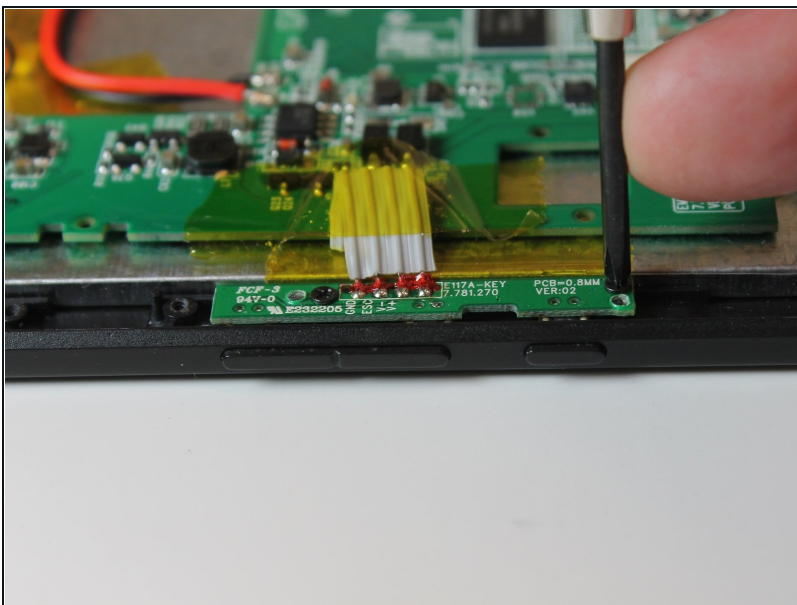
- Remove the camera from its socket. Do not remove the camera ribbon cable.

Step 6



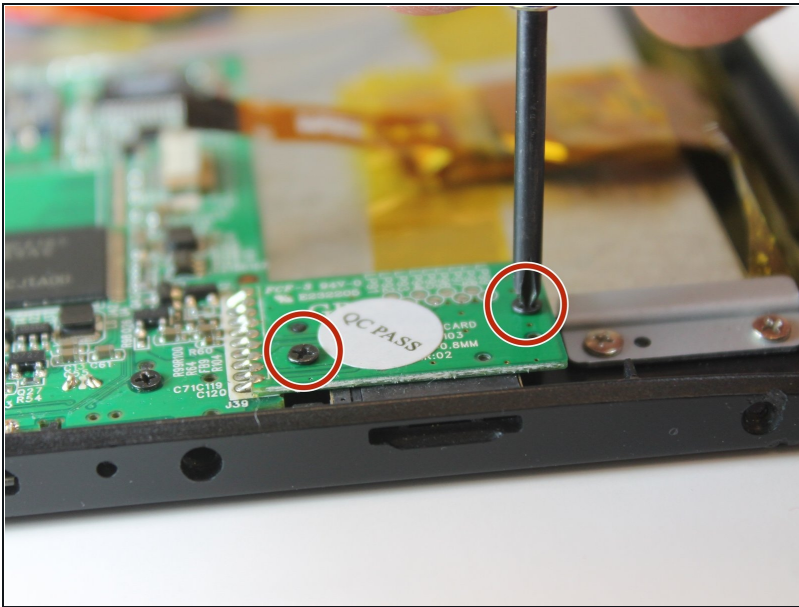
- Remove the two motherboard retaining clip screws with a No. 0 Philips head screwdriver
- Remove the retaining clip from the board.

Step 7



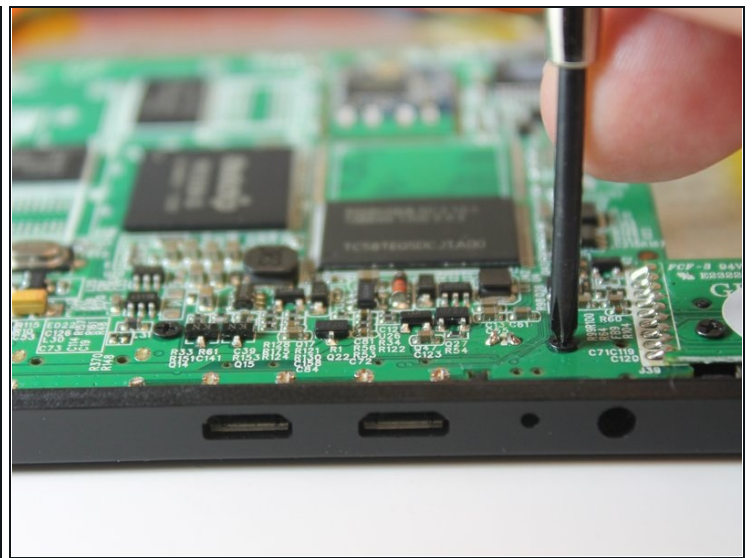
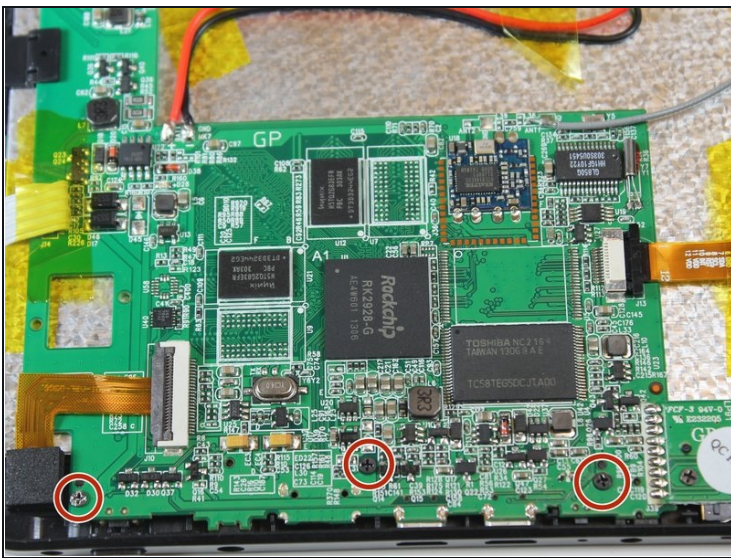
- With the No. 0 Phillips head screwdriver, remove the two screw that hold the function and volume control switch assembly to the tablet.

Step 8



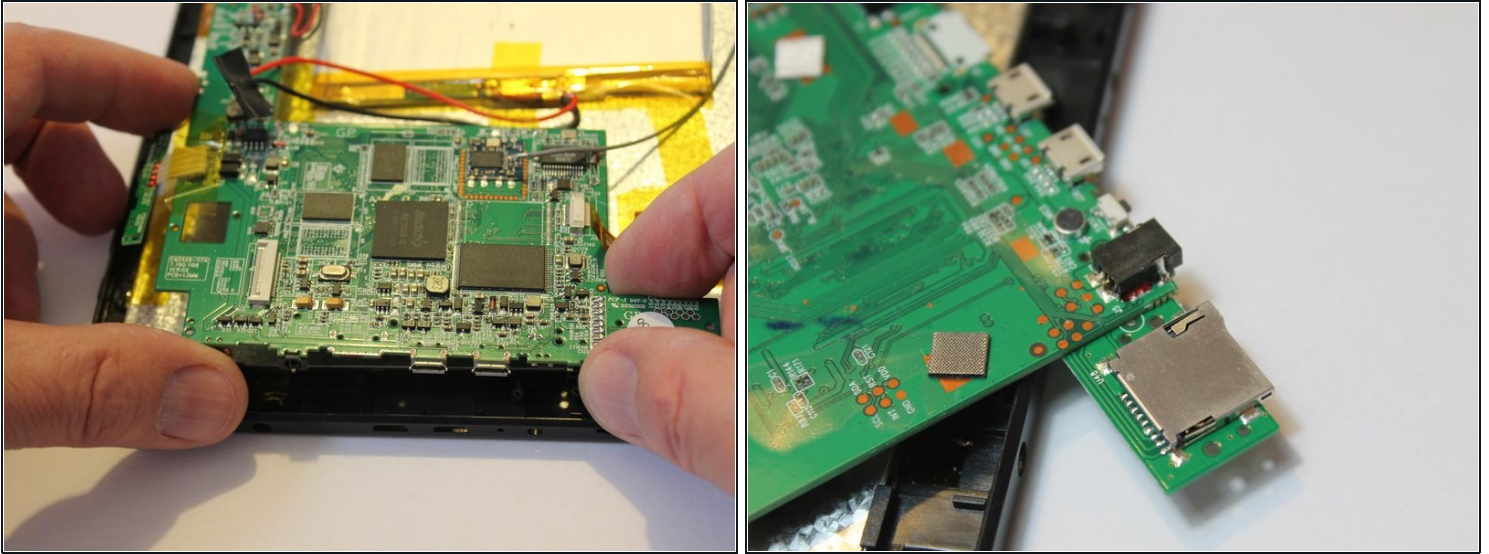
- Remove the two screws that secure the micro-SD card reader to the tablet frame

Step 9



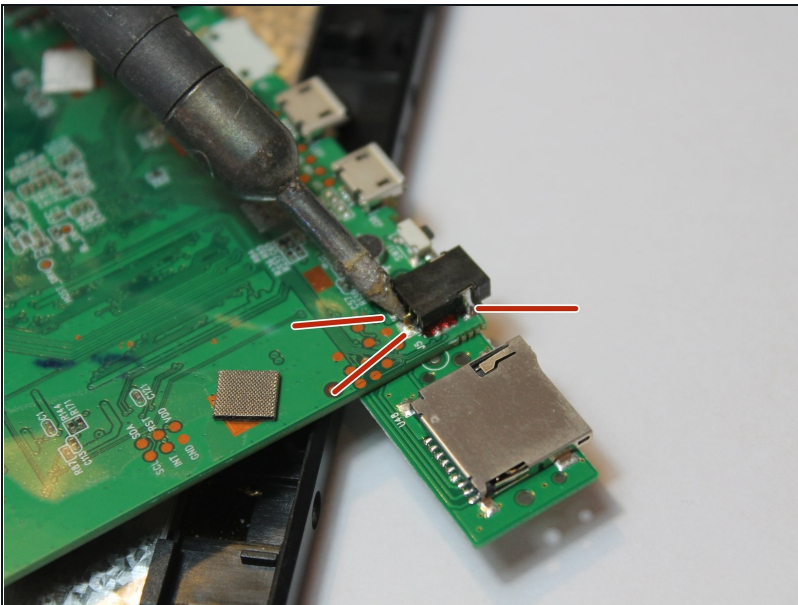
- Remove the three screws that secure the motherboard to the tablet frame

Step 10



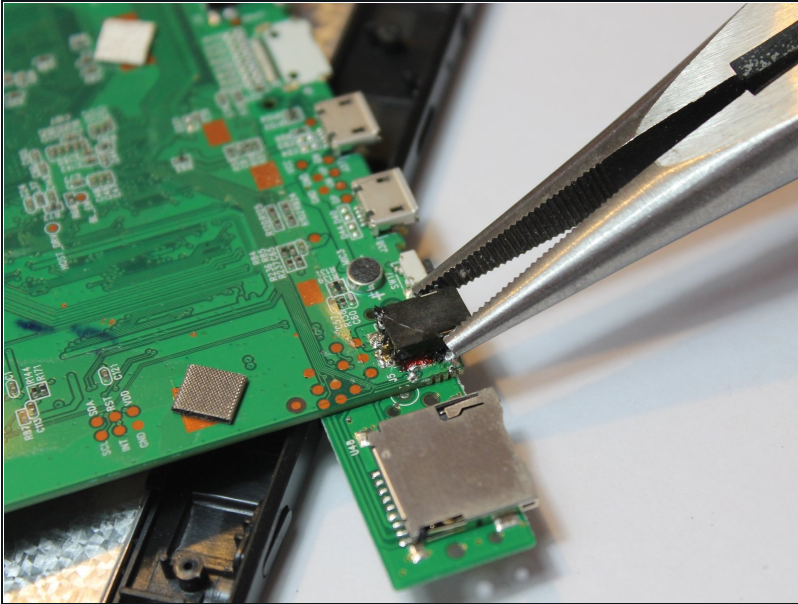
- Gently lift the motherboard free from the tablet frame and turn it over to expose the opposite side. This will expose the power socket solder pins.
- Be cautious when turning the board over as another ribbon cable, the speaker wires, battery wires, and Wi-Fi antenna wire are still connected to the motherboard.

Step 11



- De-solder each of the solder points.

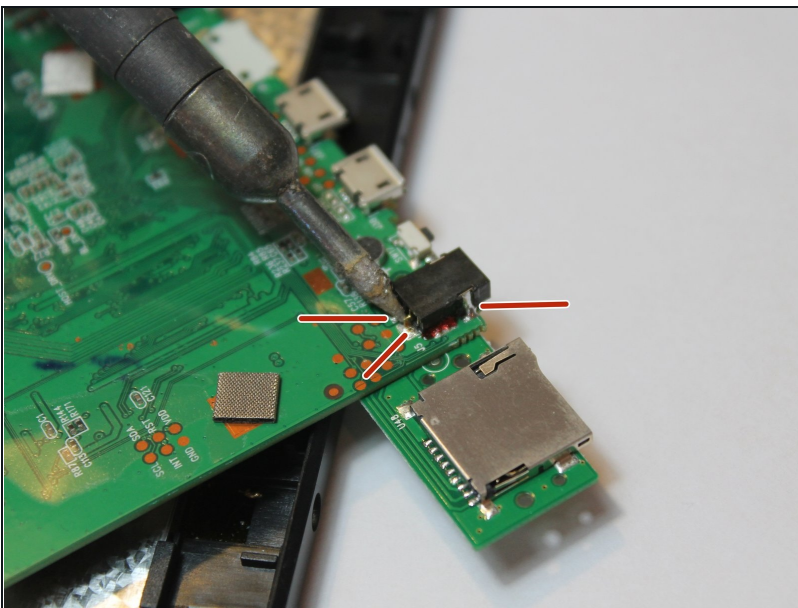
Step 12



- Remove the damaged power socket.
- ① Use a needle nose pliers or pair of tweezers to hold the power socket as it is a small part and may be difficult to hold.

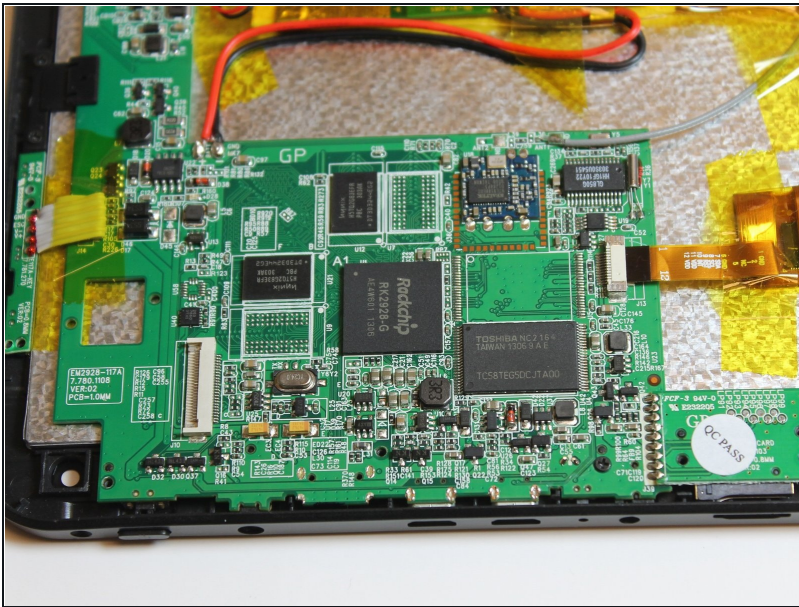
⚠ Be careful to avoid touching the solder pins as they may still be hot

Step 13



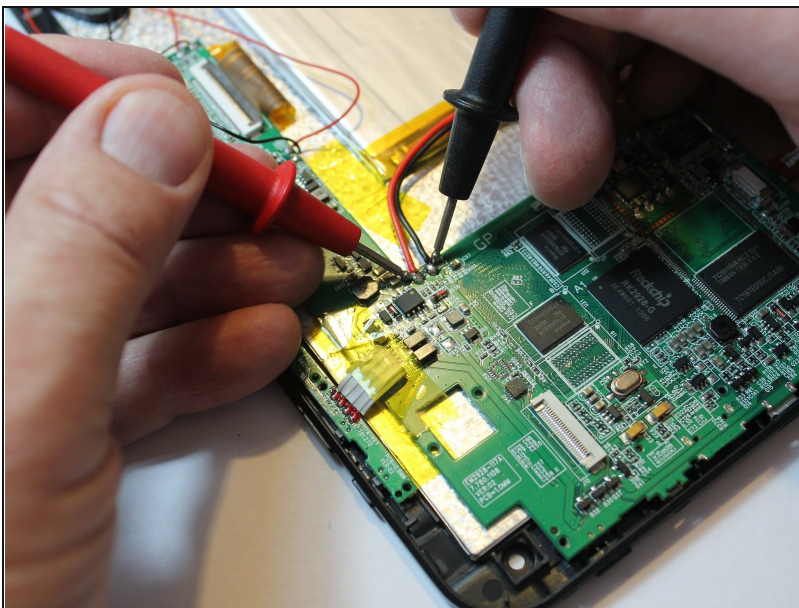
- Place the new part on the board
- Solder the new part into place

Step 14



- Place the motherboard back into its proper position but do not reinstall the securing screws yet.

Step 15



- Plug the tablet power supply into the power socket
- Using a volt-ohm meter, touch the meter probes to the battery wire points on the motherboard to ensure voltage is getting to the battery.

To reassemble your device, follow these instructions in reverse order.