



Canon PowerShot A2300 Back Cover Replacement

This guide will allow the user take the apart the Canon PowerShot A2300 in order to remove the plastic back cover.

Written By: Nathan McMillan



INTRODUCTION

This guide will walk the user through the removal of the back cover for the purpose of replacement. In order to remove the back cover of the Canon PowerShot A2300 it is also necessary to remove the front cover.



TOOLS:

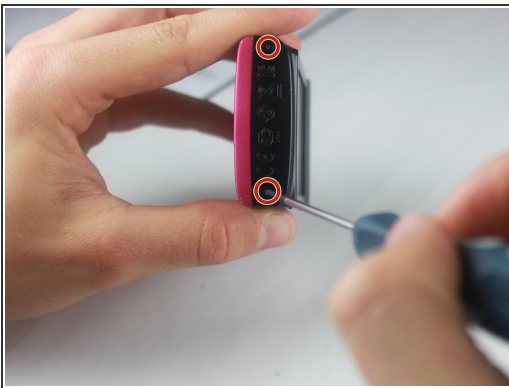
- [Spudger](#) (1)
 - [Phillips #00 Screwdriver](#) (1)
-

Step 1 — Front Cover




- Open the A/V Out Digital port cover on the function button side to reveal a screw.

Step 2



- Remove all 6 screws(2.70 mm), 2 on each side and 2 on the bottom.

 Screws are small and very easily lost.

Step 3



- Open the card/battery latch by sliding the cover away from the camera in the direction indicated by the arrow.
- ⓘ Doing this gives a spot to grip on the bottom of the front cover. This will make it easier to handle when removing.

Step 4



- Gently lift the bottom of the front cover to roughly a 30 degree angle.

Step 5



- Pull the top of the front cover away from the camera by gripping the top of the front cover by the corners where the cover is still attached to the body.

Step 6 — Back Cover




- Hold the camera in your hands with both thumbs on the screen with the screen faced up.
- ⓘ Keep close to the table top in case the camera falls out of your hands.

Step 7



- Pull the the bottom left corner of the cover up about an inch to the point shown in the picture.

 Do not completely remove the back cover by pulling on the side as shown. The cover is still attached on the top of the camera.

Step 8



- Pry the top off by sliding the spudger under the On/Off button.

Step 9



- Slide the cover to the right and off the camera.
- ⓘ Gently pry using the spudger on the right side if necessary.
- ⓘ The A/V OUT DIGITAL cover will sometimes become loose and disconnect from the cover

To reassemble your device, follow these instructions in reverse order.