



Fujifilm FinePix S2980 Flash Mechanism Latch Spring Replacement

This guide will tell you how to replace the spring mechanism that keeps the flash closed.

Written By: Megan Merlo





TOOLS:

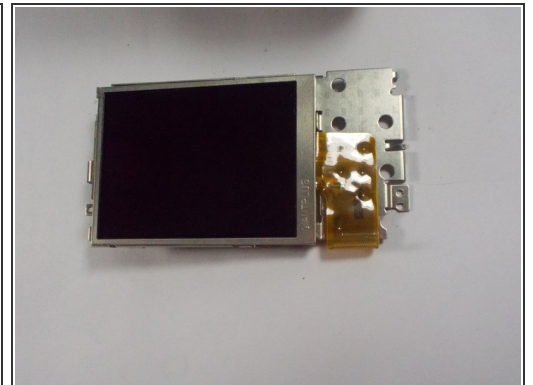
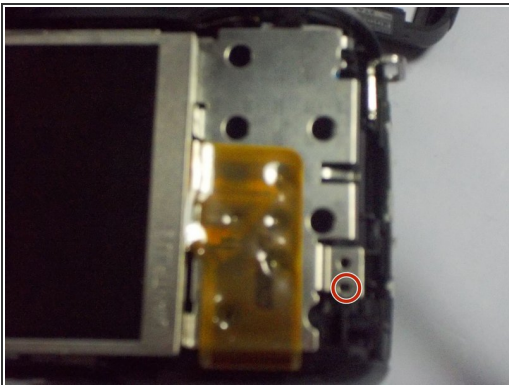
- [Phillips #0 Screwdriver](#) (1)
 - [iFixit Opening Tools](#) (1)
-

Step 1 — LCD Screen



- Use a PH0 screwdriver to remove four screws on the right side, three screws on the bottom, and four on the left side to take off the rear plate.

Step 2



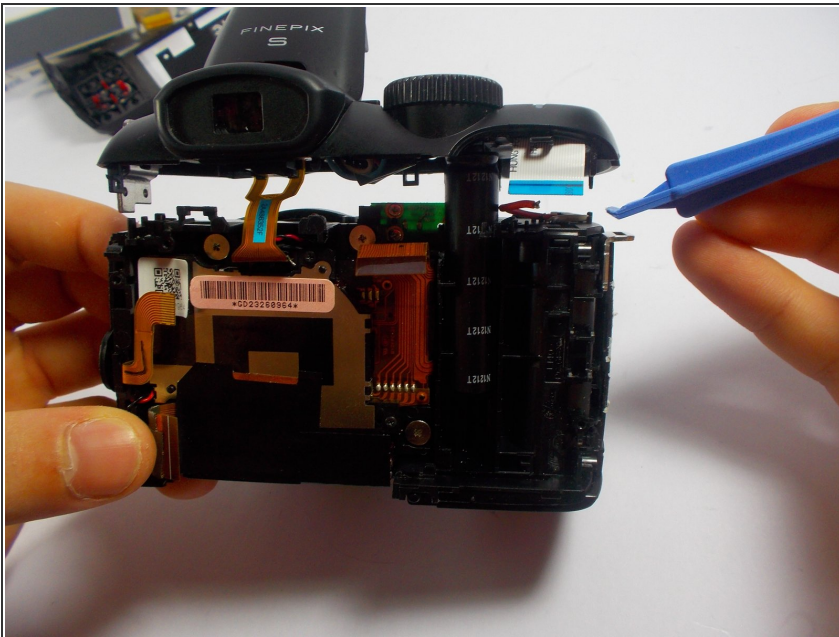
- Remove the three screws holding the LCD screen in place.
- Replace with new screen.

Step 3 — Flash Mechanism Latch Spring



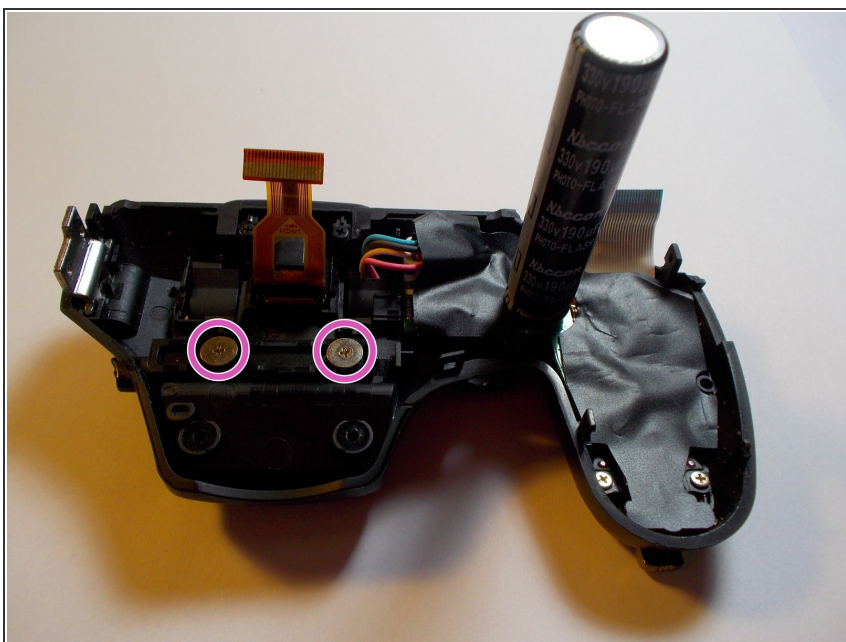
- Remove the two screws from underneath the flash mechanism.
- Remove the two screws placed on the right and left sides of the camera.

Step 4



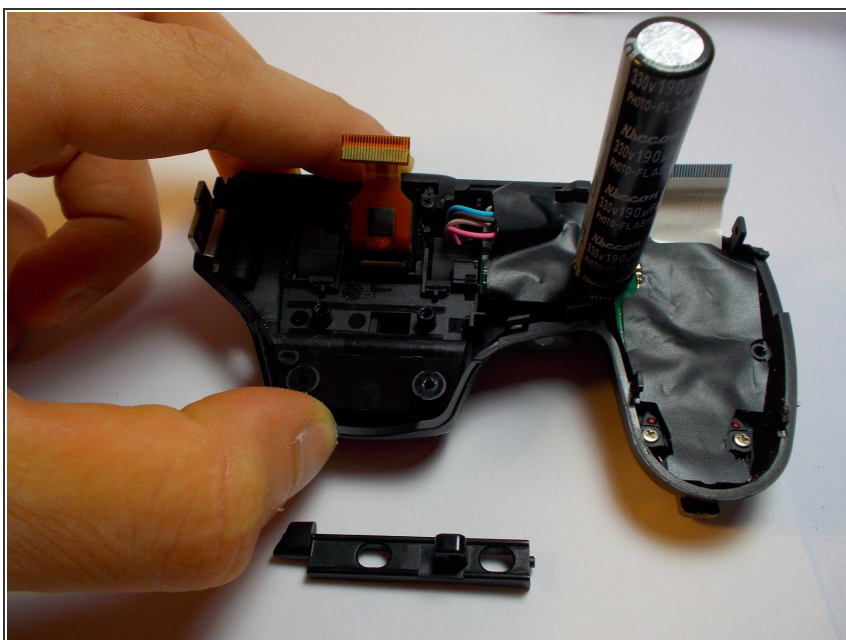
- Pry the top of the camera off using the given tool

Step 5



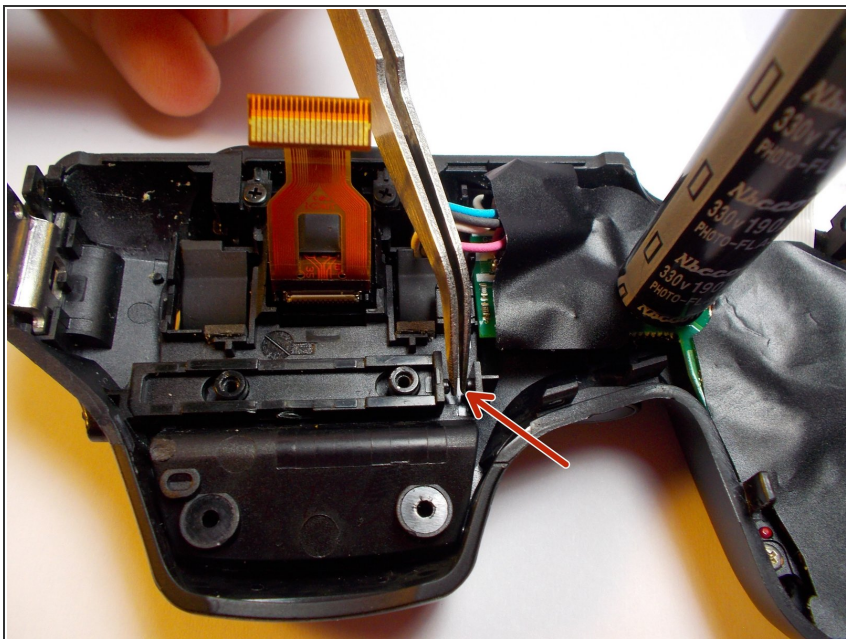
- Remove two silver plated screw from under the top of the camera, under the flash.

Step 6



- Remove the rectangular plastic piece.

Step 7



- Insert new spring.
- Replace the plastic piece.

To reassemble your device, follow these instructions in reverse order.