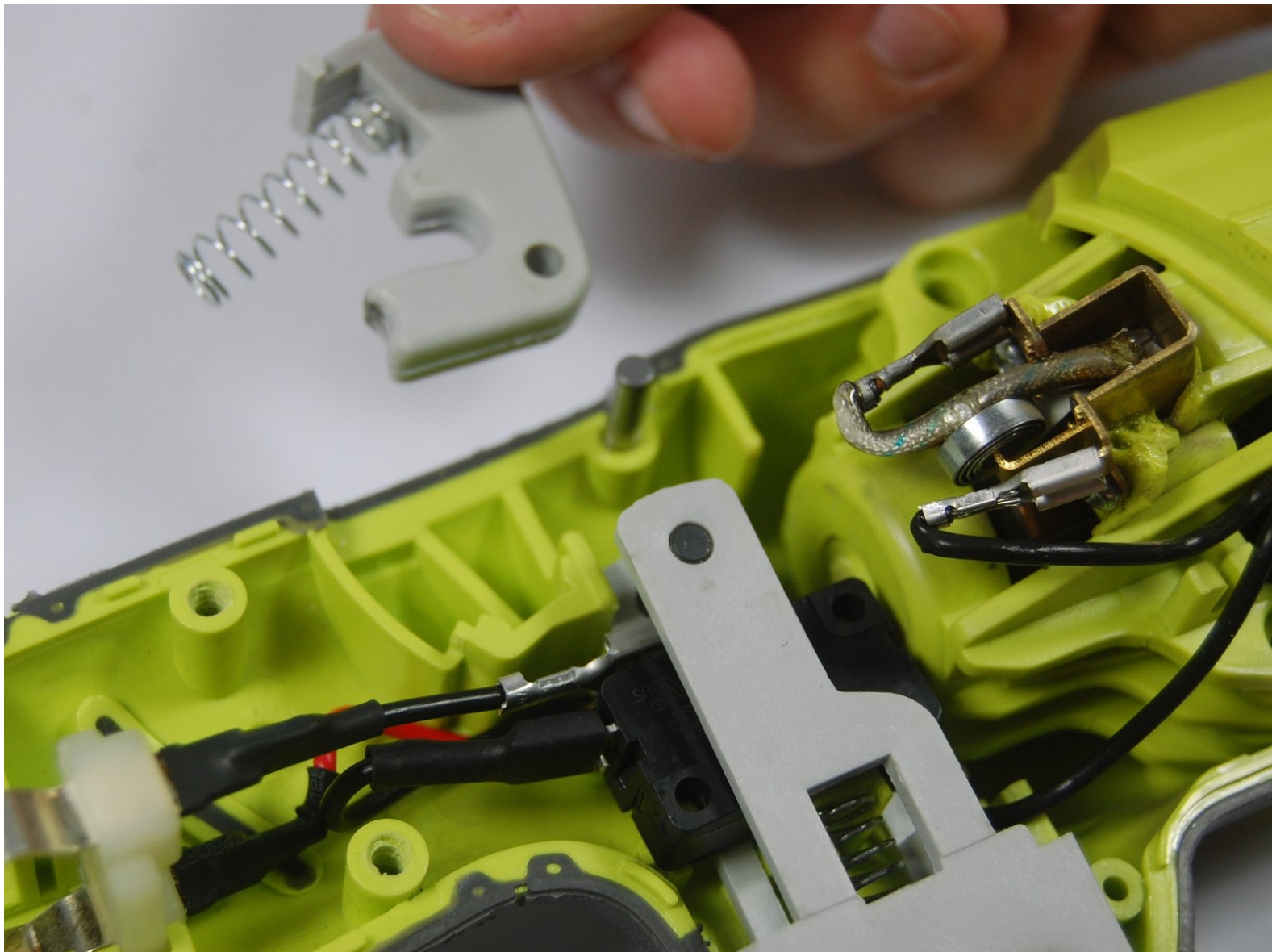




RYOBI P422 Safety Trigger Spring Replacement

This guide will cover how to replace the springs that are used in the safety trigger of your RYOBI P422.

Written By: Thomas Napert



INTRODUCTION

If your springs become damaged or weak from extended use, it's wise to replace them to ensure proper function. These springs may be under compression/ tension, so be wary when removing/ replacing these parts.

TOOLS:

- [T20 Torx Screwdriver](#) (1)
-

Step 1 — Battery and Handle



- To remove the battery press down on the two buttons located on each side of the battery and pull away from the body of the grinder.
- To remove the handle hold grinder with one hand and use the other hand to unscrew the handle with a counter-clockwise motion

Step 2 — Safety Trigger Spring



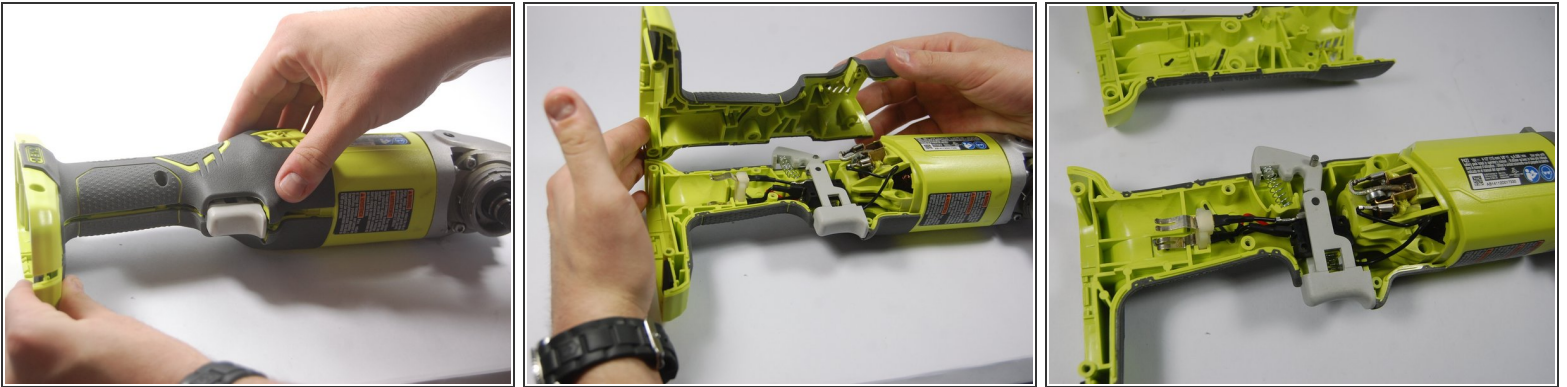
- Lay grinder flat on its side so the screws are facing up

Step 3



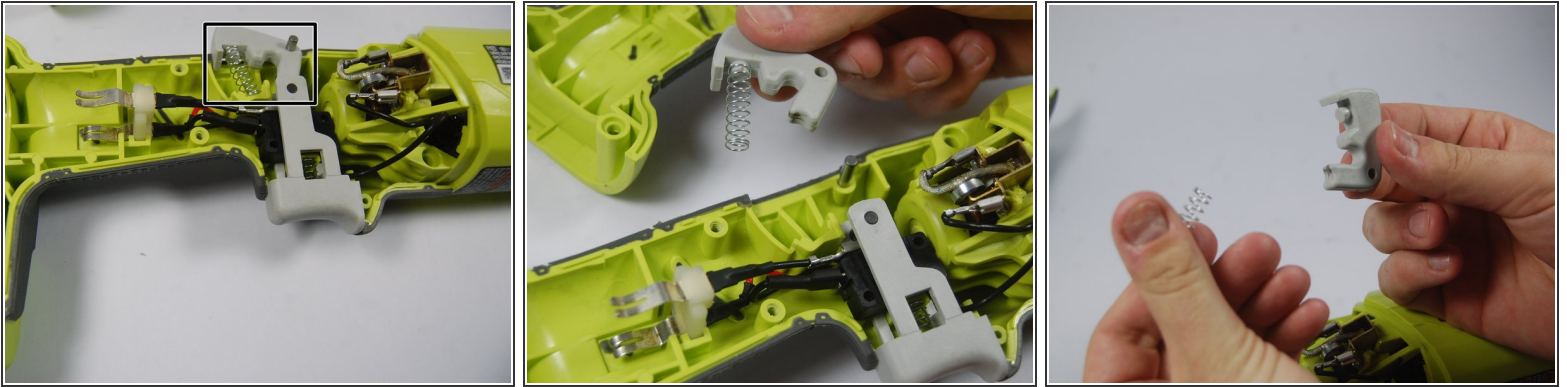
- Remove the four 1.8 cm screws from the lower and midsection of the body with a T20-20 Torque screwdriver.
- Remove the 3.7 cm screws from the upper section of the body, with the same screwdriver

Step 4



- Now that the two halves are unscrewed, remove the top half

Step 5



- Remove the safety trigger along with the spring.
- To remove the spring, pull it gently off the bottom of the trigger.
- ⓘ When putting a new spring in make sure it slides into the groove on the bottom of the trigger.

To reassemble your device, follow these instructions in reverse order.