

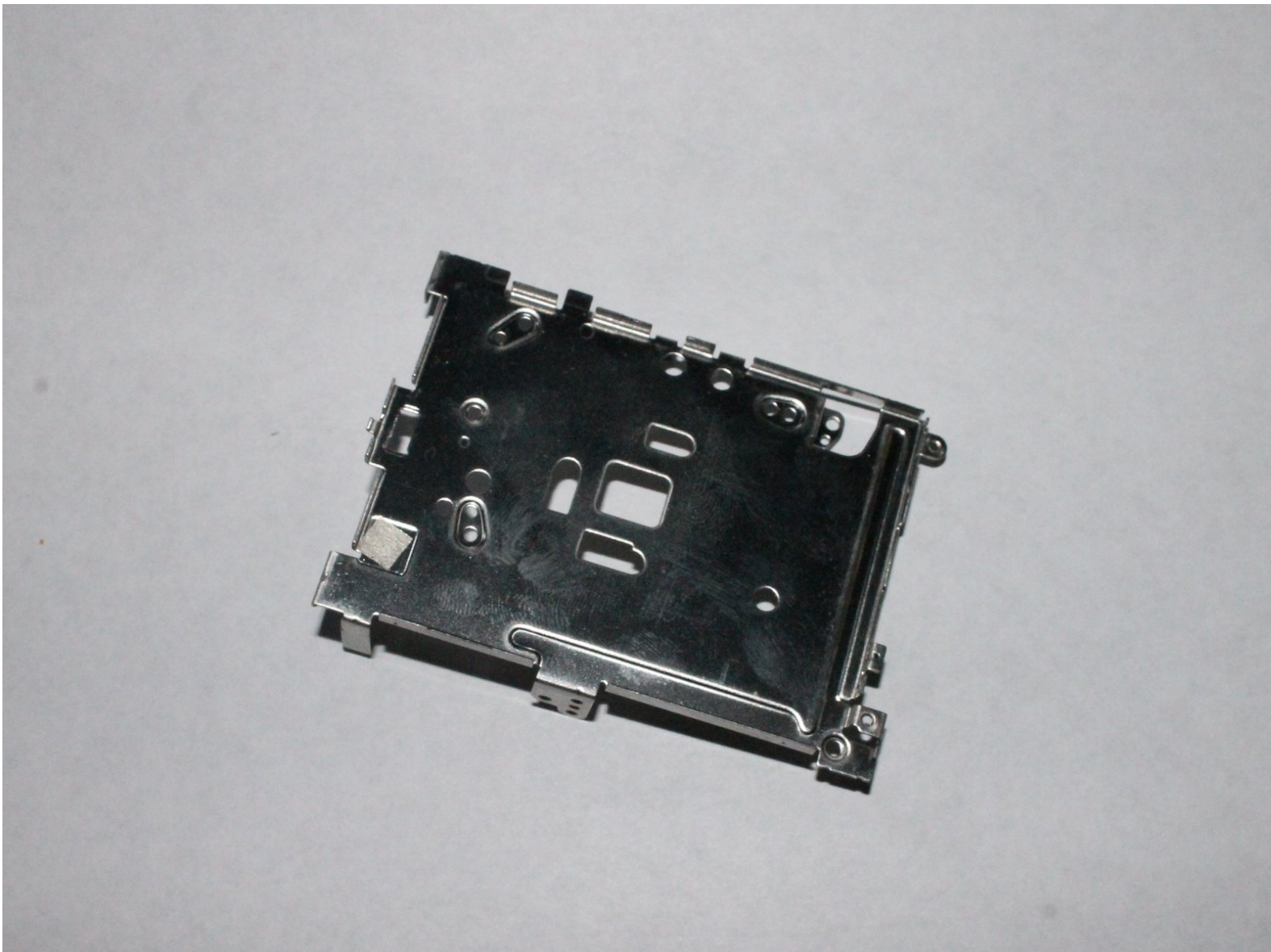


Disassembling Canon PowerShot A2500

Internal LCD Frame

This is the dis-assembly of the metal frame that holds all extra parts in the camera together such as the lens mechanism and the LCD display.

Written By: Victoria Winters



INTRODUCTION

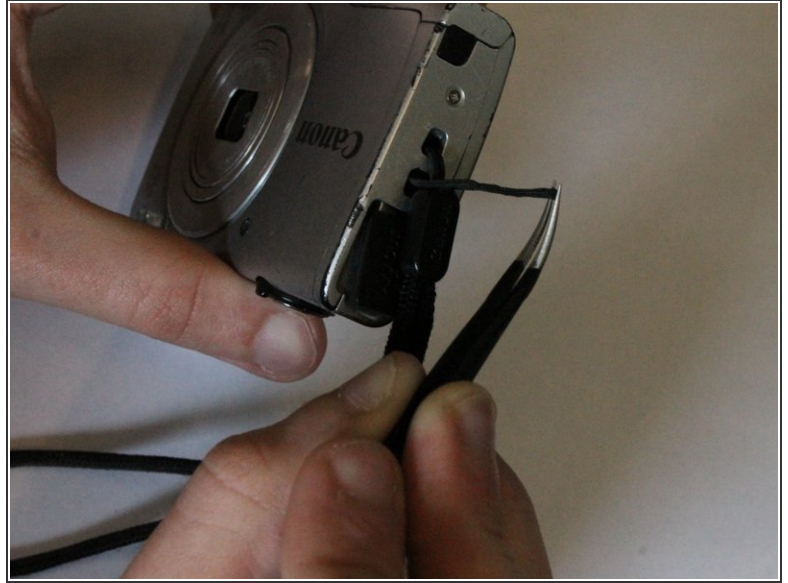
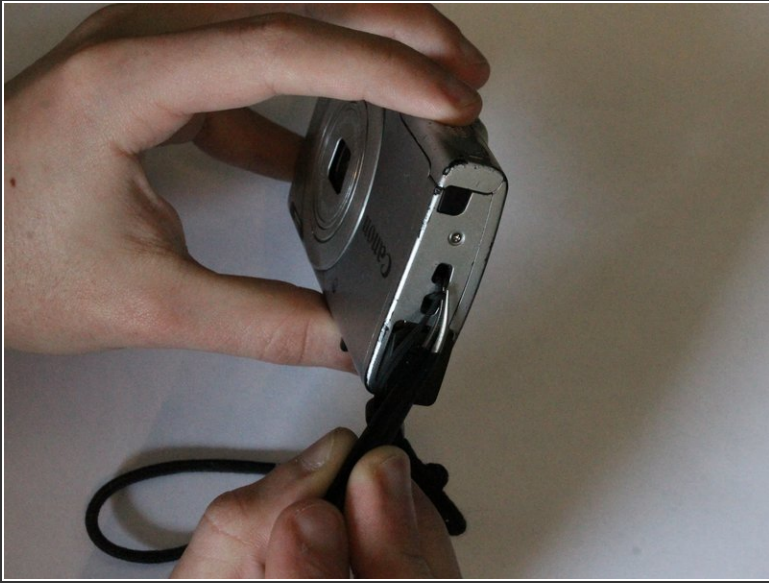
This is a dis-assembly only, and is a prerequisite to the replacement or repair of the LCD Display and/or the lens mechanism.



TOOLS:

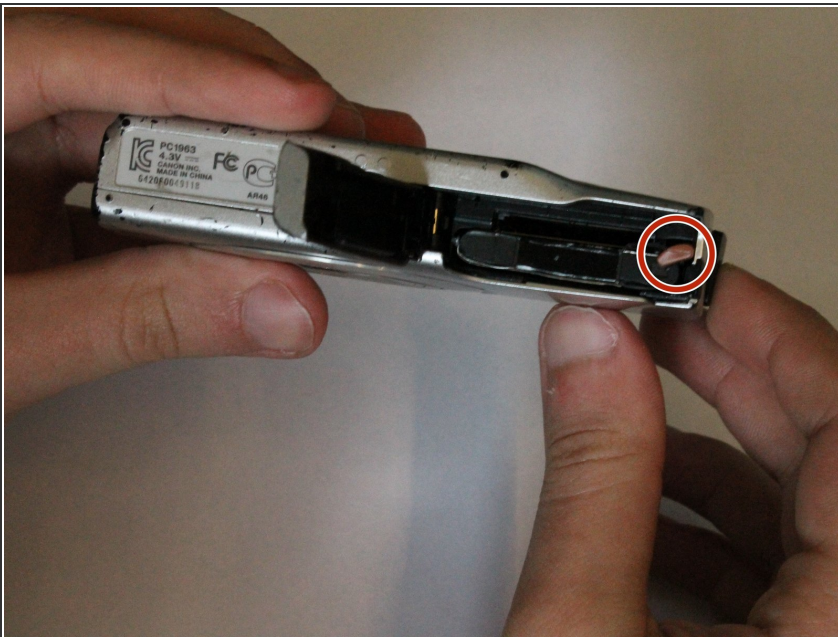
- [Tweezers](#) (1)
 - [Phillips #00 Screwdriver](#) (1)
 - [iFixit Opening Tools](#) (1)
-

Step 1 — Body Casing and Faceplate



- Remove the knot holding the wrist lanyard onto the camera

Step 2



- Open the latch at the bottom corner of the device to reveal the battery and SD card housing.
- There is an orange latch holding the battery in place which must be pushed back in order to free the battery.
- Once the battery is removed push the SD card and this will activate a spring ejecting the card from the camera.

Step 3



- Remove the 6 Phillips #00 exterior screws from the camera. Two are located on the bottom and two are located on either side as shown. Notice that one of the screws is under the AV Out Digital flap on the side. All exterior screws should be 2.4mm in length

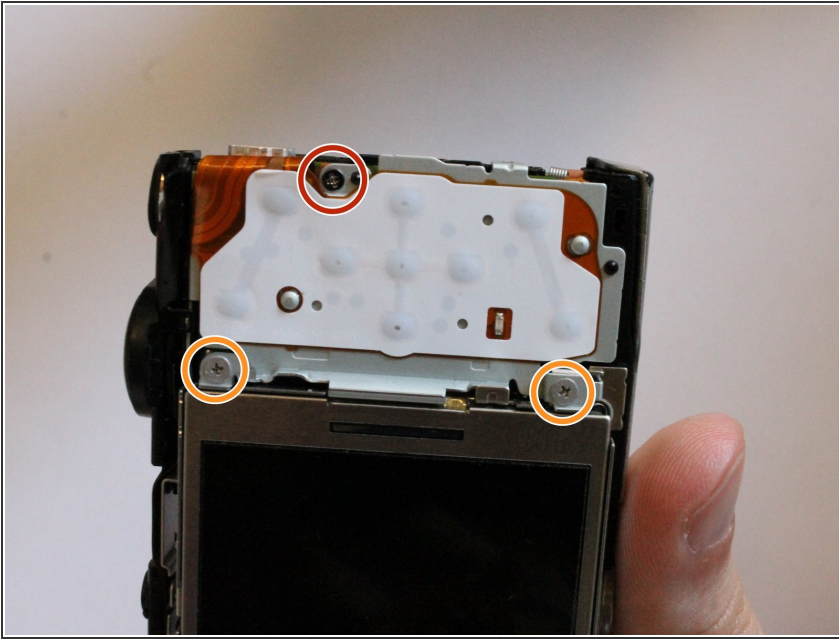
Step 4



- Pry apart the camera casing using the plastic opening tool tool provided. Once the casing has begun to separate pull the two sides apart with your hands.

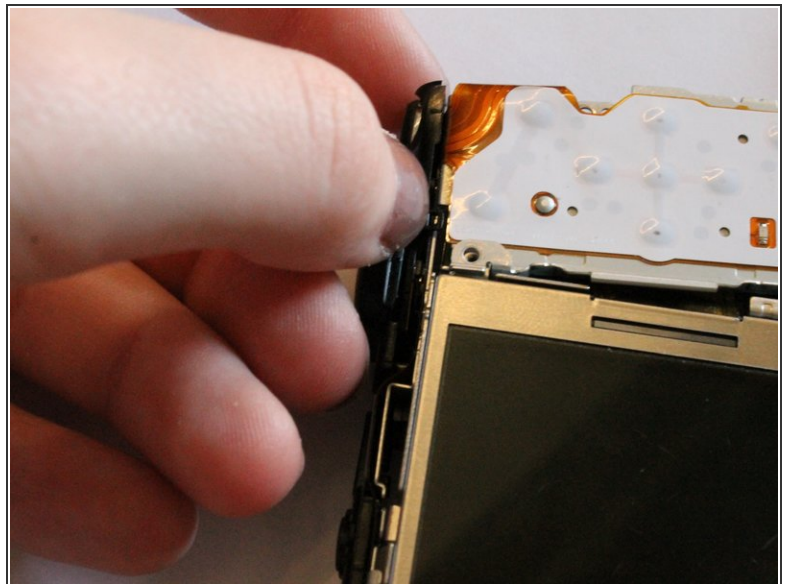
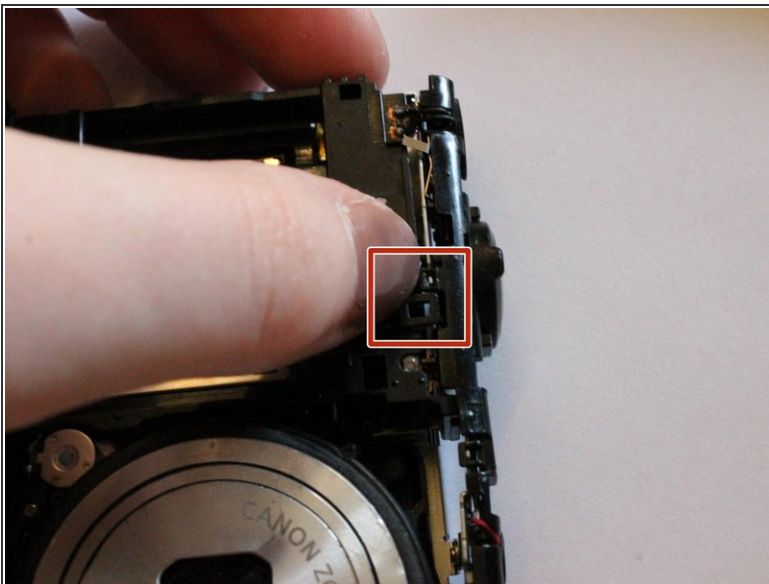
 Be careful not to bend the plastic casing to much, as it will crack.

Step 5 — Buttons



- Remove the single philips #00 screw on the button pad which are 2.2mm long. This screw is circled in red in the guide image.
- Next, remove the two 2.4mm long screws located in between the LCD screen and the touch pad. These screws will require a Phillips #00 screwdriver.

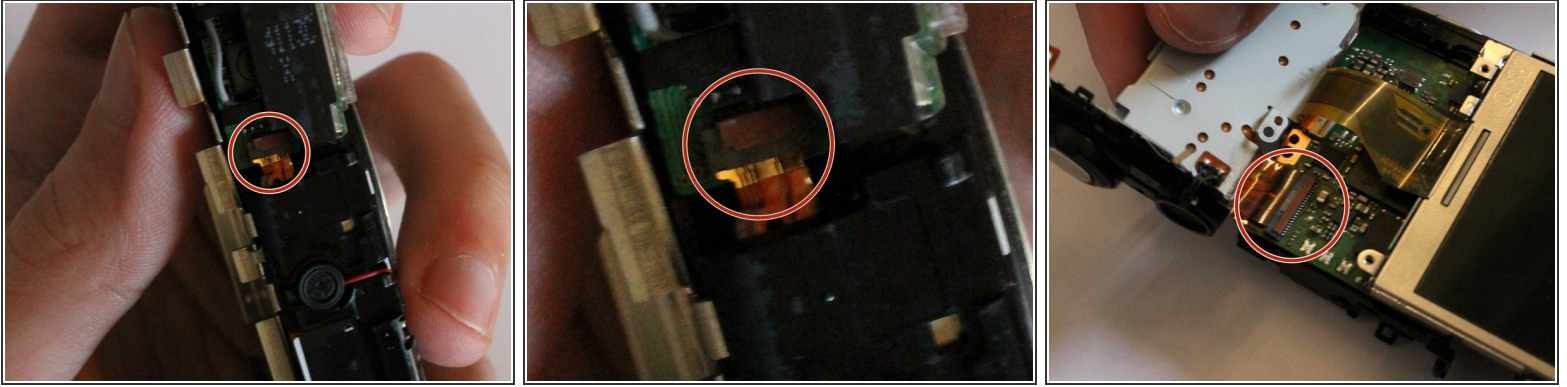
Step 6



- Pull the two clips off located near the power button

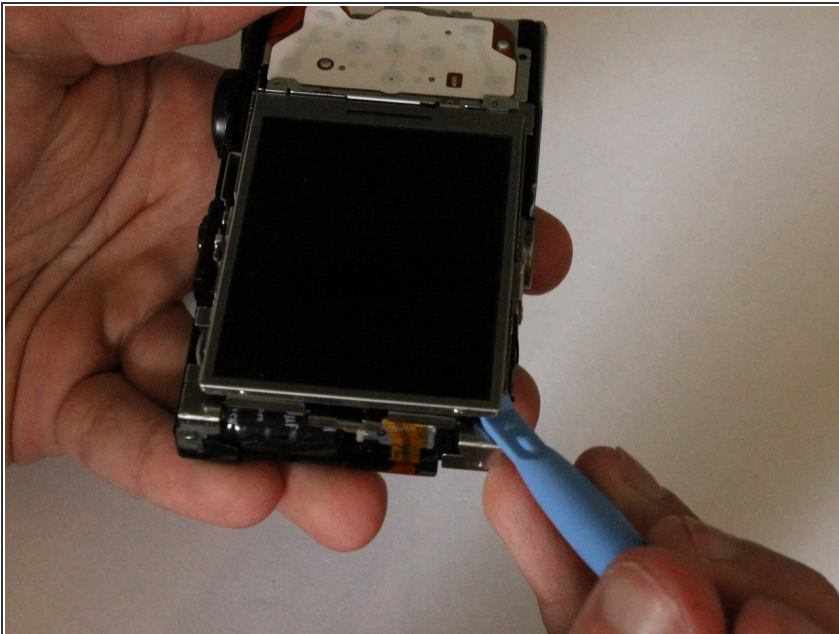
⚠ The clips are easily broken, use care while disconnecting these clips.

Step 7



- Remove the circuit ribbon connecting the flash to the camera in order to proceed to the next instruction.
- Carefully pull out the circuit ribbon from the camera which should be the last piece holding the button pad onto the camera.

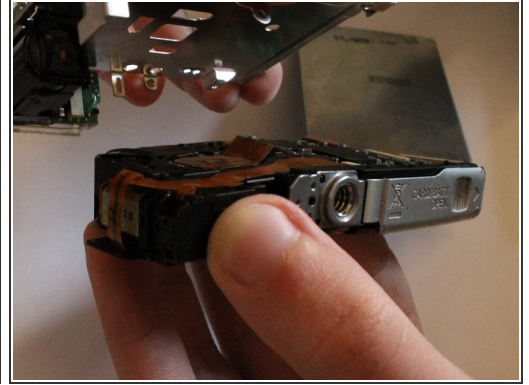
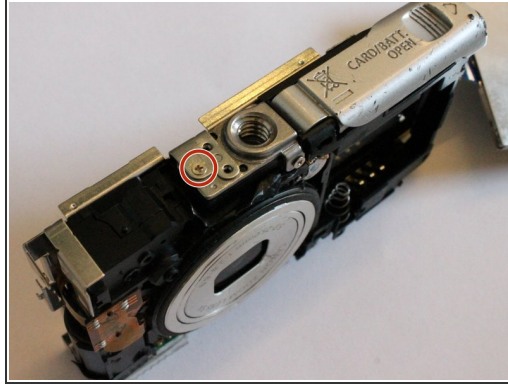
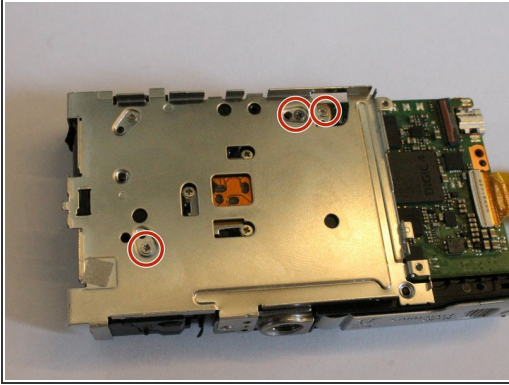
Step 8 — Internal LCD Frame



- Pop the LCD display out of its frame using the plastic opening tool in order to get to the screws under the

display. Use the plastic opening tool to complete this step

Step 9



- Remove the four following phillips #00 screws from the metal frame
- There should be two screws top right, one bottom left, and one on bottom of the frame
- ⓘ The screw dimensions should follow: Top right should be 2.3mm and 3.6mm long. Bottom left should be 3.6mm and the bottom of the frame should be 1.6mm

To reassemble your device, follow these instructions in reverse order.