



Motorola Moto E Rear Facing Camera Replacement

You will need to remove the outer back plastic...

Written By: Alex Craig



INTRODUCTION

You will need to remove the outer back plastic cover and the battery connection in order to access the motherboard and camera parts to do the replacement.

Before you begin, download the [Rescue and Smart Assistant](#) app to backup your device and diagnose whether your problem is software or hardware related.

TOOLS:


[Spatule en métal](#) (1)


[Outil pour ouvrir iFixit](#) (1)

[Tournevis Torx T4](#) (1)

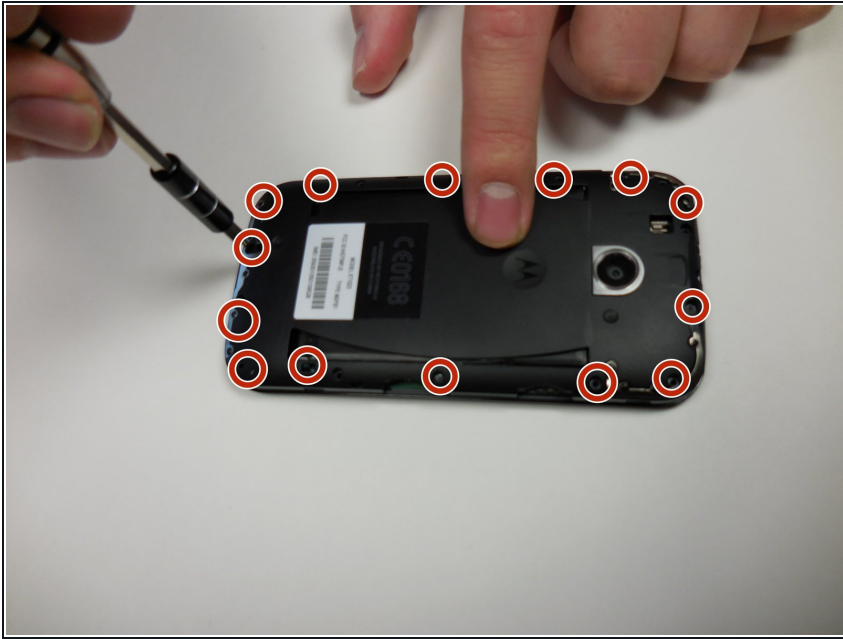
Step 1 — Motherboard



 **Turn off the device before beginning.**

- To remove the back cover, start at one corner and stick the plastic opening tool under the cover and pry it away from the phone.
- With the plastic opening tool, pry all the way around the phone while lifting up on the cover.
-  You should hear a snapping sound at each corner.

Step 2



- Unscrew the 14- 4mm screws using a T4 Torx driver head.
- ⓘ Working on a magnet board is recommended as the screws are small and can be easily misplaced.

Step 3



- Using the same plastic opening tool as in step 1, once again pry up on the edges of the plastic back cover.
- ⓘ Be sure that all of the screws are out before lifting the cover. The plastic backing is fragile, and it may break.

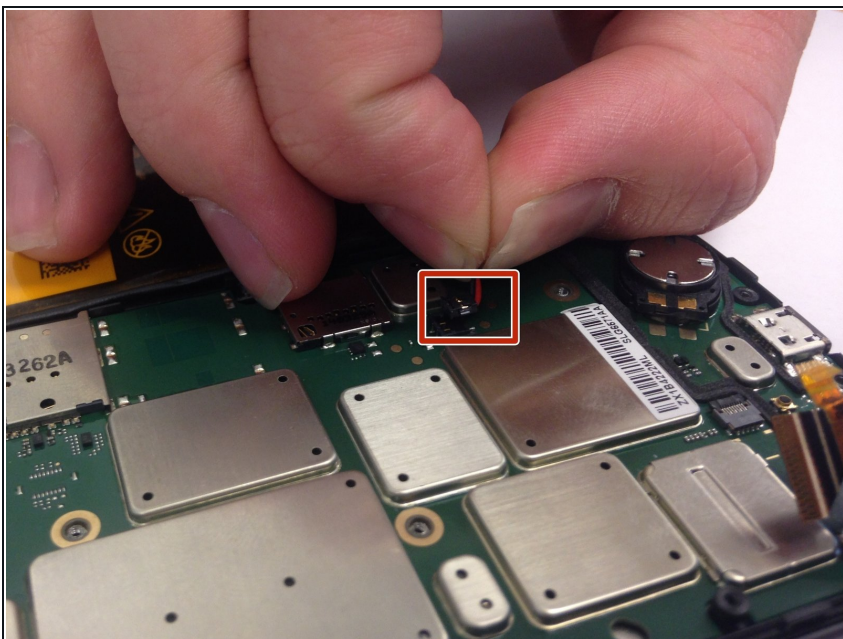
Step 4



- Gently lift the back plate away, exposing the motherboard. The battery will be stuck to the back of the cover, so be careful when lifting it off.

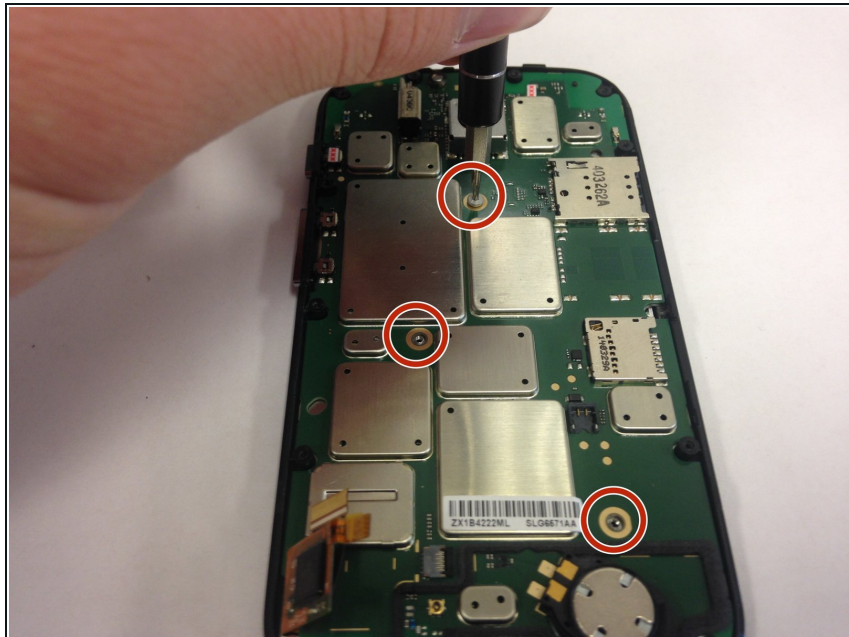
⚠ Do not touch the connections to the battery in the red square on the picture.

Step 5



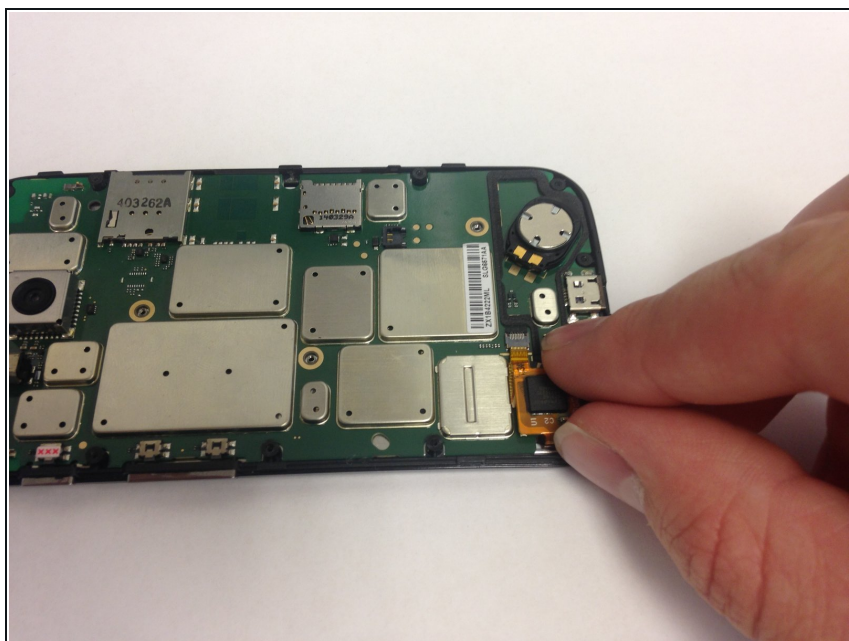
- Gently pull up on the red and black power cable to lift the connector out of the motherboard.
- Move the battery and cover away from the motherboard.

Step 6



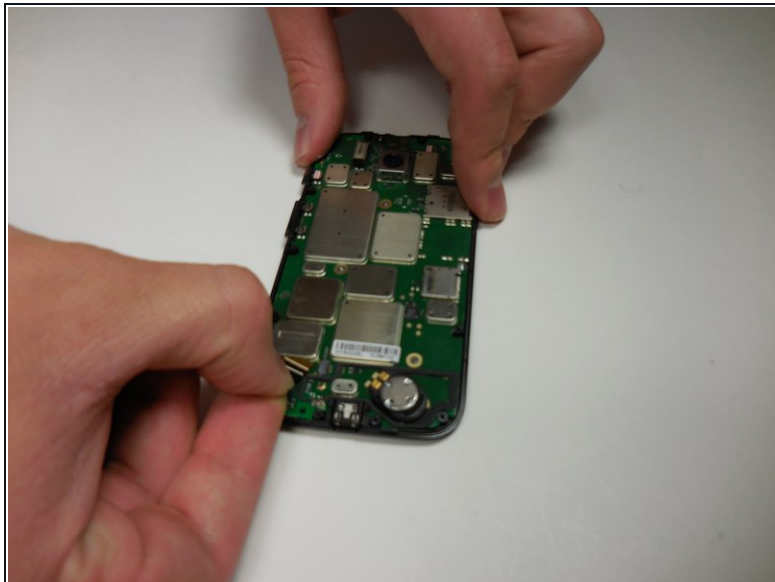
- Unscrew the 3- 1mm screws using the T4 torx driver head.

Step 7



- Lift up on the white plastic mount.
- Pull the orange ribbon cable out gently.

Step 8



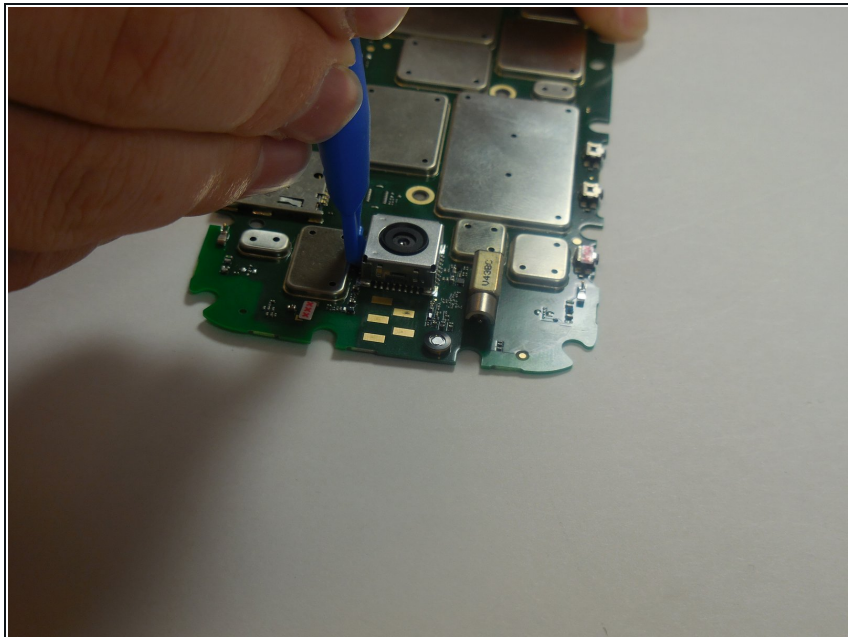
- Gently pull the black ribbon cable out.

Step 9



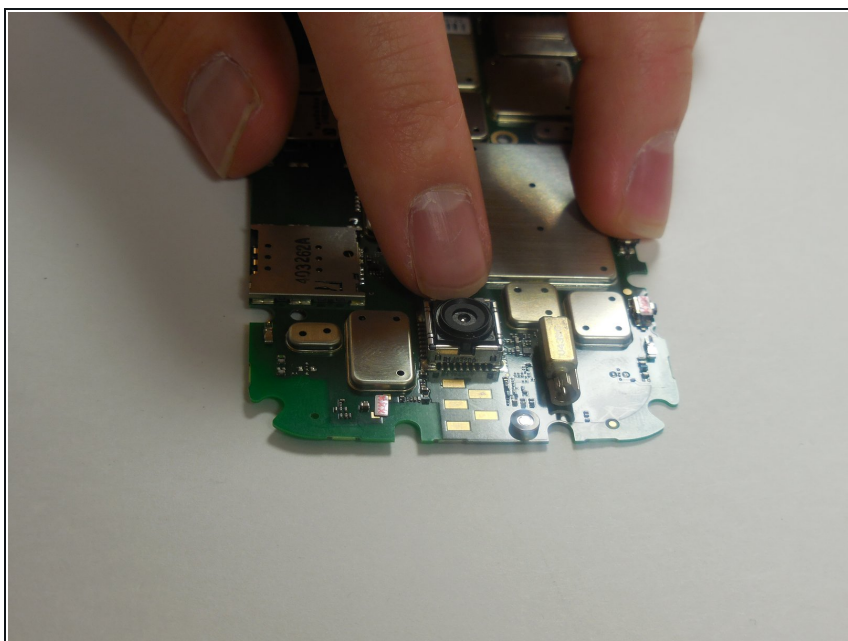
- Using the metal spudger, pry the motherboard away from the screen assembly.

Step 10 — Rear Facing Camera



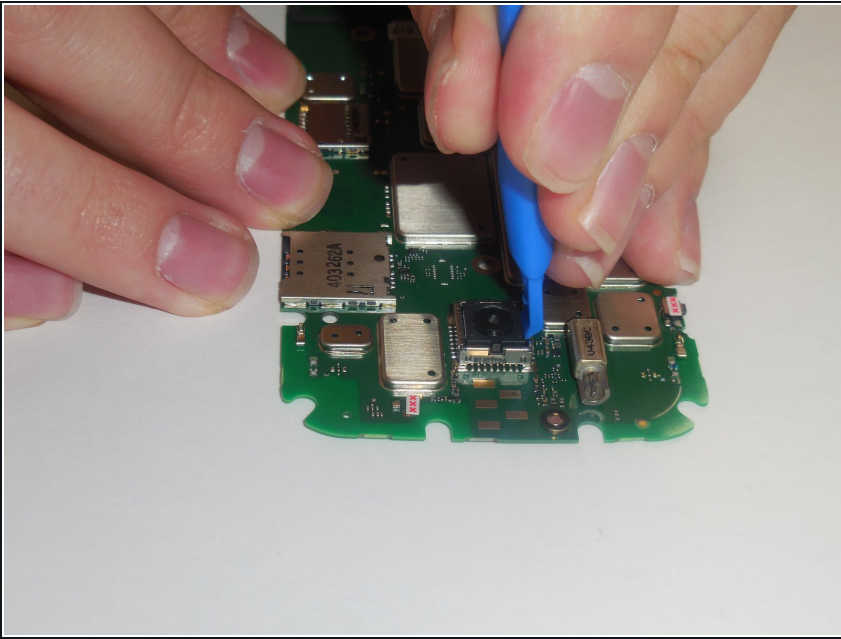
- Use the plastic opening tool to pry the metal housing off.

Step 11



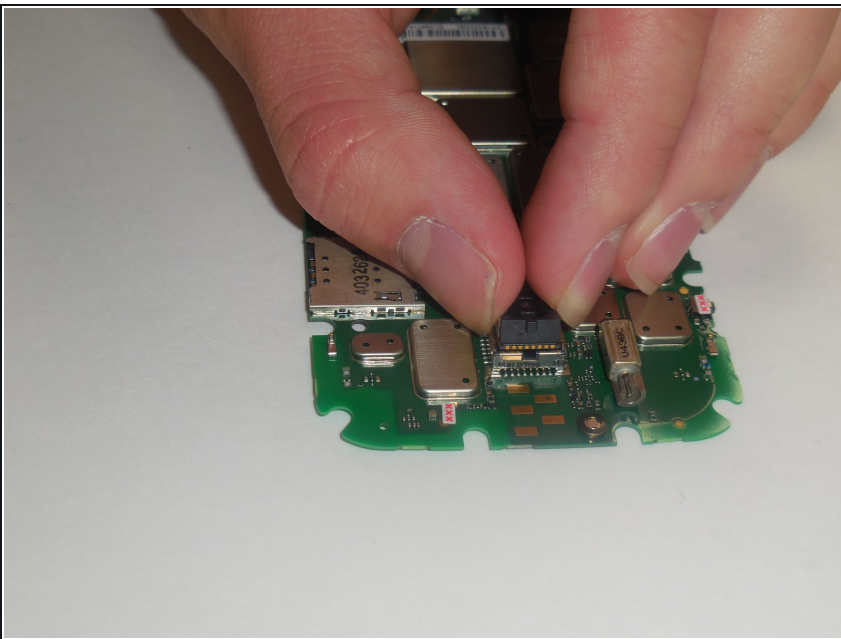
- Remove the rubber cover on the camera by gently lifting it up.

Step 12



- Use the same plastic opening tool to pry the camera assembly off.
- Use the plastic opening tool on all four sides of the camera several times until it starts to come loose.

Step 13



- Pull the camera assembly out.
- Place the new camera assembly into the connector and press gently.

To reassemble your device, follow these instructions in reverse order.