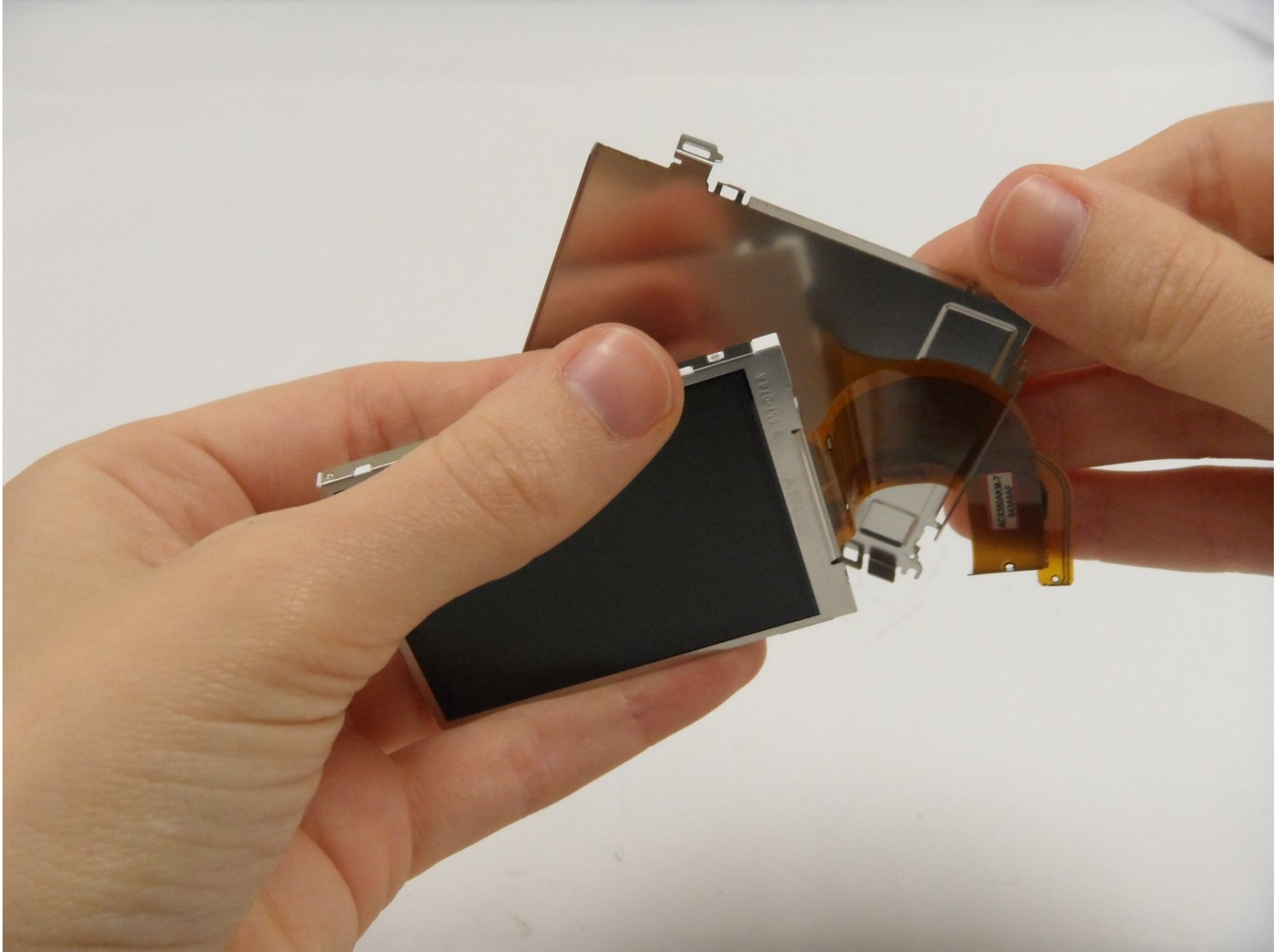




Canon PowerShot A540 LCD Screen Replacement

If your LCD screen is cracked, broken,...

Written By: Carley Fuller



INTRODUCTION

If your LCD screen is cracked, broken, unresponsive, or otherwise damaged, you may need to replace it. After removing the back cover, you will have access to the LCD screen to replace it.

TOOLS:

Phillips #000 Screwdriver (1)

Tweezers (1)

Step 1 — Back Cover



- Turn off the camera.
- Turn the camera upside-down and press the tab to release the battery cover. Remove the batteries.

Step 2



- Turn the camera upside down to view the "Card/Batt. Open" Cover.
- Use a Phillips head #000 screwdriver to remove the three (3) 4.0 mm screws.

Step 3



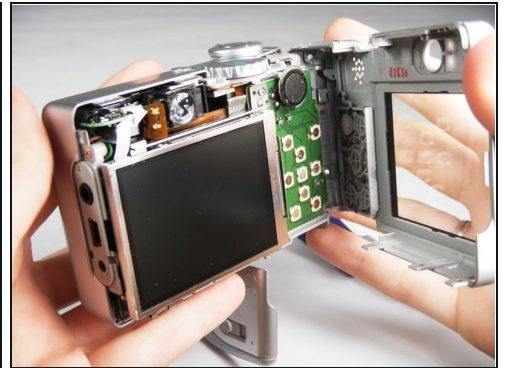
- Open "Card/Batt. Open" Cover.
- Remove the one (1) 5.0 mm screw with the Phillips head #000 screwdriver.

Step 4



- Turn the camera to the right side of the LCD screen.
- Remove the three (3) 4.0 mm screws with the Phillips head #000 screwdriver.

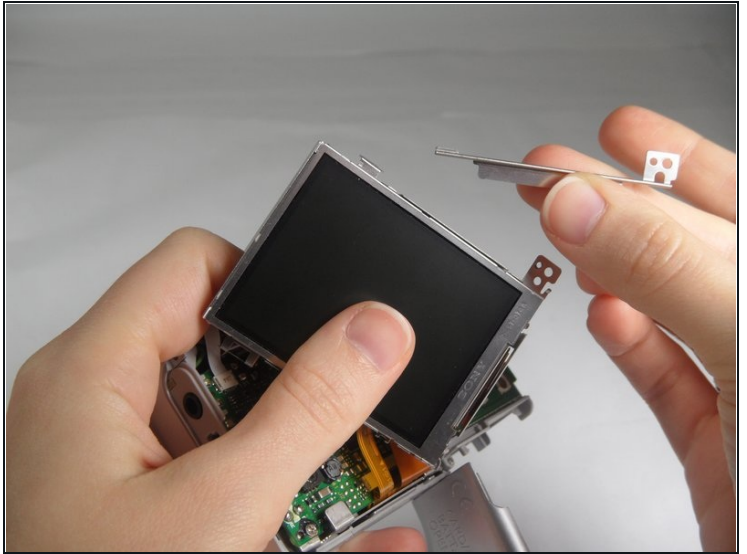
Step 5



- Gently remove the back cover.
- Start at the bottom at the corner of the "Card/Batt. Open" Cover.
- Then move onto the other edges and the top.

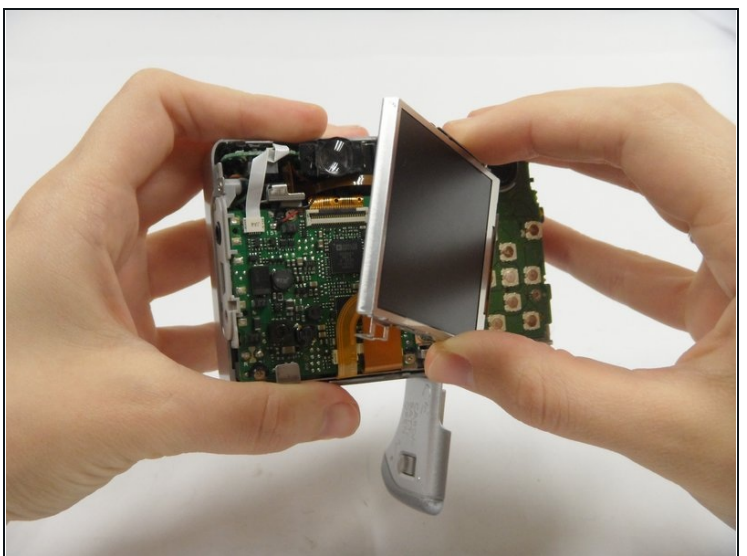
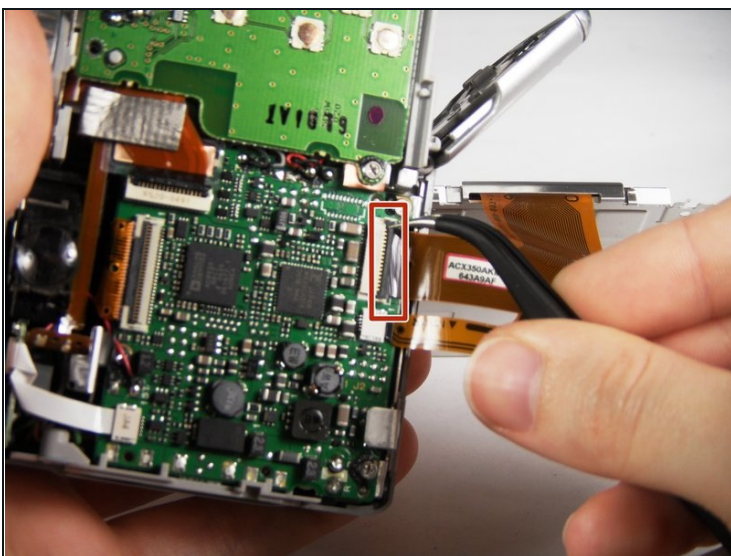
① It may be tight at the top!

Step 6 — LCD Screen



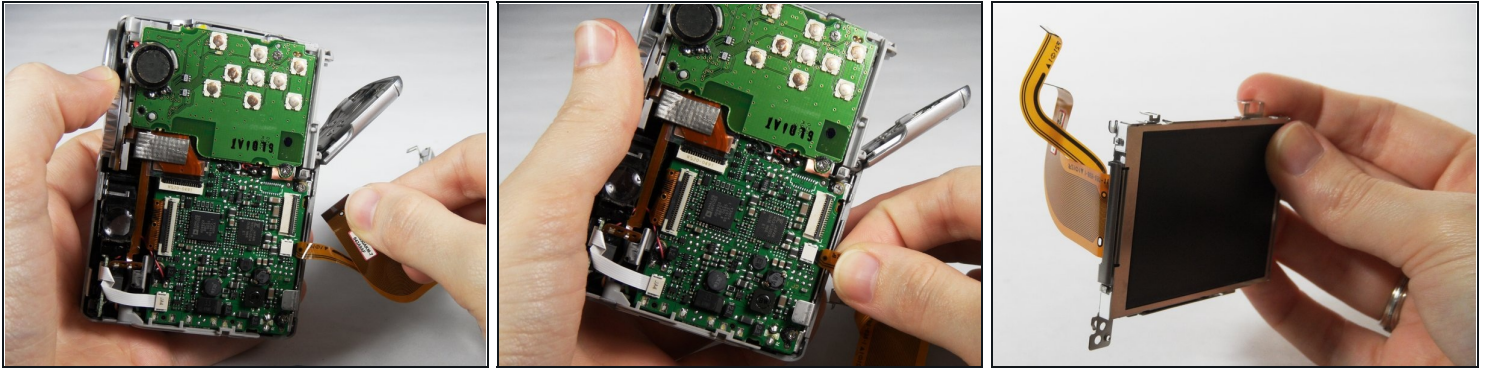
- Turn the camera to view the back.
- Remove the one (1) 3.0 mm screw on the top right corner of the screen.
- ① There is a small metal bar that rests on this frame. Keep it with the screws that have been removed from the camera.

Step 7



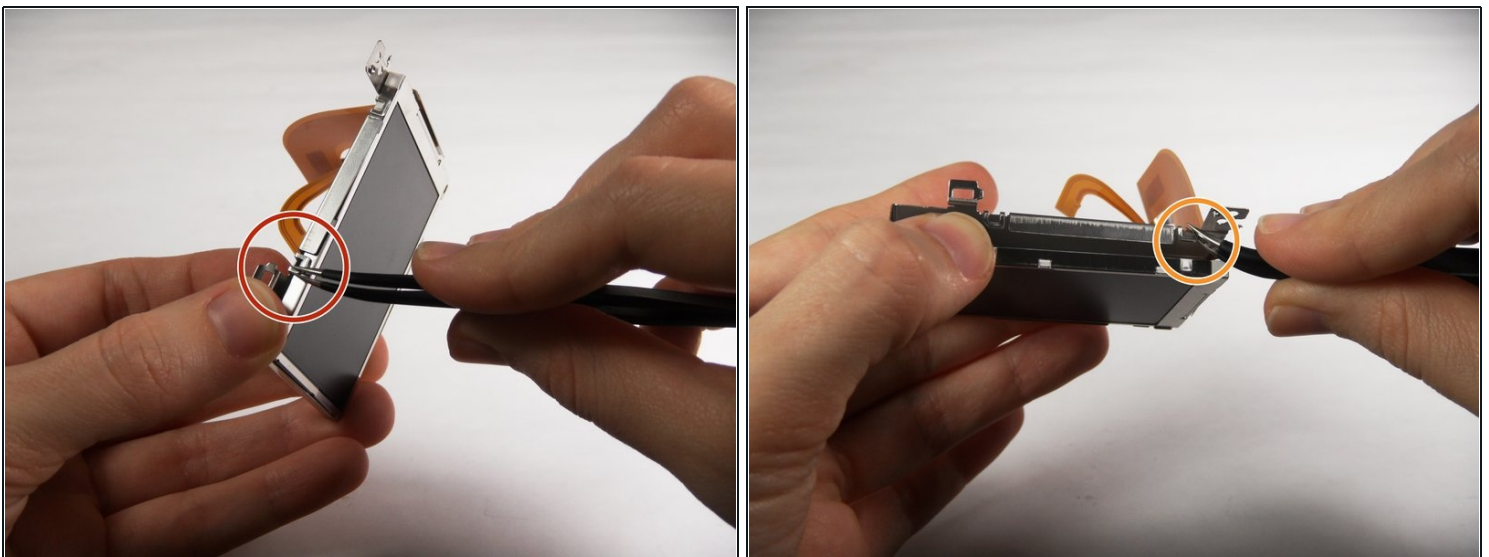
- Lift the LCD Screen off of the back to view the attached ribbon cables.
- Use [tweezers](#) to flip the black bar up.

Step 8



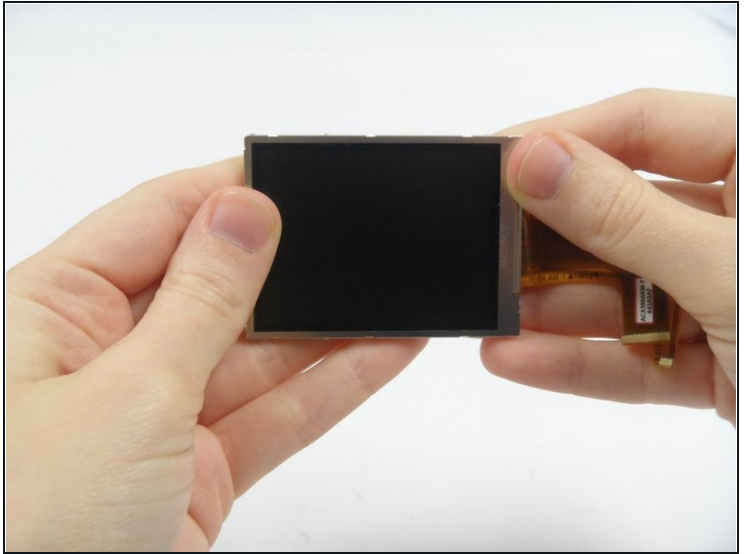
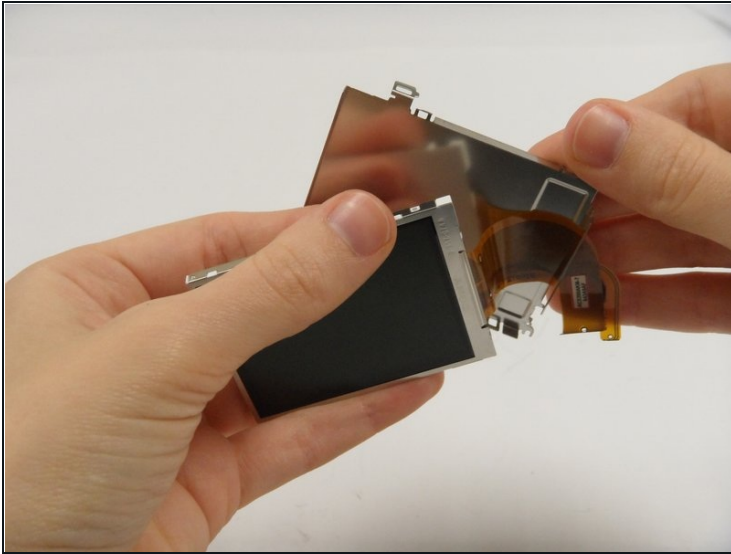
- Gently pull the big ribbon out.
 - Gently pull the small ribbon out.
- ⓘ The small ribbon does not have a bar like the big ribbon.

Step 9



- Use tweezers at the top left of the LCD Screen to wedge the top left of the Outer Frame loose.
- ⓘ Use your thumb to hold the Outer Frame open.
- Use the tweezers at the top right of the LCD Screen to wedge the top right of the Outer Frame loose.

Step 10



- Slide the LCD Screen out from the Outer Frame.

To reassemble your device, follow these instructions in reverse order.