



Fujifilm FinePix XP10SE Rear Control Panel Replacement

This guide will help you to replace a broken or faulty rear control panel.

Written By: Bryan

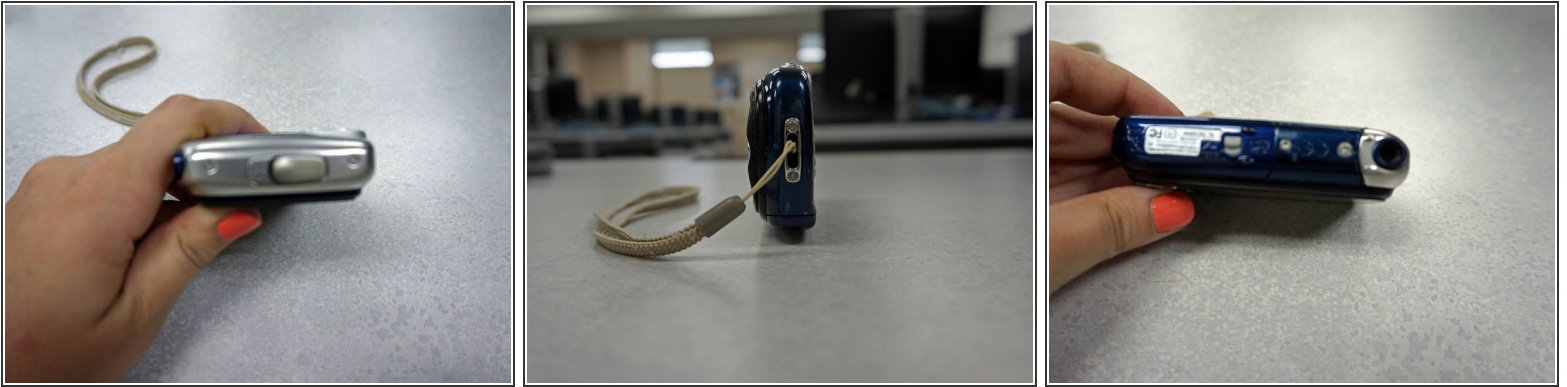




TOOLS:

- [T5 Torx Screwdriver](#) (1)
 - [Phillips #00 Screwdriver](#) (1)
 - [iFixit Opening Tools](#) (1)
 - [Phillips #000 Screwdriver](#) (1)
-

Step 1 — Front Cover



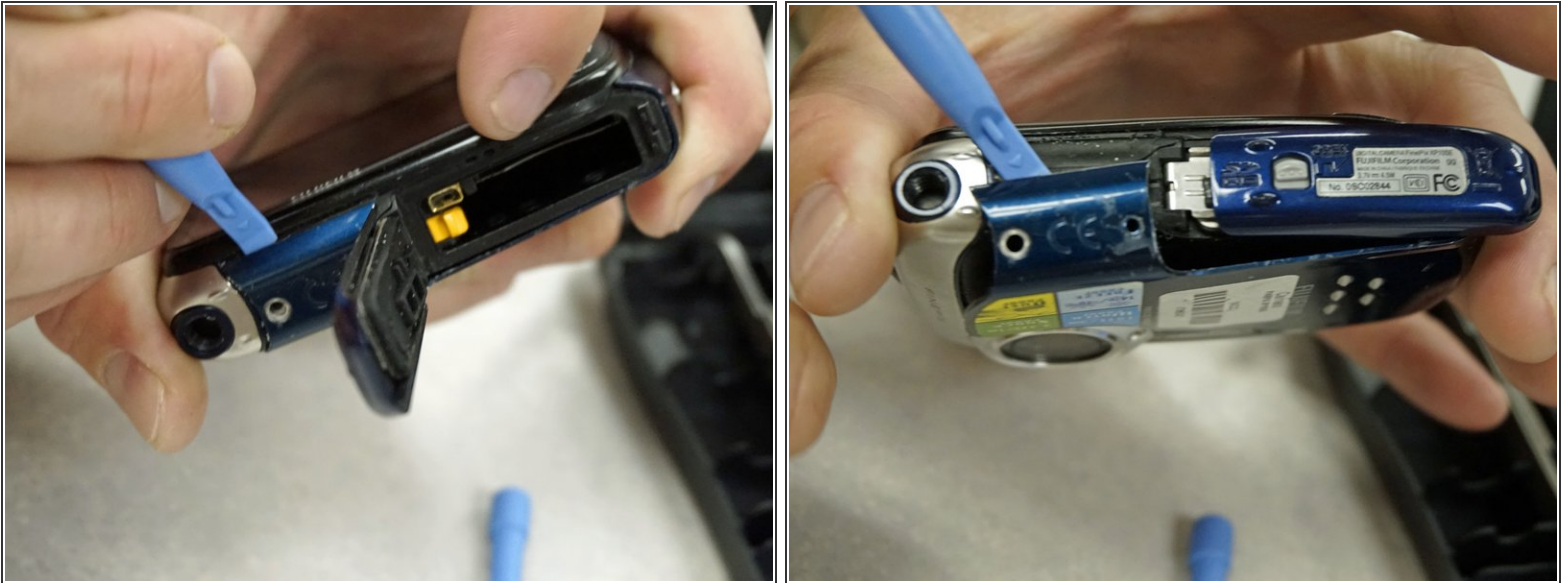
- Use a screwdriver to remove the four screws from the top and bottom of the camera. Remove the screws securing the lanyard as well.
- Use a T5 Torx bit to secure the exterior decorative cover of the device.

Step 2



- Use a plastic opening tool to detach the case.

Step 3



- Use the plastic opening tool to cautiously pry the casing off of the camera.

Step 4



- Carefully slide the case to the left. Avoid cracking the case on the lens.

Step 5 — Lens



- Remove the screws from the lens cover

Step 6



- Remove the screws from the side metal cover of outer case.

Step 7



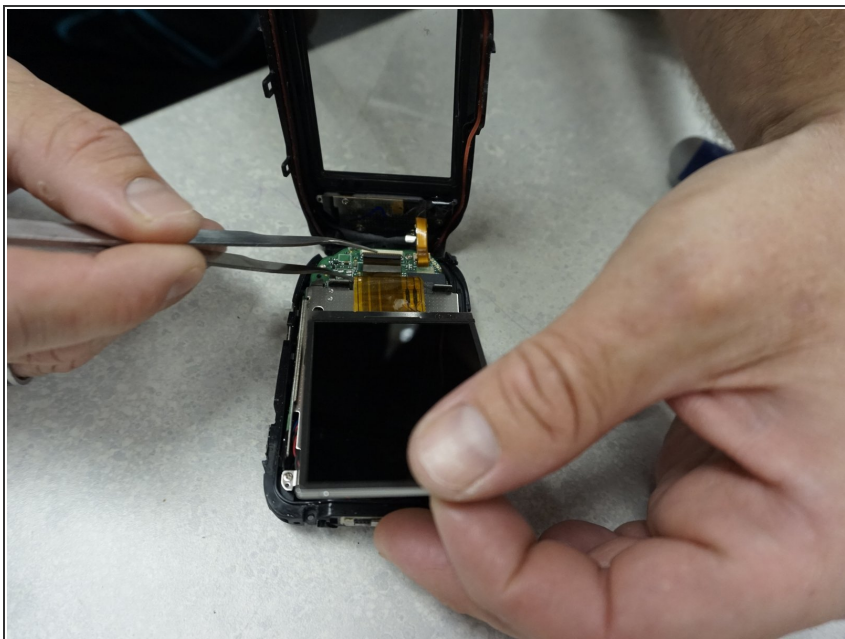
- Gently remove the Lens from the housing.

Step 8 — LCD



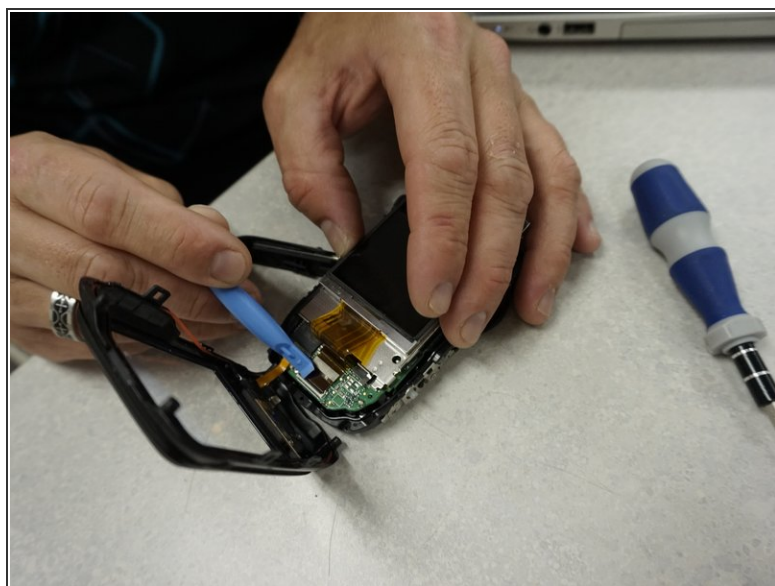
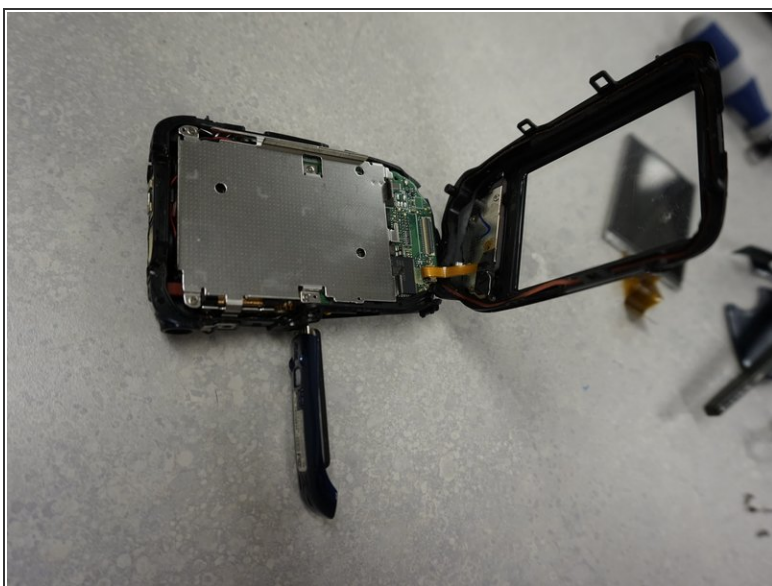
- Locate the securing tabs of the housing unit.
- Using the spongers slowly work your way around the outside of the case using the sponging tool to pry open the case.
- *** Take extreme caution when doing this being careful not to break the securing tabs of the housing.

Step 9



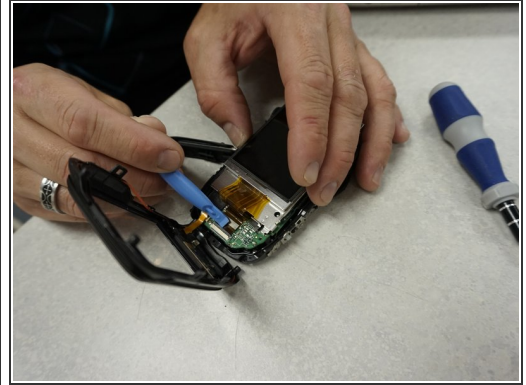
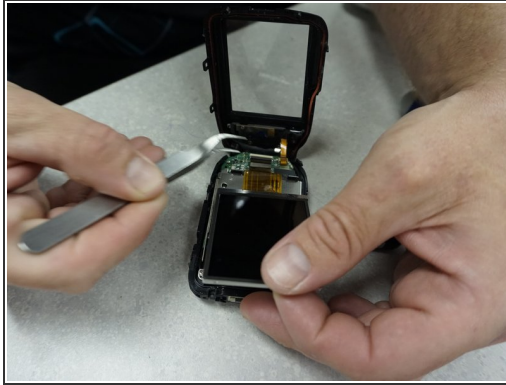
- Once the case is open locate the Ribbon cable attachment for the LCD screen.
- Carefully ensure that the LCD screen is free from all attachments and any tape securing the ribbon cable is released.

Step 10



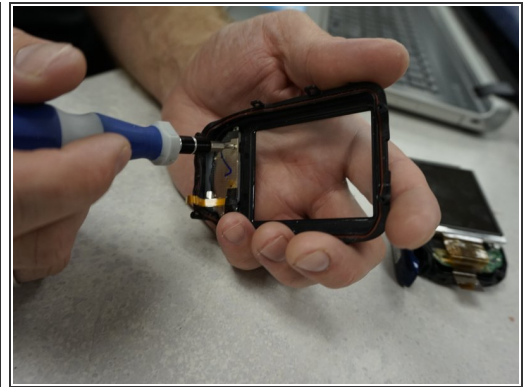
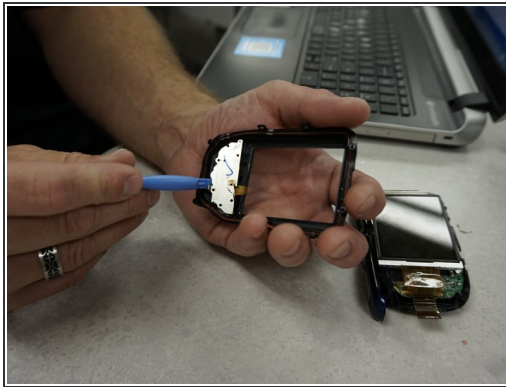
- Gently lift up on the black securing bar of the ribbon cable in order to free it from the units motherboard, thus releasing the LCD from the computer.

Step 11 — Rear Control Panel



- Locate the ribbon cable attachment for the rear panel controls.
- Gently lift the ribbon cable securing bar and slide the ribbon cable from the socket in order to remove the rear control panel.

Step 12



- Locate the six screws on the control panel.
- **two of the screws may be covered by tape. Remove the tape to access them.
- Use the PH000 Phillip's screwdriver bit from the iFixit driver kit to remove the screws and free the control panel from the unit.

To reassemble your device, follow these instructions in reverse order.