



Fujifilm FinePix XP10SE LCD Replacement

This will help guide you to replacing the LCD screen for this camera.

Written By: Bryan





TOOLS:

- [iFixit Opening Tools](#) (1)
- [T5 Torx Screwdriver](#) (1)

Step 1 — Lens



- Remove the screws from the lens cover

Step 2



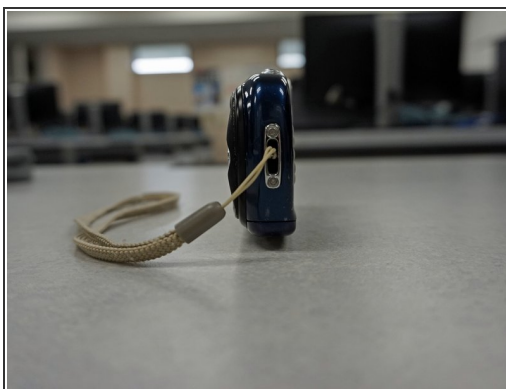
- Remove the screws from the side metal cover of outer case.

Step 3



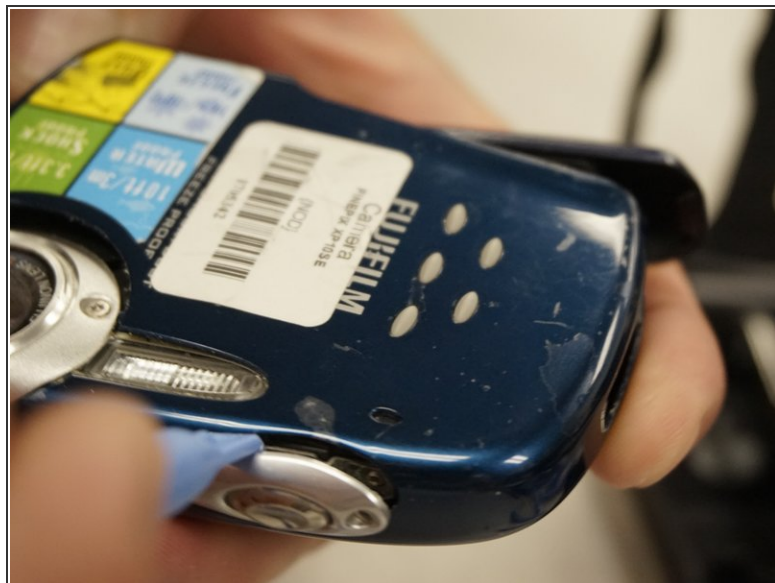
- Gently remove the Lens from the housing.

Step 4 — Front Cover



- Use a screwdriver to remove the four screws from the top and bottom of the camera. Remove the screws securing the lanyard as well.
- Use a T5 Torx bit to secure the exterior decorative cover of the device.

Step 5



- Use a plastic opening tool to detach the case.

Step 6



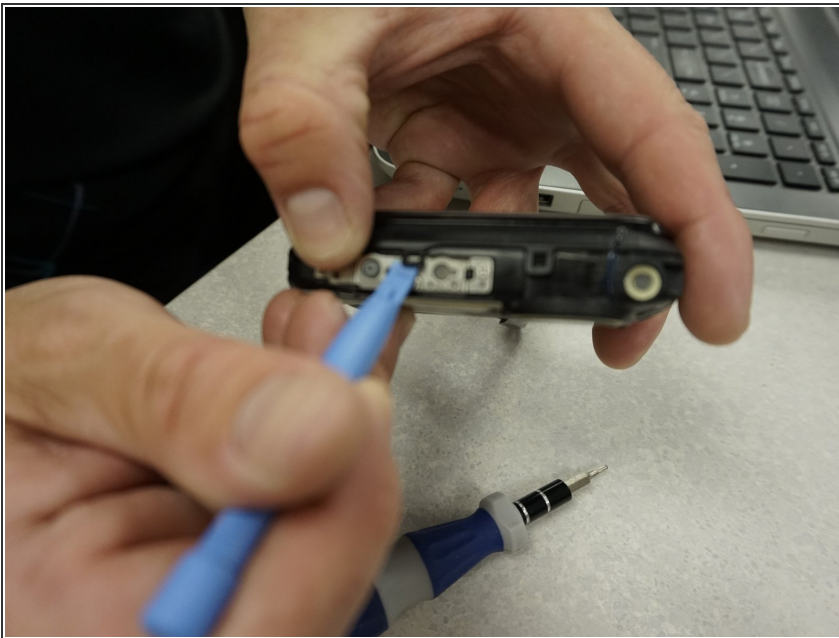
- Use the plastic opening tool to cautiously pry the casing off of the camera.

Step 7



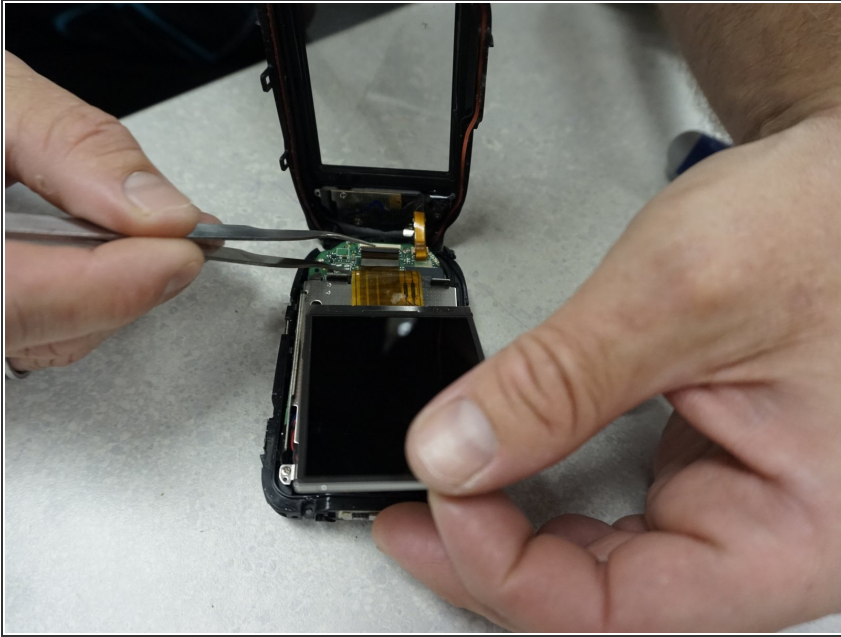
- Carefully slide the case to the left. Avoid cracking the case on the lens.

Step 8 — LCD



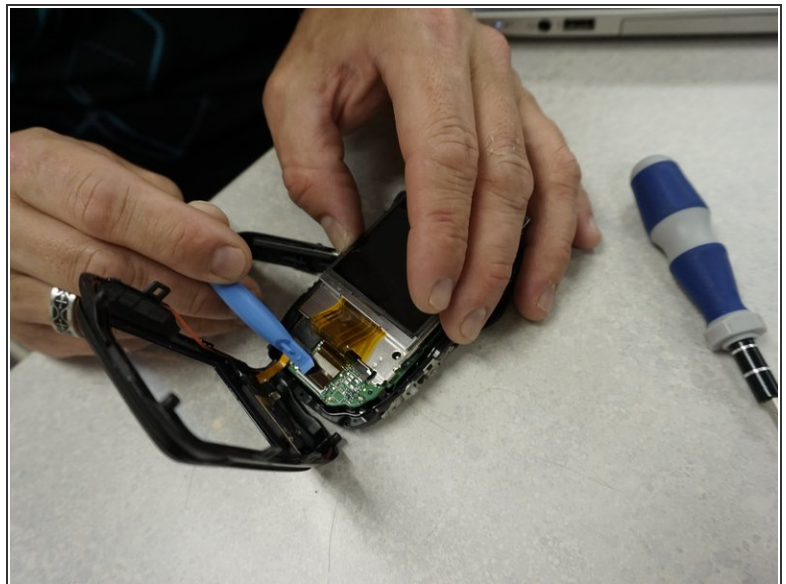
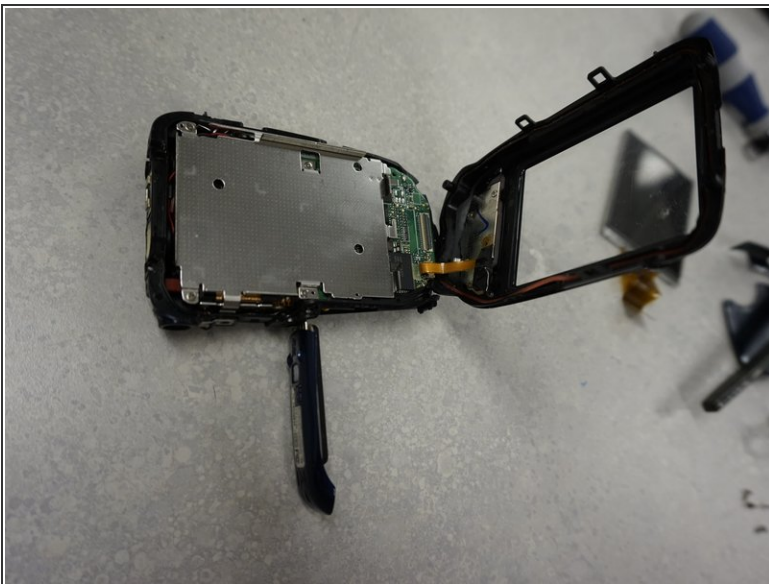
- Locate the securing tabs of the housing unit.
- Using the spongerslowly work your way around the outside of the case using the sponging tool to pry open the case.
- *** Take extreme caution when doing this being careful not to break the securing tabs of the housing.

Step 9



- Once the case is open locate the Ribbon cable attachment for the LCD screen.
- Carefully ensure that the LCD screen is free from all attachments and any tape securing the ribbon cable is released.

Step 10



- Gently lift up on the black securing bar of the ribbon cable in order to free it from the units motherboard, thus releasing the LCD from the computer.

To reassemble your device, follow these instructions in reverse order.

This document was generated on 2020-11-27 09:52:20 PM (MST).

