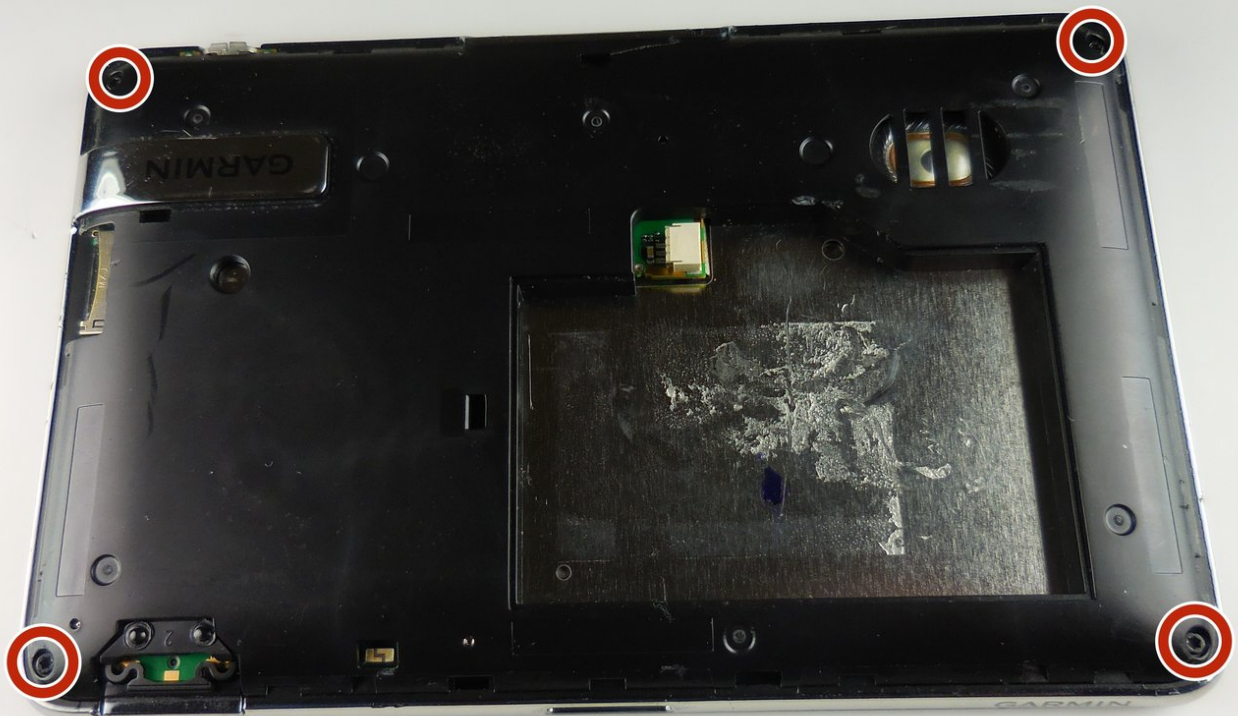




Garmin nüvi 3590 LMT Glass Screen Replacement

Replace the glass screen in case of cracks for your Garmin nüvi 3590 LMT.

Written By: Kayla Katz



INTRODUCTION

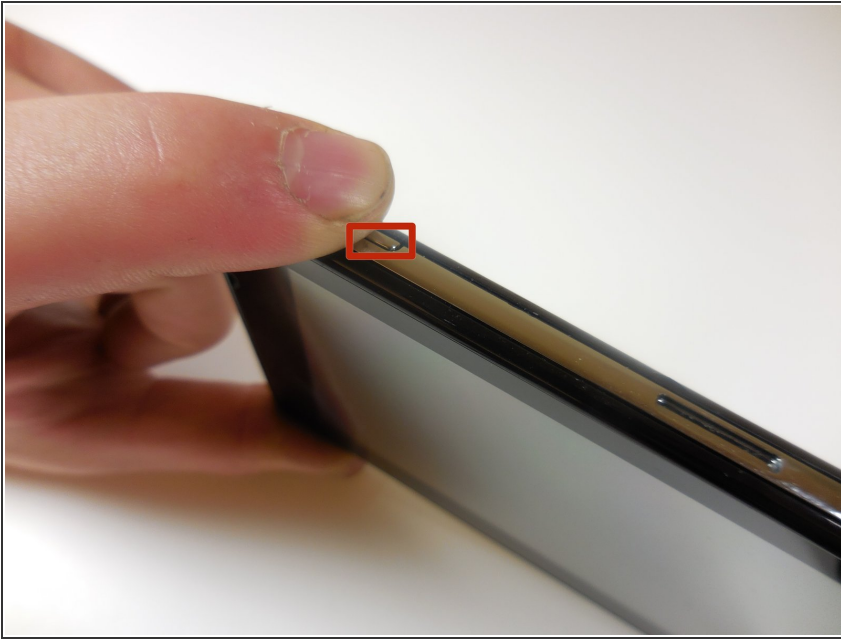
Remove the battery to avoid electrocution when working on the device. Be careful to not cut yourself if the screen is cracked.



TOOLS:

- [T5 Torx Screwdriver](#) (1)
 - [Heavy-Duty Spudger](#) (1)
 - [Metal Spudger](#) (1)
 - [iFixit Opening Tools](#) (1)
-

Step 1 — Battery



- Turn the device off by pressing and holding the power button on the top left of the device.

Step 2



- Use the plastic opening tool to separate the tabs on the black back cover of the device by leveraging the tool against the frame around the perimeter of the device.

Step 3



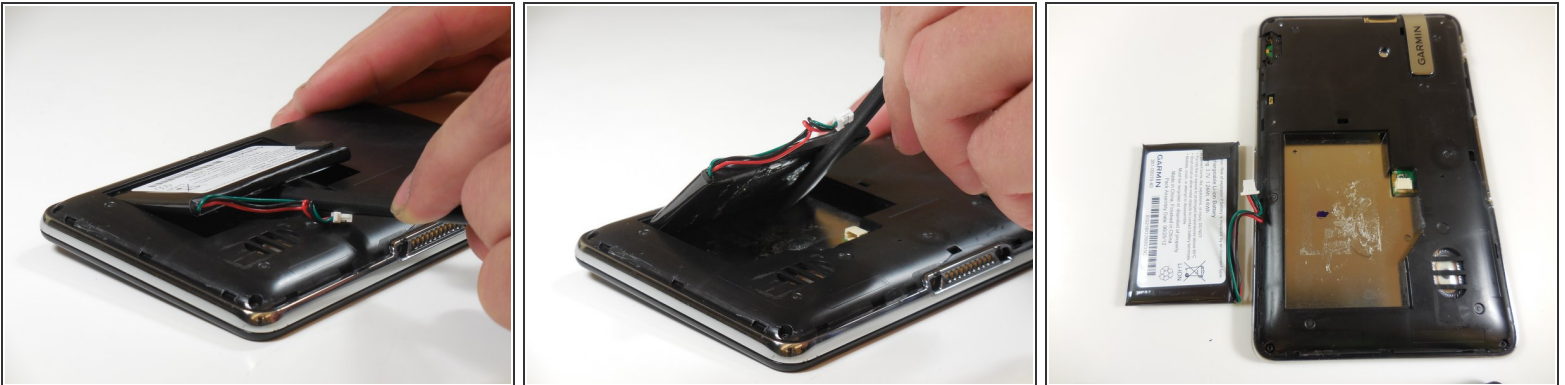
- Once all of the tabs are popped out, take the back cover off.
- ⓘ The back cover is a separate piece from the device.

Step 4



- Using the plastic spudger, carefully remove the white tab connected to the battery from the device by pulling the tab in the opposite direction from which it is connected.

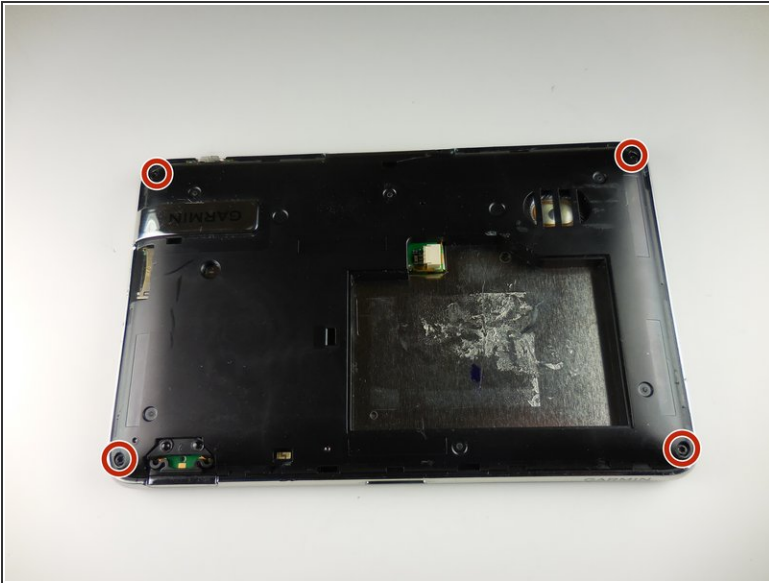
Step 5



- Use the plastic spudger to lift the battery up and away from the device.

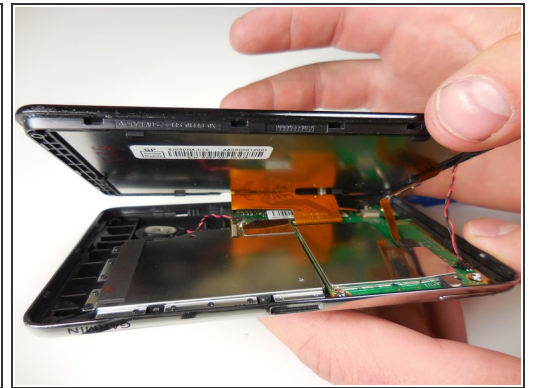
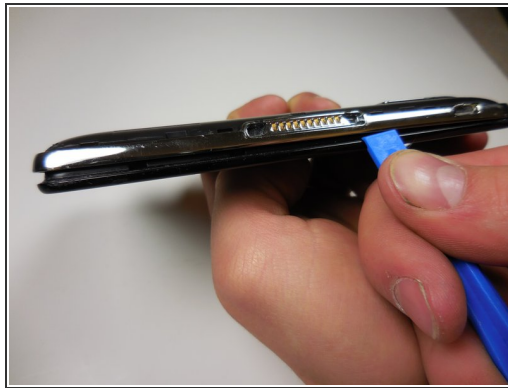
⚠ Do not puncture or bend the battery. Serious health complications could occur.

Step 6 — Glass Screen



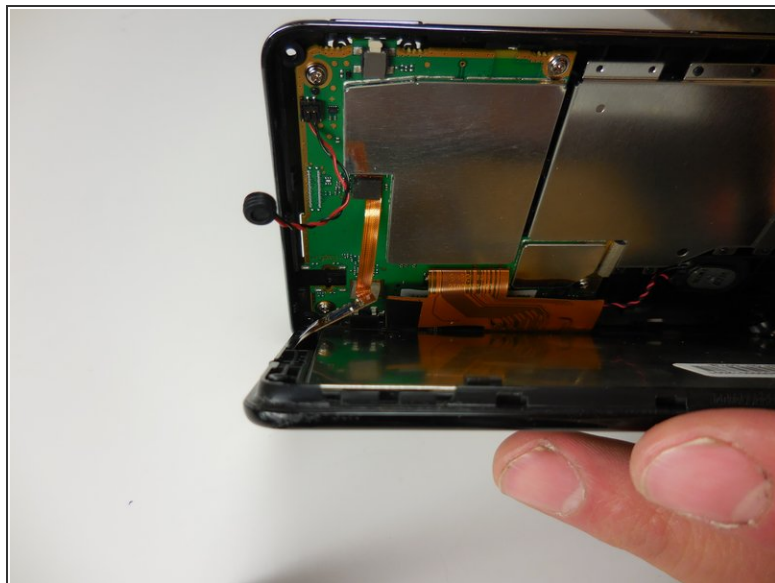
- Using the T5 bit, unscrew the four 5.7mm screws in the four corners on the back of the device.

Step 7



- Use the plastic opening tool to leverage up on the tabs between the black screen and the metal frame.
- ⓘ Do not forcibly separate the two pieces after the tabs have been popped. There are connections between the two pieces that could be torn.

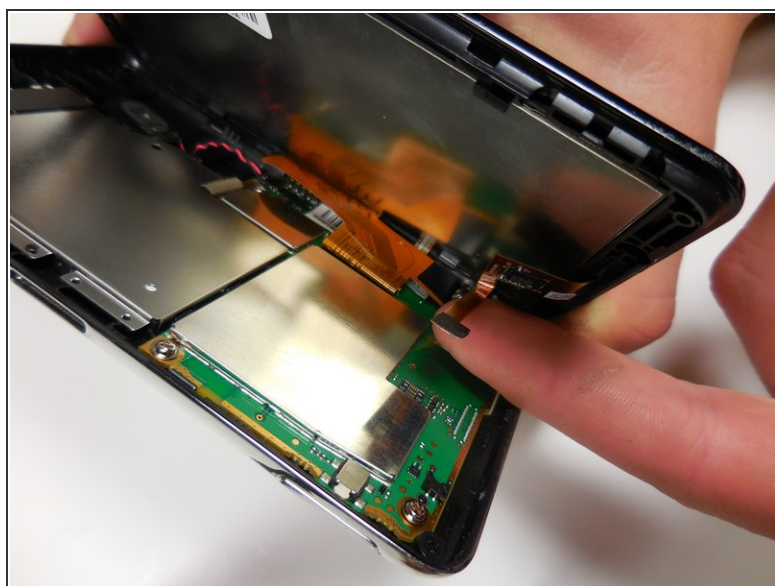
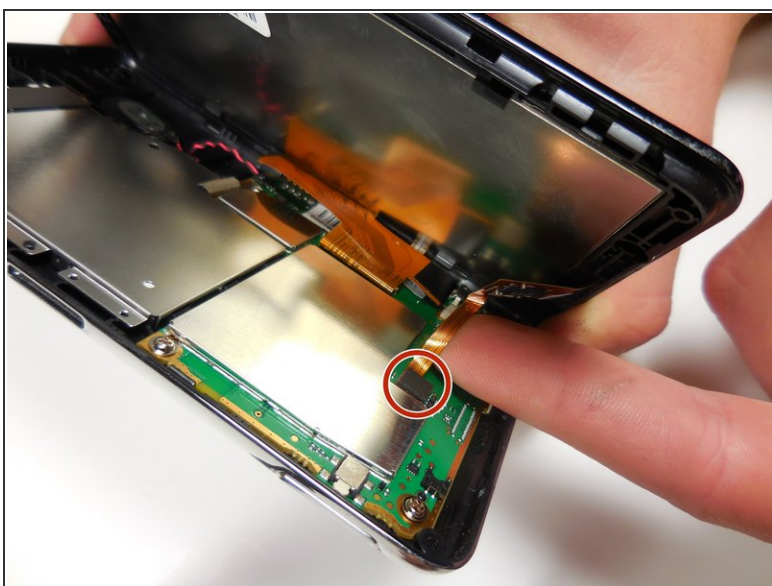
Step 8



- Using your fingers, pull up on the red and black wire from the back of the screen.

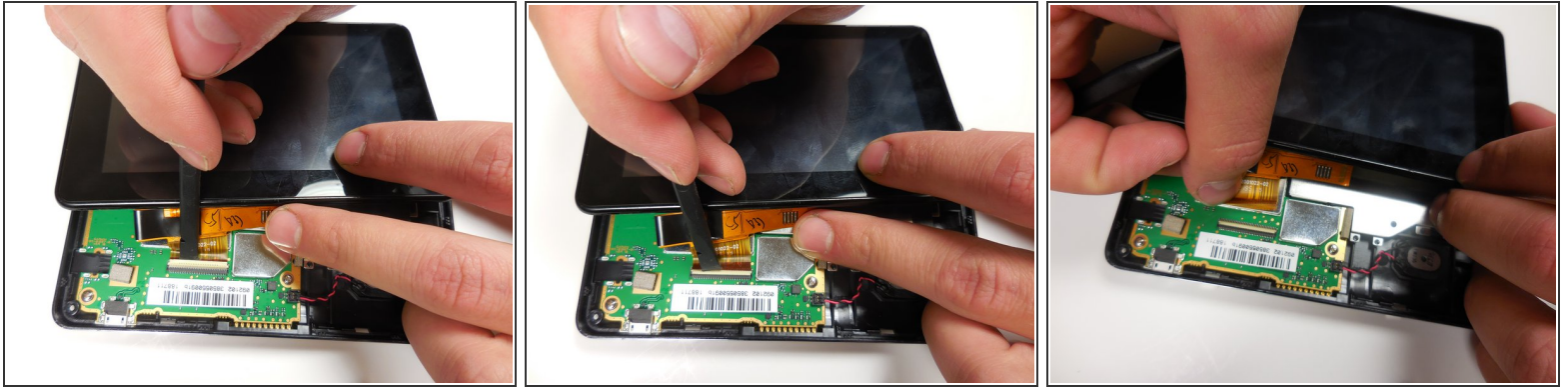
i This wire is part of the speaker, so be careful not to damage it.

Step 9



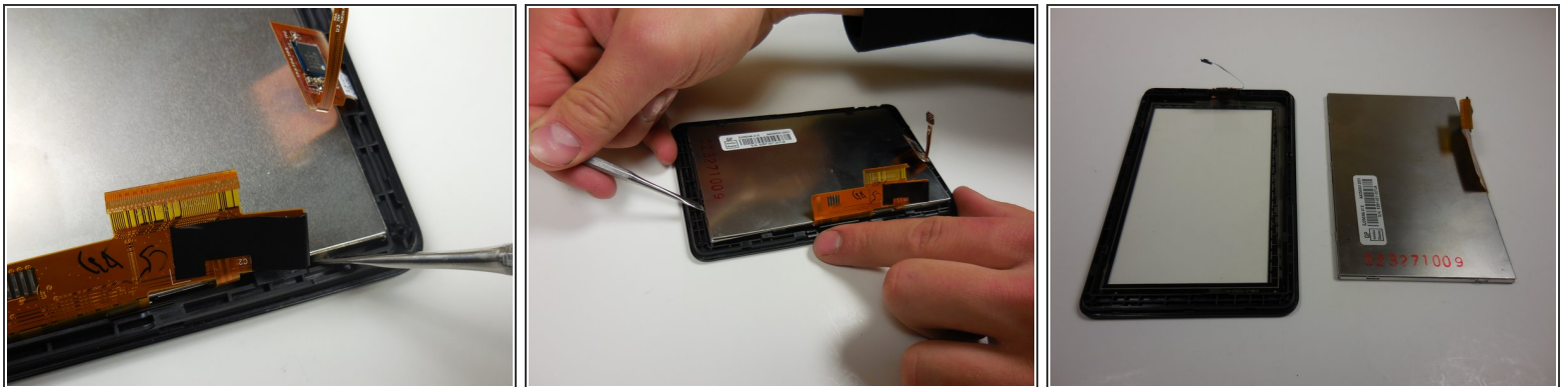
- Pull up on the smaller orange tab with your finger from the circuit board.

Step 10



- ❗ For the larger orange connection, there is a white tab holding the connection to the circuit board.
- Lift the white tab gently with the plastic spudger and remove the orange connection from the circuit board.

Step 11



- Use the metal spudger to leverage and lift the metal board from the glass paneling around the perimeter of the device.
- ❗ Be careful to not damage any connections.

To reassemble your device, follow these instructions in reverse order.