



Canon PowerShot G12 Rear Function Setting Dial Replacement

Replacing the rear function setting dial of the Canon G12.

Written By: Alexandra Millett



INTRODUCTION

Replacing the function dial is a highly-invasive, step-intensive process that becomes necessary if the function dial has sustained damage due to a crack or internal malfunction.

The function dial refers to the round mechanism on the lower back side of the camera identified by "Func. Set." In this guide, you will learn how to replace the function dial carefully without damaging any essential internal components.



TOOLS:

- [Phillips #00 Screwdriver](#) (1)
- [Spudger](#) (1)
- [Precision Tweezers Set](#) (1)



PARTS:

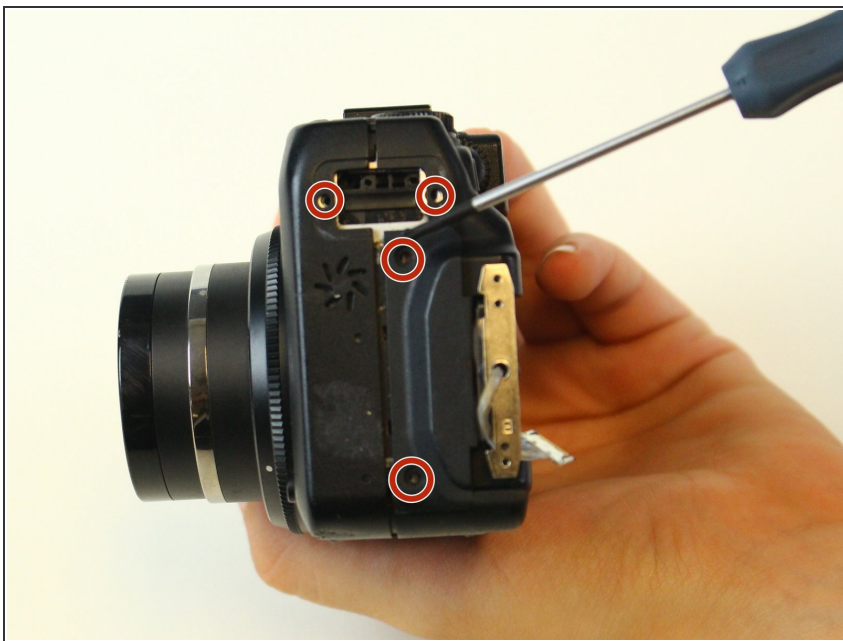
- [Canon PowerShot G12 Function Dial](#) (1)

Step 1 — Rear Function Setting Dial



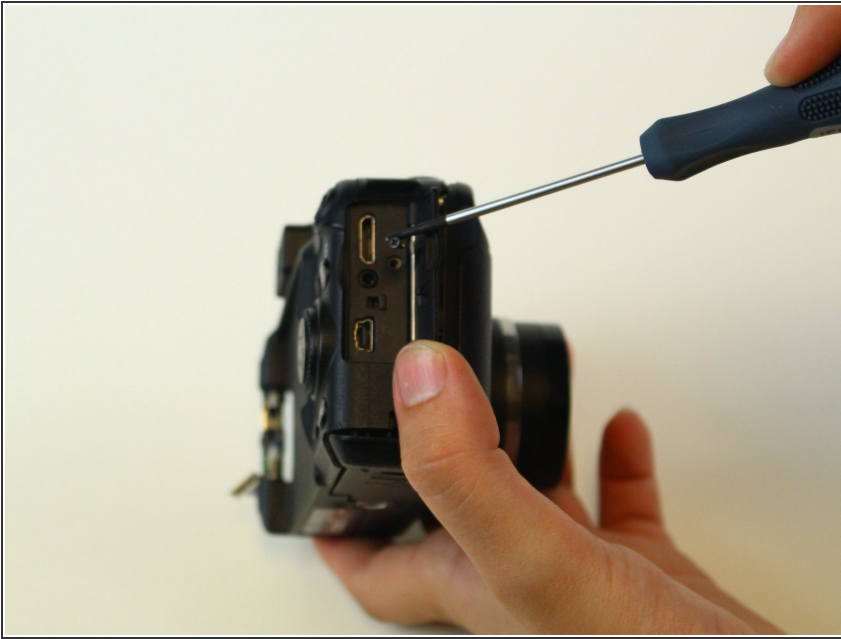
- Remove the three screws on the bottom of the camera using a Phillips-head 00 screwdriver.

Step 2



- Remove all of the screws on both the left and right side of the camera.

Step 3



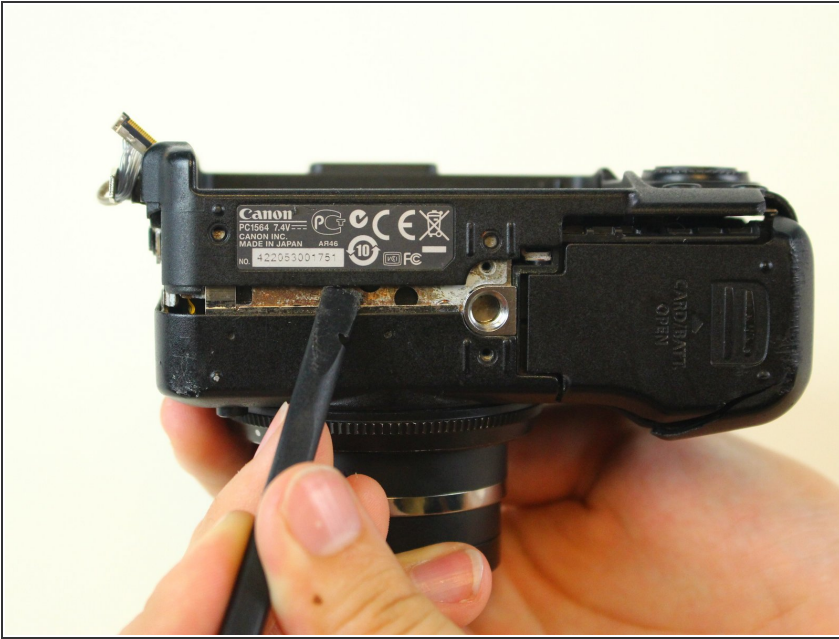
- Looking at the front side of the camera, there is a port on left side of the camera labeled HDMI.
- Remove the one screw on the side of the HDMI port.

Step 4



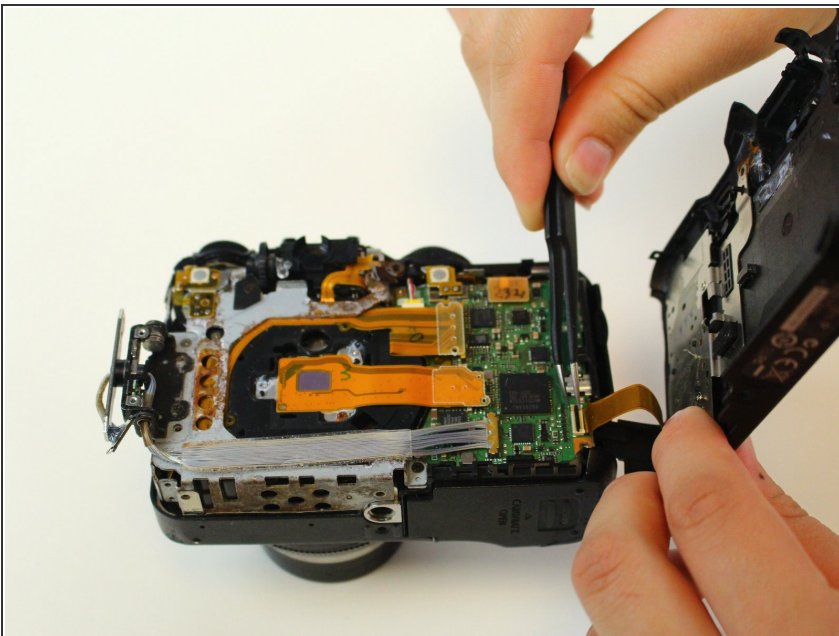
- Remove the screw on the right side of the view finder on the back side of the camera.

Step 5



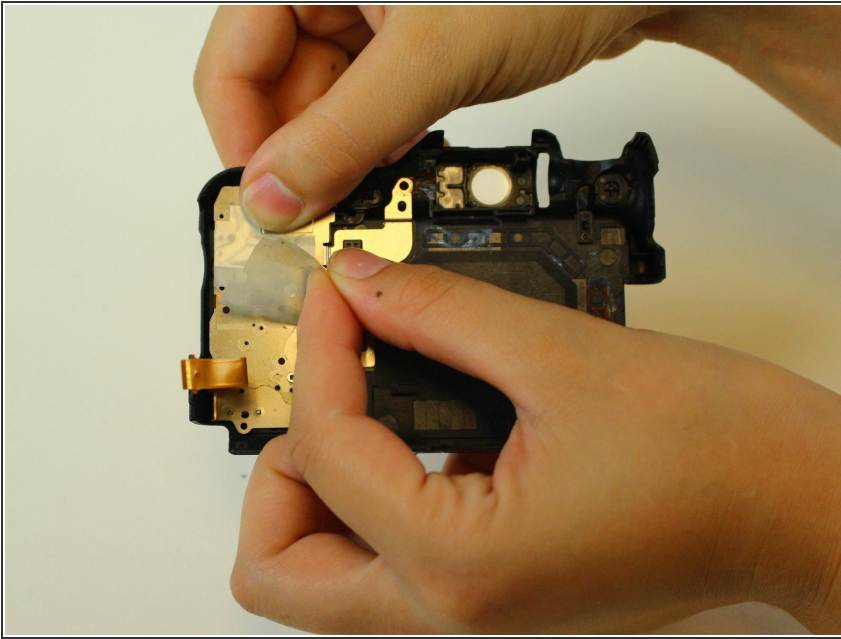
- Using a spudger, carefully pry open the back side of the camera starting directly under the camera's serial label.
- ⓘ Make sure all sides of the back case are loose before trying to force it off of the camera. It should be removed with relatively little effort.

Step 6



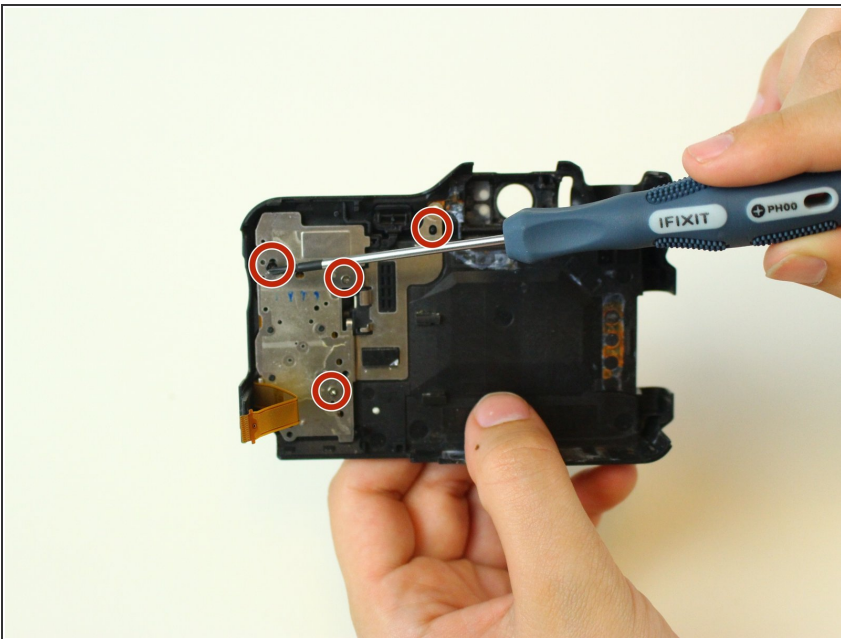
- ⚠ The back case is still attached to the camera with a yellow ribbon cable. The socket has a black flip-up lid that must be flipped up before the cable can be removed. Use precision tweezers to remove the cable.

Step 7



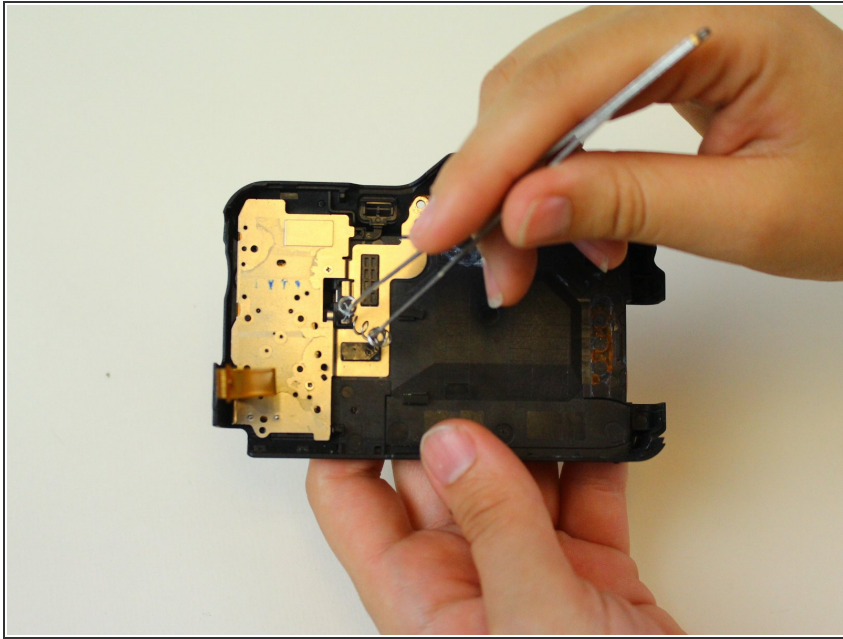
- Put the camera aside and look to the interior to the camera's back shell.
- Peel off the thick, plastic seal over the metal plate near the yellow ribbon cable.

Step 8



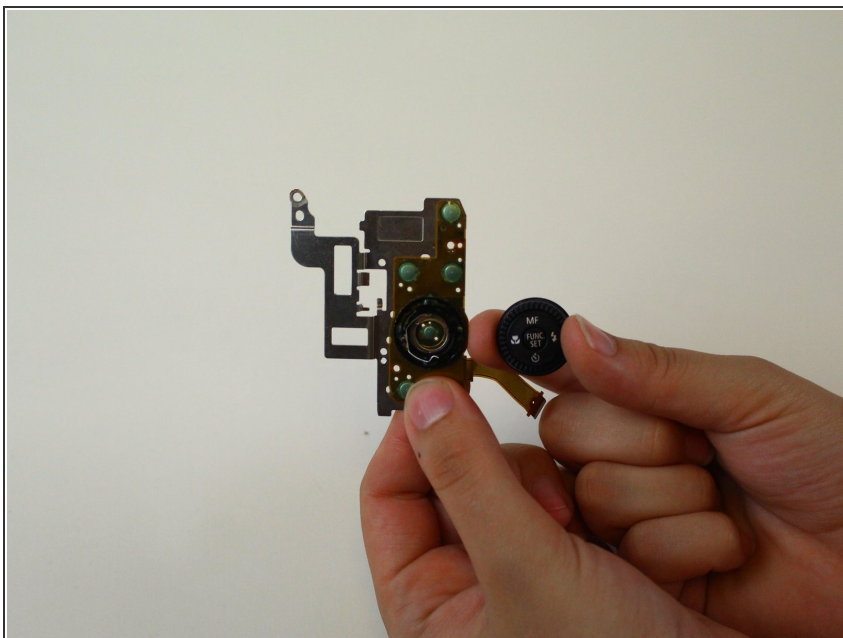
- Remove the four screws from the metal plate using a Phillips-head 00 screwdriver.

Step 9



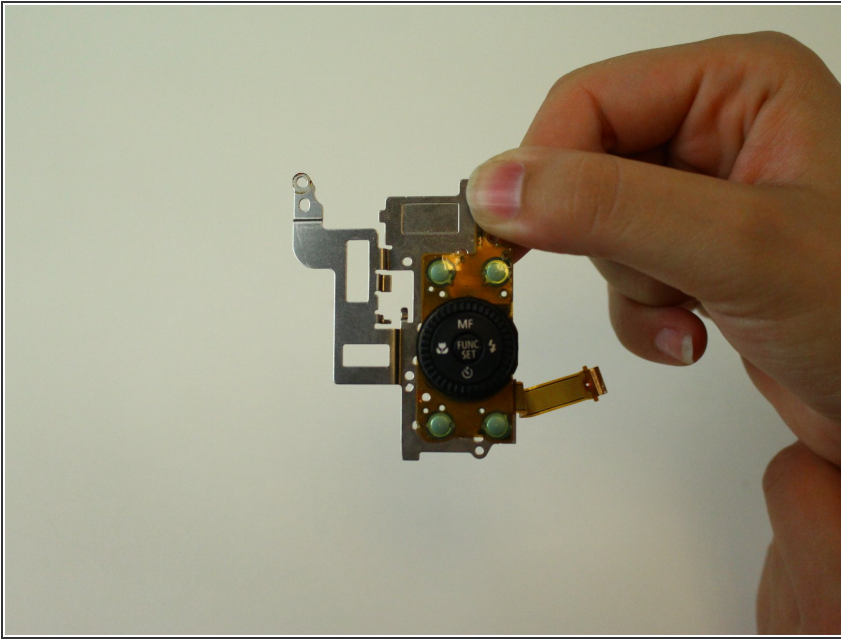
- Remove the spring from its socket using precision tweezers allowing the metal plate with the function dial to be removed.

Step 10



- Using precision tweezers, pry the old function dial out of its socket leaving only a black, metal ring attached.

Step 11



- Attach the new function dial simply by pressing it into the black, metal ring until you hear a click.

To reassemble your device, follow these instructions in reverse order.