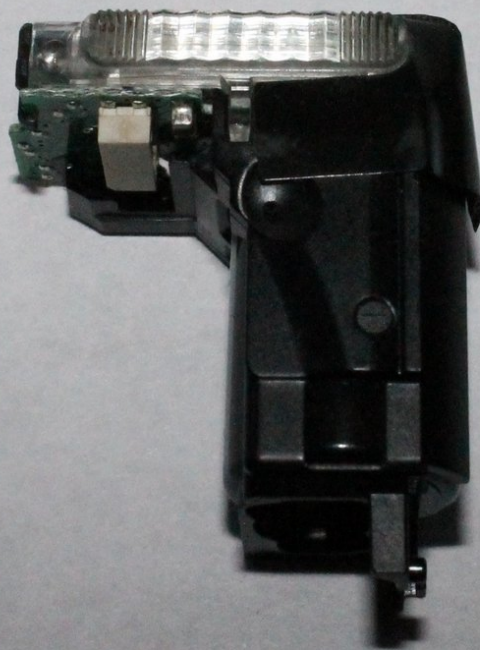




Canon PowerShot A2500 Flash Component Replacement

This guide will walk you through replacing the bulb responsible for the flash feature of the camera. Before diving into this repair make sure to see our troubleshooting guide on how to use the flash.

Written By: James Hickey



INTRODUCTION

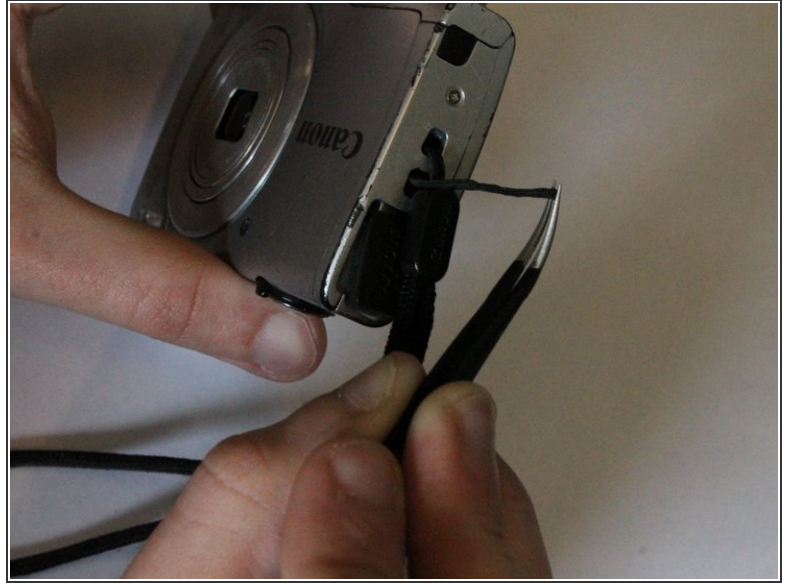
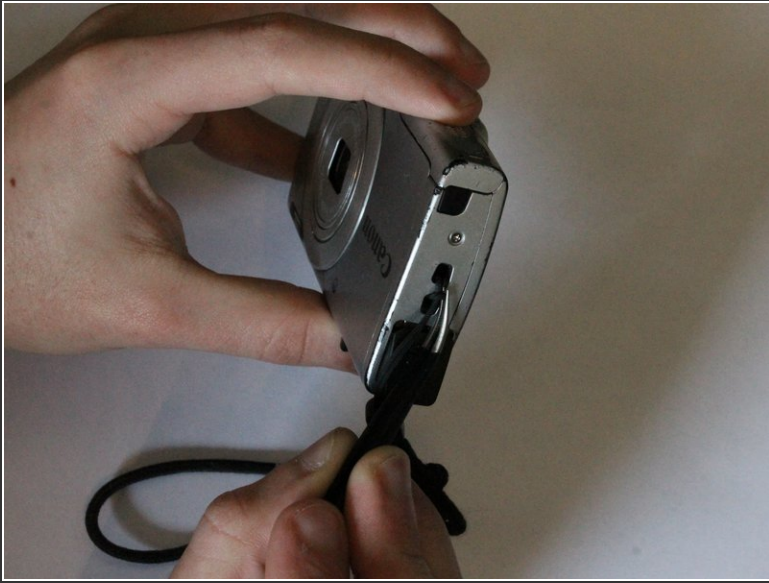
The flash component is critical to proper operation of the Canon PowerShot A2500. Using the flash feature it will assist in achieving proper lighting for dark photos. This will increase the ease of which photos can be taken.



TOOLS:

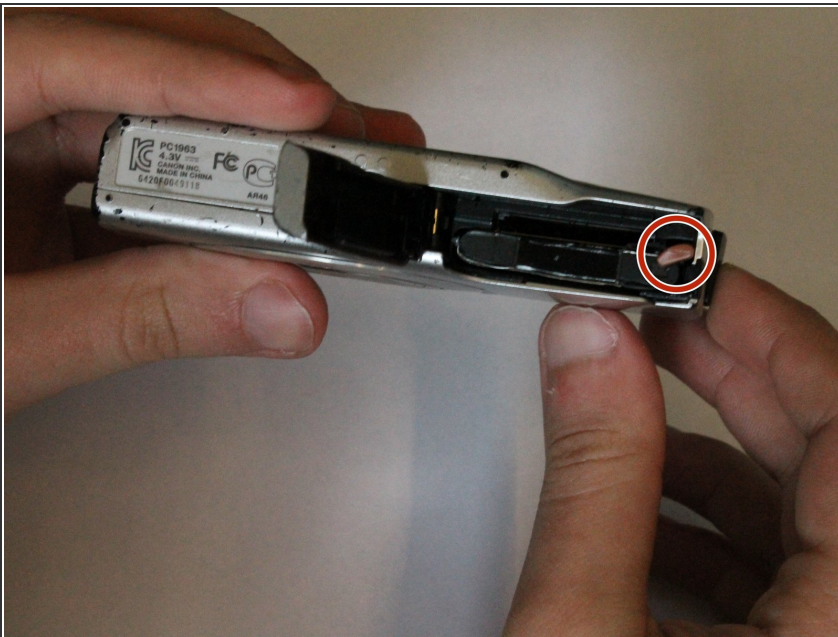
- [Tweezers](#) (1)
 - [Phillips #00 Screwdriver](#) (1)
 - [iFixit Opening Tools](#) (1)
-

Step 1 — Body Casing and Faceplate



- Remove the knot holding the wrist lanyard onto the camera

Step 2



- Open the latch at the bottom corner of the device to reveal the battery and SD card housing.
- There is an orange latch holding the battery in place which must be pushed back in order to free the battery.
- Once the battery is removed push the SD card and this will activate a spring ejecting the card from the camera.

Step 3



- Remove the 6 Phillips #00 exterior screws from the camera. Two are located on the bottom and two are located on either side as shown. Notice that one of the screws is under the AV Out Digital flap on the side. All exterior screws should be 2.4mm in length

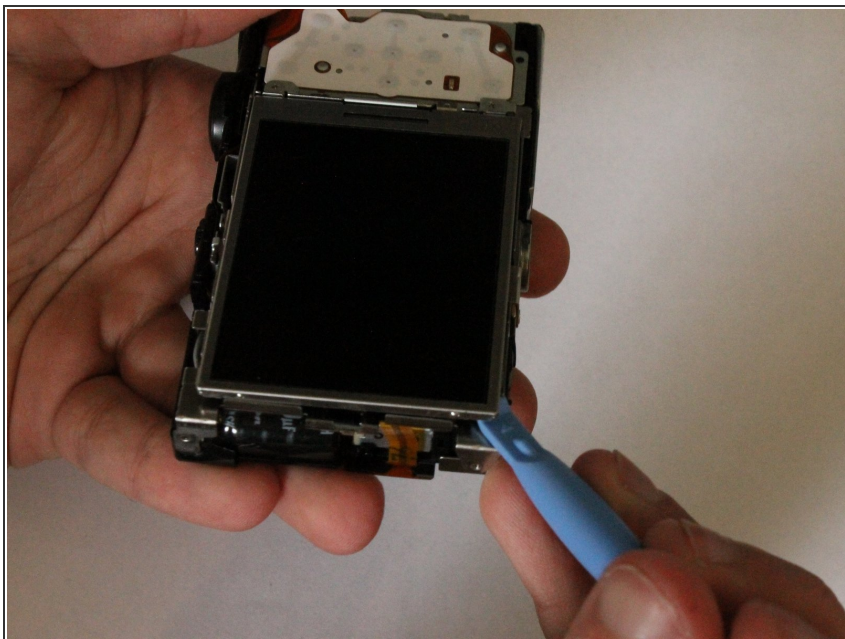
Step 4



- Pry apart the camera casing using the plastic opening tool tool provided. Once the casing has begun to separate pull the two sides apart with your hands.

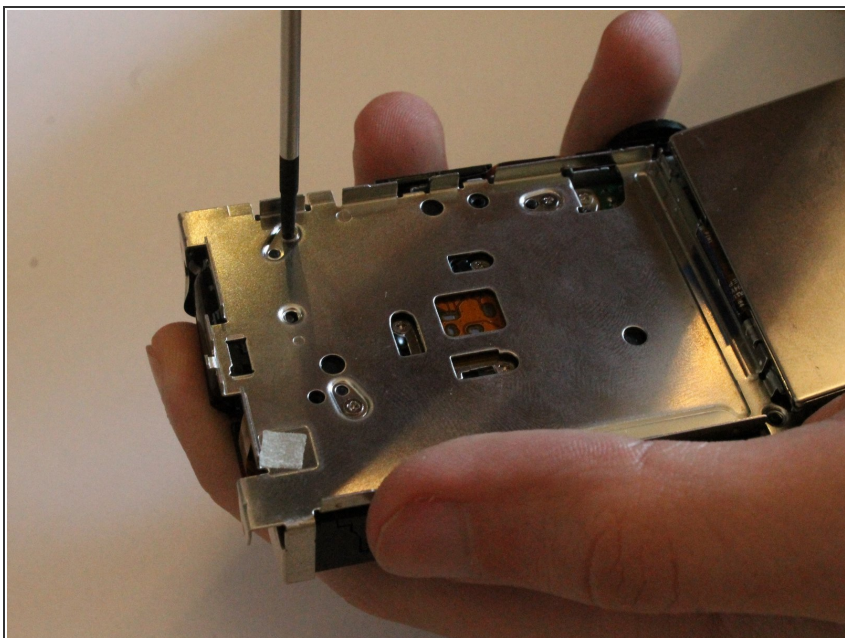
⚠ Be careful not to bend the plastic casing to much, as it will crack.

Step 5 — Flash Component



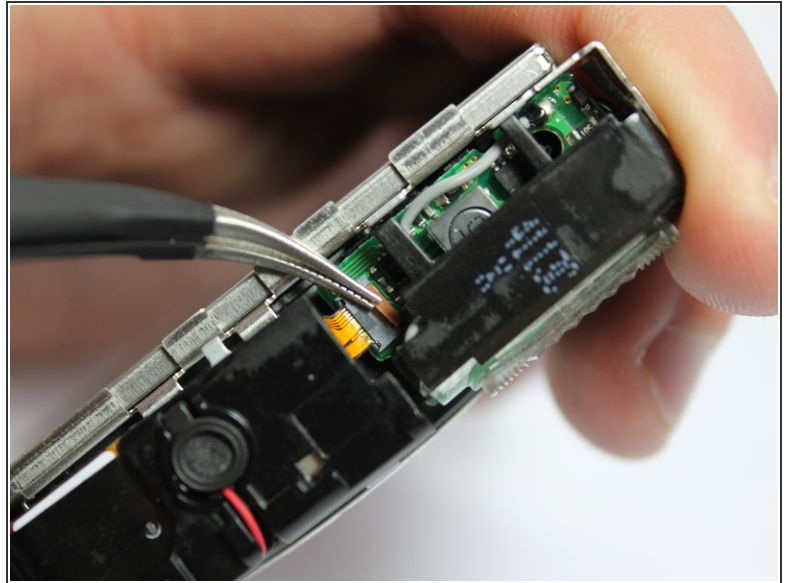
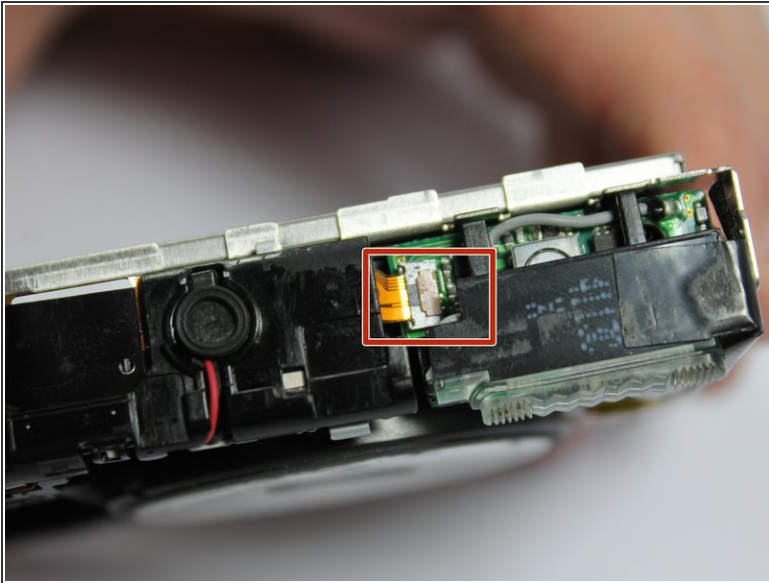
- Lift LCD Display using the plastic opening tool to access the screws.

Step 6



- Remove top left phillips #00 screw under LCD display
- The screw should be 3.6mm long and the face of the screw should have a 2.4mm diameter

Step 7



- Once the screw is removed lift small brown tab and carefully remove the ribbon tape connecting the flash component to the camera
 - Now the flash component is completely separated from the computer and ready to be replaced or repaired
- ⚠ Be sure to have the battery removed before disconnecting this tab. This will ensure that there is no possible charge remaining in the capacitor.

To reassemble your device, follow these instructions in reverse order.