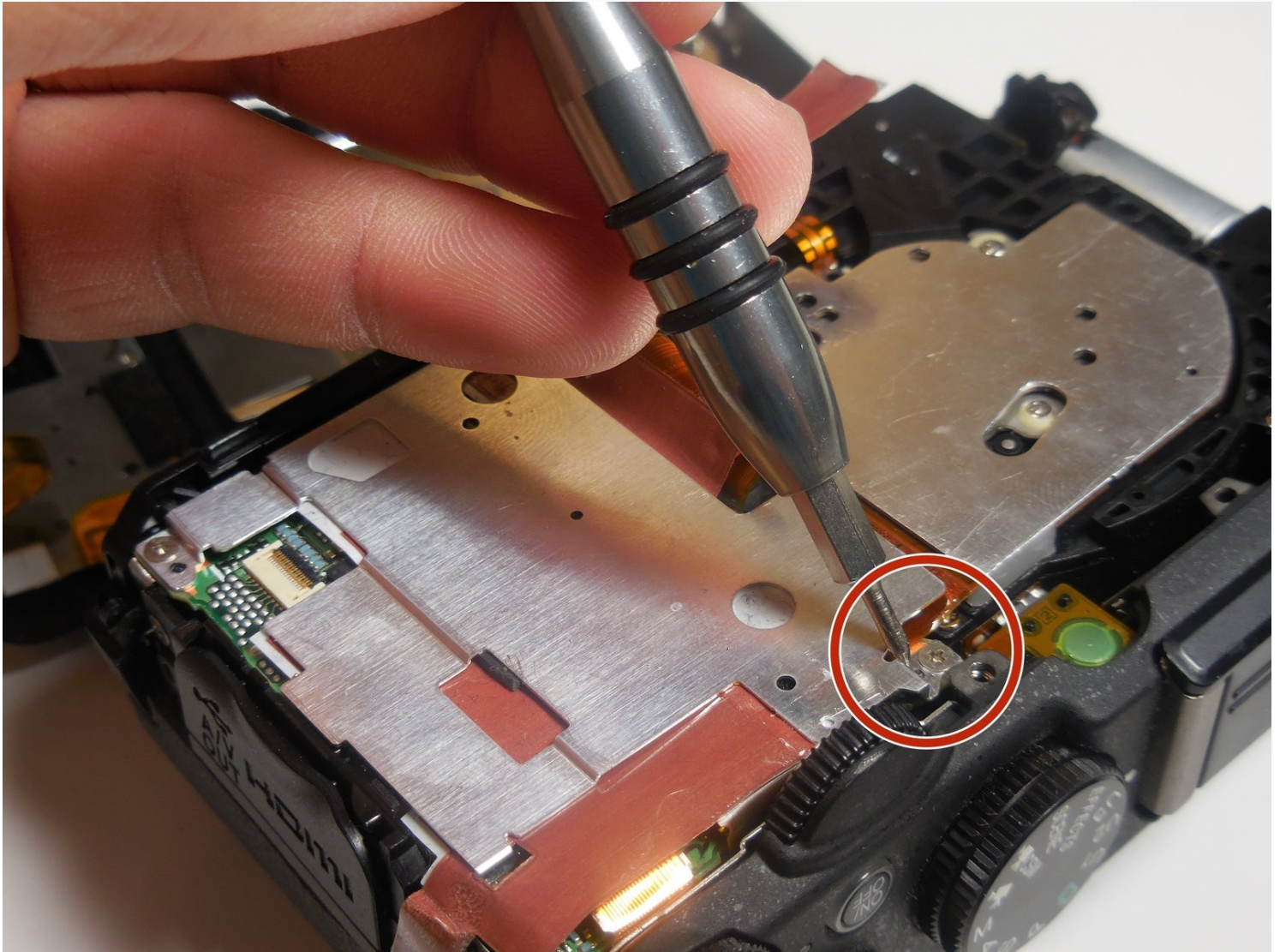




# Nikon COOLPIX P7700 Focusing Screen Replacement

This guide showcases how to replace the...

Written By: Dustin Wahl



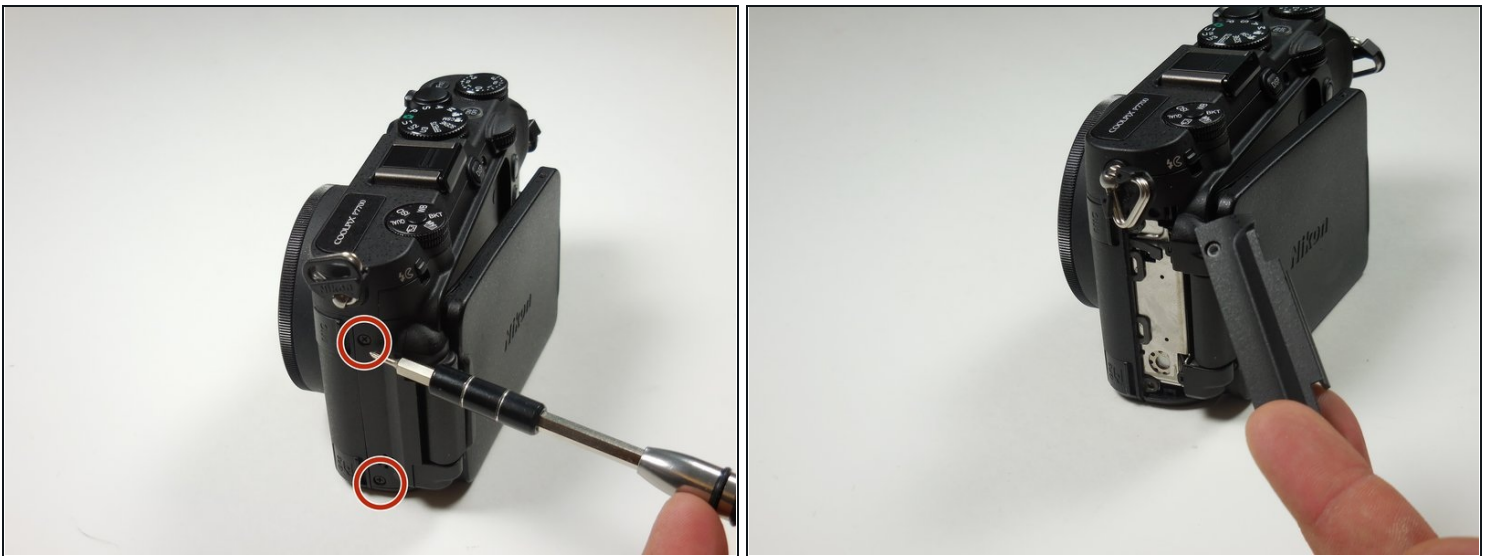
# INTRODUCTION

This guide showcases how to replace the focusing screen on the Nikon COOLPIX p7700 camera. Follow these 18 steps to ensure proper replacement of the camera's focusing lens.

## TOOLS:

Phillips #00 Screwdriver (1)

### Step 1 — Back Casing



- Turn camera to the left side and remove the two 4.3 mm black side screws using the Phillips #00 screwdriver.
- Remove the side panel.

## Step 2



- Open the touch screen, and remove the three 4.3 mm black screws inside using the Phillips #00 screwdriver.

## Step 3



- Remove the 4.3 mm black screw on top of the camera, right above where the screen folds out. Use the Phillips #00 screwdriver.



## Step 4



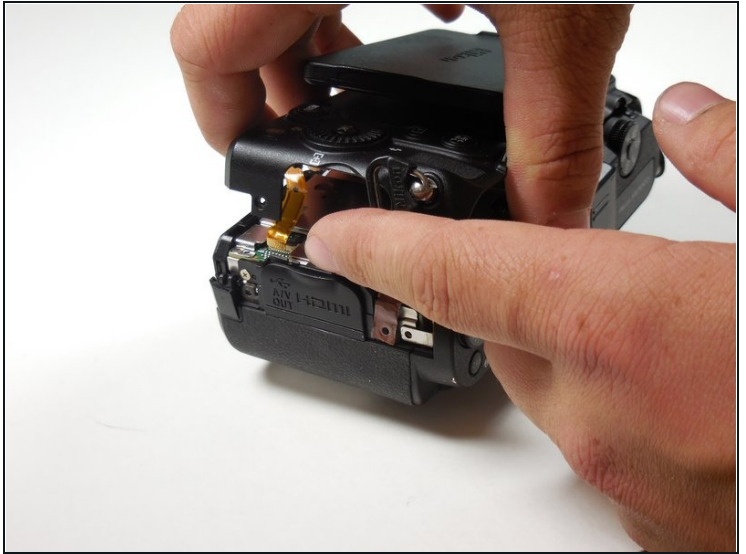
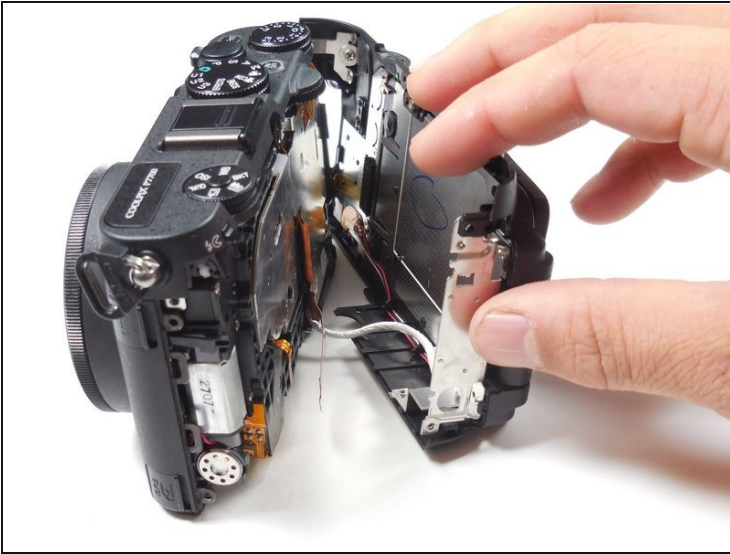
- Remove the two 4.3 mm black screws on the right side of the camera using the Phillips #00 screwdriver.

## Step 5



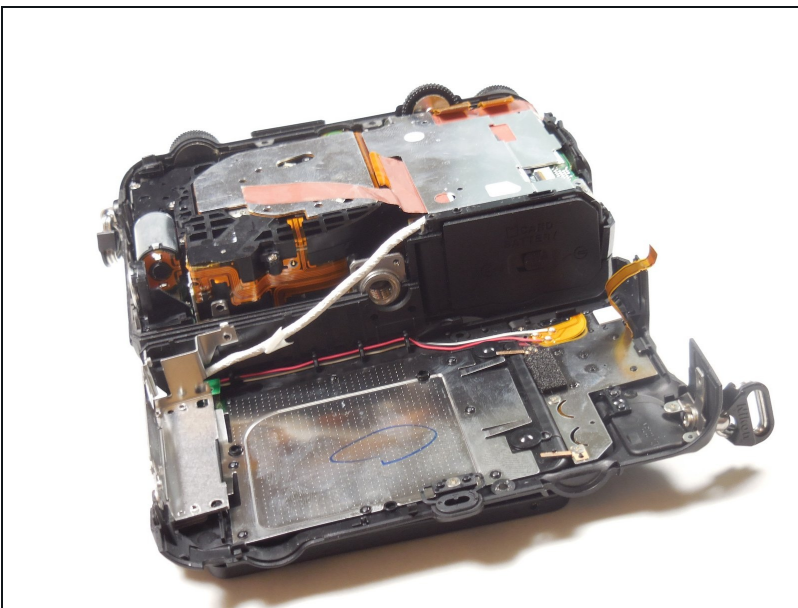
- Remove the 4.3 mm black screws on the bottom of the camera using the Phillips #00 screwdriver.

## Step 6



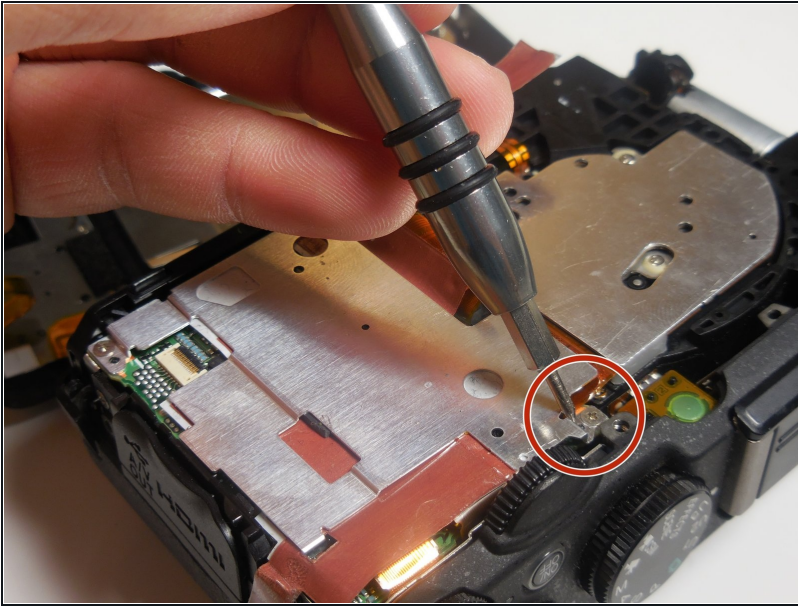
- Begin separating the camera into two parts.
- ① It is okay to remove the orange ribbon. This will be easily put back into place when re-assembling.

## Step 7



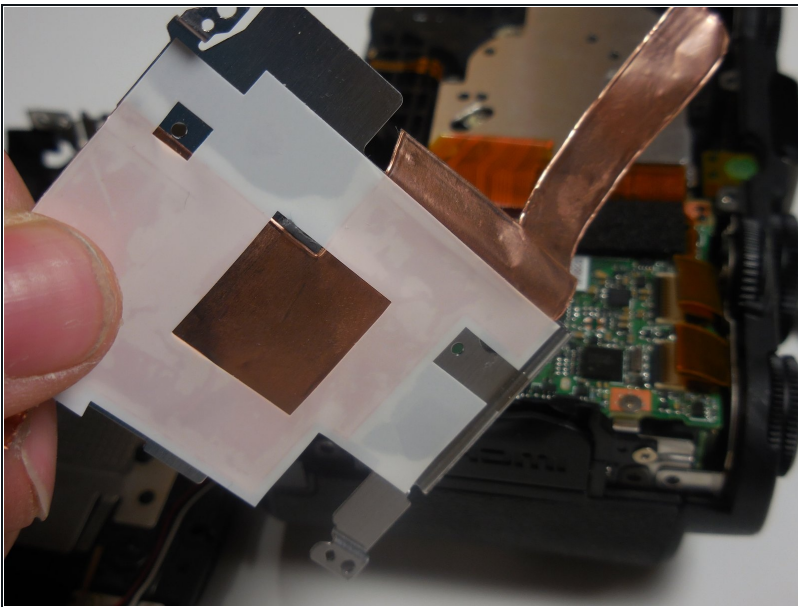
- Remove the back casing.

## Step 8 — Focusing Screen



- Once the back casing is off, locate the 4.3 mm silver screw near the top of the camera and remove it using the Phillips #00 screwdriver.

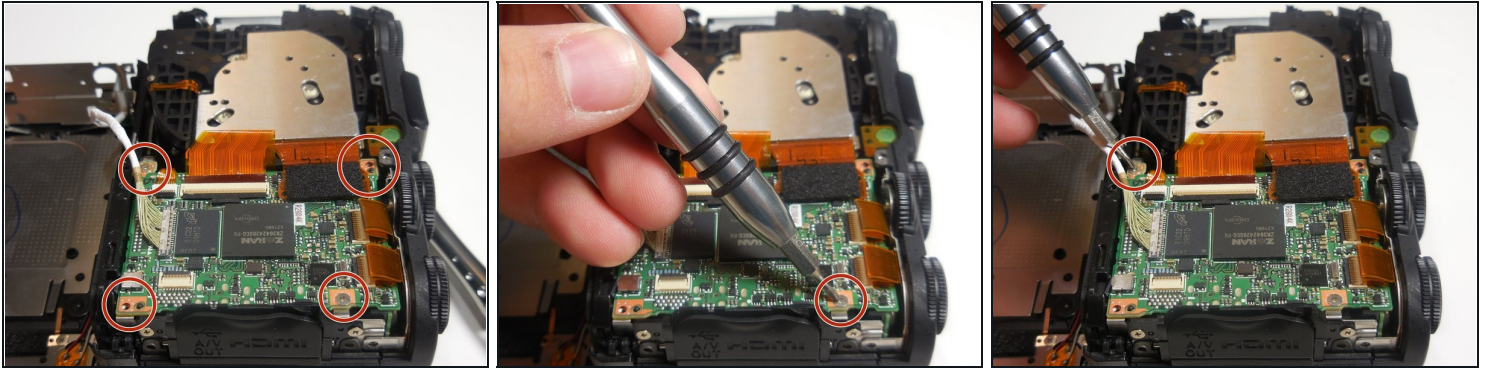
## Step 9



- Remove the metal sheet from the camera.
- ① *It is okay to remove the orange ribbon from the camera.*

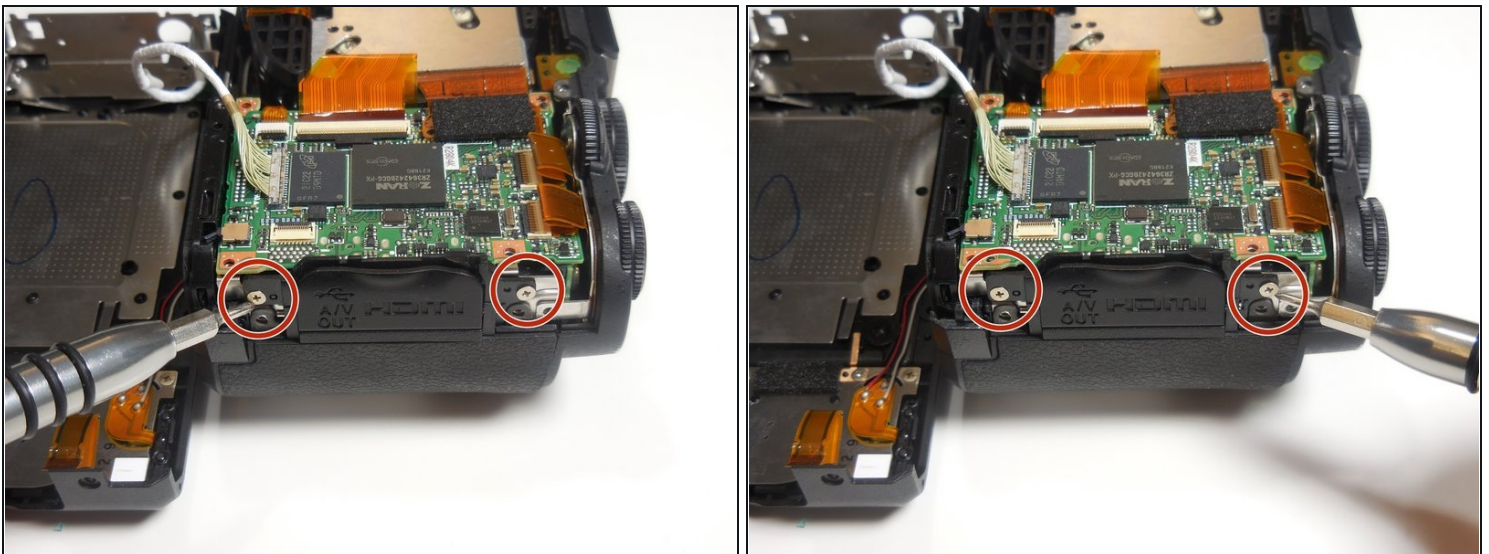


## Step 10



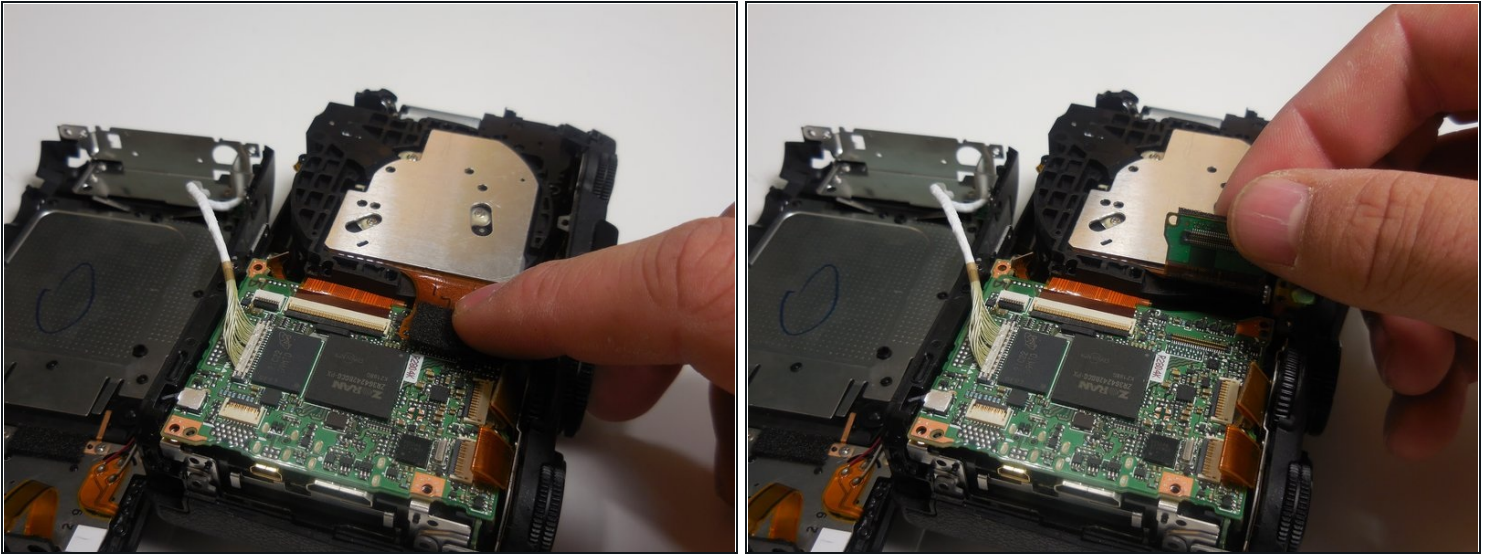
- Remove the four 4.3 mm silver screws located on the ends of the chip using the Phillips #00 screwdriver.

## Step 11



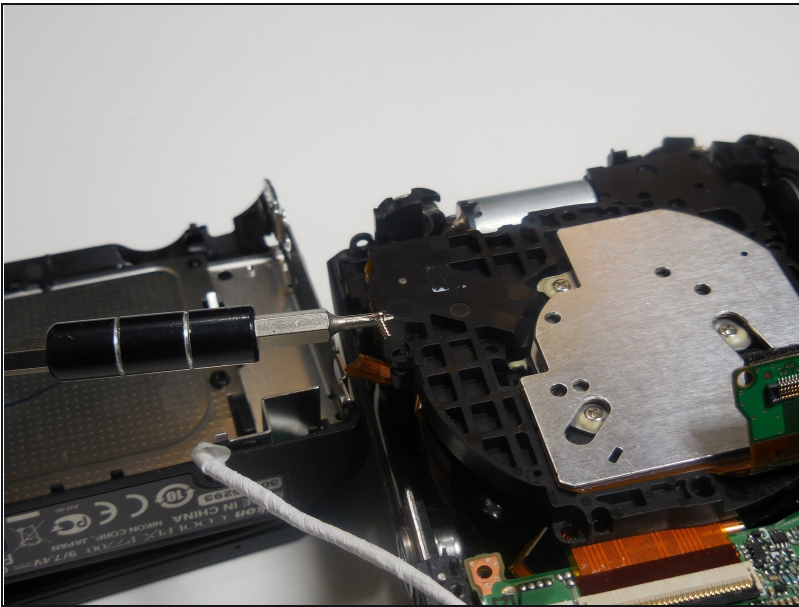
- Remove the two 4.3 mm silver screws on the far right side of the camera using the Phillips #00 screwdriver.

## Step 12



- Lift and detach connector from board as shown.

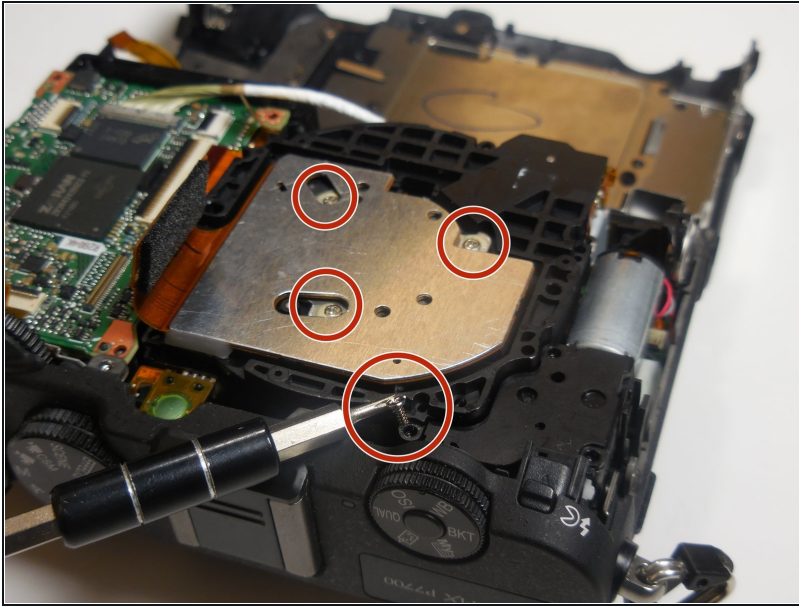
## Step 13



- Remove the board from the camera to locate lens opening

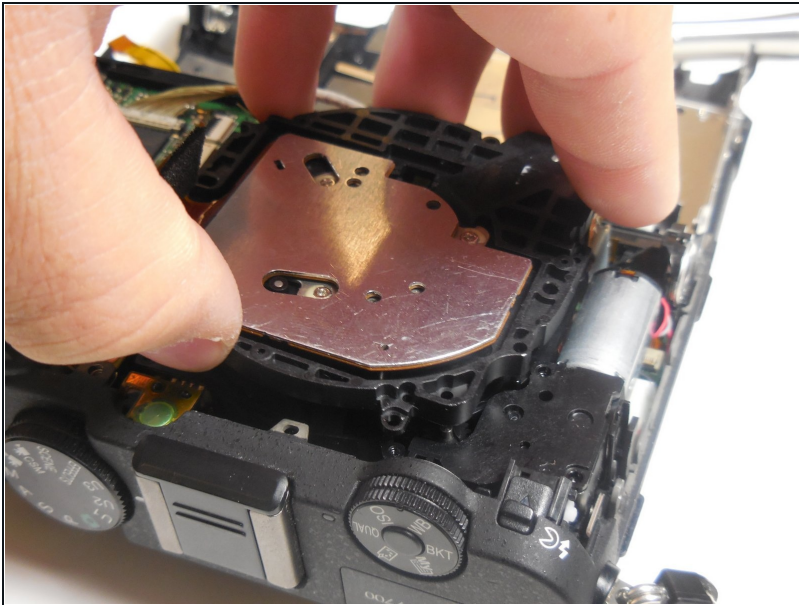


## Step 14



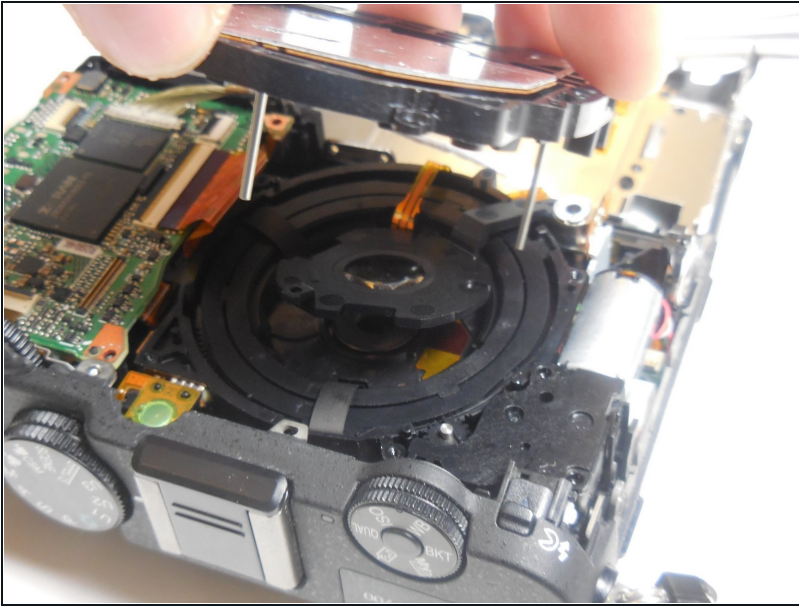
- Remove the 4.3 mm screws from the metal sheet using the Phillips #00 screwdriver.

## Step 15



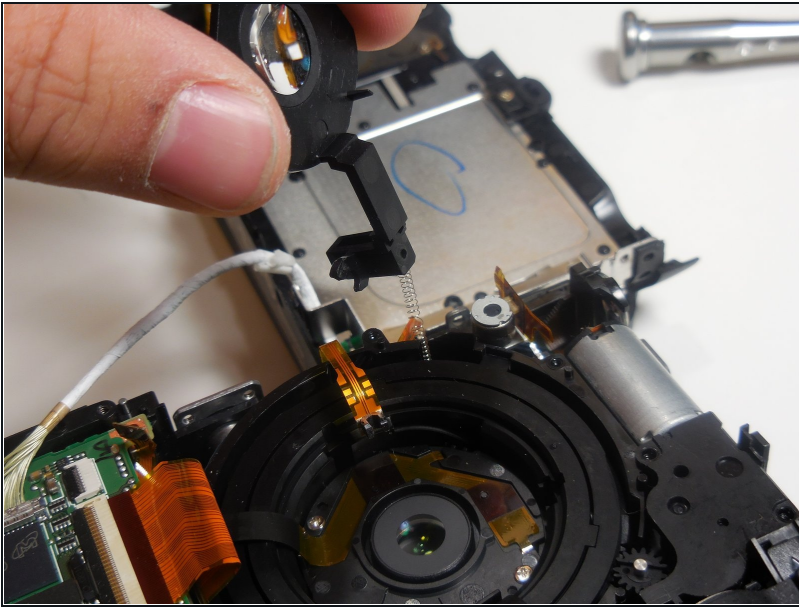
- Lift the metal sheet up and out of the camera.

## Step 16



- Locate the reflective lens.

## Step 17



- Remove the lens from the camera.

---

To reassemble your device, follow these instructions in reverse order.