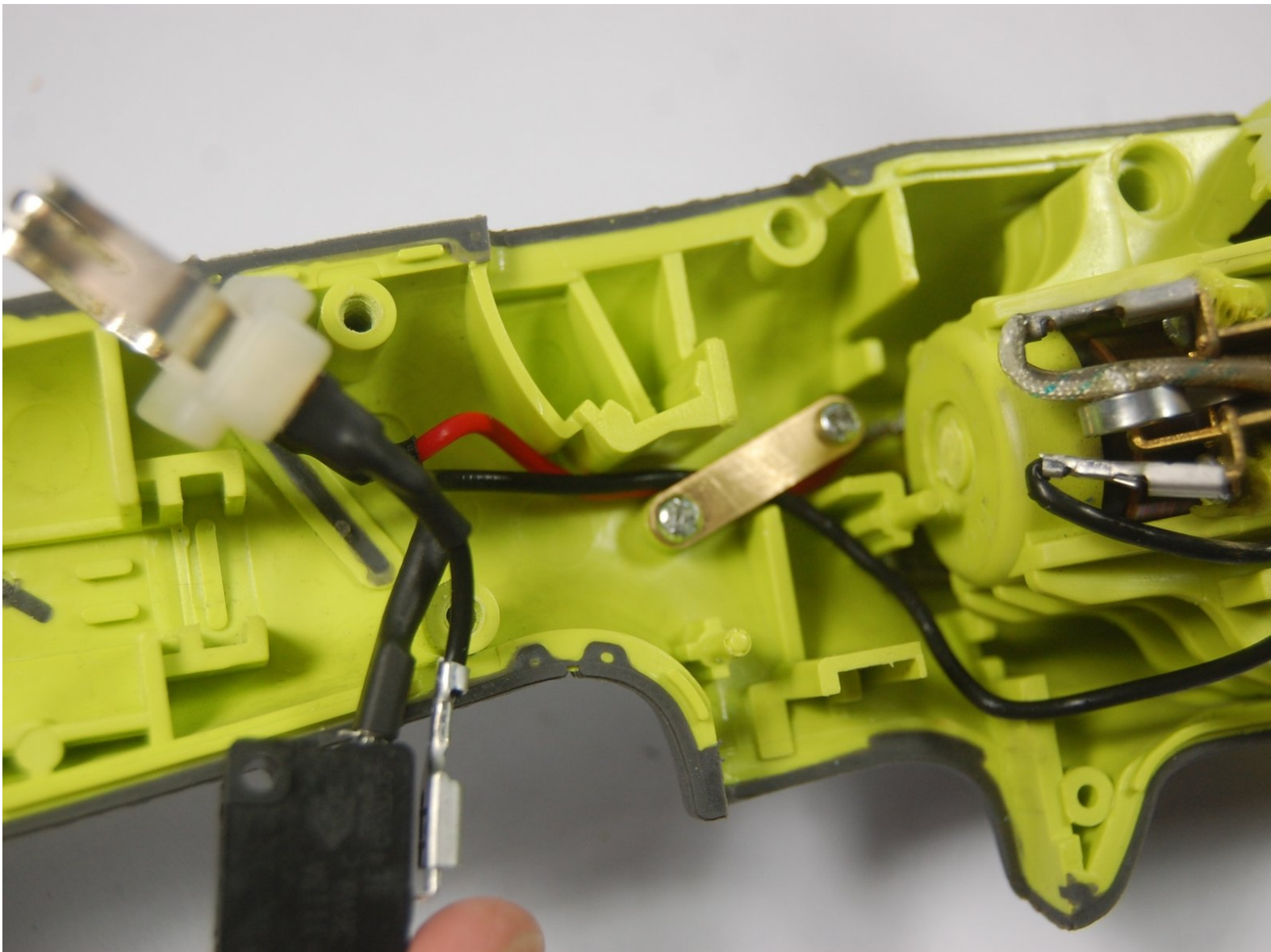




# RYOBI P422 Body Replacement

This guide will walk you through the steps on how to replace the body of the Ryobi P422 grinder.

Written By: John Lamanuzzi





## TOOLS:

- [T20 Torx Screwdriver](#) (1)
  - [Tweezers](#) (1)
-

## Step 1 — Battery and Handle



- To remove the battery press down on the two buttons located on each side of the battery and pull away from the body of the grinder.
- To remove the handle hold grinder with one hand and use the other hand to unscrew the handle with a counter-clockwise motion

## Step 2 — Body



- Lay the grinder flat on its side so the screws are facing up.

### Step 3



- Remove the four 1.8 cm screws from the lower and mid section of the body with the Torx T20 screwdriver.
- Remove the 3.7 cm screws from the upper section of the body, with the same screwdriver.

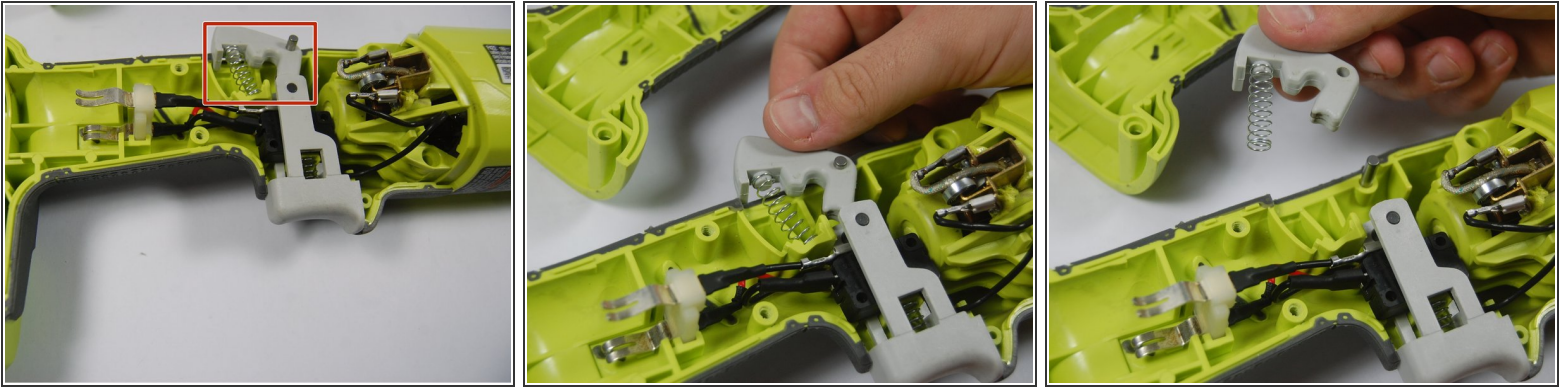
### Step 4



- Now that the two halves are unscrewed, lift up the top half.

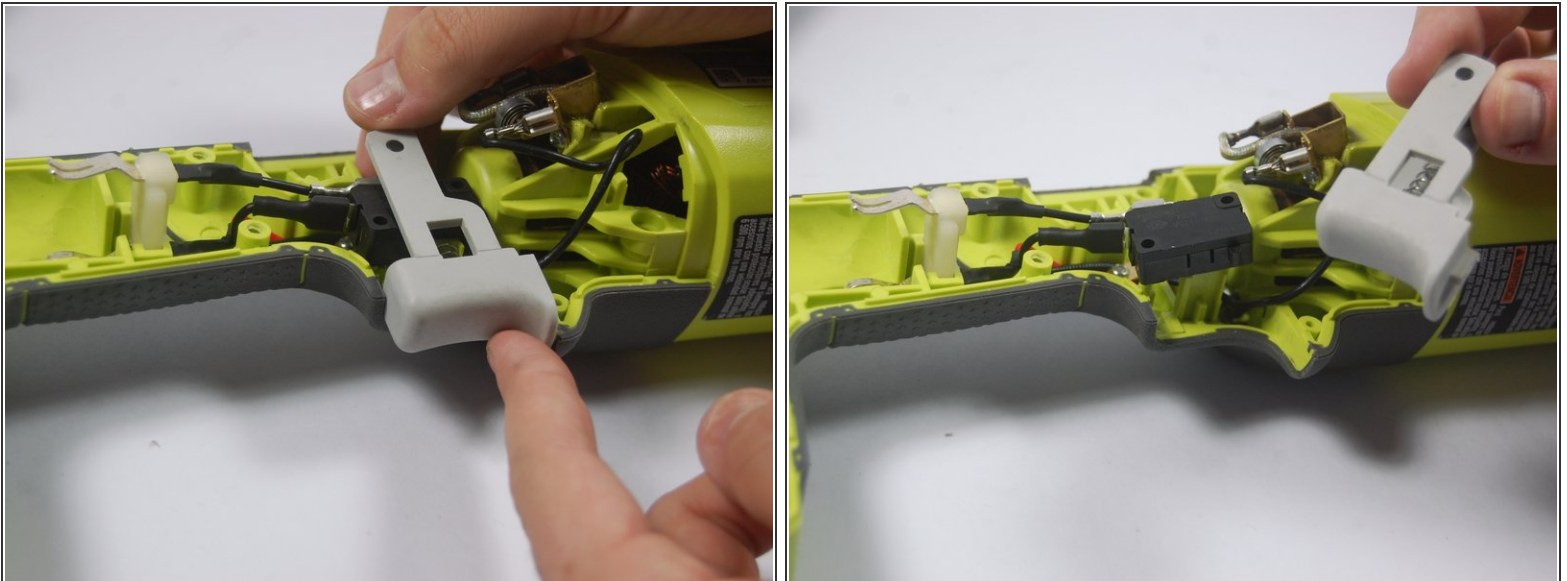


## Step 5



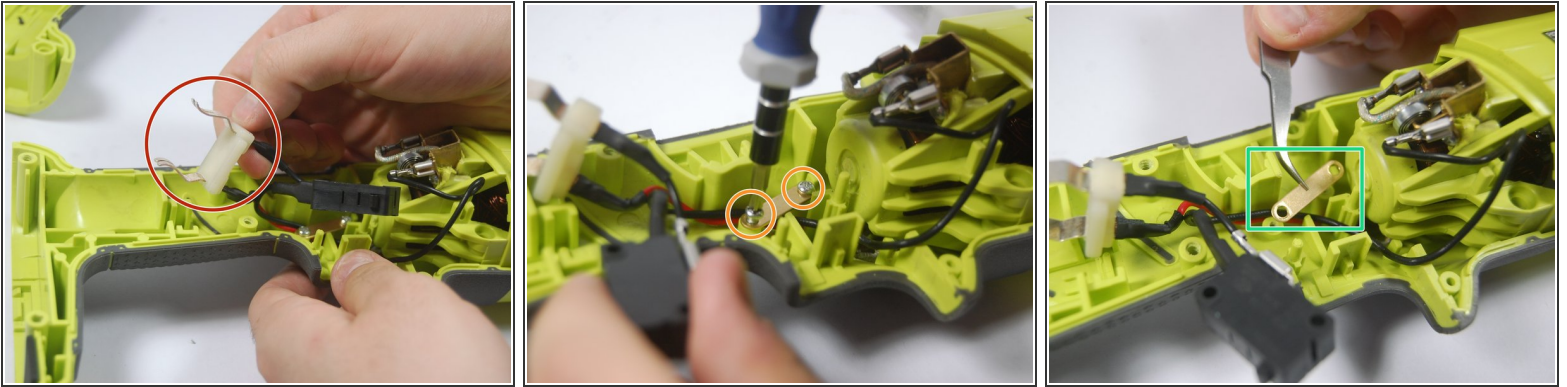
- Remove the safety trigger and the spring.
- ⓘ Be careful in removing the safety trigger, the pin may fall out as you are moving it.

## Step 6



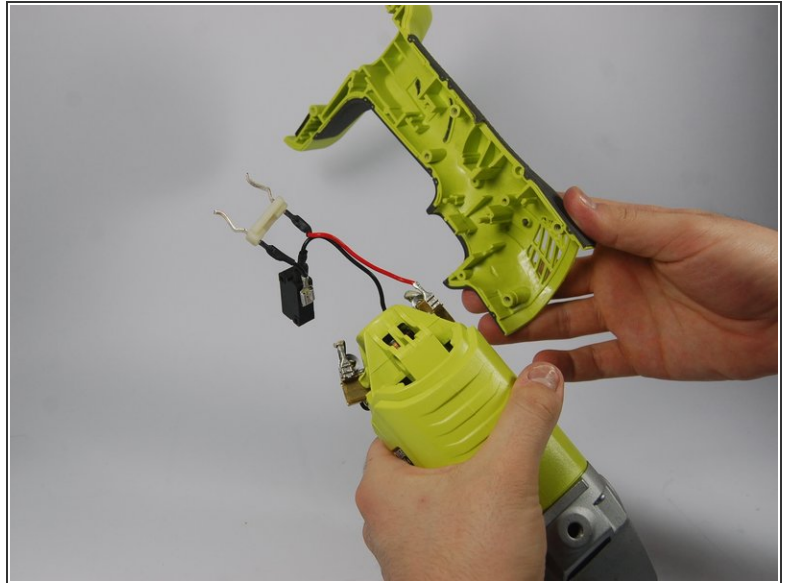
- Lift up main trigger and spring together.
- By lifting this trigger and spring out of the handle, you will pull double duty by lifting the black switch box off of its two support posts.
- Slide the trigger off of the black switch box.
- ⓘ Be careful when removing trigger, the spring will be compressed and may move unexpectedly.

## Step 7



- Lift the battery lead bracket from its slot.
  - Use the PH 1 screwdriver to unscrew the two 0.7 cm screws that hold the 2.6 cm long brass bracket in place.
  - Use tweezers to remove the brass bracket.
- i** During reassembly, remember to keep the spring inside the main trigger and against the bracket that is visible in the second of the accompanying photos.

## Step 8



- Flip the grinder over and lift off the second half of the body.
- Now you can replace your damaged handles with a new pair.

To reassemble your device, follow these instructions in reverse order.