



# RYOBI P422 Wheel Guard Replacement

This guide will walk you through the steps on how to replace the wheel guard on the grinder.

Written By: John Lamanuzzi



## Step 1 — Battery and Handle



- To remove the battery press down on the two buttons located on each side of the battery and pull away from the body of the grinder.
- To remove the handle hold grinder with one hand and use the other hand to unscrew the handle with a counter-clockwise motion

## Step 2 — Wheel Guard



**⚠ Do not perform this task immediately after using the grinder for grinding/cutting.** The blade will be too hot to touch and could result in injury.

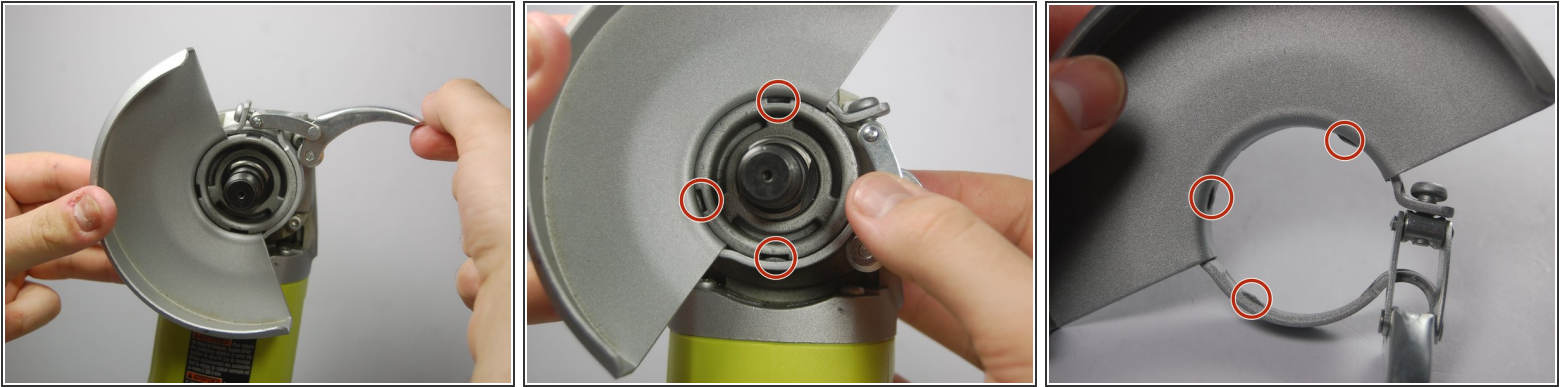
- Fully press the spindle lock button.
- With the spindle lock button held down, use the wrench provided to loosen the clamp nut. Once loose, you can use your fingers to unscrew the nut completely

### Step 3



- Remove your grinding/cutting tool by simply pulling it off the spindle.
- Next remove the disc flange (a.k.a spacer) by pulling it off of the back end of the spindle.
- ⓘ The disc flange has two small raised edges on its back side. These ridges need to be aligned with the two flat faces at the back of the spindle lock when reassembled. This will ensure a safe, snug fit for your grinding blades.

## Step 4



- Lift the clasp on the grinder guard. Make sure the clasp is completely loosened before proceeding.
- Rotate the grinder guard so that the three notches on its interior align with the three slots on the grinding head assembly.
- Once aligned, simply pull the guard off.

To reassemble your device, follow these instructions in reverse order.