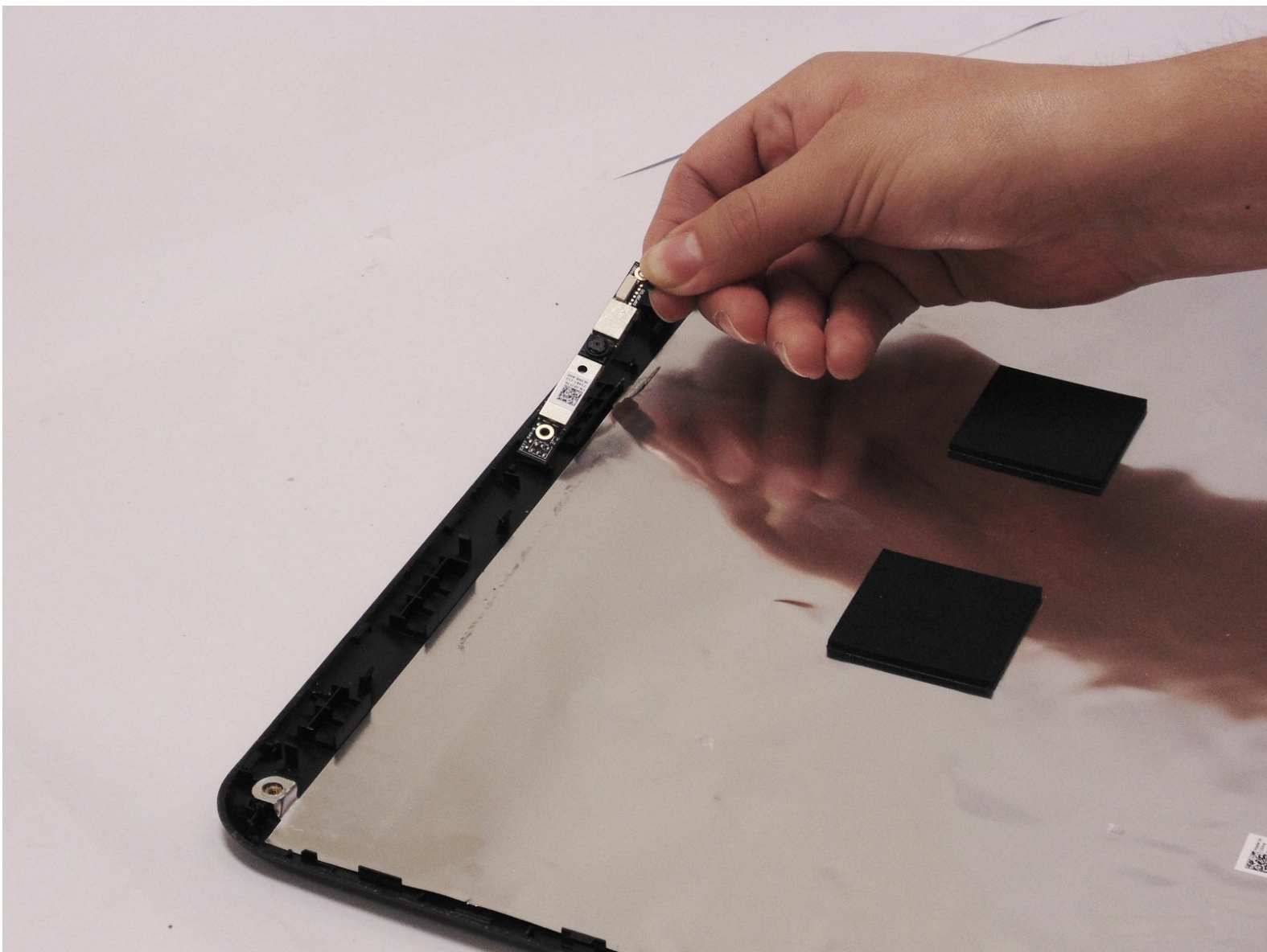




Dell Inspiron 15R Webcam Replacement

If you have tried everything and your webcam still does not turn on, this guide will show you how to replace it.

Written By: Trixie Gonzalez



INTRODUCTION

This guide will demonstrate how to remove an old webcam and replace it.



TOOLS:

- [Phillips #0 Screwdriver](#) (1)
 - [Spudger](#) (1)
-

Step 1 — Battery



- Turn the device over and locate the battery.

Step 2



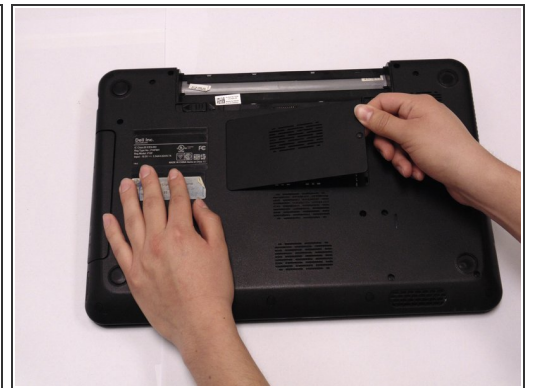
- Place thumbs on each latch and push outwards.

Step 3



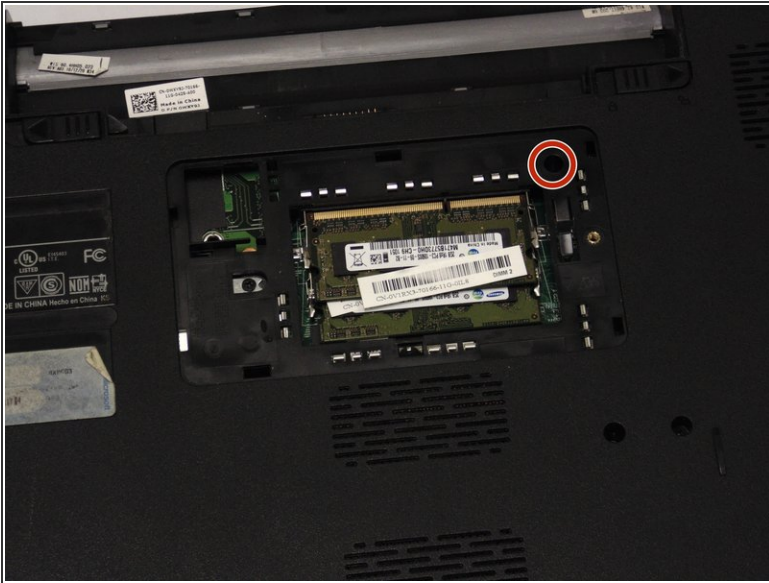
- Push and slide the battery away from you.

Step 4 — Keyboard



- Locate the RAM compartment and the screw on the right hand side. Remove the cover.

Step 5



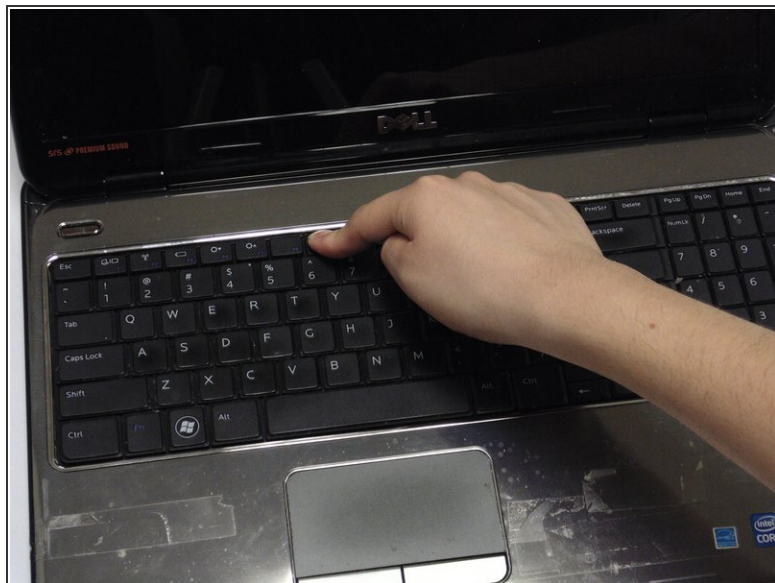
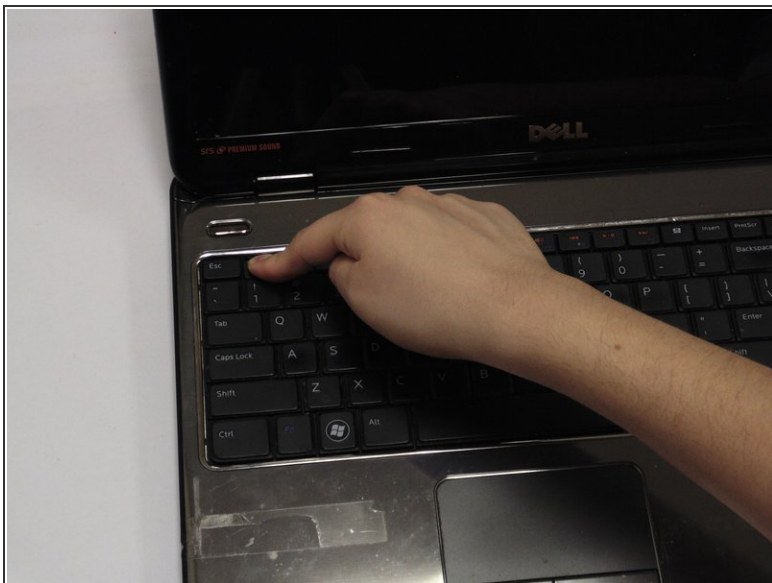
- Locate and remove the 2.5 mm x 5 mm screw on the upper right hand side of the compartment.

Step 6



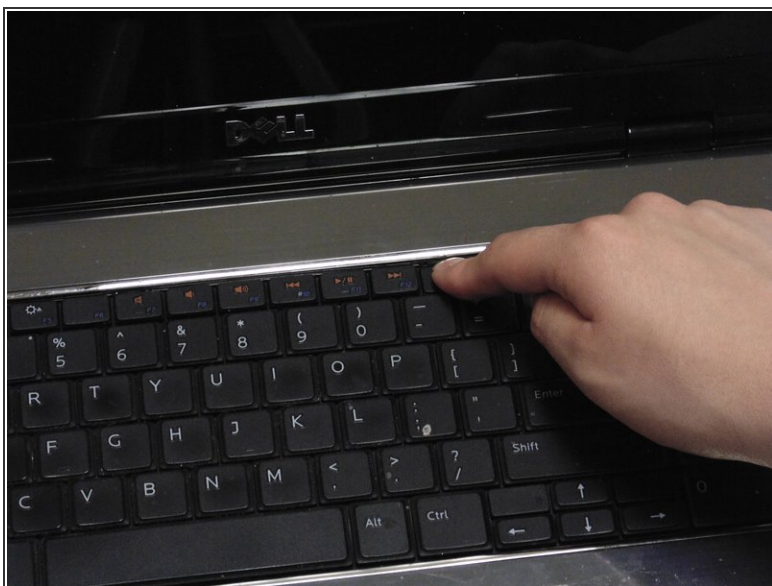
- Turn the device around and open it up.

Step 7



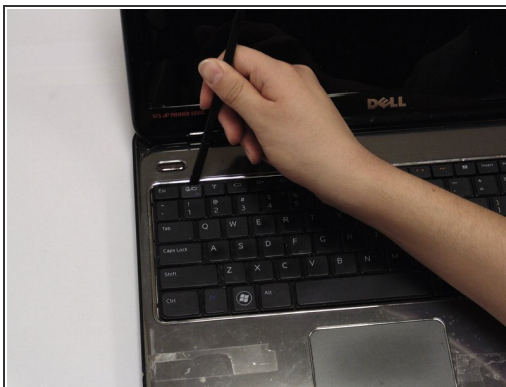
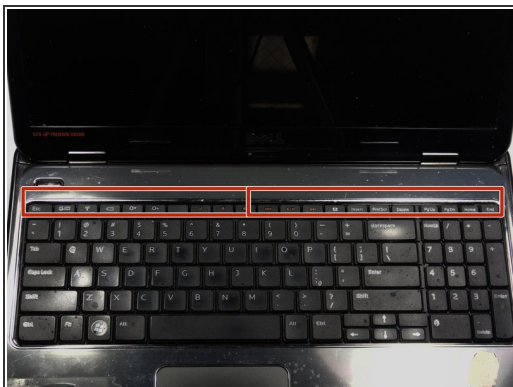
- Using your index finger, push down on the F1 and F7 keys.

Step 8



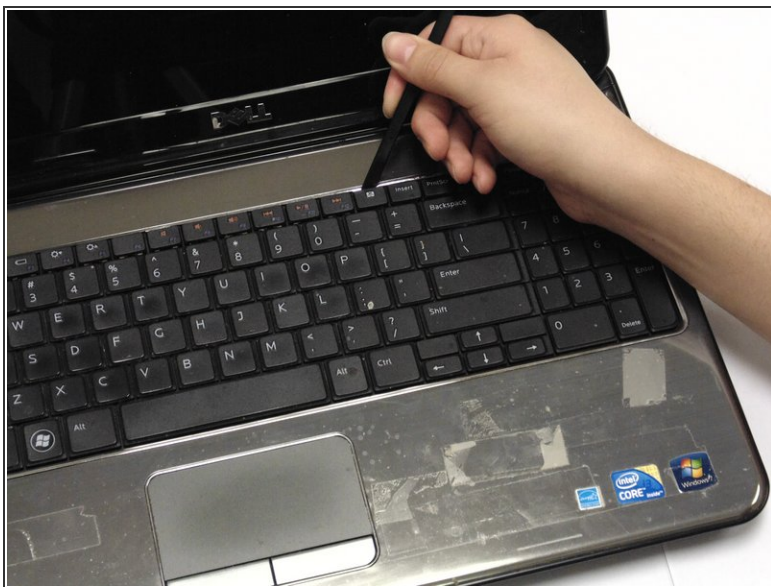
- Using your index finger, push down on the x icon and Home keys.

Step 9



- Locate the keyboard lining (between the black and silver).
- Place your spudger between the keyboard lining behind the F1 and F7 keys and pull up.

Step 10



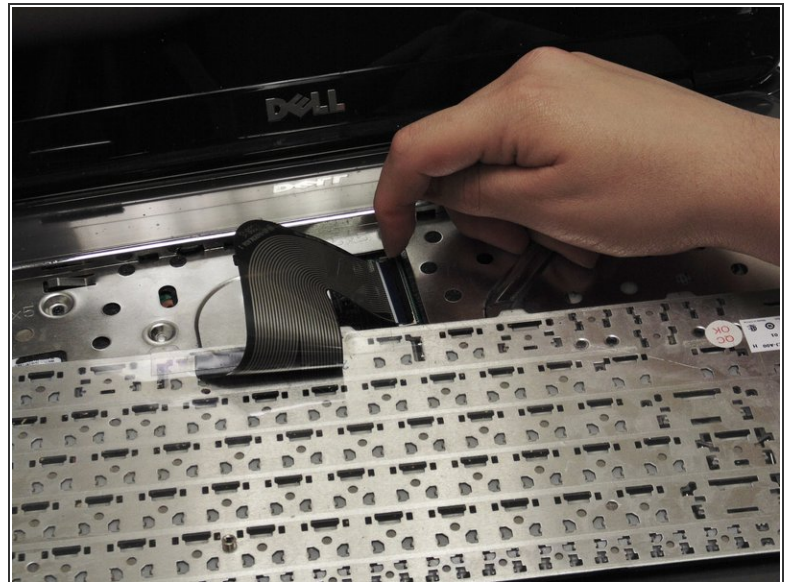
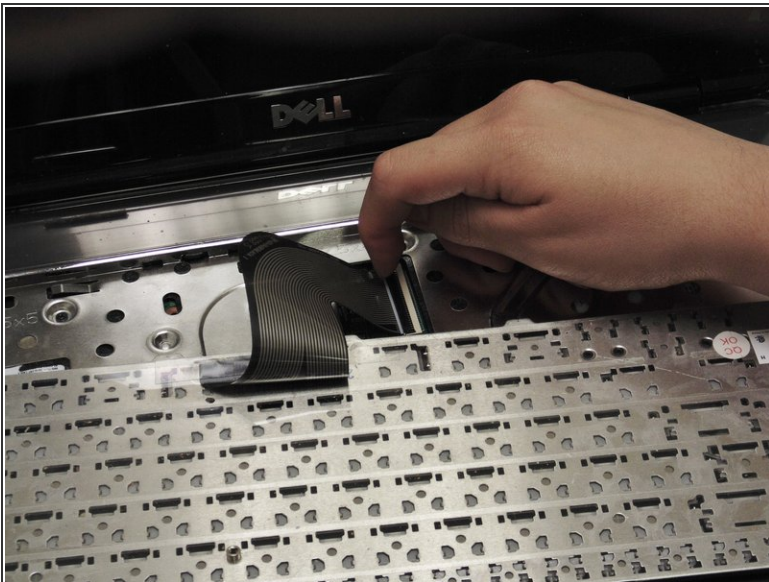
- Place your spudger between the keyboard lining behind the x icon and Home keys and pull up.

Step 11



- Carefully pull and turn the keyboard over.

Step 12



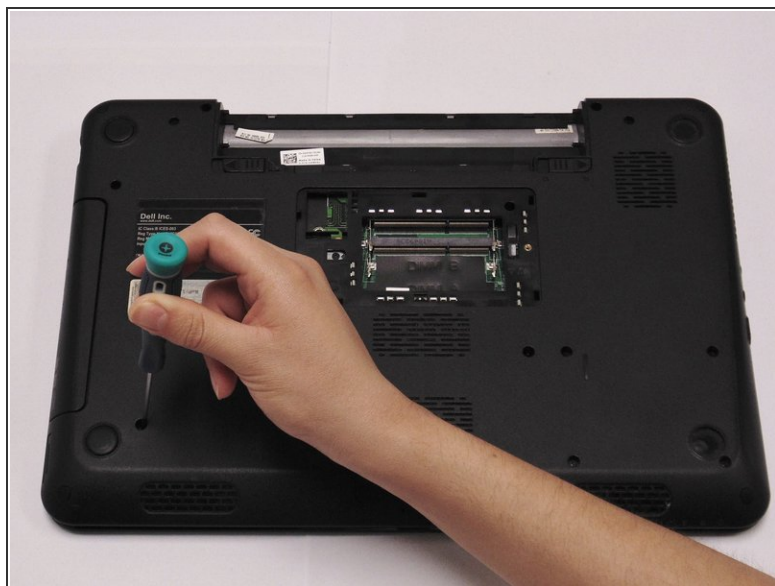
- Lift the black lever.

Step 13



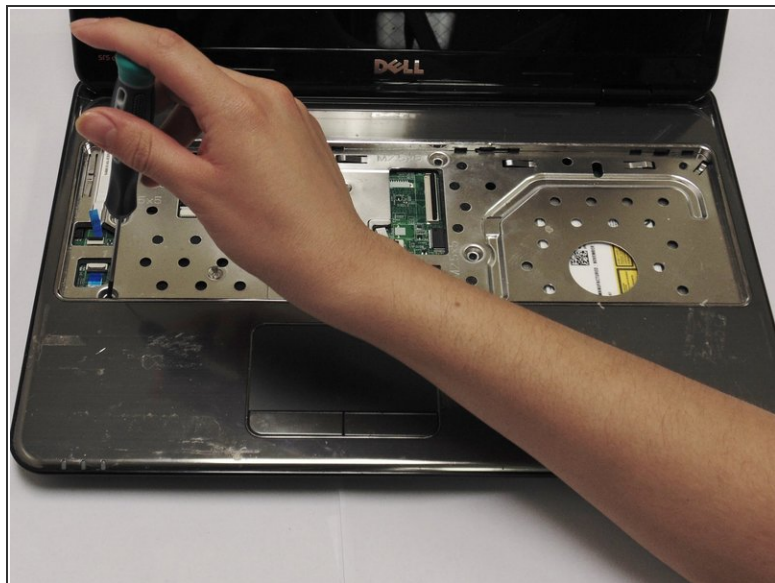
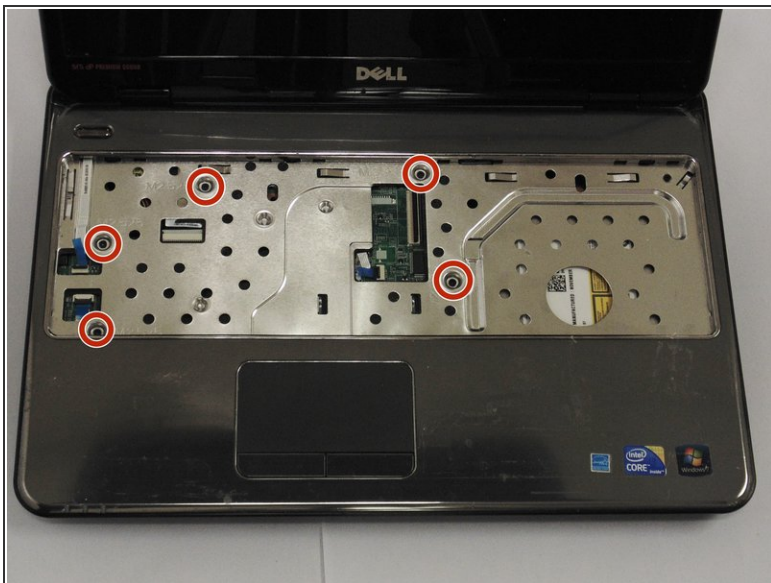
- Remove the keyboard cable

Step 14 — Hard Drive



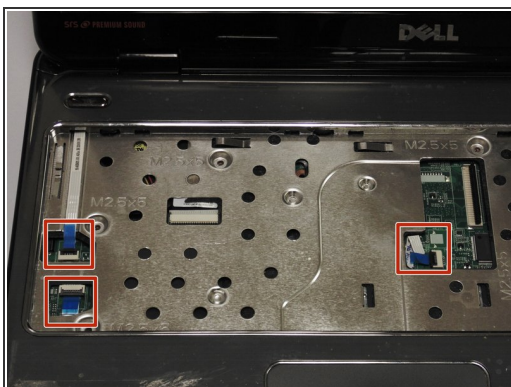
- Turn laptop over and remove the bottom four screw covers outlined in red.
- Then remove the three base screws.

Step 15



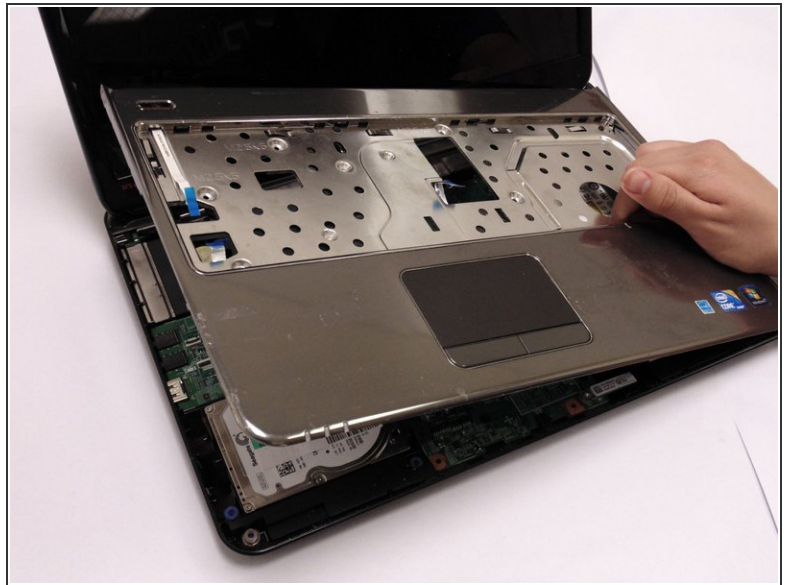
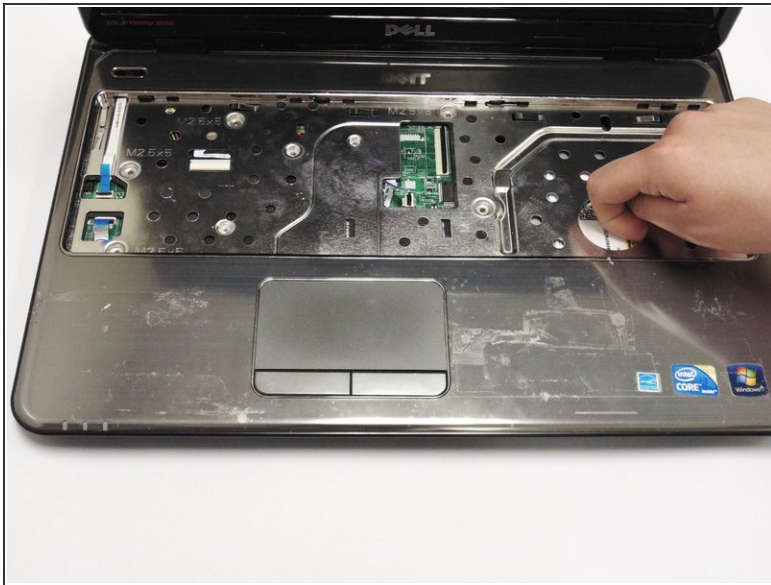
- Turn laptop over and open it. Locate and remove the five palm rest screws.

Step 16



- Locate the palm rest cables. Lift the black levers and unplug the blue cables.

Step 17



- Lift the palm rest until it snaps off.

Step 18



- Close cover and turn laptop over. Locate and remove the four hard drive screws.

Step 19



- Turn laptop over and open it.

Step 20



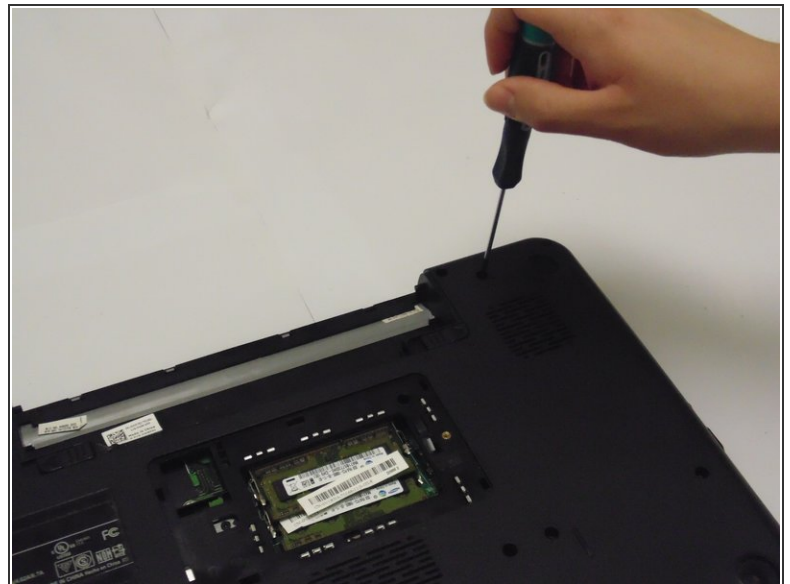
- Lift and remove the hard drive.

Step 21



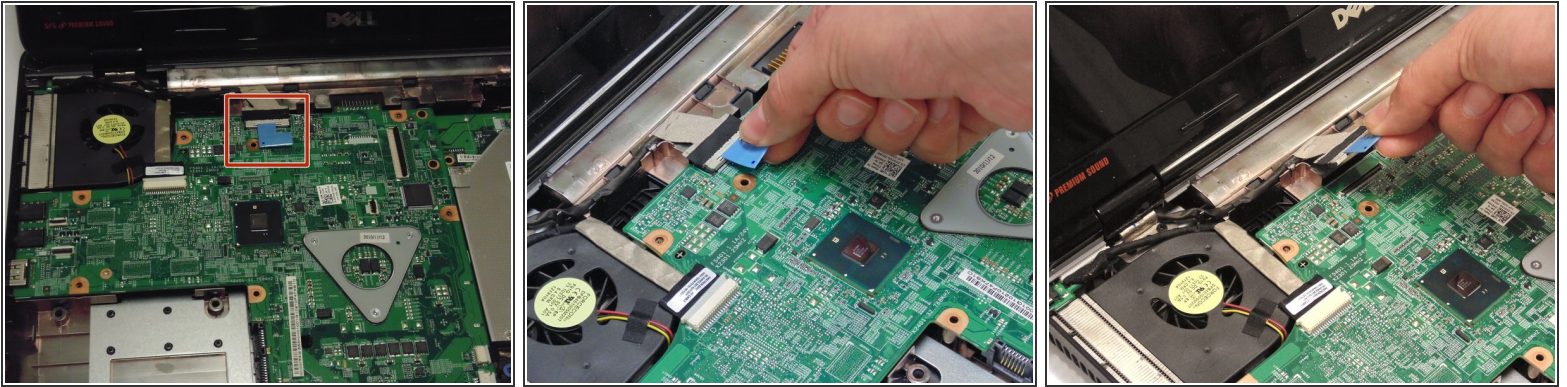
- Remove the hard drive connector.

Step 22 — Screen



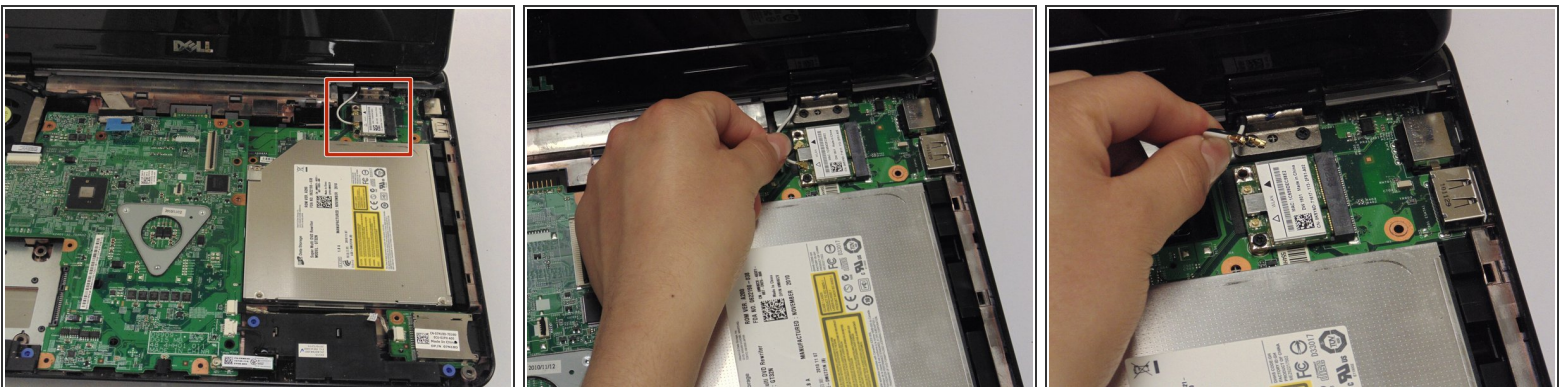
- Locate and remove the bottom hinge screws.

Step 23



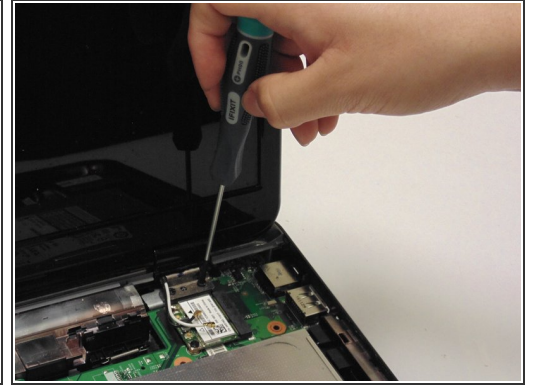
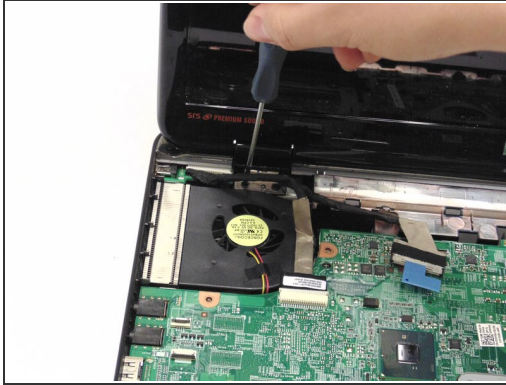
- Turn laptop over and open it. Locate and unplug the LCD Cable.

Step 24



- Unplug the black and white wires on the wireless antenna.

Step 25



- Remove the two hinge screws on both the left and right hand side.

Step 26



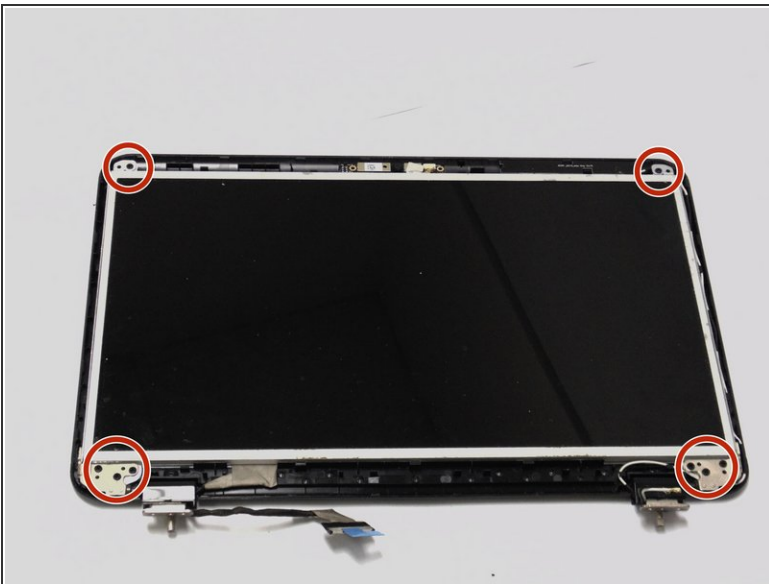
- Remove the screen.

Step 27 — Webcam



- Unsnap and lift the display bezel around the edges and remove it.

Step 28



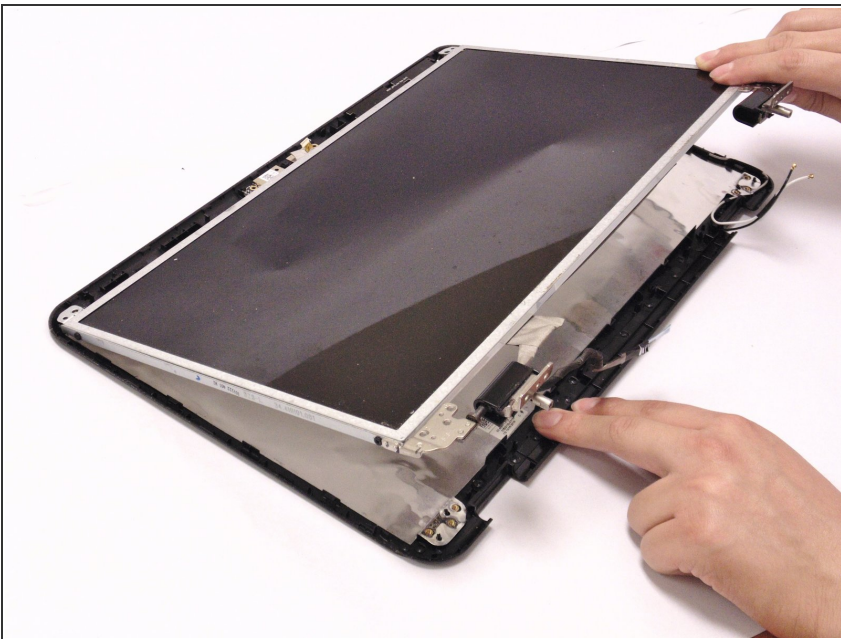
- Locate and remove the eight LCD screws outlined in red.

Step 29



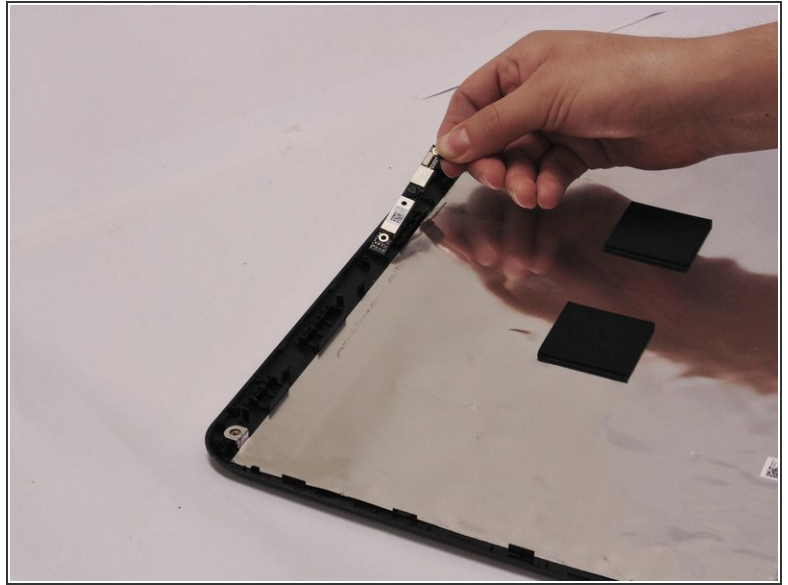
- Carefully unplug the camera cable.

Step 30



- Lift and remove the LCD screen from the backing.

Step 31



- Locate and remove the webcam.

To reassemble your device, follow these instructions in reverse order.